



BRIEF REPORT OPEN ACCESS

Resolving Symbiodiniaceae Diversity Across Coral Microhabitats and Reef Niches

Wyatt C. Million¹ | Christian R. Voolstra^{2,3}  | Gabriela Perna^{2,3} | Giulia Puntin¹ | Katherine Rowe^{2,4} | Maren Ziegler^{1,2} 

¹Department of Animal Ecology and Systematics, Marine Holobiomics Lab, Justus Liebig University Giessen, Giessen, Germany | ²Biological and Environmental Science and Engineering Division (BESE), King Abdullah University of Science and Technology, Thuwal, Saudi Arabia | ³Department of Biology, University of Konstanz, Konstanz, Germany | ⁴School of Science, University of Waikato, Hamilton, New Zealand

Correspondence: Maren Ziegler (maren.ziegler@bio.uni-giessen.de)

Received: 16 September 2024 | **Revised:** 13 January 2025 | **Accepted:** 5 February 2025

Funding: This work was supported by baseline funds to C.R.V. from KAUST and funded by the Deutsche Forschungsgemeinschaft (DFG, German Research Foundation)—project number: 469364832 (M.Z.)—SPP 2299/project number 441832482. The time-series mucus sampling was conducted in the “Ocean2100” global change simulation facility of the Colombian-German Center of Excellence in Marine Sciences (CEMarin) funded by the German Academic Exchange Service.

Keywords: environmental reservoirs | free-living | microhabitat partitioning | surface mucus layer | symbiosis

ABSTRACT

Dinoflagellates of the family Symbiodiniaceae are important symbionts of diverse marine animals and they also occupy different environmental niches on coral reefs. The link between diversity at ecosystem-scale to microhabitats of Symbiodiniaceae within the coral holobiont is largely unknown. Using ITS2-amplicon sequencing, we compared Symbiodiniaceae communities across four environments (seawater, near-reef vs. distant sediments and turf algae) and two coral microhabitats (tissue, mucus) on a coral reef in the Red Sea. We found that coral and environmental habitats were both dominated by the genera *Symbiodinium*, *Cladocopium* and *Durusdinium*, but environmental habitats additionally harboured *Fugacium*, *Gerakladium* and *Halluxium*. Each environmental habitat harboured a distinct Symbiodiniaceae community. Nonetheless, 17 ITS2 sequences were shared among coral and environmental habitats and were also part of nearly half of the ITS2 type profiles in coral-based communities. Tissues and mucus of 49 coral colonies from 17 genera had largely identical Symbiodiniaceae communities. Together with the large difference between environmental Symbiodiniaceae communities and those in the coral tissue and mucus, our results indicate a clear barrier between host-associated and environmental Symbiodiniaceae communities marked by only few shared complete type profiles. Monitoring coral colonies after mucus sampling confirmed its suitability for long-term monitoring of coral-associated Symbiodiniaceae communities.

1 | Introduction

The coral holobiont describes the consortium of eukarya, bacteria, archaea and viruses that interact through a range of symbioses with their animal host, and each other (Rohwer et al. 2001; Thompson et al. 2014). Among the most studied of these relationships is that between the coral and its photosynthetic dinoflagellates of the family Symbiodiniaceae. This symbiosis supports the productivity of the holobiont and

the ecosystems they build in otherwise oligotrophic waters (Muscatine and Porter 1977; Stanley Jr. 2006). In exchange for a protective, high nutrient habitat, the algal symbionts can meet the majority of the coral energy requirements (Yellowlees et al. 2008; Tremblay et al. 2012) while the remaining budget can be met through heterotrophy (Mills et al. 2004; Houlbrèque and Ferrier-Pagès 2009; Hoogenboom et al. 2010). Despite this capacity, prolonged or severe disruption of the exchange between members, such as those caused

This is an open access article under the terms of the [Creative Commons Attribution](https://creativecommons.org/licenses/by/4.0/) License, which permits use, distribution and reproduction in any medium, provided the original work is properly cited.

© 2025 The Author(s). *Environmental Microbiology* published by John Wiley & Sons Ltd.

by light, temperature or nutrient stress can lead to the breakdown of the symbiosis known as coral bleaching (Gleason and Wellington 1993; Jokiel 2004; Morris et al. 2019).

The genetic diversity between genera and species within the Symbiodiniaceae is accompanied by functional variation and trade-offs in symbiosis with scleractinian corals (LaJeunesse et al. 2018; Stat et al. 2008). For example, species within the genus *Cladocopium* may provide more fixed carbon to the host than species within the genus *Durusdinium* (Pettay et al. 2015), while associations with members of *Durusdinium* often result in increased thermal tolerance (Stat et al. 2008; Little et al. 2004; Hoadley et al. 2019; Cunning et al. 2015a). In addition to these patterns at the genus level, species within each genus and variation within these species present additional levels of functional diversity that can contribute to differences in growth or thermal tolerance of the holobiont (Sampayo et al. 2008; Parkinson and Baums 2014; Díaz-Almeyda et al. 2017; Xiao et al. 2022). While coral-Symbiodiniaceae associations tend to be specific, where a coral species is usually associated with a distinct species of Symbiodiniaceae, variation within a host species along environmental gradients has been reported (Bongaerts et al. 2010; Ziegler et al. 2015; Davies et al. 2023). For example, the Caribbean coral *Acropora cervicornis* typically exhibits high fidelity with *Symbiodinium fitti* (Parkinson et al. 2018; Muller et al. 2018), while colonies of *Platygyra verweyi* show variation between *Cladocopium* (type C3) and *Durusdinium* (type D1-4)-dominated communities along a temperature gradient (Keshavmurthy et al. 2012). Coral-associated Symbiodiniaceae communities within a single colony may also shuffle the relative proportions of existing symbiont genera (Cunning et al. 2015b) or strains (Sampayo et al. 2008; Cunning et al. 2015b) or switch by acquiring new symbionts from external reservoirs, such as seawater, sediments, or neighbouring turf algae (Boulotte et al. 2016).

Despite the potential for exchange, the Symbiodiniaceae communities found within the host and environmental habitats differ in their diversity, composition, and function (Cunning et al. 2015c; Parkinson et al. 2015; Fujise et al. 2021; Davies et al. 2023). For example, reef sediment and seawater Symbiodiniaceae taxa are low in abundance in the environment but comprise a large richness and diversity (Cunning et al. 2015c; Pochon et al. 2010). In contrast, Symbiodiniaceae cell densities in coral tissues are much higher, but typically have less diverse communities with usually one dominant and few low abundant taxa (Fujise et al. 2021). Microhabitats within the coral host, such as the surface mucus layer (SML), also provide opportunities for distinct Symbiodiniaceae communities to contribute to changes in the holobiont that are underexplored to date. The coral mucus is a habitat originating from the ectoderm, which protects colonies from sedimentation, fouling, and desiccation (Ducklow and Mitchell 1979; Brown and Bythell 2005). As an environmental interface, the coral mucus also traps and releases free-living and symbiotic microbes thus creating the opportunity for high overlap between microbial communities in the coral SML and environmental habitats (Wild et al. 2004; Naumann et al. 2009; Sweet et al. 2011). Despite the microscale distance between

the coral tissue and SML, differences in physical and chemical properties (Brown and Bythell 2005; Meikle et al. 1988; Wakefield and Kempf 2001; Barott et al. 2015) promote divergent prokaryotic communities in the two microhabitats (Sweet et al. 2011; Apprill et al. 2016; Pollock et al. 2018).

Previous comparisons of the prokaryotes inhabiting the coral mucus and tissue showed distinct taxonomic communities (Sweet et al. 2011; Apprill et al. 2016; Pollock et al. 2018; Davies et al. 2023), which are likely to be accompanied by functional differences among the microhabitats, such as response to disease (Huntley et al. 2022) or environmental sensitivity (Marchioro et al. 2020). However, it is still unknown whether mucus-based Symbiodiniaceae communities mirror those within the coral tissue or if the coral mucus houses distinct symbionts potentially sourced from the environment and/or selectively expelled from the coral tissue (Yamashita et al. 2011). Moreover, identical tissue and mucus communities would suggest that non-destructive assessment of the coral mucus is sufficient as proxy of tissue-bound communities in place of destructive tissue sampling. To elucidate fine scale variation across microhabitats within coral hosts (van Oppen and Raina 2023; Hughes et al. 2022), we compared Symbiodiniaceae communities between the coral tissue and SML.

Here, we used IT2-type profiles predicted by SymPortal (Hume et al. 2019) to compare the Symbiodiniaceae communities of the coral tissue and mucus of coral colonies across 17 genera occurring in the central Red Sea. Simultaneous sampling of tissue and mucus was accompanied by environmental sampling of ambient seawater, of sediment under and 2m away from coral, and of co-occurring turf algae in order to compare coral and environmental Symbiodiniaceae reservoirs. To evaluate the effectiveness of coral mucus sampling as a minimally invasive alternative to destructive tissue sampling, mucus extraction protocols used in the field were replicated on aquarium corals to track potential damage over time. Significant differences between each environmental reservoir, based on ITS2 sequence variation, suggested that distinct communities occupy microhabitats on reefs. Moreover, the number of sequence variants only returned from non-coral sources highlight the large portion of Symbiodiniaceae sequence diversity found outside the holobiont. However, the potential for variation within a Symbiodiniaceae genome precludes the use of ITS2 sequence variants alone to assign this genetic variation to distinct individuals or species present in non-coral habitats where community composition does not meet the assumptions of those in hospite (i.e., the presence of only one taxon per Symbiodiniaceae genus). In contrast, the ITS2 type profiles assigned based on the presence and relative abundance of ITS2 sequence variants within the coral tissue and mucus samples showed that the species-level composition between the two microhabitats are nearly identical suggesting similar communities can be maintained across the drastic physical and chemical clines occurring over small spatial scales. Considering the absence of negative physical consequences in aquarium trials, mucus sampling appears to be an adequate, minimally invasive approach to evaluate coral-associated Symbiodiniaceae diversity.

2 | Methods

2.1 | Sample Collection

Fifty coral colonies were sampled to compare the Symbiodiniaceae communities between coral host tissue and mucus in situ. In August and September 2016, five survey plots were established on the ocean-facing side of Sha'ab reef, a nearshore reef in the central Saudi Arabian Red Sea (22.20355 N, 39.00035 E). Sha'ab reef has a terrace structure, where the shallow reef flat gently slopes to 3–5 m depth to an edge that is overgrown by coral colonies. Below the corals, a large sandy area of approx. Ten metres width extends outward from the edge where the next deeper coral terrace starts. Five plots were established along the first shallow reef edge with a distance of 50 m to each other. At each plot, we sampled 10 coral colonies growing next to each other along the reef edge. This resulted in samples from 17 coral genera distributed randomly among the five plots. To avoid artefacts due to species misidentification, colonies were identified through the photographic record to genus level only.

Coral mucus samples were taken prior to destructive coral tissue sampling by irritating the surface of the colony with the tip of a 10-ml plastic Pasteur pipette for approximately 10 s. This process generated additional mucus that was captured with the pipette. Each pipette containing a sample was bent shut underwater and fixed with a rubber band. Upon return to the boat, all pipettes were opened with the tip facing up and placed on ice for 10 min to let the mucus settle. We then removed the supernatant seawater and a visible mucus sample of approx. 0.5–1 mL was collected from each coral colony into a 2 mL cryovial that was immediately flash-frozen in liquid nitrogen. Host tissue samples were collected on the same spot of each colony as the mucus sample using hammer and chisel. Upon return to the boat, each coral fragment was rinsed with sterile-filtered (<0.22 µm) seawater to remove surface mucus and immediately flash-frozen. One mucus sample was lost during sample preparation, resulting in 49 sets of paired tissue and mucus samples.

In addition to the two coral-associated microhabitats, Symbiodiniaceae communities were sampled from four distinct environmental reservoirs. We collected five replicate 1-L samples of seawater per plot from approximately 1 m above the sampled coral colonies ($n=25$). Seawater samples were immediately stored on ice, upon return to the lab they were filtered (0.22 µm) to retain Symbiodiniaceae, and the filters were frozen for DNA extraction. The sediment directly at the reef edge below the sampled coral colonies (near-reef sediment) and 2 m away from the reef toward open water (distant sediment) was sampled along each plot ($n=4$ per sediment type per plot, $n=20$ per sediment type). For each sample, we gently guided a 50 mL Falcon tube along the sediment surface to fill up the tube with the upper layer of sediment. Sediment samples were flash-frozen on board. Turf algae mats were scraped off dead coral skeletons and reef surfaces with tweezers within 1 m distance from the sampled corals ($n=8$ per plot, $n=40$), transported in zip-lock bags and allowed to drain on board before flash-freezing.

2.2 | Sample Processing and Sequencing

Coral tissue was sprayed off from frozen coral fragments using airflow from a sterile, 1 mL pipette tip connected via a rubber hose to a benchtop air pressure valve with 1 mL of lysis buffer AP1 (Qiagen). Following this, an aliquot of 100 µL of the tissue slurry was added to 300 µL of buffer AP1 in a 1.5 mL tube with 100 µL of glass beads. Samples were then placed in the TissueLyser (Qiagen) for 90 s at 30 Hz and then transferred to a new 1.5 mL tube. Coral mucus samples were defrosted at room temperature, pipetted up and down to mix, and 100 µL of mucus was added to 300 µL of buffer AP1 in a 1.5 mL tube. Although coral tissue samples were the only group bead beaten potentially influencing read representation (Table S1), downstream ITS2 type sequence analyses, that is, SymPortal, are robust to uneven read representation suggesting ITS2 type profile returned here will be largely unaffected by variation in extraction method.

Seawater filters were thawed and cut in thirds and one third was transferred to a 1.5 mL tube with 400 µL of Buffer AP1. Turf algae samples were transferred to 2 mL tubes with 1 mL of lysis buffer AP1. After brief vortexing, samples were mixed on a rotating wheel for 30 min and then 400 µL was transferred to a new 1.5 mL tube. Sediment samples were defrosted at room temperature, vortexed and for each sample 10 mL of sediment was transferred to a 50 mL falcon tube and mixed with 20 mL of lysis buffer AP1. Samples were vortexed briefly and then mixed on a HulaMixer for 30 min. Supernatant (400 µL) was transferred to a new 1.5 mL tube.

All sample types were extracted using Qiagen DNeasy Plant Mini Kit (Qiagen, Germany). RNase A (4 µL) was added, samples were vortexed, and incubated for 10 min at 65°C with tube inversion every 2 min. DNA extractions were then performed according to the manufacturer's instructions, with a final elution volume of 100 µL, apart from mucus and seawater samples, which were eluted in 50 µL. DNA concentrations were measured using a Nanodrop, and all samples were adjusted to 10 ng/µL, apart from the coral mucus (1 ng/µL) and seawater (5 ng/µL).

The ITS2 rDNA region (ITS2) was amplified using the primers SYM_VAR_5.8S2: 5' (TCGTCGGCAGCGTCAGATGTGTA TAAGAGACAG)GAATTGCAGAACTCCGTGAACC 3' and SYM_VAR_REV: 5' (GTCT CGTGGGCTCGGAGATGTGT ATAAGAGACAG)CGGGTTCWCTTGTYTGACTTCATGC 3' (Hume et al. 2018) (Illumina adaptor overhangs underlined). For all samples, triplicate PCRs were performed using 3 µL of DNA, apart from coral samples where 1 µL of DNA was used, and the Qiagen Multiplex PCR kit and a final primer concentration of 0.5 µM in a reaction volume of 10 µL. Thermal cycling conditions were as follows: 95°C for 15 min, followed by 30 cycles (35 cycles for sediment and turf algae samples) of 95°C for 30 s, 56°C for 90 s, 72°C for 30 s and a final extension cycle at 72°C for 10 min. Then, 5 µL of the PCR was run on a 1% agarose gel to confirm successful amplification. Triplicates for each sample were pooled, and samples were cleaned using ExoProStar 1-step (GE Healthcare). Samples were then indexed using the Nextera XT Index Kit v2 (dual indexes and Illumina sequencing adaptors added), cleaned and normalised using the SequalPrep Normalisation Plate Kit (Invitrogen). The ITS2

libraries were pooled (4 μ L per sample) and concentrated using a CentriVap Benchtop Vacuum Concentrator (Labconco). The quality of the library was then assessed using the Agilent High Sensitivity DNA Kit on the Agilent 2100 Bioanalyzer (Agilent Technologies). Quantification was done using Qubit (Qubit dsDNA High Sensitivity Assay Kit; Invitrogen). Sequencing was performed on the Illumina HiSeq2500 platform in the KAUST Bioscience Core Laboratory (BCL).

2.3 | Bioinformatics Analysis

ITS2 sequencing data from environmental samples (seawater, turf algae, sediment) were analysed in SymPortal (Hume et al. 2019) separately from coral samples (tissue and mucus). Due to the potential high within-genus diversity of Symbiodiniaceae in environmental samples, the assumptions for the full SymPortal analysis could not be met and environmental samples were therefore analysed as post-MED sequences. Coral samples were analysed with the full SymPortal workflow which produced post-MED sequences as an intermediate step as well as ITS2 type profiles as the final output. Post-MED ITS2 sequence count tables were used for direct comparisons of environmental samples and coral samples, while the ITS2 type profile count tables were used to compare coral tissue and mucus samples. Three turf algae samples with less than 15,000 reads were removed prior to analysis. Additionally, retained low abundance ITS2 sequences (<0.01%) across all samples were removed with the `purgeOutliers` function from the *MCMC.OTU* package in R (Matz 2016). The 0.01% threshold represents a conservative cut-off for retaining rare variants, relative to the standard of 0.1% (Quigley et al. 2014), that will preserve ITS2 sequences indicative of potential free-living Symbiodiniaceae at especially low abundances in the environment.

Differences in Symbiodiniaceae community composition in coral and environmental samples were visualised with a Principal Coordinates Analysis based on Bray–Curtis dissimilarity with the *phyloseq* package (McMurdie and Holmes 2013). The dispersion (i.e., beta diversity) of each Symbiodiniaceae reservoir was compared with an analysis of variance (ANOVA) and post-hoc Permutation test of multivariate homogeneity of group dispersions in the *vegan* package (Oksanen et al. 2022). Differences in the composition between the six reservoirs and sampling plots were assessed with a fully-crossed two-factorial Permutational Multivariate Analysis of Variance (PERMANOVA) in *vegan* (Oksanen et al. 2022). Separate PERMANOVAs on coral and environmental datasets were also conducted to specifically test for differences between coral mucus and tissue communities and between the environmental reservoirs. Patterns of shared and exclusive ITS2 sequences across the six sources were explored with plots from the *UpSet* package (Gehlenborg 2017). We used the SymPortal ITS2 type profile predictions as proxies for Symbiodiniaceae species and further evaluated potential differences between coral tissue and mucus reservoirs with this increased taxonomic resolution. All analyses and visualisation were completed in the R 4.1.2 environment (R Core Team 2020).

2.4 | Assessment of Tissue Integrity Following Mucus Sampling

To identify potential effects of mucus sampling on long-term coral tissue integrity, we simulated the sampling procedure on 2–3 genetically distinct individuals of the coral species *Galaxea fascicularis*, *Acropora muricata*, *Porites rus*, *Stylophora pistillata* and *Pocillopora verrucosa* originating from the Red Sea and Indo-Pacific and compared their recovery to untouched clones. At the Ocean2100 coral aquarium facility (Schubert and Wilke 2018) at Justus Liebig University Giessen, Germany corals were sampled following the in situ procedure, that is, irritating ~2cm² of the colony surface with the tip of a plastic Pasteur pipette for 10s. We then tracked 15 disturbed and 15 undisturbed clonal pairs photographically before, immediately after, and 1, 3, 5, 7 and 14 days post-sampling. These were visually inspected and photographically documented to monitor the integrity of the tissue in the sampled area (e.g., appearance of lesions). Pictures were taken with the ONEPLUS A3003 camera (Sony IMX 298 Sensor, 16 MP, 1.12 μ m, PDAF, OIS, f/2.0) in the same aquarium where corals were reared and sampled. Camera positions and settings were optimised for each subject and once established remained constant across days.

3 | Results

3.1 | ITS2 Sequencing and SymPortal Data Analysis

ITS2 sequencing with Illumina HiSeq resulted in an average of 220,017 reads per sample after removing three samples with less than 15,000 reads (average read number per sample per sample type shown in Table S1). Post-MED output from SymPortal contained 1261 unique ITS2 sequences across environmental samples (seawater, turf algae, near-reef sediment and distant sediment) and 744 unique sequences from coral samples (tissue and mucus). After removing low abundant ITS2 sequences (<0.01%, corresponding to 1240 reads), 411 and 208 unique ITS2 sequences remained in environmental and coral samples, respectively. Together, 534 unique ITS2 sequences were identified from all samples with 195 (36.5%) belonging to the genus *Symbiodinium*, 254 (47.6%) to *Cladocopium*, 73 (13.7%) to *Durusdinium*, 1 (0.1%) to *Fugacium*, 10 (1.9%) to *Gerakladium*, and 1 (0.1%) to *Hallaxium*.

3.2 | Symbiodiniaceae Diversity Differs Among Environmental Reservoirs

SymPortal identified 411 unique ITS2 sequences in the four types of environmental samples belonging to six Symbiodiniaceae genera. Based on ITS2 sequence diversity, Symbiodiniaceae community composition of these environmental reservoirs was significantly different (PERMANOVA, $R^2=0.154$, $F=6.76$, $p=0.001$, Table S2), which was confirmed with the principal component analysis (Figure 1). Communities of both near-reef and distant sediment samples had the largest similarity, but were distinct from each other ($F=2.723$, $p=0.003$), and significantly different from those in turf algae ($F=8.11$, $p=0.001$;

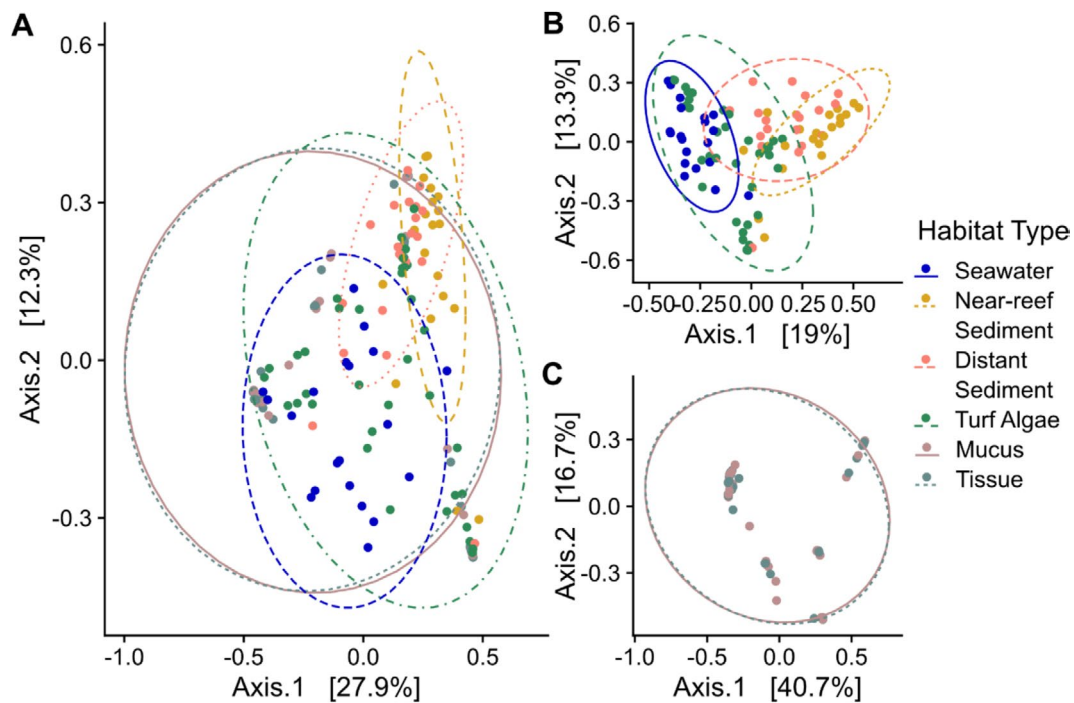


FIGURE 1 | Symbiodiniaceae community composition in environmental reservoirs on a coral reef in the Red Sea based on Principal Coordinates Analysis of Bray-Curtis distances of ITS2 sequences for (A) all samples, (B) samples originating from only environmental sources (i.e., seawater, near-reef sediment, distant sediment and turf algae) and (C) samples collected from only coral sources (i.e., coral tissue and coral mucus). Coral samples belonged to 17 genera: *Acropora*, *Stylophora*, *Xenia*, *Platygyra*, *Galaxea*, *Porites*, *Echinopora*, *Pocillopora*, *Goniastrea*, *Favia*, *Millepora*, *Pavona*, *Ctenactis*, *Fungia* and five samples belonging to three distinct genera unable to be identified with sufficient certainty.

$F=4.78$, $p=0.001$, respectively) and seawater ($F=18.26$, $p=0.001$; $F=9.18$, $p=0.001$, respectively), which were also significantly different from each other ($F=4.69$, $p=0.001$, Table S3). Additionally, there was no effect of plot or interaction of sample source and plot on community composition ($p=0.38$; $p=0.98$, respectively). Overall dissimilarity (i.e., beta diversity) in Symbiodiniaceae composition among samples of a given habitat was significantly lower in seawater (0.366) relative to near-reef sediment (0.468), distant sediment (0.541), turf algae (0.601), coral mucus (0.527) and coral tissue (0.528), which were all statistically similar except for near-reef sediment samples, which had significantly lower dissimilarity than turf algae (Tables S4 and S5).

The seawater samples were largely dominated (relative abundance >0.5) by *Cladocopium* spp., though the majority of samples additionally had *Symbiodinium* spp. present at relative abundances of 10% to 65% (Figures 2A and S2). Near-reef sediment samples were almost exclusively dominated by *Symbiodinium* spp. with *Cladocopium* spp. dominating one sample and co-dominating another (Figures 2C and S2). Symbiodiniaceae communities in distant sediment and turf algae samples showed a larger range of genus-level distribution, occasionally dominated by a single genus, but with most samples displaying more balanced composition relative to near-reef sediment (Figure 2B,C). The highest relative abundances of *Durusdinium* spp. were also found in turf algae and near-reef sediment. Though rarely at high abundance, sequences of *Fugacium* were only seen in sediment habitats, while *Gerakladium* and *Hallaxium* sequences were found in seawater and both sediment types.

At the individual sequence level, seawater samples had the highest sequence richness overall (229) and average number of distinct sequences per sample (42.95; Figure S3, Table S6), followed by turf algae (207; 16 per sample), distant sediment (169; 21.2 per sample) and near-reef sediment (140; 21.05 per sample). Only 16 turf algae, 10 near-reef sediment, and 2 distant sediment samples had any sequences occupying greater than 50% relative abundance and only 12 sequences occupied these dominant roles (Figure S4). Nearly half of the sequences within a habitat type occurred in a single sample only (41%–51% of sequences; Figure S5) and it was rare for sequences to occur in more than five samples. More broadly, the four environmental reservoirs were characterised by large proportions of exclusive sequences only found in a single reservoir (Figure 3). Specifically, 27.5% of turf algae, 24.4% of seawater, 13.6% of near-reef sediment and 26% of distant sediment sequences were exclusive to their respective reservoirs. Figure 1 suggests seawater and turf algae samples are similar while the two sediment habitats have high overlap. Among the sequences identified in seawater and turf algae, 38% were shared between the two habitats while 32.6% of sequences were shared between near-reef and distant sediment habitats. Only 1 sequence was exclusively shared between all environmental reservoirs, but not corals and 17 were shared between all environmental reservoirs and the coral samples (Table S7).

In agreement with the community ordination, coral samples shared more sequences with turf algae and seawater exclusively, than with sediments (19 vs. 5). Considering that collections of sequences, as opposed to single sequences, represent Symbiodiniaceae individuals due to the potential for

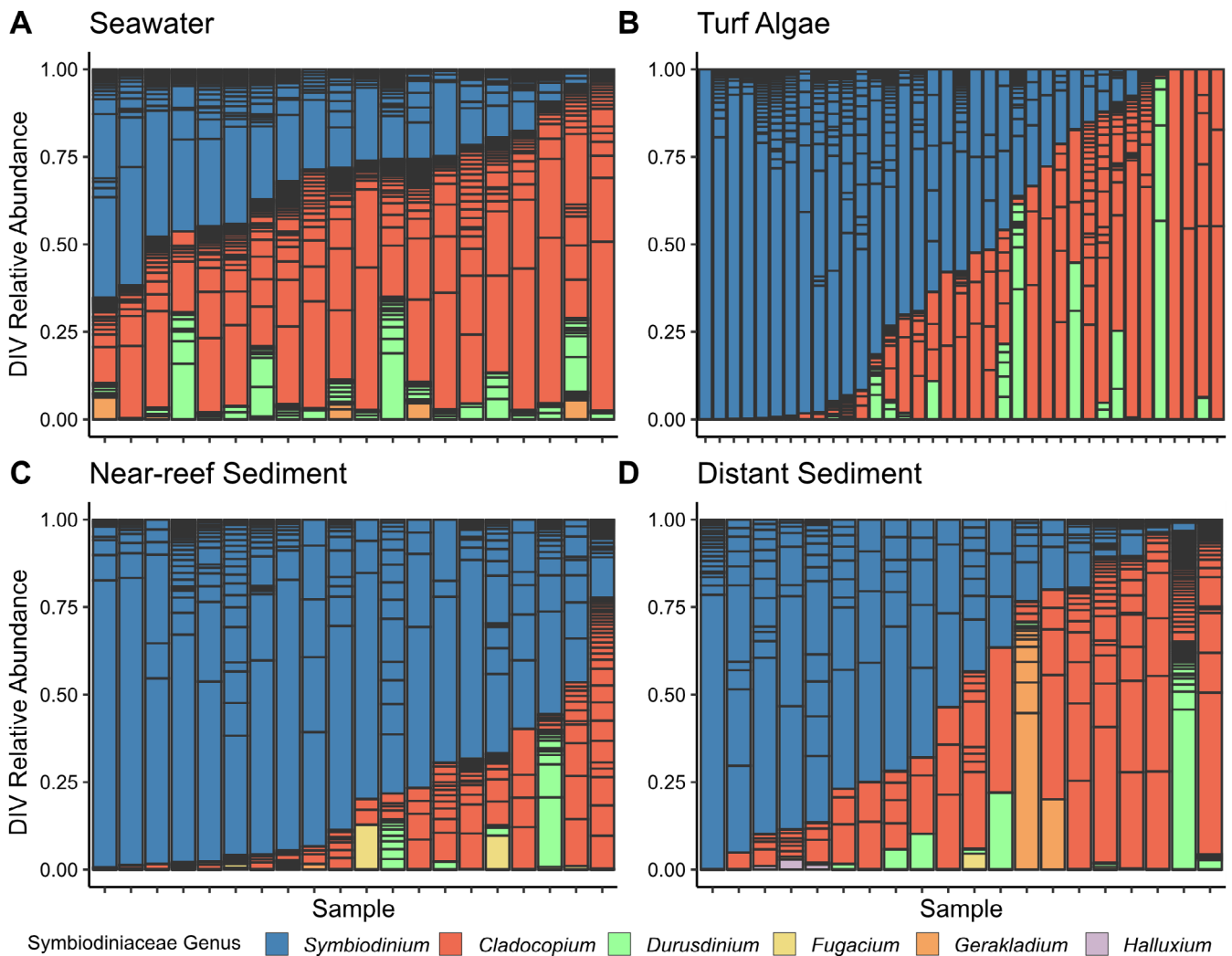


FIGURE 2 | Relative abundance of unique ITS2 sequences in samples from seawater (A), turf algae (B), near-reef sediment (C) and distant sediment (D) environmental sources on a coral reef in the Red Sea. Individual sequences are coloured by genus and separated by horizontal bars within each sample. Importantly, individual sequences may represent intergenomic or intragenomic variation and their contribution to ITS2 type profiles is not determined in this analysis. See Figure S4 for a more detailed version coloured by individual sequences.

intragenomic diversity, we searched for complete sets of sequences in free living samples that correspond to the set of Defining Intragenomic Variants (DIVs) that compose the ITS2 type profiles from coral sources. Of the 41 ITS2 type profiles found in corals, 21 complete DIV sets were present in environmental samples with 20 sets present in seawater, 14 in turf algae, 10 in near-reef sediment and 7 in distant sediment (Figure S7).

3.3 | Coral Tissue and Mucus Harbour Nearly Identical Symbiodiniaceae Communities

Overall Symbiodiniaceae community compositions of coral tissue and mucus samples were indistinguishable from each other when analysed together with environmental reservoirs ($p=1$) and when tested alone ($p=0.99$). Similarly, only 19 of 208 sequences found in coral tissue and mucus were not shared between these compartments, and these were all low abundant sequences occurring at $<2\%$ relative abundance in any given sample apart from one sequence (X1778942_C)

occurring in a mucus sample at 3.7%. Nearly half of the sequences were shared between the tissue and mucus exclusively (Figures 3 and S6).

To further explore the similarity between coral tissue and mucus compartments and to help resolve intragenomic variation within the Symbiodiniaceae ITS2 region, we utilised the IT2 type profiles from SymPortal as proxies for genotypes. Based on the 98 coral samples, SymPortal predicted 41 unique ITS2 type profiles belonging to *Symbiodinium* (16 distinct profiles), *Cladocopium* (17) and *Durusdinium* (8), of which 26 occurred as dominant type profiles (representing $>50\%$ relative abundance within a sample). Of these ITS2 type profiles, 19 occurred in both the coral tissue and mucus, 15 in the tissue alone and 7 in the mucus alone. Interestingly, these 26 dominant type profiles tended to be exclusive to a single coral genus if belonging to *Symbiodinium* or *Durusdinium* while *Cladocopium* type profiles were often dominant across genera apart from four type profiles consisting of C15-related DIVs that were exclusive to *Porites* (Figure S8). When comparing the Symbiodiniaceae community between corresponding

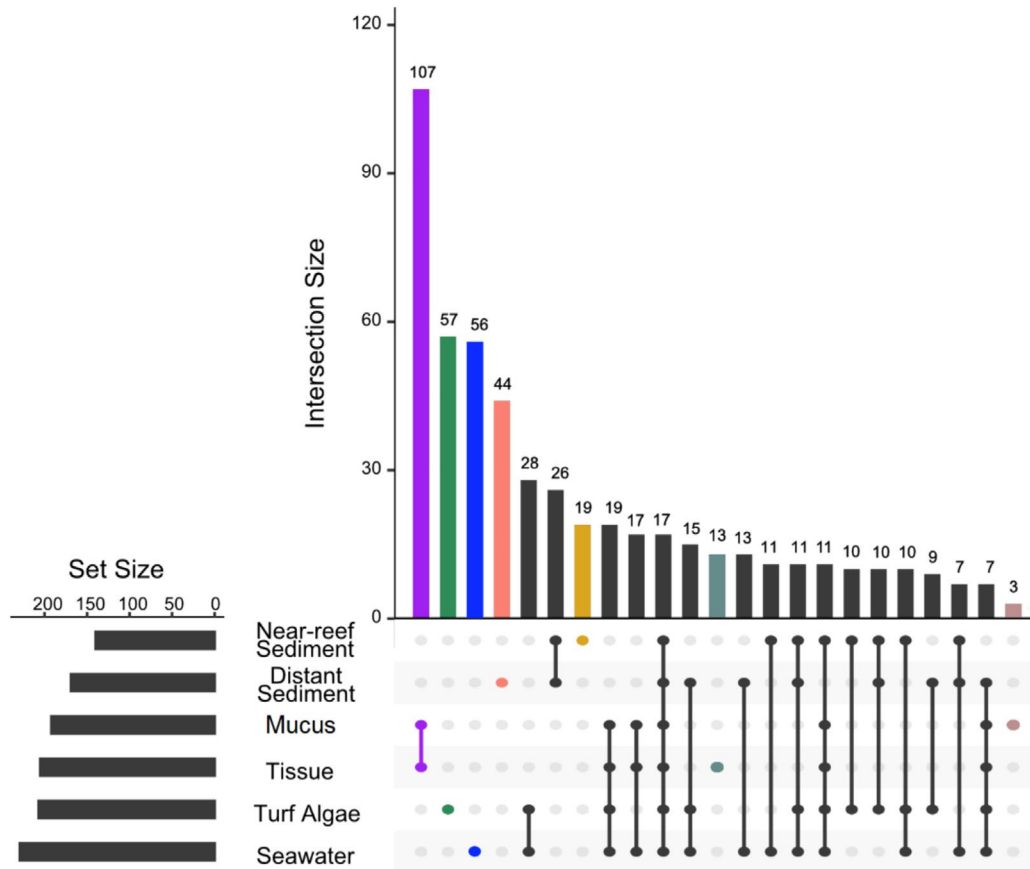


FIGURE 3 | Distribution of shared ITS2 sequences between combinations of coral (tissue and mucus) and environmental (near-reef sediment, distant sediment, turf algae and seawater) sources. The number of sequences shared between a given set of sources (distinguished by filled points) is displayed by the vertical barplot. Total number of unique sequences for each source is shown in the horizontal bar plot. Only combinations with more than three shared sequences are shown here (all combinations included in Figure S6).

tissue and mucus samples per colony, 47 of 49 pairings had identical dominant sequences (i.e., most abundant DIVs within ITS2 type profile), with 33 of the 49 pairings having identical dominant ITS2-type profiles and in two cases, the profile of background types also matched across the compartments (Figure 4). In 16 pairings, ITS2-type profiles were not identical, however, the most abundant sequence was the same in 14 pairings (Table S8). Of the two non-matching pairs, one set of samples from *Ctenactis* spp. differed in composition of *Cladocopium* sequences and the tissue of a *Pavona* spp. returned a *Durusdinium* ITS2 type profile while its corresponding mucus appeared to be dominated by a *Cladocopium* ITS2 type profile (Figure 4B). As expected, the 16 non-identical pairings showed a similar distribution of ITS2 sequences despite receiving differing ITS2 profile designations from SymPortal (Figure 4B).

3.4 | Mucus Sampling Is Non-Invasive

In total, 15 coral colonies were sampled and tracked for 14 days post-sampling together with 15 non-treated controls. The only physical effect of the mucus sampling procedure was seen immediately after a colony was sampled and consisted of retreated polyps over a roughly 2cm² area of coral tissue (Figure S9). This was more pronounced for species with larger polyps (i.e., *Galaxea fascicularis*). From 1 day after mucus sampling, none

of the colonies showed signs of disturbance or damage, mirroring their untreated clonemates and the pre-sampled condition (Figure S9).

4 | Discussion

Considering the potential of free-living Symbiodiniaceae communities as reservoirs that offer additional genetic and functional diversity besides that retained in endosymbiotic communities (Cunning et al. 2015c; Fujise et al. 2021; Pochon et al. 2010; Nitschke et al. 2022; Davies et al. 2023), their further documentation will contribute to the growing understanding of the diversity of Symbiodiniaceae. In particular, investigations pairing free-living and in hospite communities have the potential to shed light on the exchange between reservoirs. To this end, we explored differences in the Symbiodiniaceae communities of four environmental and two coral-based habitats to identify overlap/segregation that may support potential exchange or isolation of Symbiodiniaceae on natural reefs. We found differences between free-living communities that align with previous reports of Symbiodiniaceae in seawater, sediment and turf algae niches. Within a coral, however, the nearly identical communities across the tissue and mucus compartments suggest that accurate Symbiodiniaceae genotype identification (i.e., ITS2 type profiles) can be made from minimally invasive mucus sampling.

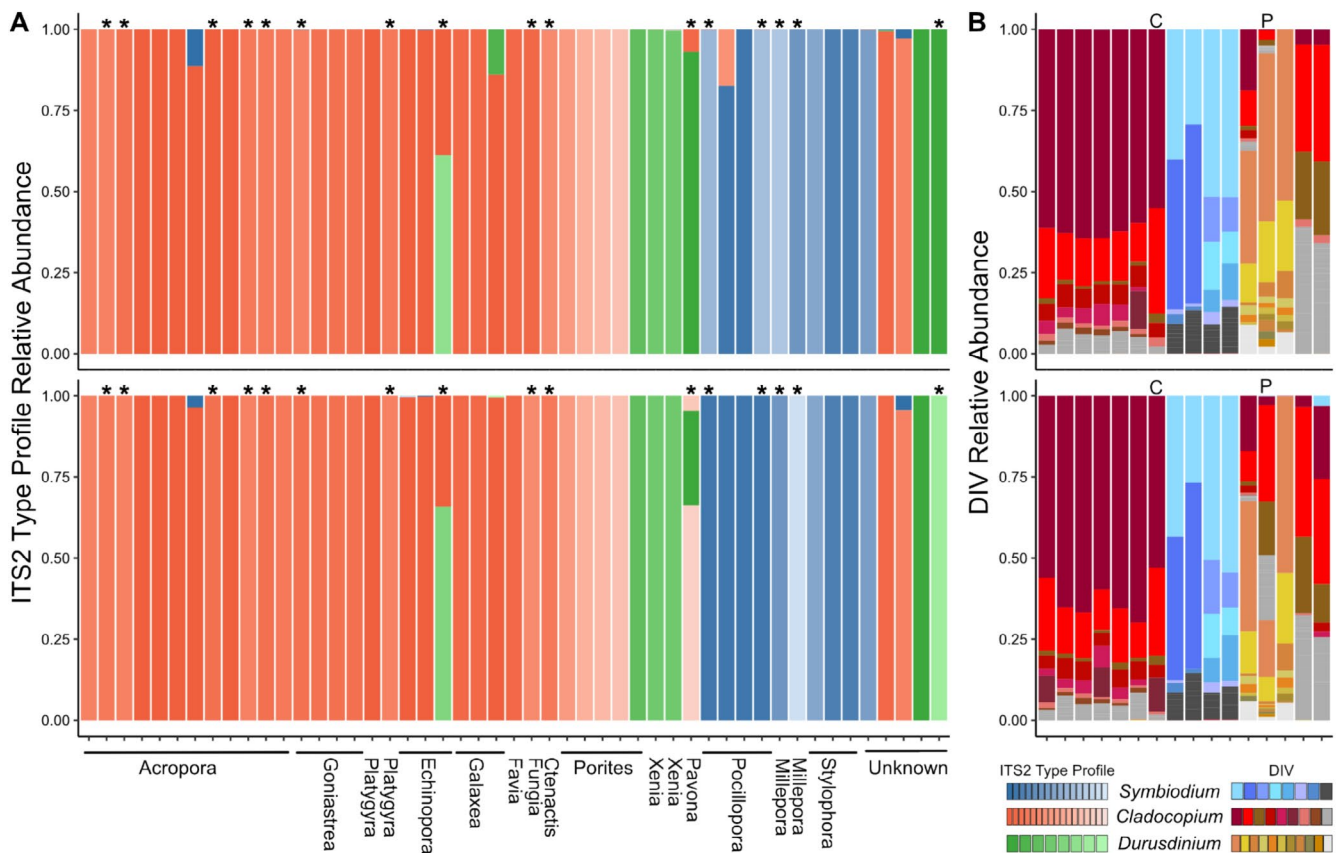


FIGURE 4 | Relative abundance of ITS2 type profiles (A) in coral tissue (top) and mucus (bottom). Tissue-mucus pairings with non-matching ITS2-type profiles are labelled with an asterisk (*). For these non-matching pairings, the relative abundance of the DIVs within each sample are shown in panel (B). Samples in panel (B) are grouped by DIV community similarity rather than host genus as in panel (A). Here, the *Cnetactis* and *Pavona* samples, which showed the largest differences in ITS2 DIV relative abundance between tissue and mucus are labelled with a C and P according to genus, respectively.

4.1 | Distinct Free-Living Symbiodiniaceae in Natural Reef Reservoirs

Symbiodiniaceae have been found to occupy numerous niches on coral reefs outside of their symbiosis within the coral holobiont (Cunning et al. 2015c; Fujise et al. 2021; Pochon et al. 2010; Venera-Ponton et al. 2010; Sweet 2014) and the genetic and symbiotic potential of these communities is of particular focus given the opportunity for horizontal transmission of symbionts during juvenile and adults stages (Boulotte et al. 2016; Nitschke et al. 2016; Davies et al. 2023). Here, we found distinct Symbiodiniaceae community assemblages among seawater, turf algae, near-reef sediment, and distant sediment microhabitats that align with previous reports of the propensity for free-living Symbiodiniaceae communities to remain spatially heterogeneous (Cunning et al. 2015c; Fujise et al. 2021; Pochon et al. 2010; Venera-Ponton et al. 2010; Sweet 2014). Seawater and turf algae samples tended to be more similar with large portions of *Symbiodinium* and *Cladocopium* and low abundances of *Fugacium*, *Gerakladinium*, and *Hallaxium* sequences when compared to sediment sources, which had the highest proportions of these genera, similar to previous reports (Cunning et al. 2015c; Fujise et al. 2021; Ziegler et al. 2018). Interestingly, the near-reef and distant sediment habitat types also displayed distinct communities despite being only two meters from each other. The near-reef

sediment samples, taken from directly under the adjacent corals, were almost completely dominated by *Symbiodinium* while distant sediments, sampled in an open patch two meters away from corals, were more variable across samples (Figure 2). Yet, Symbiodiniaceae communities in both types of sediment samples were equally distinct from those associated with corals, illustrating that Symbiodiniaceae originating from the coral colonies are likely not preferentially settling in sediments in their direct vicinity. Rather, the coral-derived organic matter and metabolites may create a niche in the near-reef sediment supporting a distinct Symbiodiniaceae community (Kelly et al. 2022). Despite these overall differences across small spatial scales, there was no effect of sampling location (i.e., plot) and the type of environmental niche thus strongly structured the Symbiodiniaceae communities. Dissimilarity among samples was similar across environment types except for seawater, whose samples had significantly higher homogeneity. This is perhaps expected considering the physical properties of the water column, a habitat type, which was also found to support spatial homogeneity of prokaryotic communities (Apprill et al. 2016).

In line with the metacommunity characterisation of Symbiodiniaceae dynamics on coral reefs, which suggests distinct habitats are linked through exchange between them (Cunning et al. 2015c; Mihaljevic 2012), a number of ITS2

sequences were shared between environmental types in the current study. Specifically, the turf algae samples, which had the most unique sequences, still shared nearly 75% of ITS2 sequences with at least one other environment type. Eighteen sequences were present in all environmental habitats, which stands in comparison to the lack of universal ASVs reported by Fujise et al. (2021) across sediment, seawater and coral. The presence of individual sequences across environment types, however, does not mean an equal number Symbiodiniaceae taxa or cells are being exchanged. Here, environmental habitats could only be analysed to the level of sequences, which may be present in, but cannot be analysed as, DIV-based ITS2 type-profiles that SymPortal uses to define taxa. Therefore, the presence of a distinct sequence in two environmental samples may arise through (1) the presence of the same taxon in both samples or (2) two different taxa with the same ITS2 copy within their genomes (Hume et al. 2019; Davies et al. 2023). So, while half of the ITS2 type profiles were recovered in at least one free-living sample as complete sets of sequence variants (Figure S7), the inability to resolve inter vs. intragenomic variation in environmental samples limited the ability to determine the amount of exchange of Symbiodiniaceae individuals between the habitats explored here.

Conversely, the absence of a particular ITS2 sequence variant from an environmental or coral habitat is a useful proxy for identifying exclusive genomic diversity. For instance, over 300 sequences are only found in the four environmental habitats and while these sequences likely do not represent 300 Symbiodiniaceae genotypes, they do offer genetic diversity that is potentially novel from the coral holobiont. Characterising these free-living communities is therefore important when considering uptake from environmental reservoirs during bleaching recovery, which may offer the opportunity to acquire new, potentially advantageous symbionts (Buddemeier and Fautin 1993; Coffroth et al. 2006). Similarly, seeding of juvenile corals by the sediment-aided horizontal transmission of symbionts offer yet another mechanism utilising the diversity found within reef habitats (Nitschke et al. 2016; Ali et al. 2019).

4.2 | Coral Tissue and Mucus Have Mirroring Symbiodiniaceae Communities

While there have been more frequent empirical comparisons among in hospite and various free-living Symbiodiniaceae communities (Cunning et al. 2015c; Fujise et al. 2021; Pochon et al. 2010), comparisons between the tissue and mucus within the coral holobiont have largely been limited to the prokaryotic communities (Sweet et al. 2011; Apprill et al. 2016; Pollock et al. 2018; D Ainsworth et al. 2015). These studies uncovered that distinct prokaryotic communities persist between coral skeleton, tissue and mucus (Sweet et al. 2011; Apprill et al. 2016), which is in line with the dramatically different environmental conditions across these microhabitats. Similarly for Symbiodiniaceae, the highly regulated symbiosome (Wakefield and Kempf 2001; Barott et al. 2015) creates a stable environment for intracellular Symbiodiniaceae, while the abiotic conditions of the coral mucus are temporally and environmentally variable and directly interact with seawater (Bythell and Wild 2011). Despite these potential barriers, we found indistinguishable

communities, high sequence overlap, and preservation of ITS2 type profiles between the coral tissue and mucus that suggest abundant and unhindered exchange between the two microhabitats within the holobiont and a clear delimitation of the mucus from the surrounding seawater.

Characterisation of the Symbiodiniaceae in coral mucus is limited and as a result, the origins, residence time and ultimate fate of this community are still unclear. Given the rapid turnover rate of the coral mucus (Wild et al. 2004), the relatively stable intracellular Symbiodiniaceae communities likely act as a source that repopulates the coral mucus through expulsion of symbionts. Symbionts expelled regularly and while under stress (Hoegh-Guldberg et al. 1987; Stimson and Kinzie 1991) likely interact with the coral mucus upon leaving the polyp providing an opportunity to occupy the new niche. While coral often expel degraded Symbiodiniaceae cells, release of healthy individuals (Ralph et al. 2001; Bhagooli and Hidaka 2004) increases the potential for the formation of an active SML population though the residence time of these Symbiodiniaceae communities remains unclear. Notably, the large overlap in communities between coral tissue and mucus persisted across 17 coral genera suggesting these niche interactions are relatively conserved in tropical corals. Variance among microhabitat-specific prokaryotic communities has been documented to change with environments (Gajigan et al. 2017) and considering the potential for selective expulsion (Yamashita et al. 2011) and variation in Symbiodiniaceae physiology (LaJeunesse et al. 2018; Stat et al. 2008), exchange of symbionts between the coral tissue and mucus may also vary over time. Given that 90% of the sequences found in the tissue were also present in the mucus (Figure 3), there appears to be a limited degree of selection during exchange between compartments during the time of sampling. Similarly, the maintenance of ITS2 type profiles between coral tissue and mucus samples confirms the relative abundance of the shared sequences is also preserved across the microhabitat partitions. The coral used here were from an observably healthy reef, lacking disease and bleaching, and therefore offer a baseline condition for additional microbial scale spatial analyses of the coral holobiont (van Oppen and Raina 2023). While a large taxonomic range of Red Sea corals was investigated here, whether tissue and mucus Symbiodiniaceae communities remain homogenous under stress conditions should be addressed with future studies.

The use of the ITS2 type profiles predicted by SymPortal offers enhanced biological resolution when characterising intergenomic and intragenomic variation within Symbiodiniaceae communities of the coral tissue and mucus. However, of the 49 tissue-mucus sample pairings, 16 returned nonmatching ITS2 type profiles despite the majority of DIVs being present in both microhabitats of 48 pairings (Figure 4B). Only a single pairing from a *Pavona* colony returned ITS2 type profiles from different genera (*Cladocopium* in tissue, *Durusdinium* in mucus). The remaining mismatched pairings showed less divergence and differed in (1) whether the most abundant DIV in one sample was the most abundant or in co-majority with the second most abundant DIV in the other sample and/or (2) differences in the presence/absence of background (less abundant) DIVs. Given a coral is often dominated by only a single Symbiodiniaceae taxon (Hume et al. 2019, 2020; Thornhill et al. 2007; Pettay et al. 2011; Davies et al. 2023), it may be unlikely that two highly related

but distinct ITS2 type profiles dominate the tissue and mucus. Therefore, if the coral mucus community is derived from the coral tissue, for example, via discharge from the tissue, the mismatches seen in 15 of 16 pairings likely do not represent true intraspecific variation of Symbiodiniaceae between the compartments.

Beyond providing insights into the fine-scale spatial distribution of Symbiodiniaceae, the similarities seen here highlight the ability of minimally invasive mucus sampling to replace destructive sampling of coral symbionts. About two-thirds of the ITS2 type profiles corresponded between coral tissue and mucus and 98% of mucus samples (i.e., all but one) returned the same majority DIV of the tissue and had near-identical type profiles. Depending on the research question and the biological resolution needed, mucus sampling may thus present an alternative and easy sampling method. Currently, the standard procedures for assessing Symbiodiniaceae communities include sacrificing coral tissue to extract symbiont DNA (Cunning et al. 2015c; Camp et al. 2020; Ziegler et al. 2017; Elder et al. 2023; Hume et al. 2013), which may be unavoidable when conducting other phenotypic measures but inhibits repeat sampling when biological material is limited. Here, the coral mucus was sampled in situ following protocols commonly used to obtain mucus for assessments of prokaryotic communities (Apprill et al. 2016; Aguirre et al. 2022), which were sufficient enough here to return mucus samples distinct from the seawater—a source of potential error (Sweet et al. 2011). Similarly, Symbiodiniaceae DNA was obtained from tissue samples following the common airbrushing method (Camp et al. 2020) after mucus was removed prior to sample preservation. Therefore, the comparisons between tissue and mucus Symbiodiniaceae communities likely represent accurate biological similarities rather than artificial overlap due to cross contamination. Moreover, the large diversity of coral genera sampled here suggest the homogeneity among coral tissue and the mucus symbiont communities are not taxon-specific, but instead this approach can be applied across coral species. Finally, mucus sampling of coral completed under controlled aquarium conditions revealed no short- or long-term harmful effects on colonies, confirming this widely used technique is appropriate for repeat sampling.

4.3 | Conclusions

The potential of reef habitats to harbour genetic, functional and symbiotic diversity is of particular concern given the reliance of scleractinian coral on uptake of exogenous Symbiodiniaceae from environmental pools during the establishment and recovery of the holobiont. Here, the distinct, yet overlapping communities that reside within the sediment, ambient seawater and on neighbouring algae occupying Red Sea reefs add to a growing body of evidence that free-living habitats support a metacommunity of Symbiodiniaceae linked with the coral holobiont. This niche partitioning appears to break down across microhabitats within the holobiont, however, with Symbiodiniaceae communities in the coral tissue and mucus remaining nearly identical despite persistent differences in the prokaryotic communities across this same scale. While the dynamics of endosymbiotic Symbiodiniaceae communities has been of particular focus, the origin and fate of coral mucus communities may offer

additional insight into the maintenance, breakdown, and/or recovery of this ecologically important symbiosis. Considering its ease and minimal invasiveness, sampling coral mucus offers a useful tool to not only investigate coral mucus itself but also to obtain a glimpse of the endosymbiosis within.

Author Contributions

Wyatt C. Million: methodology, data curation, investigation, validation, formal analysis, visualization, writing – review and editing, writing – original draft, software. **Christian R. Voolstra:** resources, writing – review and editing, funding acquisition, supervision, validation. **Gabriela Perna:** methodology, investigation, writing – review and editing. **Giulia Puntin:** methodology, investigation, writing – review and editing, data curation. **Katherine Rowe:** methodology, investigation, writing – review and editing. **Maren Ziegler:** conceptualization, methodology, validation, funding acquisition, writing – review and editing, project administration, resources, supervision.

Acknowledgements

We would like to thank Benjamin C.C. Hume for running the data through the SymPortal pipeline and discussions of the results. We acknowledge the KAUST Bioscience Core Lab for assistance with sequencing. Research reported in this publication was supported by baseline funds to C.R.V. from KAUST and funded by the Deutsche Forschungsgemeinschaft (DFG, German Research Foundation)—project number: 469364832 (M.Z.)—SPP 2299/project number 441832482. The time-series mucus sampling was conducted in the “Ocean2100” global change simulation facility of the Colombian-German Center of Excellence in Marine Sciences (CEMarin) funded by the German Academic Exchange Service. Open Access funding enabled and organized by Projekt DEAL.

Conflicts of Interest

The authors declare no conflicts of interest.

Data Availability Statement

Sequence data determined in this study are available under NCBI BioProject ID PRJNA1157714 and accessible in the SymPortal Database at https://symportal.org/data_explorer/?Study=202108_redsea_coral_microhabitats and https://symportal.org/data_explorer/?Study=202108_redsea_environmental_niches. Source data underlying figures and statistical analyses are provided at https://github.com/wyattmilli/MucusTissueEnvironment_SymITS2.

References

- Aguirre, E. G., W. C. Million, E. Bartels, C. J. Krediet, and C. D. Kenkel. 2022. “Host-Specific Epibiomes of Distinct *Acropora cervicornis* Genotypes Persist After Field Transplantation.” *Coral Reefs* 41, no. 2 (April): 265–276.
- Ali, A., N. G. Kriefall, L. E. Emery, C. D. Kenkel, M. V. Matz, and S. W. Davies. 2019. “Recruit Symbiosis Establishment and Symbiodiniaceae Composition Influenced by Adult Corals and Reef Sediment.” *Coral Reefs* 38, no. 3 (June): 405–415.
- Apprill, A., L. G. Weber, and A. E. Santoro. 2016. “Distinguishing Between Microbial Habitats Unravels Ecological Complexity in Coral Microbiomes.” *mSystems* 1, no. 5 (October): 10–128.
- Barott, K. L., A. A. Venn, S. O. Perez, S. Tambutté, and M. Tresguerres. 2015. “Coral Host Cells Acidify Symbiotic Algal Microenvironment to Promote Photosynthesis.” *Proceedings of the National Academy of Sciences of the United States of America* 112, no. 2 (January): 607–612.

- Bhagooli, R., and M. Hidaka. 2004. "Release of Zooxanthellae With Intact Photosynthetic Activity by the Coral *Galaxea fascicularis* in Response to High Temperature Stress." *Marine Biology* 145, no. 2 (August): 329–337.
- Bongaerts, P., C. Riginos, T. Ridgway, et al. 2010. "Genetic Divergence Across Habitats in the Widespread Coral *Seriatopora hystrix* and Its Associated *Symbiodinium*." *PLoS One* 5, no. 5 (May): e10871.
- Boulotte, N. M., S. J. Dalton, A. G. Carroll, et al. 2016. "Exploring the *Symbiodinium* Rare Biosphere Provides Evidence for Symbiont Switching in Reef-Building Corals." *ISME Journal* 10, no. 11 (November): 2693–2701.
- Brown, B. E., and J. C. Bythell. 2005. "Perspectives on Mucus Secretion in Reef Corals." *Marine Ecology Progress Series* 296 (July): 291–309.
- Buddemeier, R. W., and D. G. Fautin. 1993. "Coral Bleaching as an Adaptive Mechanism." *Bioscience* 43, no. 5: 320–326.
- Bythell, J. C., and C. Wild. 2011. "Biology and Ecology of Coral Mucus Release." *Journal of Experimental Marine Biology and Ecology* 408, no. 1 (November): 88–93.
- Camp, E. F., D. J. Suggett, C. Pogoreutz, et al. 2020. "Corals Exhibit Distinct Patterns of Microbial Reorganisation to Thrive in an Extreme Inshore Environment." *Coral Reefs* 39, no. 3 (June): 701–716.
- Coffroth, M. A., C. F. Lewis, S. R. Santos, and J. L. Weaver. 2006. "Environmental Populations of Symbiotic Dinoflagellates in the Genus *Symbiodinium* Can Initiate Symbioses With Reef Cnidarians." *Current Biology* 16, no. 23 (December): R985–R987.
- Cunning, R., P. Gillette, T. Capo, K. Galvez, and A. C. Baker. 2015a. "Growth Tradeoffs Associated With Thermotolerant Symbionts in the Coral *Pocillopora damicornis* Are Lost in Warmer Oceans." *Coral Reefs* 34, no. 1 (March): 155–160.
- Cunning, R., R. N. Silverstein, and A. C. Baker. 2015b. "Investigating the Causes and Consequences of Symbiont Shuffling in a Multi-Partner Reef Coral Symbiosis Under Environmental Change." *Proceedings of the Biological Sciences* 282, no. 1809 (June): 20141725.
- Cunning, R., D. M. Yost, M. L. Guarinello, H. M. Putnam, and R. D. Gates. 2015c. "Variability of *Symbiodinium* Communities in Waters, Sediments, and Corals of Thermally Distinct Reef Pools in American Samoa." *PLoS One* 10, no. 12 (December): e0145099.
- D Ainsworth, T., L. Krause, T. Bridge, et al. 2015. "The Coral Core Microbiome Identifies Rare Bacterial Taxa as Ubiquitous Endosymbionts." *ISME Journal* 9, no. 10 (October): 2261–2274.
- Davies, S. W., M. H. Gamache, L. I. Howe-Kerr, et al. 2023. "Building Consensus Around the Assessment and Interpretation of Symbiodiniaceae Diversity." *PeerJ* 11 (May): e15023.
- Diaz-Almeyda, E. M., C. Prada, A. H. Ohdera, et al. 2017. "Intraspecific and Interspecific Variation in Thermotolerance and Photoacclimation in *Symbiodinium* Dinoflagellates." *Proceedings of the Biological Sciences* 284, no. 1868 (December): 20171767.
- Ducklow, H. W., and R. Mitchell. 1979. "Bacterial Populations and Adaptations in the Mucus Layers on Living Corals1." *Limnology and Oceanography* 24, no. 4 (July): 715–725.
- Elder, H., W. C. Million, E. Bartels, C. J. Krediet, E. M. Muller, and C. D. Kenkel. 2023. "Long-Term Maintenance of a Heterologous Symbiont Association in *Acropora palmata* on Natural Reefs." *ISME Journal* 17, no. 3: 486–489.
- Fujise, L., D. J. Suggett, M. Stat, et al. 2021. "Unlocking the Phylogenetic Diversity, Primary Habitats, and Abundances of Free-Living Symbiodiniaceae on a Coral Reef." *Molecular Ecology* 30, no. 1: 343–360.
- Gajigan, A. P., L. A. Diaz, and C. Conaco. 2017. "Resilience of the Prokaryotic Microbial Community of *Acropora Digitifera* to Elevated Temperature." *MicrobiologyOpen* 6, no. 4 (August): e00478.
- Gehlenborg, N. 2017. "UpSetR: A More Scalable Alternative to Venn and Euler Diagrams for Visualizing Intersecting Sets." *Bioinformatics* 33, no. 18: 2938–2940.
- Gleason, D. F., and G. M. Wellington. 1993. "Ultraviolet Radiation and Coral Bleaching." *Nature* 365, no. 6449 (October): 836–838.
- Hoadley, K. D., A. M. Lewis, D. C. Wham, et al. 2019. "Host-Symbiont Combinations Dictate the Photo-Physiological Response of Reef-Building Corals to Thermal Stress." *Scientific Reports* 9, no. 1 (July): 1–15.
- Hoegh-Guldberg, O., L. R. McCloskey, and L. Muscatine. 1987. "Expulsion of Zooxanthellae by Symbiotic Cnidarians From the Red Sea." *Coral Reefs* 5, no. 4 (April): 201–204.
- Hoogenboom, M., R. Rodolfo-Metalpa, and C. Ferrier-Pagès. 2010. "Co-Variation Between Autotrophy and Heterotrophy in the Mediterranean Coral *Cladocora caespitosa*." *Journal of Experimental Biology* 213, no. Pt 14 (July): 2399–2409.
- Houlbrèque, F., and C. Ferrier-Pagès. 2009. "Heterotrophy in Tropical Scleractinian Corals." *Biological Reviews of the Cambridge Philosophical Society* 84, no. 1: 1–17.
- Hughes, D. J., J. B. Raina, D. A. Nielsen, D. J. Suggett, and M. Köhl. 2022. "Disentangling Compartment Functions in Sessile Marine Invertebrates." *Trends in Ecology & Evolution* 37, no. 9 (September): 740–748.
- Hume, B., C. D'Angelo, J. Burt, A. C. Baker, B. Riegl, and J. Wiedenmann. 2013. "Corals From the Persian/Arabian Gulf as Models for Thermotolerant Reef-Builders: Prevalence of Clade C3 *Symbiodinium*, Host Fluorescence and Ex Situ Temperature Tolerance." *Marine Pollution Bulletin* 72, no. 2 (July): 313–322.
- Hume, B. C. C., A. Mejia-Restrepo, C. R. Voolstra, and M. L. Berumen. 2020. "Fine-Scale Delineation of Symbiodiniaceae Genotypes on a Previously Bleached Central Red Sea Reef System Demonstrates a Prevalence of Coral Host-Specific Associations." *Coral Reefs* 39, no. 3 (June): 583–601.
- Hume, B. C. C., E. G. Smith, M. Ziegler, et al. 2019. "SymPortal: A Novel Analytical Framework and Platform for Coral Algal Symbiont Next-Generation Sequencing ITS2 Profiling." *Molecular Ecology Resources* 19, no. 4: 1063–1080.
- Hume, B. C. C., M. Ziegler, J. Poulain, et al. 2018. "An Improved Primer Set and Amplification Protocol With Increased Specificity and Sensitivity Targeting the Symbiodinium ITS2 Region." *PeerJ* 6 (May): e4816.
- Huntley, N., M. E. Brandt, C. C. Becker, et al. 2022. "Experimental Transmission of Stony Coral Tissue Loss Disease Results in Differential Microbial Responses Within Coral Mucus and Tissue." *ISME Communications* 2, no. 1 (May): 1–11.
- Jokiel, P. L. 2004. "Temperature Stress and Coral Bleaching." In *Coral Health and Disease*, edited by E. Rosenberg and Y. Loya, 401–425. Springer Berlin Heidelberg.
- Kelly, L. W., C. E. Nelson, D. Petras, et al. 2022. "Distinguishing the Molecular Diversity, Nutrient Content, and Energetic Potential of Exometabolomes Produced by Macroalgae and Reef-Building Corals." *Proceedings of the National Academy of Sciences* 119, no. 5: e2110283119.
- Keshavmurthy, S., C. M. Hsu, C. Y. Kuo, P. J. Meng, J. T. Wang, and C. A. Chen. 2012. "Symbiont Communities and Host Genetic Structure of the Brain Coral *Platygyra verweyi*, at the Outlet of a Nuclear Power Plant and Adjacent Areas." *Molecular Ecology* 21, no. 17 (September): 4393–4407.
- LaJeunesse, T. C., J. E. Parkinson, P. W. Gabrielson, et al. 2018. "Systematic Revision of Symbiodiniaceae Highlights the Antiquity and Diversity of Coral Endosymbionts." *Current Biology* 28, no. 16 (August): 2570–2580.e6.
- Little, A. F., M. J. H. van Oppen, and B. L. Willis. 2004. "Flexibility in Algal Endosymbioses Shapes Growth in Reef Corals." *Science* 304, no. 5676 (June): 1492–1494.

- Marchioro, G. M., B. Glasl, A. H. Engelen, et al. 2020. "Microbiome Dynamics in the Tissue and Mucus of Acroporid Corals Differ in Relation to Host and Environmental Parameters." *PeerJ* 8(August): e9644.
- Matz, M. V. 2016. "MCMC.OTU: Bayesian Analysis of Multivariate Counts Data in DNA Metabarcoding and Ecology." 1, no. 10.
- McMurdie, P. J., and S. Holmes. 2013. "Phyloseq: An R Package for Reproducible Interactive Analysis and Graphics of Microbiome Census Data." *PLoS One* 8, no. 4 (April): e61217.
- Meikle, P., G. N. Richards, and D. Yellowlees. 1988. "Structural Investigations on the Mucus From Six Species of Coral." *Marine Biology* 99, no. 2 (September): 187–193.
- Mihaljevic, J. R. 2012. "Linking Metacommunity Theory and Symbiont Evolutionary Ecology." *Trends in Ecology & Evolution* 27, no. 6 (June): 323–329.
- Mills, M. M., F. Lipschultz, and K. P. Sebens. 2004. "Particulate Matter Ingestion and Associated Nitrogen Uptake by Four Species of Scleractinian Corals." *Coral Reefs* 23, no. 3: 311–323.
- Morris, L. A., C. R. Voolstra, K. M. Quigley, and D. G. Bourne. 2019. "Nutrient Availability and Metabolism Affect the Stability of Coral–Symbiodiniaceae Symbioses." *Trends in Microbiology* 27, no. 8 (August): 678–689.
- Muller, E. M., E. Bartels, and I. B. Baums. 2018. "Bleaching Causes Loss of Disease Resistance Within the Threatened Coral Species *Acropora cervicornis*." *eLife* 7 (September): e35066.
- Muscattine, L., and J. W. Porter. 1977. "Reef Corals: Mutualistic Symbioses Adapted to Nutrient-Poor Environments." *Bioscience* 27, no. 7 (July): 454–460.
- Naumann, M. S., C. Richter, M. el-Zibdah, and C. Wild. 2009. "Coral Mucus as an Efficient Trap for Picoplanktonic Cyanobacteria: Implications for Pelagic–Benthic Coupling in the Reef Ecosystem." *Marine Ecology Progress Series* 385(June): 65–76.
- Nitschke, M. R., S. K. Davy, and S. Ward. 2016. "Horizontal Transmission of *Symbiodinium* Cells Between Adult and Juvenile Corals Is Aided by Benthic Sediment." *Coral Reefs* 35, no. 1 (March): 335–344.
- Nitschke, M. R., S. L. Rosset, C. A. Oakley, et al. 2022. "Chapter Two—The Diversity and Ecology of Symbiodiniaceae: A Traits-Based Review." In *Advances in Marine Biology*, edited by C. Sheppard, 55–127. Academic Press.
- Oksanen, J., G. L. Simpson, F. G. Blanchet, et al. 2022. "Vegan: Community Ecology Package." R Package Version 2.6–4. <https://CRAN.R-project.org/package=vegan>.
- Parkinson, J. E., E. Bartels, M. K. Devlin-Durante, et al. 2018. "Extensive Transcriptional Variation Poses a Challenge to Thermal Stress Biomarker Development for Endangered Corals." *Molecular Ecology* 27, no. 5 (March): 1103–1119.
- Parkinson, J. E., and I. B. Baums. 2014. "The Extended Phenotypes of Marine Symbioses: Ecological and Evolutionary Consequences of Intraspecific Genetic Diversity in Coral–Algal Associations." *Frontiers in Microbiology* 5(August): 445.
- Parkinson, J. E., M. A. Coffroth, and T. C. LaJeunesse. 2015. "New Species of Clade B *Symbiodinium* (Dinophyceae) From the Greater Caribbean Belong to Different Functional Guilds: *S. aenigmaticum* sp. nov., *S. antillogorgium* sp. nov., *S. endomadracis* sp. nov., and *S. pseudominutum* sp. nov." *Journal of Phycology* 51, no. 5: 850–858.
- Pettay, D. T., D. C. Wham, J. H. Pinzón, and T. C. LaJeunesse. 2011. "Genotypic Diversity and Spatial-Temporal Distribution of Symbiodinium Clones in an Abundant Reef Coral." *Molecular Ecology* 20, no. 24: 5197–5212.
- Pettay, D. T., D. C. Wham, R. T. Smith, R. Iglesias-Prieto, and T. C. LaJeunesse. 2015. "Microbial Invasion of the Caribbean by an Indo-Pacific Coral Zooxanthella." *Proceedings of the National Academy of Sciences of the United States of America* 112, no. 24 (June): 7513–7518.
- Pochon, X., M. Stat, M. Takabayashi, et al. 2010. "Comparison of Endosymbiotic and Free-Living *Symbiodinium* (Dinophyceae) Diversity in a Hawaiian Reef Environment." *Journal of Phycology* 46, no. 1 (January): 53–65.
- Pollock, F. J., R. McMinds, S. Smith, et al. 2018. "Coral-Associated Bacteria Demonstrate Phylosymbiosis and Cophylogeny." *Nature Communications* 9, no. 1 (November): 1–13.
- Quigley, K. M., S. W. Davies, C. D. Kenkel, B. L. Willis, M. V. Matz, and L. K. Bay. 2014. "Deep-Sequencing Method for Quantifying Background Abundances of *Symbiodinium* Types: Exploring the Rare *Symbiodinium* Biosphere in Reef-Building Corals." *PLoS One* 9, no. 4 (April): e94297.
- R Core Team. 2020. "R: A Language and Environment for Statistical Computing." <https://www.R-project.org/>.
- Ralph, P. J., R. Gademann, and A. W. D. Larkum. 2001. "Zooxanthellae Expelled From Bleached Corals at 33°C Are Photosynthetically Competent." *Marine Ecology Progress Series* 220(September): 163–168.
- Rohwer, F., M. Breitbart, J. Jara, F. Azam, and N. Knowlton. 2001. "Diversity of Bacteria Associated With the Caribbean Coral *Montastraea franksi*." *Coral Reefs* 20, no. 1 (August): 85–91.
- Sampayo, E. M., T. Ridgway, P. Bongaerts, and O. Hoegh-Guldberg. 2008. "Bleaching Susceptibility and Mortality of Corals Are Determined by Fine-Scale Differences in Symbiont Type." *Proceedings of the National Academy of Sciences of the United States of America* 105, no. 30 (July): 10444–10449.
- Schubert, P., and T. Wilke. 2018. "Coral Microcosms: Challenges and Opportunities for Global Change Biology." *Corals in a Changing World* 8: 143–175.
- Stanley, G. D., Jr. 2006. "Ecology. Photosymbiosis and the Evolution of Modern Coral Reefs." *Science* 312, no. 5775 (May): 857–858.
- Stat, M., E. Morris, and R. D. Gates. 2008. "Functional Diversity in Coral–Dinoflagellate Symbiosis." *Proceedings of the National Academy of Sciences* 105, no. 27: 9256–9261.
- Stimson, J., and R. A. Kinzie. 1991. "The Temporal Pattern and Rate of Release of Zooxanthellae From the Reef Coral *Pocillopora damicornis* (Linnaeus) Under Nitrogen-Enrichment and Control Conditions." *Journal of Experimental Marine Biology and Ecology* 153, no. 1 (November): 63–74.
- Sweet, M. J. 2014. "*Symbiodinium* Diversity Within *Acropora muricata* and the Surrounding Environment." *Marine Ecology* 35, no. 3 (September): 343–353.
- Sweet, M. J., A. Croquer, and J. C. Bythell. 2011. "Bacterial Assemblages Differ Between Compartments Within the Coral Holobiont." *Coral Reefs* 30: 39–52.
- Thompson, J. R., H. E. Rivera, C. J. Closek, and M. Medina. 2014. "Microbes in the Coral Holobiont: Partners Through Evolution, Development, and Ecological Interactions." *Frontiers in Cellular and Infection Microbiology* 4: 176.
- Thornhill, D. J., T. C. Lajeunesse, and S. R. Santos. 2007. "Measuring rDNA Diversity in Eukaryotic Microbial Systems: How Intra-genomic Variation, Pseudogenes, and PCR Artifacts Confound Biodiversity Estimates." *Molecular Ecology* 16, no. 24: 5326–5340.
- Tremblay, P., R. Grover, J. F. Maguer, L. Legendre, and C. Ferrier-Pagès. 2012. "Autotrophic Carbon Budget in Coral Tissue: A New ¹³C-Based Model of Photosynthate Translocation." *Journal of Experimental Biology* 215, no. Pt 8 (April): 1384–1393.
- van Oppen, M. J. H., and J. B. Raina. 2023. "Coral Holobiont Research Needs Spatial Analyses at the Microbial Scale." *Environmental Microbiology* 25, no. 1 (January): 179–183.
- Venera-Ponton, D. E., G. Diaz-Pulido, M. Rodriguez-Lanetty, and O. Hoegh-Guldberg. 2010. "Presence of *Symbiodinium* spp. in Macroalgal Microhabitats From the Southern Great Barrier Reef." *Coral Reefs* 29, no. 4 (December): 1049–1060.

Wakefield, T. S., and S. C. Kempf. 2001. "Development of Host- and Symbiont-Specific Monoclonal Antibodies and Confirmation of the Origin of the Symbiosome Membrane in a Cnidarian–Dinoflagellate Symbiosis." *Biological Bulletin* 200, no. 2 (April): 127–143.

Wild, C., M. Huettel, A. Klueter, S. G. Kremb, M. Y. M. Rasheed, and B. B. Jørgensen. 2004. "Coral Mucus Functions as an Energy Carrier and Particle Trap in the Reef Ecosystem." *Nature* 428, no. 6978 (March): 66–70.

Xiao, L., S. Johansson, S. Rughöft, et al. 2022. "Photophysiological Response of Symbiodiniaceae Single Cells to Temperature Stress." *ISME Journal* 16, no. 8 (August): 2060–2064.

Yamashita, H., G. Suzuki, T. Hayashibara, and K. Koike. 2011. "Do Corals Select Zooxanthellae by Alternative Discharge?" *Marine Biology* 158, no. 1 (January): 87–100.

Yellowlees, D., T. A. V. Rees, and W. Leggat. 2008. "Metabolic Interactions Between Algal Symbionts and Invertebrate Hosts." *Plant, Cell & Environment* 31, no. 5: 679–694.

Ziegler, M., C. Arif, J. A. Burt, et al. 2017. "Biogeography and Molecular Diversity of Coral Symbionts in the Genus *Symbiodinium* Around the Arabian Peninsula." *Journal of Biogeography* 44, no. 3: 674–686.

Ziegler, M., C. Roder, C. Büchel, and C. R. Voolstra. 2015. "Niche Acclimatization in Red Sea Corals Is Dependent on Flexibility of Host-Symbiont Association." *Marine Ecology Progress Series* 533(August): 149–161.

Ziegler, M., E. Stone, D. Colman, C. Takacs-Vesbach, and U. Shepherd. 2018. "Patterns of *Symbiodinium* (Dinophyceae) Diversity and Assemblages Among Diverse Hosts and the Coral Reef Environment of Lizard Island, Australia." *Journal of Phycology* 54, no. 4: 447–460.

Supporting Information

Additional supporting information can be found online in the Supporting Information section.