

Cite this: *RSC Chem. Biol.*, 2022, **3**, 1240

## Canavanine utilization *via* homoserine and hydroxyguanidine by a PLP-dependent $\gamma$ -lyase in *Pseudomonadaceae* and *Rhizobiales*<sup>†</sup>

Franziskus Hauth,<sup>id</sup><sup>ab</sup> Hiltrun Buck,<sup>a</sup> Marco Stanoppi<sup>a</sup> and Jörg S. Hartig<sup>\*ab</sup>

Canavanine, the  $\delta$ -oxa-analogue of arginine, is produced as one of the main nitrogen storage compounds in legume seeds and has repellent properties. Its toxicity originates from incorporation into proteins as well as arginase-mediated hydrolysis to canaline that forms stable oximes with carbonyls. So far no pathway or enzyme has been identified acting specifically on canavanine. Here we report the characterization of a novel PLP-dependent enzyme, canavanine- $\gamma$ -lyase, that catalyzes the elimination of hydroxyguanidine from canavanine to subsequently yield homoserine. Homoserine-dehydrogenase, aspartate-semialdehyde-dehydrogenase and ammonium-aspartate-lyase activities are also induced for facilitating canavanine utilization. We demonstrate that this novel pathway is found in certain *Pseudomonas* species and the *Rhizobiales* symbionts of legumes. The findings broaden the diverse reactions that the versatile class of PLP-dependent enzymes is able to catalyze. Since canavanine utilization is found prominently in root-associated bacteria, it could have important implications for the establishment and maintenance of the legume rhizosphere.

Received 24th May 2022,  
Accepted 18th August 2022

DOI: 10.1039/d2cb00128d

rsc.li/rsc-chembio

### Introduction

Non-proteinogenic amino acids represent a large group of metabolites with diverse and often unexplored functions.<sup>1</sup> Some non-canonical amino acids act as so-called antimetabolites by mimicking proteinogenic amino acids and thereby interfere with their respective functions. L-Canavanine, or  $\delta$ -oxa-arginine, serves as an antimetabolite of L-arginine. It was first discovered and isolated in 1929 from jack bean (*Canavalia ensiformis*)<sup>2</sup> and further experiments revealed the structural similarity to arginine.<sup>3</sup> The discovery a specific colorimetric reaction of pentacyanoammoniumferrate with canavanine enabled extensive surveys of its distribution among plants.<sup>4</sup> Although the occurrence of canavanine is limited to legumes,<sup>5</sup> a major subfamily of *Fabaceae*, it often serves as the main nitrogen storage compound in seeds with a content of up to ~12% of the seeds' dry weight.<sup>6</sup> During germination, canavanine catabolism produces canaline and urea, which are further degraded to homoserine, CO<sub>2</sub> and ammonia.<sup>7</sup> However, canavanine is also found in the root exudate of young plants.<sup>8,9</sup>

Interestingly, the ability to reduce canaline to homoserine and ammonia is thought to be unique to higher plants,<sup>7</sup> opening the legume the possibility to use canavanine as a toxic repellent against herbivores and pathogens. The toxic effects of canavanine originate from the mimicry of arginine, thereby interfering with arginine metabolism and protein functions when incorporated during translation. Arginase-catalysed hydrolysis of canavanine yields canaline, which forms stable oximes with  $\alpha$ -ketoglutarate and other carbonyl-containing compounds causing deleterious effects in the tricarboxylic acid cycle.<sup>10</sup> Also, arginyl-tRNA synthetases are usually not able to discriminate between arginine and its antimetabolite resulting in the incorporation of canavanine into nascent polypeptide chains and in the formation of dysfunctional proteins.<sup>11,12</sup>

Some insects have adapted different strategies to circumvent canavanine toxicity. While *Drosophila* detects it by taste as a repulsive molecule,<sup>13</sup> the tobacco budworm *Chloridea virescens* (formerly *Heliothis virescens*) is able to degrade canavanine by a putative, so far uncharacterized gut enzyme.<sup>11,14</sup> In bacteria two early reports concerned with canavanine degradation reported its cleavage to homoserine and either guanidine or hydroxyguanidine but the molecular basis for this observation is unknown.<sup>15,16</sup> We have recently become interested in the occurrence of free guanidine in nature. We and others discovered so far four different riboswitches that selectively sense guanidine in bacteria.<sup>17–21</sup> Moreover, selective degradation pathways exist to utilize guanidine as nitrogen sources.<sup>17,22–24</sup>

<sup>a</sup> Department of Chemistry, University of Konstanz, Universitätsstraße 10, 78457 Konstanz, Germany. E-mail: joerg.hartig@uni-konstanz.de; Tel: +49 7531 88 4575  
<sup>b</sup> Konstanz Research School Chemical Biology (KoRS-CB), University of Konstanz, Universitätsstraße 10, 78457 Konstanz, Germany

<sup>†</sup> Electronic supplementary information (ESI) available. See DOI: <https://doi.org/10.1039/d2cb00128d>



Following the clarification of guanidine degradation, we are currently investigating biotic sources of guanidine and close derivatives. The present work describes the first specific canavanine degradation pathway. By enrichment on canavanine as sole carbon source we obtained a novel *Pseudomonad* species that is growing efficiently on canavanine as sole nitrogen and carbon source. We identified the enzymes responsible for the utilization by comparative proteomics and characterized the key reaction of canavanine degradation to be carried out by a PLP-dependent canavanine- $\gamma$ -lyase. We further investigate additional enzymatic activities and the distribution of this newly described degradation pathway in the rhizosphere. In summary, canavanine is utilized efficiently by certain legume-associated bacteria. The plant-based synthesis of canavanine and its specific utilization by certain root-associated bacteria could contribute to shaping the composition of the rhizosphere.

## Results

### Enrichment of canavanine-degrading bacteria

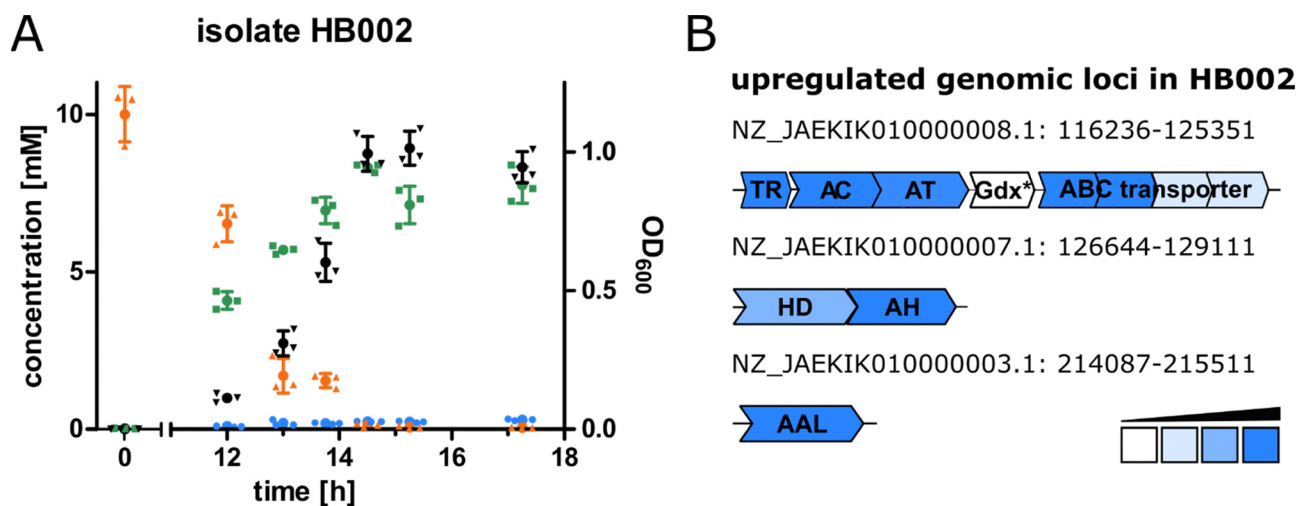
For the purpose of isolating bacteria able to degrade canavanine, we collected rhizosphere soil samples of the legume *Phaseolus coccineus* (runners bean) and isolated bacterial strains that were able to grow on minimal medium plates containing canavanine as sole carbon source. In order to differentiate between bacteria involuntarily using canavanine *via* the already reported arginase-mediated hydrolysis to canaline and urea and bacteria producing guanidine or hydroxyguanidine we further cultivated bacterial isolates in liquid medium and analysed culture supernatants by mass spectrometry (MS) for guanidine and hydroxyguanidine contents. Interestingly, upon growth on 10 mM canavanine as carbon

source most isolates produced only small amounts of guanidine ( $< 500 \mu\text{M}$  in the supernatant), while accumulating hydroxyguanidine in concentrations up to 8 mM (Fig. 1A). The increase of hydroxyguanidine correlates with the decrease of canavanine, suggesting a cleavage of canavanine to hydroxyguanidine and homoserine, as it has been observed for the tobacco budworm.<sup>14</sup> In a further experiment we omitted ammonium salts as nitrogen source in order to evaluate whether canavanine can serve as sole nitrogen source as well. Isolate HB002 was able to grow on M8 minimal salt medium with canavanine as sole carbon and nitrogen source and we did not observe any differences in optical densities or in accumulated amounts of hydroxyguanidine (Fig. S1, ESI<sup>†</sup>).

The bacterial sample with the highest guanidine and hydroxyguanidine levels (isolate HB002) was further investigated. Based on 16S rRNA gene analysis, genome sequencing (DDBJ/ENA/GenBank accession number JAEKIK000000000), digital DNA–DNA hybridization, average nucleotide identity, and phenotypic description, we identified the isolated canavanine-degrading bacterium as a novel species belonging to the genus *Pseudomonas*. We named the bacterium *Pseudomonas canavaninivorans* (HB002<sup>T</sup> = DSM 112525<sup>T</sup> = LGM 32336<sup>T</sup>) for its ability to grow on canavanine as sole C- and N-source. A detailed phenotypic and taxonomic characterization of *P. canavaninivorans* is described elsewhere.<sup>25</sup>

### Analysis of canavanine-dependent gene expression

In order to examine the genes involved in canavanine degradation *P. canavaninivorans* was either grown on canavanine or glycerol as sole carbon source and differences in protein expression levels were detected by comparative proteome analysis. Among the 1610 proteins identified (Table S1, ESI<sup>†</sup>)



**Fig. 1** (A) Concentration of canavanine (orange), guanidine (blue) and hydroxyguanidine (green) in the supernatant of isolate HB002 grown on 10 mM canavanine as sole carbon source in M9 minimal medium, values represent the mean of triplicates measured over time, optical density of the corresponding cultures is shown in black,  $n = 3$ , error bars = SD. (B) Genomic loci of induced proteins (located in the genome of HB002, NCBI accession number JAEKIK000000000) in isolate HB002 upon growth on canavanine compared to growth on glycerol. Except for HD and two of the ABC transporter units all proteins shown were only detected in the canavanine-grown sample. Abbreviations: TR: transcriptional regulator, AC/AH: aldehyde dehydrogenases, AT: class I/II aminotransferase, Gdx: guanidine exporter (\*not detected in the proteome analysis), ABC: ATP binding cassette, HD: homoserine dehydrogenase, AAL: ammonium aspartate lyase.



45 were only expressed upon growth on canavanine. Of those 45 proteins, seven cluster together in the same genetic locus. Among those proteins is a class I/II PLP-dependent aminotransferase (MBJ2347155.1, further referred to as AT) and an aldehyde dehydrogenase (MBJ2347154.1, further referred to as AC) which cluster together with a transcription factor, a guanidine exporter<sup>26</sup> (MBJ2347156.1, further referred to as Gdx) and four subunits of an ATP-binding cassette-type transporter (MBJ2347157.1-MBJ2347160.1, further referred to as ABC transporter) (Fig. 1B). In addition, we found a highly upregulated homoserine-dehydrogenase (MBJ2346999.1, further referred to as HD) with yet another aldehyde-dehydrogenase (MBJ2347000.1, further referred to as AH) clustering together and at a separate locus an aspartate-ammonia-lyase (MBJ2345991.1, further referred to as AAL) (Fig. 1B). We speculated that the potential operon in conjunction with the other enzymes is enabling *P. canavaninivorans* to utilize canavanine as sole carbon source, as they were amongst the most abundant proteins found in the canavanine-grown sample.

As a key enzyme in canavanine degradation we suspected the class I/II PLP-dependent aminotransferase (AT), because individuals of this general class of enzymes are known to catalyze a variety of different reactions with amino acid substrates ranging from decarboxylation, racemization and transamination to replacement and elimination reactions.<sup>27</sup> In order to gain more insight into potential reactions performed by the PLP-dependent AT, we performed an advanced sequence search against the RCSB protein data bank. The most similar hit was a

methionine- $\gamma$ -lyase (M $\gamma$ L) of *Clostridium sporonges*.<sup>28</sup> We speculated that in analogy to M $\gamma$ L, the identified AT could catalyze the elimination of hydroxyguanidine from canavanine with a subsequent water addition to yield homoserine as additional product (Fig. 2A). In order to test whether AT catalyzes the proposed reaction, we overexpressed purified enzyme the enzyme in *E. coli*.

### Characterization and reaction mechanism of canavanine- $\gamma$ -lyase

In a first experiment the aminotransferase (AT) was incubated with canavanine and the reaction was investigated using proton nuclear magnetic resonance spectrometry (<sup>1</sup>H-NMR) and MS. Canavanine was converted to homoserine in an enzyme- and time-dependent manner (Fig. 2B and Fig. S2A, ESI<sup>†</sup>). No changes in canavanine peak intensities were observed when AT was heat-inactivated prior to the reaction (Fig. 2B, blue spectrum), while with active enzyme after one hour the majority of canavanine was converted to homoserine (Fig. 2B, red spectrum). Furthermore, in consistency with the *in vivo* growth experiment (Fig. 1A) MS measurements of reactions with purified AT revealed an increase of hydroxyguanidine with a simultaneous decrease of canavanine over time (Fig. 2C). <sup>1</sup>H-NMR also showed the formation of small amounts (<5% of product) of 2-oxobutanoate and ammonium (Fig. S3, ESI<sup>†</sup>), which is in accordance with a potential  $\beta,\gamma$ -elimination mechanism. For the methionine- $\gamma$ -lyase-catalyzed reaction of methionine it has been shown before that 2-oxobutanoate and

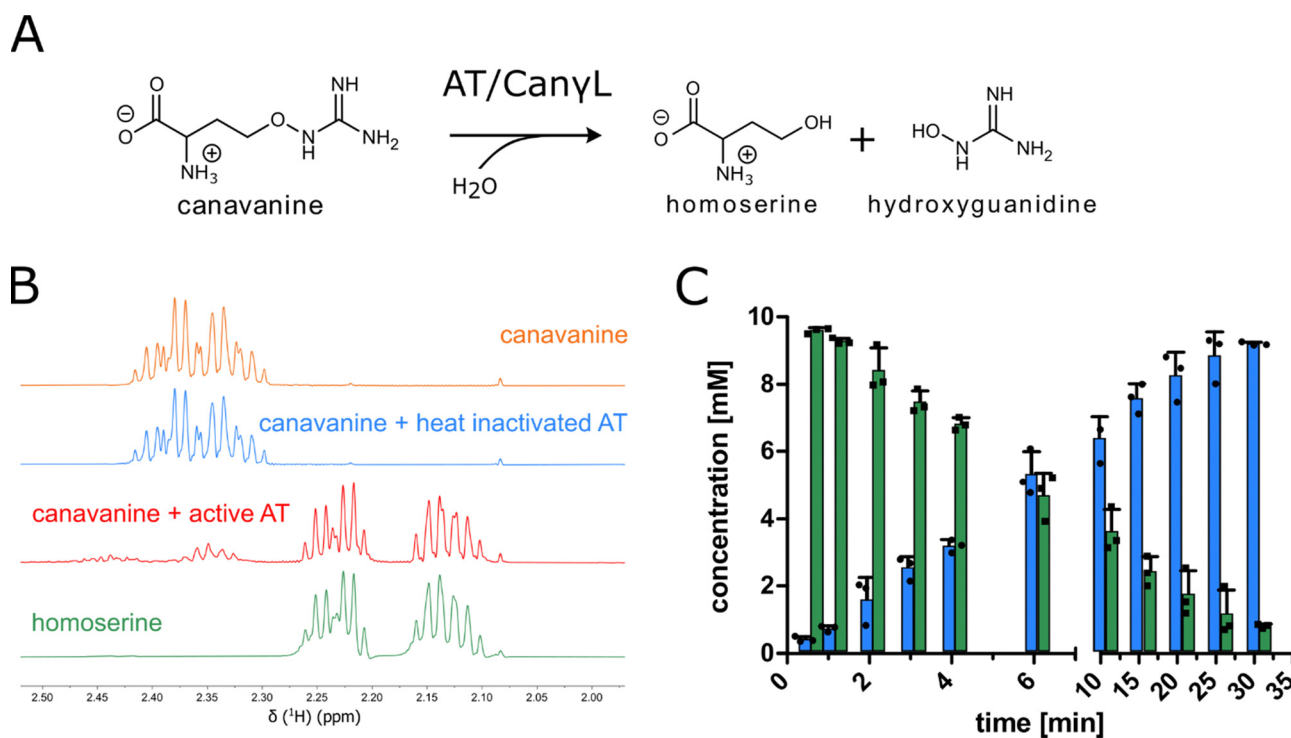


Fig. 2 (A) Proposed reaction catalyzed by aminotransferase AT (MBJ2347155.1). (B) <sup>1</sup>H-proton NMR spectra of reactions with purified AT showing the conversion of canavanine to homoserine (for complete spectra see item 1, ESI<sup>†</sup>). (C) MS concentration measurements of canavanine (green) and hydroxyguanidine (blue) in a reaction with purified AT, *n* = 3, error bars = SD, each data point represents the mean of a technical triplicate.



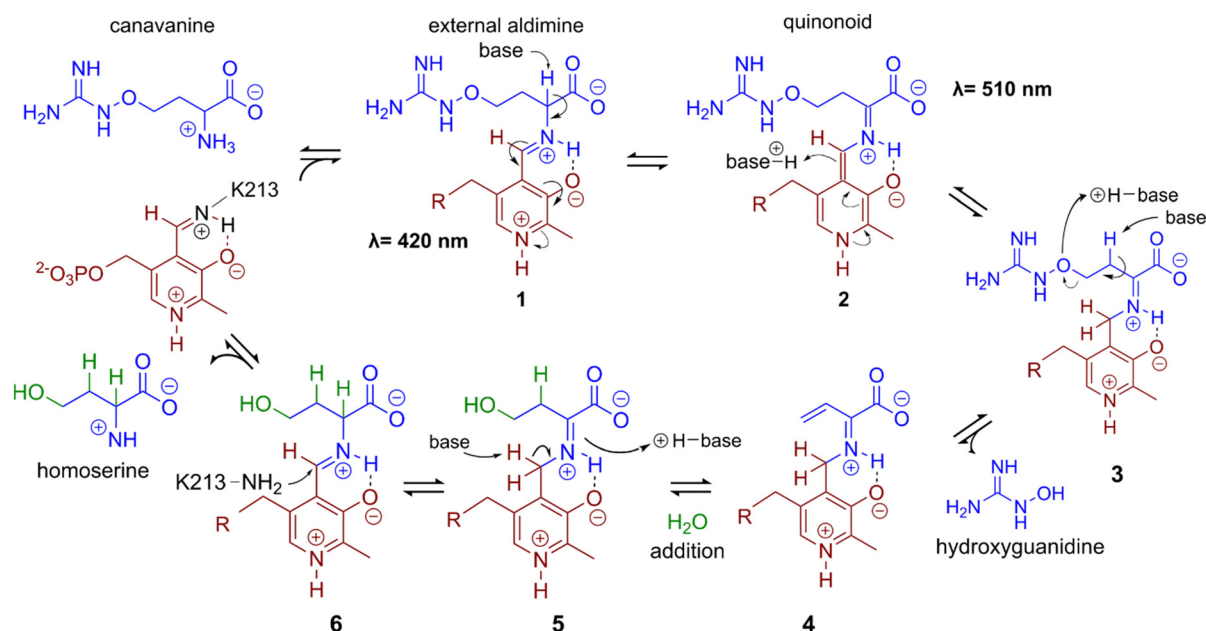
ammonium occur as products.<sup>29,30</sup> In the case of the newly identified AT, this reaction only seems to take place as a side reaction and homoserine is found as main product.

In order to shed light on the reaction mechanism of the AT, we performed a hydrogen/deuterium (H/D) exchange experiment. In case the reaction involves the addition of water to the unsaturated bond at the  $\beta,\gamma$ -position, carrying out the reaction in  $D_2O$  should lead to changes in some of the signals of homoserine recorded in the  $^1H$ -decoupled  $^{13}C$ -NMR experiment. Specifically, we expected a change of multiplicity for the signal assigned to the carbon atoms in the  $\alpha$  and  $\beta$  position as a result of the incorporation of deuterium into the molecule. Indeed, the obtained  $^{13}C$ -NMR data confirmed our hypothesis as the signals assigned to the  $\alpha$  and  $\beta$  carbon atoms changed their multiplicity from singlet to triplet with equally intense peaks (Fig. S4, ESI†). This outcome can be explained by the inclusion of a deuterium atom at the two positions which also confirms the protonation event from solvent  $D_2O$  in the last imine isomerization. The experiments let us conclude that the identified AT is a canavanine- $\gamma$ -lyase (Can $\gamma$ L) and allowed to suggest a likely reaction route (Scheme 1). First, canavanine reacts to form aldimine (1) between the alpha amino group of canavanine and the cofactor pyridoxal phosphate (PLP) formerly bound to an internal lysine. Then, protonation/deprotonation results in formation of quinonoid (2) and canavanine ketamine (3) followed by the elimination of hydroxyguanidine from the  $\beta$ - and  $\gamma$ -positions to yield the unsaturated vinylglycine ketamine intermediate (4). Next, water adds to the double bond in the  $\beta,\gamma$ -position forming the imine equivalent of homoserine (5). Imine isomerization to form the homoserine aldimine (6).

and reaction with the internal Can $\gamma$ L-lysine residue results in the release of the product homoserine. Alternatively, if release of the vinylglycine ketimine (4) from PLP takes place before water addition the reaction likely follows the described mechanism of methionine- $\gamma$ -lyase<sup>29,30</sup> to yield 2-oxobutanoate and ammonium, thereby explaining the formation of small quantities of these products (Fig. S3, ESI†).

Next, we characterized the substrate specificity of canavanine- $\gamma$ -lyase (Can $\gamma$ L) with the canavanine analogue arginine as well as substrates of the mechanistically related enzymes methionine- and cystathionine- $\gamma$ -lyase. We did not detect any turnover with arginine nor using the substrates methionine and cystathionine monitored by  $^1H$ -NMR (Fig. S5, ESI†), concluding that Can $\gamma$ L is highly specific for canavanine degradation. Further experiments at different pHs and temperatures revealed a pH optimum of Can $\gamma$ L between pH 6.9 and 8.0 and an optimal reaction temperature between 34.8 and 37 °C (Fig. S2B and C, ESI†) which is similar to reported values for the related enzyme methionine- $\gamma$ -lyase.<sup>31,32</sup> A kinetic characterization of Can $\gamma$ L was carried out by coupling the cleavage reaction of canavanine to the upregulated homoserine-dehydrogenase (HD) which catalyzes the conversion of homoserine and  $NAD^+$  to aspartate-semialdehyde and  $NADH$ . The production of  $NADH$  was monitored spectrophotometrically. HD was added in 20-fold excess over Can $\gamma$ L to ensure that the Can $\gamma$ L-catalyzed step is rate-limiting (Fig. S5A, ESI†). Plotting the initial velocities over the substrate concentration allowed us to calculate  $K_M$  and  $k_{cat}$ . Can $\gamma$ L converts canavanine with a  $K_M$  of  $590 \pm 20 \mu M$  and a  $k_{cat}$  of  $1.34 \pm 0.01 s^{-1}$ .

To confirm the involvement of PLP as a cofactor we then mutated the predicted active site lysine (K213), which is



**Scheme 1** A potential reaction mechanism of canavanine- $\gamma$ -lyase: starting with free canavanine, PLP-canavanine aldimine (1) formation, quinonoid (2) formation, canavanine ketamine (3) formation, elimination of hydroxyguanidine resulting in vinylglycine ketamine (4), water addition yielding homoserine ketamine (5), homoserine aldimine (6) formation, and release of homoserine by reformation of PLP-imine with the internal lysine. Wavelengths indicate UV-Vis maxima in UV-Vis data shown in Fig. S8 (ESI†) next to reaction intermediates that could potentially cause the observed absorption.



responsible for PLP binding, to alanine and evaluated the mutational effect on the reaction by NADH formation. The mutation K213A completely abolished enzymatic activity as NADH formation of K213A with 25 mM canavanine was similar to the background reaction of wild-type Can $\gamma$ L without addition of the substrate canavanine (Fig. S7, ESI $\dagger$ ). Additionally, we recorded UV/Vis spectra of an enzyme reaction since the PLP aldimine and quinonoid intermediates give rise to characteristic peaks.<sup>33,34</sup> Time-dependent increase of presumed aldimine and quinonoid peaks were observed for the wt enzyme whereas a K213A mutant of the enzyme did not show time-dependent changes in peak intensities, see Fig. S8 (ESI $\dagger$ ).

PLP-dependent enzymes are found in several different protein families and fold classes. In order to gain an insight into the structure and fold type of the enzyme, we submitted the primary sequence of Can $\gamma$ L to alpha-fold<sup>35–39</sup> and superimposed the resulting model (Fig. S9A, ESI $\dagger$ ) with the structure of methionine- $\gamma$ -lyase (M $\gamma$ L) from *Clostridium sporoges* (PDB code: 5DX5 chain A), as this enzyme represented the closest match in the RSCB protein data bank. The overall fold and structure of Can $\gamma$ L is very similar to M $\gamma$ L (Fig. S9B, ESI $\dagger$ ), especially in the PLP-binding domain, which assigns the Can $\gamma$ L to the type I-fold architecture of PLP-dependent enzymes. The Can $\gamma$ L PLP domain contains the typical seven stranded mainly parallel  $\beta$ -sheet with +–++++ directions of the  $\beta$ -strands, which are flanked by seven  $\alpha$ -helices on both sides of the  $\beta$ -sheet.<sup>28,40</sup> Also the PLP-binding lysine K213 aligned well with K212 of M $\gamma$ L (Fig. S9C, ESI $\dagger$ ). The superimposed model is added as a supplementary PYMOL file (ESI $\dagger$ ).

Finally, to validate the proposed role of canavanine- $\gamma$ -lyase in canavanine assimilation we created deletion strains *via* homologous recombination. CangL was deleted together with a second gene annotated as B3/4 domain-like protein (MBJ2347151.1) which we suspect to have an involvement in canavanine metabolism as it was also highly upregulated in our proteome data and its position in vicinity to the canavanine degradation operon. The deletion of Can $\gamma$ L rendered the strain unable to grow on canavanine as sole carbon source while its

growth on glucose was not affected (Fig. S10, ESI $\dagger$ ). A single deletion strain of the B3/4 domain already resulted in a strong reduction of growth on canavanine, a finding we have planned to address in future experiments. Taken together, our findings describe a novel enzyme acting efficiently and specifically on canavanine by a PLP-dependent  $\beta/\gamma$ -elimination/addition mechanism yielding the two products homoserine and hydroxyguanidine.

## Characterization of homoserine-dehydrogenase, aldehyde-dehydrogenases and ammonium-aspartate-lyase

Next, we tested whether the enzymatic activity of homoserine-dehydrogenase (HD), aldehyde-dehydrogenase 1 (AH, same operon as HD), aldehyde-dehydrogenase 2 (AC, same operon as Can $\gamma$ L) and ammonium-aspartate-lyase (AAL) would lead to the formation of fumarate since this set of enzymes should enable *P. canavaninivorans* to utilize homoserine *via* aspartate semialdehyde and aspartate yielding fumarate.<sup>41</sup> Indeed, when combining purified HD with either of the two aldehyde-dehydrogenases AH or AC and AAL the formation of fumarate *via* aspartate was observed (Fig. 3 and Fig. S11, ESI $\dagger$ ). Pairwise sequence alignment of AH and AC by EMBOSS Needle<sup>42</sup> showed 67.4% identity between the two oxidoreductases. Moreover, in the genomic context of *P. brassicacearum* 3Re2-7 and *P. fluorescens* F113, close relatives of *P. canavaninivorans*, the corresponding homolog of HD is found in the same genetic locus as Can $\gamma$ L and AC. Considering these findings, we suggest that the aldehyde-dehydrogenases AH and AC have redundant functions and that in *P. canavaninivorans* a gene duplication and reorganization event has split apart the complete canavanine degradation operon present in other *Pseudomonads* into two separate genomic loci.

We also observed that the reaction of HD was only dependent on the cofactor NAD $^+$  and that HD showed no activity

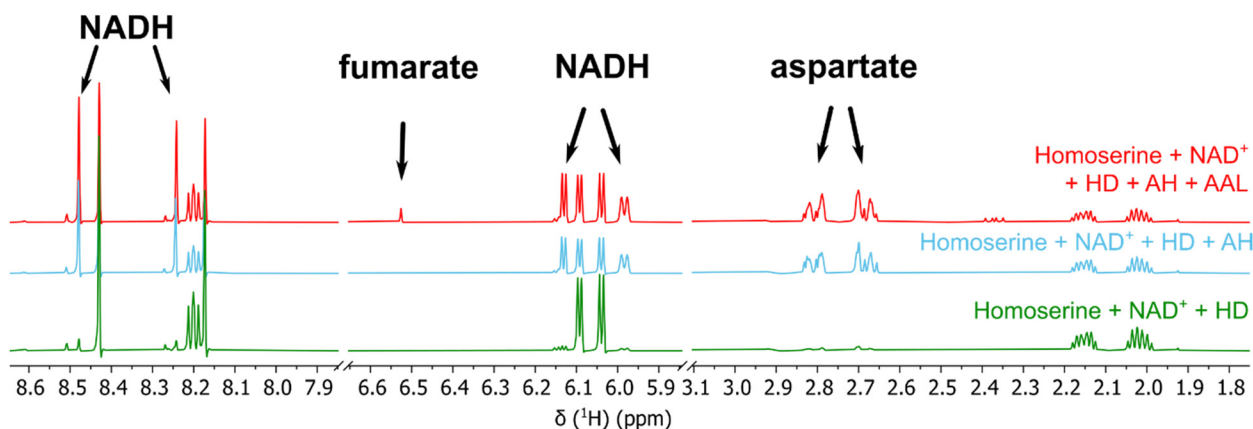


Fig. 3  $^1\text{H}$ -NMR of the reaction of homoserine to fumarate *via* homoserine dehydrogenase (HD), aldehyde dehydrogenases (AH) and ammonium-aspartate-lyase (AAL). The reaction with aldehyde dehydrogenase AC and the corresponding reference spectra are shown in Fig. S7 (ESI $\dagger$ ).



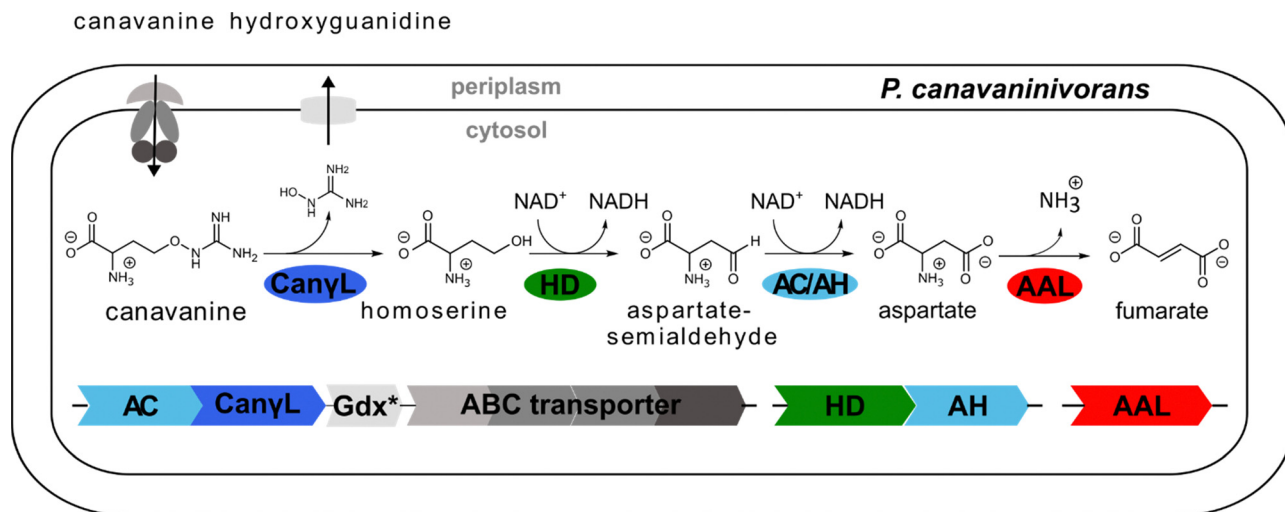


Fig. 4 Novel canavanine degradation pathway in *P. canavanivorans*. AC/AH: aldehyde dehydrogenase, Can $\gamma$ L: canavanine- $\gamma$ -lyase, Gdx: guanidine exporter, ABC: ATP-binding cassette type transporter, HD: homoserine dehydrogenase, AAL: ammonium-aspartate-lyase. Color indicates that the enzymatic function was experimentally validated in this work.

utilizing NADP<sup>+</sup> (Fig. S6B, ESI<sup>†</sup>). Comparing the sequence of HD to a recently discovered class of homoserine-dehydrogenases showed moderate sequence identity (59.6%).<sup>43</sup> Members of this new class favour the oxidation of homoserine rather than the reverse reaction taking place in the last step of the homoserine biosynthesis. The identified HD also displays the reported change in the NAD(P)<sup>+</sup> binding motif, explaining why HD rejects NADP<sup>+</sup> as co-substrate. In conclusion, we have reconstituted the whole pathway from canavanine to fumarate shown in Fig. 4 using purified enzymes.

#### Distribution of canvanine- $\gamma$ -lyase in prokaryotic genomes

In order to identify the occurrence of the canavanine degradation activity in other bacteria we performed a neighbor-joining phylogeny search based on canvanine- $\gamma$ -lyase (Can $\gamma$ L) using the ConSurf platform<sup>44</sup> and the BLOSUM62 algorithm<sup>45</sup> and visualized the result using iTOL v6 (Fig. 5A).<sup>46</sup> The novel Can $\gamma$ L enzyme (red) is clearly distant to other validated PLP-dependent enzymes like cystathionine- $\gamma$ -lyase or methionine- $\gamma$ -lyase (orange). The most similar homologs to the identified Can $\gamma$ L were found in other *Pseudomonads* (red) and in *Rhizobiales* (blue). Furthermore, when we compared the genomic contexts of the Can $\gamma$ L homologs, only in the genera *Pseudomonas* and *Rhizobium* the homologs clustered together with homologs of the additional enzymes of the pathway (HD, AC/AH, ABC transporters and Gdx) (Fig. 5B). In *Rhizobiales* genes coding for AAL and another enzyme (dapA) involved in aspartate semialdehyde metabolism are located at the same genetic locus. To test whether the Can $\gamma$ L homologs identified in *Rhizobiales* are indeed catalyzing the same reaction we over-expressed the respective enzyme of *Rhizobium leguminosarum* (WP\_012555980.1) in *E. coli* and investigated canavanine degradation of the purified enzyme as described before. The rhizobial Can $\gamma$ L (RCan $\gamma$ L) also led to the formation of homoserine (Fig. 6A) and hydroxyguanidine (Fig. 6B) from canavanine. With

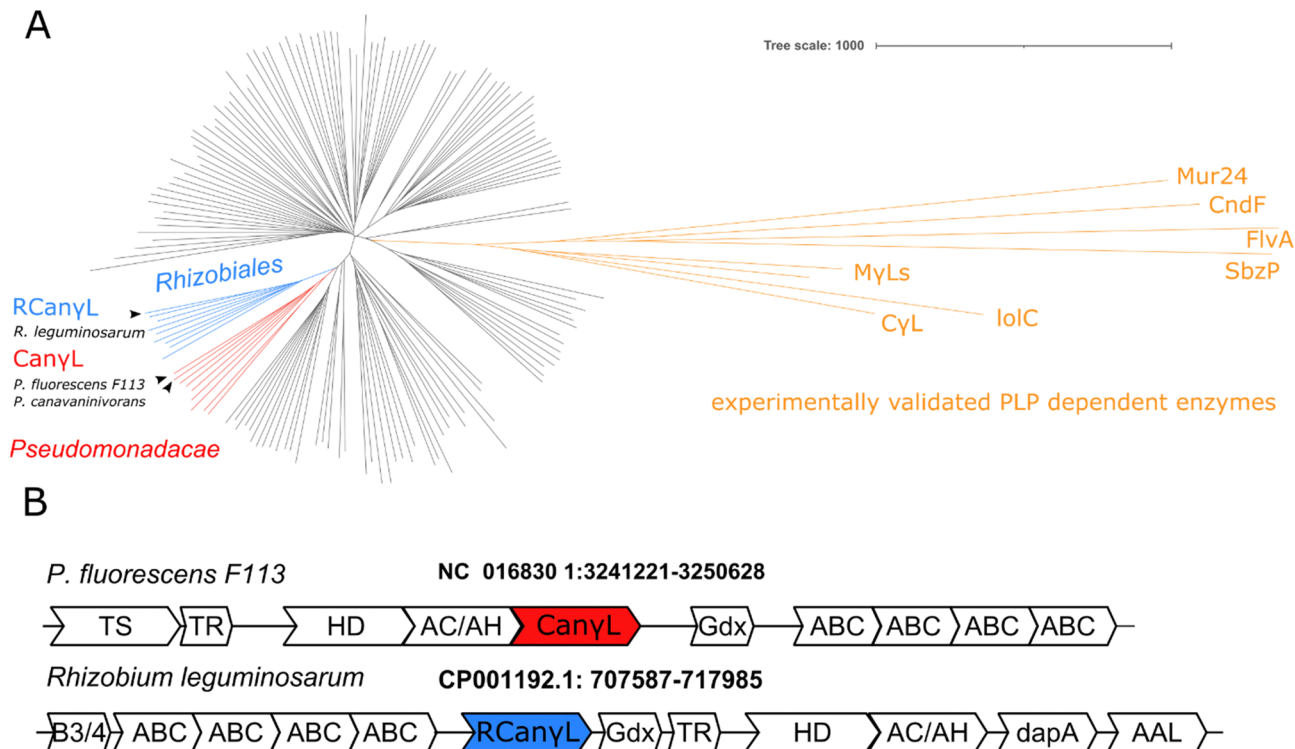
a  $K_M$  of  $390 \pm 13 \mu\text{M}$  and a  $k_{\text{cat}}$  of  $1.23 \pm 0.011 \text{ s}^{-1}$  RCan $\gamma$ L displayed kinetic parameters similar to Can $\gamma$ L. Both reactions fitted well to Michaelis-Menten-kinetics (Fig. 6C).

## Discussion

In this work we identified *Pseudomonas canavanivorans* sp. nov. that is able to utilize canavanine as sole carbon and nitrogen source. We demonstrated that a set of proteins upregulated upon growth on canavanine composes the first degradation pathway acting specifically on canavanine. The key enzyme, a canavanine- $\gamma$ -lyase, converts canavanine to homoserine by a PLP-dependent elimination of hydroxyguanidine resulting in a  $\beta,\gamma$ -unsaturated vinylglycine ketamine intermediate. This intermediate is characteristic for PLP-dependent enzymes of the cystathionine- $\gamma$ -lyase family although different reaction paths are possible from here.<sup>47</sup> For example, in methionine- $\gamma$ -lyases it leads to the formation of 2-oxobutanoate,<sup>29</sup> while in the cystathionine- $\gamma$ -lyase family-related enzymes CndF<sup>48</sup> and FlvA<sup>49</sup> vinylglycine ketimine reacts as a Michael acceptor with a C-nucleophile. Reactions with N-nucleophiles (IolC,<sup>50</sup> Mur24<sup>51</sup>) and S-nucleophiles (cystathionine-synthase,<sup>52</sup> O-acetylhomoserine-sulphydrylase<sup>53</sup>) have been reported as well. Recently, the enzyme SbzP from *Streptomyces* species was described that catalyses C $\gamma$  activation with reversed reactivity *via* an intermediary  $\beta,\gamma$ -unsaturated quinonoid attacking C4 of the pyridinium ring of  $\beta$ -NAD acting as electrophile.<sup>34</sup> In case of the canavanine- $\gamma$ -lyase described here, water is added, resulting in the formation of homoserine. Given the large number of so-far uncharacterized PLP-dependent enzymes with relatively high similarity (Fig. 5A) it seems likely that other so-far unrecognized reactions are catalyzed by members of this versatile enzyme class.

The canavanine degradation operon described here facilitates the oxidation of released homoserine to aspartate-semi-aldehyde by a member of a recently discovered new class





**Fig. 5** (A) Phylogenetic distribution of Can $\gamma$ L based on a homology search. Only for *Pseudomonadaceae* (red) and *Rhizobiales* (blue) (R)Can $\gamma$ L is found co-localized with genes shown in (B). Black clades represent homology-inferred representatives annotated as MyLs, C $\gamma$ Ls and other PLP-dependent enzymes. In orange experimentally validated PLP-dependent enzymes are shown, see discussion. (B) Representatives of the predominant genomic loci of the novel canavanine degradation pathway in *Pseudomonadaceae* and *Rhizobiales*. Gene annotations: TS: threonine synthase, TR: transcriptional regulator, HD: homoserine dehydrogenase, AC/AH: aldehyde dehydrogenase, AT: aminotransferase (Can $\gamma$ L), Gdx: guanidinium exporter, ABC: importer system, B3/4: potential tRNA editing domain, dapA: 4-hydroxy-tetrahydrodipicolinate synthase, AAL: ammonium-aspartate-lyase.

of homoserine-dehydrogenases,<sup>43</sup> followed by oxidation to aspartate by either one of the two aldehyde-dehydrogenases (AC/AH) found induced by canavanine. Then, an ammonium-aspartate-lyase converts aspartate to fumarate and ammonia. The ABC transporter found in the same operon as Can $\gamma$ L likely functions as a canavanine importer. Since periplasmic substrate-binding proteins are only found associated with importers in bacteria,<sup>54</sup> the ABC transporter facilitates the uptake of a substrate. In addition, the substrate-binding domain-containing protein of the upregulated transporter (MBJ2347157.1) is a homolog of an already described arginine-, lysine- and ornithine-binding domain-containing protein of *Salmonella enterica* (WP\_079987354.1, 43.5% identity).

The guanidine exporter Gdx also present in the operon likely functions as a hydroxyguanidine exporter since it has been demonstrated recently that Gdx not only efficiently exports guanidine but also amino- and methylguanidine.<sup>26</sup> We observed in the growth experiments with 10 mM canavanine as substrate that hydroxyguanidine is almost stoichiometrically exported with 8 mM measured in the supernatant, even when canavanine serves as the only nitrogen source. The canavanine cleavage product homoserine should be sufficient for supporting growth because the nitrogen from the alpha-amino group in homoserine satisfies the bacterial biomass need with a carbon : nitrogen ratio of 4:1.<sup>55,56</sup> This explains why the majority of

hydroxyguanidine is exported and not used by the bacterium for nitrogen assimilation as we have demonstrated recently for guanidine.<sup>24</sup>

The homology search of the canavanine- $\gamma$ -lyase revealed that the enzyme is also found in *Rhizobiales*. We confirmed that the Can $\gamma$ L homolog of *R. leguminosarum* is indeed degrading canavanine. We found Can $\gamma$ L co-occurring in the same genomic locus with the other enzymes of the described canavanine degradation pathway only in the genera of *Pseudomonas* and *Rhizobiales*. The pathway therefore most likely represents an adaptation to the vicinity of legumes as canavanine is thought to be restricted to these plants.<sup>6,7,57</sup> Adding to this picture, it has been shown that the legume *Glycyrrhiza uralensis* exudes canavanine in order to support symbiotic events with rhizobia.<sup>8</sup> The authors of the study showed that canavanine induces the expression of the canavanine exporter MsiA in *Mesorhizobium tianshanense*, which confers canavanine resistance. *P. canavaninivorans* also contains a homolog of MsiA (MBJ2350238.1, 40.0% identity, 58.0% similarity), suggesting that certain bacteria might have at least two ways for coping with canavanine: by degrading and/or exporting it. This finding also emphasizes the association of *P. canavaninivorans* with the canavanine-rich legume rhizosphere.

Recently, studying hairy vetch (*Vicia villosa*) it was shown that canavanine is exuded by the roots during early plant



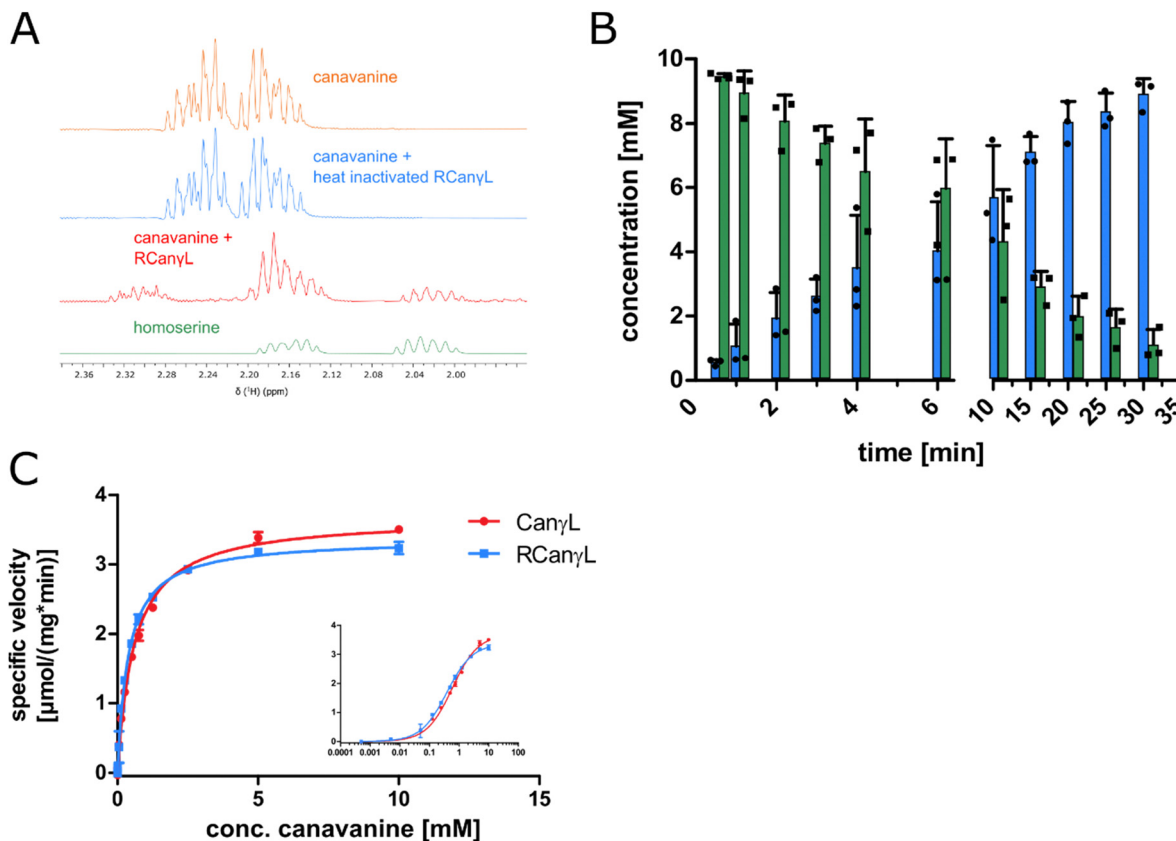


Fig. 6 (A)  $^1\text{H}$ -proton NMR spectra of a reaction of canavanine to homoserine catalyzed by purified rhizobial canavanine- $\gamma$ -lyase (RCan $\gamma$ L, WP\_012555980.1), representative peaks shown, complete spectra can be found in item 2 (ESI†). (B) MS concentration measurements of canavanine (green) and hydroxyguanidine (blue) in a reaction with purified RCan $\gamma$ L,  $n = 3$ , error bars = SD, each data point represents the mean of a technical triplicate. (C) Comparison of the kinetics of Can $\gamma$ L and RCan $\gamma$ L. The inset shows the data with a log<sub>10</sub> scale of substrate concentration,  $n = 3$ , error bars = SD.

development impacting the composition and metabolic activity of the microbial soil community.<sup>9</sup> Furthermore, it was demonstrated for *Sinorhizobium meliloti* that canavanine shuts down the production of the exopolysaccharide EPSII without affecting the growth of the bacterium,<sup>58</sup> which has been reported to be a crucial step in the process of nodule invasion.<sup>59</sup> Hence, canavanine exuded by legume plants could support nodulation and infection during root development. Canavanine could thereby act both as a signaling molecule for the free-living bacterium to onset its symbiosis with the legume plant as well as serve as a nutrient for both symbiotic and non-symbiotic bacteria in the rhizosphere. *S. meliloti* also contains a homolog of Can $\gamma$ L (WP\_100674444.1, 71.0% identity) in the genetic context of the utilization pathway presented in this work (see operon structure *R. leguminosarum* Fig. 5B).

The finding that the canavanine- $\gamma$ -lyase deletion strain of *P. canavaninivorans* was unable to grow on canavanine represents additional evidence that the genes described in this work indeed compose a canavanine degradation operon. In addition, the poor growth of the B3/4 domain-protein deletion strain raises further questions regarding the function of this protein and its connection to canavanine metabolism. Interestingly, B3/4 domain-containing genes are often found regulated by

guanidine riboswitches.<sup>20,21</sup> Their homology to domains annotated as aminoacyl-tRNA synthetase editing domains suggest a role in mediating canavanine toxicity originating from misincorporation into proteins.

Even more speculative, canavanine could also play a potential role in establishing the metabolic relationship of the plant and its Rhizobia in analogy to a recently published co-catabolism of arginine and succinate in symbiotic nitrogen fixation.<sup>60</sup> The authors found that plants supply not only succinate but also arginine to the nitrogen-fixing bacteria which finally benefits the plant with higher nitrogen yields and the bacteroid with facilitated respiration under the highly acidic conditions present within the symbiosome. Canavanine degradation could be used by the bacterium in a similar fashion to arginine, as the processing of the carbon skeleton would also generate reductive power in form of NADH. Also, recent studies indicate that co-inoculation of Rhizobia with plant growth-promoting rhizobacteria like certain pseudomonads results in larger nitrogen fixation and better growth of the respective legume host under several stress conditions.<sup>61–63</sup> Additionally, it was just currently shown for the model plant *Arabidopsis thaliana*, that commensal *Pseudomonas* can protect the plant against very closely related pathogenic *Pseudomonads*





and that the host environment indeed affects the microbe-microbe interactions.<sup>64</sup> Taken together, modulating the microbiome by offering canavanine and thereby attracting Rhizobia and other plant growth-promoting bacteria capable of utilizing canavanine may foster symbiotic events and help shaping a favorable rhizosphere.

## Conclusions

The arginine-mimicking legume metabolite canavanine can be degraded and utilized as sole carbon and nitrogen source by rhizosphere-associated bacteria. The first specific canavanine degradation pathway is comprised of canavanine- $\gamma$ -lyase as key activity, yielding homoserine and hydroxyguanidine. Further activities are responsible for channeling homoserine into the TCA, importing canavanine and exporting hydroxyguanidine. The finding of a specific canavanine degradation pathway should contribute to a better understanding of the interactions between legumes and associated bacteria, an important task given the role legumes play in global food security.

## Experimental procedure

The experimental procedure can be found in the supplementary material of this manuscript.

## Author contributions

FH and JSH conceived the project and planned all experiments. FH and HB carried out the *P. canavaninivorans* enrichment, its initial characterization, enzyme purifications and the enzymatic assays. FH and MS conducted and evaluated the NMR analyses of the enzyme reactions. FH measured UV/Vis spectra and performed the homology and modelling calculations. The manuscript was written by FH and JSH with contributions from all authors. All authors have given approval to the final version of the manuscript.

## Funding sources

European Research Council – ERC CoG 681777.

## Conflicts of interest

The authors declare no conflict of interest.

## Acknowledgements

JSH acknowledges funding from the ERC CoG “RiboDisc”. We thank Anke Friemel from the University of Konstanz NMR facility and Dmitry Galetsky and Astrid Joachimi for technical assistance and Lena Barra for helpful discussions. We kindly thank Prof. Herbert Schweizer (University of Florida, USA) for providing the pEX18Gm suicide vector.

## References

- 1 M. Fichtner, K. Voigt and S. Schuster, The tip and hidden part of the iceberg: Proteinogenic and non-proteinogenic aliphatic amino acids, *Biochim. Biophys. Acta, Gen. Subj.*, 2017, **1861**, 3258–3269.
- 2 M. Kitagawa and T. Tomiyama, A new amino-compound in the jack bean and a corresponding new ferment.(I)\*, *J. Biochem.*, 1929, **11**, 265–271.
- 3 M. Kitagawa and H. Yamada, Studies on a di-amino acid, canavanin (II), *J. Biochem.*, 1932, **16**, 339–350.
- 4 W. R. Fearon and E. A. Bell, Canavanine: detection and occurrence in *Colutea arborescens*, *Biochem. J.*, 1955, **59**, 221–224.
- 5 G. A. Rosenthal, The biological effects and mode of action of L-canavanine, a structural analogue of L-arginine, *Q. Rev. Biol.*, 1977, **52**, 155–178.
- 6 G. A. Rosenthal, Nitrogen allocation for L-Canavanine synthesis and its relationship to chemical defense of the seed, *Biochem. Syst. Ecol.*, 1977, **5**, 219–220.
- 7 G. A. Rosenthal, Metabolism of l-Canavanine and l-Canaline in Leguminous Plants, *Plant Physiol.*, 1990, **94**, 1–3.
- 8 T. Cai, W. Cai, J. Zhang, H. Zheng, A. M. Tsou, L. Xiao, Z. Zhong and J. Zhu, Host legume-exuded antimetabolites optimize the symbiotic rhizosphere, *Mol. Microbiol.*, 2009, **73**, 507–517.
- 9 H. Mardani-Korrani, M. Nakayasu, S. Yamazaki, Y. Aoki, R. Kaida, T. Motobayashi, M. Kobayashi, N. Ohkama-Ohtsu, Y. Oikawa, A. Sugiyama and Y. Fujii, L-Canavanine, a Root Exudate From Hairy Vetch (*Vicia villosa*) Drastically Affecting the Soil Microbial Community and Metabolite Pathways, *Front. Microbiol.*, 2021, **12**, 701796.
- 10 A. J. Cooper, Oxime formation between  $\alpha$ -keto acids and l-canaline, *Arch. Biochem. Biophys.*, 1984, **233**, 603–610.
- 11 C. Melangeli, G. A. Rosenthal and D. L. Dalman, The biochemical basis for L-canavanine tolerance by the tobacco budworm *Heliothis virescens* (Noctuidae), *Proc. Natl. Acad. Sci. U. S. A.*, 1997, **94**, 2255–2260.
- 12 G. A. Rosenthal and D. L. Dahlman, L-Canavanine and protein synthesis in the tobacco hornworm *Manduca sexta*, *Proc. Natl. Acad. Sci. U. S. A.*, 1986, **83**, 14–18.
- 13 C. Mitri, L. Soustelle, B. Framery, J. Bockaert, M.-L. Parmentier and Y. Grau, Plant insecticide L-canavanine repels *Drosophila* via the insect orphan GPCR DmX, *PLoS Biol.*, 2009, **7**, e1000147.
- 14 M. A. Berge, G. A. Rosenthal and D. L. Dahlman, Tobacco budworm, *Heliothis virescens* [Noctuidae] resistance to l-canavanine, a protective allelochemical, *Pestic. Biochem. Physiol.*, 1986, **25**, 319–326.
- 15 H. Kihara, J. M. Prescott and E. E. Snell, The bacterial cleavage of canavanine to homoserine and guanidine, *The, J. Biol. Chem.*, 1955, **217**, 497–503.
- 16 G. D. Kalyankar, M. Ikawa and E. E. Snell, The enzymatic cleavage of canavanine to homoserine and hydroxyguanidine, *J. Biol. Chem.*, 1958, **233**, 1175–1178.
- 17 J. W. Nelson, R. M. Atilho, M. E. Sherlock, R. B. Stockbridge and R. R. Breaker, Metabolism of Free Guanidine in



- Bacteria Is Regulated by a Widespread Riboswitch Class, *Mol. Cell*, 2017, **65**, 220–230.
- 18 M. E. Sherlock and R. R. Breaker, Biochemical Validation of a Third Guanidine Riboswitch Class in Bacteria, *Biochemistry*, 2017, **56**, 359–363.
- 19 M. E. Sherlock, S. N. Malkowski and R. R. Breaker, Biochemical Validation of a Second Guanidine Riboswitch Class in Bacteria, *Biochemistry*, 2017, **56**, 352–358.
- 20 F. Lenkeit, I. Eckert, J. S. Hartig and Z. Weinberg, Discovery and characterization of a fourth class of guanidine riboswitches, *Nucleic Acids Res.*, 2020, **48**, 12889–12899.
- 21 H. Salvail, A. Balaji, D. Yu, A. Roth and R. R. Breaker, Biochemical Validation of a Fourth Guanidine Riboswitch Class in Bacteria, *Biochemistry*, 2020, **59**, 4654–4662.
- 22 D. Funck, M. Sinn, J. R. Fleming, M. Stanoppi, J. Dietrich, R. López-Igual, O. Mayans and J. S. Hartig, Discovery of a Ni<sup>2+</sup>-dependent guanidine hydrolase in bacteria, *Nature*, 2022, **603**, 515–521.
- 23 N. O. Schneider, L. J. Tassoulas, D. Zeng, A. J. Laseke, N. J. Reiter, L. P. Wackett and M. S. Maurice, Solving the Conundrum: Widespread Proteins Annotated for Urea Metabolism in Bacteria Are Carboxyguanidine Deiminases Mediating Nitrogen Assimilation from Guanidine, *Biochemistry*, 2020, **59**, 3258–3270.
- 24 M. Sinn, F. Hauth, F. Lenkeit, Z. Weinberg and J. S. Hartig, Widespread bacterial utilization of guanidine as nitrogen source, *Mol. Microbiol.*, 2021, **116**(1), 200–210.
- 25 F. Hauth, H. Buck and J. S. Hartig, *Pseudomonas canavanivorans* sp. nov., isolated from bean rhizosphere, *Int. J. Syst. Evol. Microbiol.*, 2022, **72**(1), DOI: [10.1099/ijsem.0.005203](https://doi.org/10.1099/ijsem.0.005203).
- 26 A. A. Kermani, C. B. Macdonald, R. Gundepudi and R. B. Stockbridge, Guanidinium export is the primal function of SMR family transporters, *Proc. Natl. Acad. Sci. U. S. A.*, 2018, **115**, 3060–3065.
- 27 J. Liang, Q. Han, Y. Tan, H. Ding and J. Li, Current Advances on Structure-Function Relationships of Pyridoxal 5'-Phosphate-Dependent Enzymes, *Front. Mol. Biosci.*, 2019, **6**, 4.
- 28 S. Revtovich, N. Anufrieva, E. Morozova, V. Kulikova, A. Nikulin and T. Demidkina, Structure of methionine  $\gamma$ -lyase from *Clostridium sporogenes*, *Acta Crystallogr., Sect. F: Struct. Biol. Commun.*, 2016, **72**, 65–71.
- 29 D. Sato, T. Shiba, T. Karaki, W. Yamagata, T. Nozaki, T. Nakazawa and S. Harada, X-Ray snapshots of a pyridoxal enzyme: a catalytic mechanism involving concerted 1,5-hydrogen sigmatropy in methionine  $\gamma$ -lyase, *Sci. Rep.*, 2017, **7**, 4874.
- 30 D. Sato and T. Nozaki, Methionine gamma-lyase: the unique reaction mechanism, physiological roles, and therapeutic applications against infectious diseases and cancers, *IUBMB Life*, 2009, **61**, 1019–1028.
- 31 N. G. Faleev, K. V. Alferov, M. A. Tsvetikova, E. A. Morozova, S. V. Revtovich, E. N. Khurs, M. M. Vorob'ev, R. S. Phillips, T. V. Demidkina and R. M. Khomutov, Methionine gamma-lyase: mechanistic deductions from the kinetic pH-effects. The role of the ionic state of a substrate in the enzymatic activity, *Biochim. Biophys. Acta*, 2009, **1794**, 1414–1420.
- 32 J. C. Hafkenschied and B. E. Kohler, Effects of temperature on measurement of aspartate aminotransferase and alanine aminotransferase in commercial control sera, *Clin. Chem.*, 1986, **32**, 184–185.
- 33 B. G. Caulkins, B. Bastin, C. Yang, T. J. Neubauer, R. P. Young, E. Hilario, Y. M. Huang, C. A. Chang, L. Fan, M. F. Dunn, M. J. Marsella and L. J. Mueller, Protonation states of the tryptophan synthase internal aldimine active site from solid-state NMR spectroscopy: direct observation of the protonated Schiff base linkage to pyridoxal-5'-phosphate, *J. Am. Chem. Soc.*, 2014, **136**, 12824–12827.
- 34 L. Barra, T. Awakawa, K. Shirai, Z. Hu, G. Bashiri and I. Abe,  $\beta$ -NAD as a building block in natural product biosynthesis, *Nature*, 2021, **600**, 754–758.
- 35 M. Mirdita, K. Schütze, Y. Moriwaki, L. Heo, S. Ovchinnikov and M. Steinegger, ColabFold: Making Protein folding accessible to all, *Nat. Methods*, 2022, **19**, 679–682.
- 36 M. Mirdita, M. Steinegger and J. Söding, MMseqs2 desktop and local web server app for fast, interactive sequence searches, *Bioinformatics*, 2019, **35**, 2856–2858.
- 37 M. Mirdita, L. von den Driesch, C. Galiez, M. J. Martin, J. Söding and M. Steinegger, Uniclust databases of clustered and deeply annotated protein sequences and alignments, *Nucleic Acids Res.*, 2017, **45**, D170–D176.
- 38 A. L. Mitchell, A. Almeida, M. Beracochea, M. Boland, J. Burgin, G. Cochrane, M. R. Crusoe, V. Kale, S. C. Potter, L. J. Richardson, E. Sakharova, M. Scheremetjew, A. Korobeynikov, A. Shlemov, O. Kunyavskaya, A. Lapidus and R. D. Finn, MGnify: the microbiome analysis resource in 2020, *Nucleic Acids Res.*, 2020, **48**(D1), D570–D578.
- 39 J. Jumper, R. Evans, A. Pritzel, T. Green, M. Figurnov, O. Ronneberger, K. Tunyasuvunakool, R. Bates, A. Zidek, A. Potapenko, A. Bridgland, C. Meyer, S. A. A. Kohl, A. J. Ballard, A. Cowie, B. Romera-Paredes, S. Nikolov, R. Jain, J. Adler, T. Back, S. Petersen, D. Reiman, E. Clancy, M. Zielinski, M. Steinegger, M. Pacholska, T. Berghammer, S. Bodenstein, D. Silver, O. Vinyals, A. W. Senior, K. Kavukcuoglu, P. Kohli and D. Hassabis, Highly accurate protein structure prediction with AlphaFold, *Nature*, 2021, **596**, 583–589.
- 40 J. N. Jansonius, Structure, evolution and action of vitamin B6-dependent enzymes, *Curr. Opin. Struct. Biol.*, 1998, **8**, 759–769.
- 41 G. Gottschalk, *Bacterial Metabolism*, Springer New York, New York, NY, 1986.
- 42 P. Rice, I. Longden and A. Bleasby, EMBOSS: The European Molecular Biology Open Software Suite, *Trends Genet.*, 2000, **16**, 276–277.
- 43 X. Liang, H. Deng, Y. Bai, T.-P. Fan, X. Zheng and Y. Cai, Characterization of a Novel Type Homoserine Dehydrogenase Only with High Oxidation Activity from *Arthrobacter nicotinovorans*, *bioRxiv*, 2021, DOI: [10.1101/2021.02.09.430557](https://doi.org/10.1101/2021.02.09.430557).



- 44 M. Landau, I. Mayrose, Y. Rosenberg, F. Glaser, E. Martz, T. Pupko and N. Ben-Tal, ConSurf 2005: the projection of evolutionary conservation scores of residues on protein structures, *Nucleic Acids Res.*, 2005, **33**, W299–W302.
- 45 S. Henikoff and J. G. Henikoff, Amino acid substitution matrices from protein blocks, *Proc. Natl. Acad. Sci. U. S. A.*, 1992, **89**, 10915–10919.
- 46 I. Letunic and P. Bork, Interactive Tree Of Life (iTOL) v5: an online tool for phylogenetic tree display and annotation, *Nucleic Acids Res.*, 2021, **49**, W293–W296.
- 47 P. Brzović, E. L. Holbrook, R. C. Greene and M. F. Dunn, Reaction mechanism of *Escherichia coli* cystathionine gamma-synthase: direct evidence for a pyridoxamine derivative of vinylglyoxylate as a key intermediate in pyridoxal phosphate dependent gamma-elimination and gamma-replacement reactions, *Biochemistry*, 1990, **29**, 442–451.
- 48 M. Chen, C.-T. Liu and Y. Tang, Discovery and Biocatalytic Application of a PLP-Dependent Amino Acid  $\gamma$ -Substitution Enzyme That Catalyzes C-C Bond Formation, *J. Am. Chem. Soc.*, 2020, **142**, 10506–10515.
- 49 D. A. Yee, T. B. Kakule, W. Cheng, M. Chen, C. T. Y. Chong, Y. Hai, L. F. Hang, Y.-S. Hung, N. Liu, M. Ohashi, I. C. Okorafor, Y. Song, M. Tang, Z. Zhang and Y. Tang, Genome Mining of Alkaloidal Terpenoids from a Hybrid Terpene and Nonribosomal Peptide Biosynthetic Pathway, *J. Am. Chem. Soc.*, 2020, **142**, 710–714.
- 50 J. R. Faulkner, S. R. Hussaini, J. D. Blankenship, S. Pal, B. M. Branan, R. B. Grossman and C. L. Schardl, On the sequence of bond formation in loline alkaloid biosynthesis, *ChemBioChem*, 2006, **7**, 1078–1088.
- 51 Z. Cui, J. Overbay, X. Wang, X. Liu, Y. Zhang, M. Bhardwaj, A. Lemke, D. Wiegmann, G. Niro, J. S. Thorson, C. Ducho and S. G. van Lanen, Pyridoxal-5'-phosphate-dependent alkyl transfer in nucleoside antibiotic biosynthesis, *Nat. Chem. Biol.*, 2020, **16**, 904–911.
- 52 E. Borsok and R. H. Abeles, Mechanism of action of cystathionine synthase, *Arch. Biochem. Biophys.*, 1982, **213**, 695–707.
- 53 Y. Murooka, K. Kakihara, T. Miwa, K. Seto and T. Harada, O-alkylhomoserine synthesis catalyzed by O-acetylhomoserine sulfhydrylase in microorganisms, *J. Bacteriol.*, 1977, **130**, 62–73.
- 54 R. P.-A. Berntsson, S. H. J. Smits, L. Schmitt, D.-J. Slotboom and B. Poolman, A structural classification of substrate-binding proteins, *FEBS Lett.*, 2010, **584**, 2606–2617.
- 55 R. Milo, P. Jorgensen, U. Moran, G. Weber and M. Springer, BioNumbers – the database of key numbers in molecular and cell biology, *Nucleic Acids Res.*, 2010, **38**, D750–3.
- 56 M. Heldal, S. Norland, K. M. Fagerbakke, F. Thingstad and G. Bratbak, The elemental composition of bacteria: A signature of growth conditions?, *Mar. Pollut. Bull.*, 1996, **33**, 3–9.
- 57 G. A. Rosenthal, L-Canavanine: a higher plant insecticidal allelochemical, *Amino Acids*, 2001, **21**, 319–330.
- 58 N. D. Keshavan, P. K. Chowdhary, D. C. Haines and J. E. González, L-Canavanine made by *Medicago sativa* interferes with quorum sensing in *Sinorhizobium meliloti*, *J. Bacteriol.*, 2005, **187**, 8427–8436.
- 59 K. E. Mendrygal and J. E. González, Environmental regulation of exopolysaccharide production in *Sinorhizobium meliloti*, *J. Bacteriol.*, 2000, **182**, 599–606.
- 60 C. E. Flores-Tinoco, F. Tschan, T. Fuhrer, C. Margot, U. Sauer, M. Christen and B. Christen, Co-catabolism of arginine and succinate drives symbiotic nitrogen fixation, *Mol. Syst. Biol.*, 2020, **16**, e9419.
- 61 O. Farssi, R. Saih, A. El Moukhtari, A. Oubenali, M. Mouradi, M. Lazali, C. Ghoulam, A. Bouizgaren, H. Berrougui and M. Farissi, Synergistic effect of *Pseudomonas alkylphenolica* PF9 and *Sinorhizobium meliloti* Rm41 on Moroccan alfalfa population grown under limited phosphorus availability, *Saudi J. Biol. Sci.*, 2021, **28**, 3870–3879.
- 62 H. Korir, N. W. Mungai, M. Thuita, Y. Hamba and C. Masso, Co-inoculation Effect of Rhizobia and Plant Growth Promoting Rhizobacteria on Common Bean Growth in a Low Phosphorus Soil, *Front. Plant Sci.*, 2017, **8**, 141.
- 63 D. T. Matse, C.-H. Huang, Y.-M. Huang and M.-Y. Yen, Effects of coinoculation of Rhizobium with plant growth promoting rhizobacteria on the nitrogen fixation and nutrient uptake of *Trifolium repens* in low phosphorus soil, *J. Plant Nutr.*, 2020, **43**, 739–752.
- 64 O. Shalev, T. L. Karasov, D. S. Lundberg, H. Ashkenazy, P. Pramoj Na Ayutthaya and D. Weigel, Commensal *Pseudomonas* strains facilitate protective response against pathogens in the host plant, *Nat. Ecol. Evol.*, 2022, **6**, 383–396.

