



Diving into divergence: Differentiation in swimming performances, physiology and gene expression between locally-adapted sympatric cichlid fishes

Francesca Raffini^{1,2,3} | Ralf F. Schneider^{1,2} | Paolo Franchini¹ |
Andreas F. Kautt¹ | Axel Meyer^{1,2}

¹Lehrstuhl für Zoologie und Evolutionsbiologie, Department of Biology, University of Konstanz, Konstanz, Germany

²International Max Planck Research School (IMPRS) for Organismal Biology, Max-Planck-Institut für Ornithologie, Radolfzell, Germany

³Max Planck Institute for Ornithology, Radolfzell, Germany

Correspondence

Axel Meyer, Lehrstuhl für Zoologie und Evolutionsbiologie, Department of Biology, University of Konstanz, Konstanz, Germany.
Email: axel.meyer@uni-konstanz.de

Present address

Francesca Raffini, Department of Animal and Plant Sciences, The University of Sheffield, Sheffield, UK

Ralf F. Schneider, Department of Marine Ecology, GEOMAR, Kiel, Germany

Andreas F. Kautt, Department of Organismic and Evolutionary Biology, Harvard University, Cambridge, MA, USA

Funding information

Deutsche Forschungsgemeinschaft, Grant/Award Number: ME 2848-1-1, ME 1725/20-1 and FR 3399/1-1; International Max Planck Research School (IMPRS) for Organismal Biology; Zukunftscolleg of the University of Konstanz; European Research Council, Grant/Award Number: 293700

Abstract

Sympatric speciation occurs without geographical barriers and is thought to often be driven by ecological specialization of individuals that eventually diverge genetically and phenotypically. Distinct morphologies between sympatric populations occupying different niches have been interpreted as such differentiating adaptive phenotypes, yet differences in performance and thus likely adaptiveness between them were rarely tested. Here, we investigated if divergent body shapes of two sympatric crater lake cichlid species from Nicaragua, one being a shore-associated (benthic) species while the other prefers the open water zones (limnetic), affect cruising (U_{crit}) and sprinting (U_{sprint}) swimming abilities – performances particularly relevant to their respective lifestyles. Furthermore, we investigated species differences in oxygen consumption (MO_2) across different swimming speeds and compare gene expression in gills and white muscle at rest and during exercise. We found a superior cruising ability in the limnetic *Amphilophus zaliosus* compared to the benthic *Amphilophus astorquii*, while sprinting was not different, suggesting that their distinct morphologies affect swimming performance. Increased cruising swimming ability in *A. zaliosus* was linked to a higher oxygen demand during activity (but not rest), indicating different metabolic rates during exercise – a hypothesis supported by coinciding gene expression patterns of gill transcriptomes. We identified differentially expressed genes linked to swimming physiology, regulation of swimming behaviour and oxygen intake. A combination of physiological and morphological differences may thus underlie adaptations to these species' distinct niches. This complex ecological specialization probably resulted in morphological and physiological trade-offs that contributed to the rapid establishment and maintenance of divergence with gene flow.

KEYWORDS

adaptive divergence, cichlid, gene expression, physiology, swimming performance, sympatry

Raffini and Schneider contributed equally to this work.

This is an open access article under the terms of the Creative Commons Attribution License, which permits use, distribution and reproduction in any medium, provided the original work is properly cited.

© 2019 The Authors. *Molecular Ecology* published by John Wiley & Sons Ltd

Konstanzer -System (KOPS)
URL: <http://nbn-resolving.org/urn:nbn:de:bsz:352-2-hzlnpqa1j0b3>

1 | INTRODUCTION

Ecologically-based divergent (or disruptive) selection plays a primary role in driving population differentiation, particularly in the absence of geographical barriers (i.e., sympatric speciation; Coyne, 2007; Fitzpatrick, Fordyce, & Gavrilets, 2008; Foote, 2018) and can promote speciation if conditions are right (Bolnick & Fitzpatrick, 2007; Gavrilets, 2004; Smadja & Butlin, 2011). Some of the well documented cases of population divergence due to ecologically-based divergent selection include *Rhagoletis* fruit flies (Filchak, Roethele, & Feder, 2000), *Timema* walking sticks (Nosil, 2007), *Littorina* snails (Rolán-Alvarez, 2007), *Howea* palm trees (Savolainen et al., 2006) and several fishes (e.g., Doenz, Bittner, Vonlanthen, Wagner, & Seehausen, 2018; Kautt, Machado-Schiaffino, Torres-Dowdall, & Meyer, 2016; reviewed in Bird, Fernandez-Silva, Skillings, & Toonen, 2012; Bolnick & Fitzpatrick, 2007; Richards, Servedio, & Martin, 2019). Among fishes, divergence along the benthic-limnetic axis (i.e., shore associated vs. open water habitats) has occurred numerous times independently and often involves characteristic differences in morphology (e.g., elongated vs. deep body shapes), which are thought to reflect the dissimilar biotic and abiotic environmental conditions of their habitats and hence different selective pressures (Bay et al., 2017; Elmer et al., 2014; Langerhans & Reznick, 2010; Meyer, 1990; Schluter, 1993; Schluter & McPhail, 1992; Webb, 1984a).

Some of the best studied examples of adaptive divergence linked to ecological specialization come from cichlid fishes, a group of freshwater fish renowned for their remarkable diversity, rapid adaptive radiations and explosive rates of speciation (e.g., Henning & Meyer, 2014; Salzburger, 2009; Seehausen, 2006). Among cichlid fishes, the Nicaraguan Midas cichlid species complex (*Amphilophus* spp.) with its small-scale crater lakes radiations offers a suitable model to explore population divergence due to adaptation to different ecological niches in small, contained geographic settings without geographic barriers (e.g., Barluenga, Stölting, Salzburger, Muschick, & Meyer, 2006; Coyne, 2007; Kautt, Machado-Schiaffino, & Meyer, 2018; Meyer, 1990): Midas cichlids from the much larger, but shallow and turbid Lake Nicaragua and Lake Managua repeatedly colonized a nearby chain of small, deep and clearer crater lakes within the last few thousand years. In several of these crater lakes, the colonizers adaptively diversified extremely rapidly in sympatry, resulting in several endemic, ecologically specialized species (e.g., Barluenga et al., 2006; Kautt et al., 2018; Meyer, 1990). In Lake Apoyo, the oldest of the Nicaraguan crater lakes (approximately 24,000 years, Kutterolf, Freundt, Perez, Wehrmann, & Schmincke, 2007), the endemic species *A. astorquii* (one of the five benthic species in this lake) and *A. zaliosus* (the single limnetic species) emerged within a surprisingly short amount of time (Figure 1a,b; Barlow & Munsey, 1976; Barluenga et al., 2006; Kautt, Machado-Schiaffino, & Meyer, 2016; Stauffer, McCrary, & Black, 2008). The body morphologies of these fishes are thought to have adaptively differentiated from the ancestral rather benthic form into a deep-bodied benthic (*A. astorquii*) and an elongated limnetic shape (*A. zaliosus*; e.g., Elmer, Kusche, Lehtonen, & Meyer, 2010; Meyer, 1990; Recknagel, Elmer, &

Meyer, 2014). *Amphilophus astorquii* and *A. zaliosus* also differ in their trophic ecology: stable isotopes, scuba observations, and gut and stomach content analyses revealed that *A. zaliosus* mainly feed in the limnetic habitat on prey of a higher trophic level (insects, larvae, fish) compared to *A. astorquii*, which is a benthic omnivore that relies on a higher proportion of plants, algae and molluscs (Figure 1; Barluenga et al., 2006; Elmer et al., 2014; Franchini, Fruciano, Frickey, Jones, & Meyer, 2014). These two species also host divergent gut bacterial communities (Franchini, Fruciano, Spreitzer, et al., 2014) and mate assortatively (Barlow & Munsey, 1976; Baylis, 1976; Stauffer et al., 2008). These features make Neotropical Midas cichlid fishes in Crater Lake Apoyo an ideal study system to examine the processes leading to ecological specialization and adaptive divergence in sympatry.

Differences in several of these Midas cichlid species' traits are likely adaptations to their divergent ecological niches (e.g., Barlow & Munsey, 1976; Barluenga et al., 2006; Baylis, 1976; Franchini, Fruciano, Spreitzer, et al., 2014; Fruciano et al., 2016; Stauffer et al., 2008). Recent studies suggested that divergent body shapes might reflect differences in swimming performances such as cruising swimming and sprinting (acceleration) performance that are particularly important in the limnetic and benthic habitats, respectively, as was shown previously for other fishes (Barluenga & Meyer, 2010; Franchini, Fruciano, Spreitzer, et al., 2014; Meyer, 1989, Appendix S1 references, Table 1). Due to its functional importance and significant impact on the daily energy budget, swimming performance is tightly linked to fitness and can play a crucial role in the processes that facilitate sympatric adaptive divergence (reviewed in Higham et al., 2016; further references in Appendix S1 references). In fact, many traits (e.g., fish morphology and physiology) affecting swimming performance underlie developmental constraints and functional trade-offs that allow phenotypes to evolve only within a restricted space along adaptive axes (e.g., either maximizing cruising or sprinting performance, Table 1), promoting rapid adaptive phenotypic divergence (e.g., Langerhans, 2009; Langerhans, Gifford, & Joseph, 2007; Rouleau, Glémet, & Magnan, 2010; Webb, 1984a; further references in Appendix S1 references).

Studies aiming to explore the genotype-phenotype-performance-fitness landscape of incipient ecological speciation can benefit from being conducted in an integrated comparative and functional framework. These can help to identify the ecological, functional and developmental interactions and trade-offs possibly affecting evolutionary trajectories during divergence. Mechanistic approaches can offer valuable insights about the evolutionary dynamics of natural populations differentiation and adaptation across the levels of biological organization (Arnold, 1983; Dalziel, Rogers, & Schulte, 2009; Dean & Thornton, 2007; Higham et al., 2016; Masel & Promislow, 2016). In Nicaraguan cichlid fishes, the functional relationship between body shape and swimming performance has not been explored so far, that is, if and how divergent external morphology affects performance and thus probably fitness in different habitats. Here, we aimed to experimentally test whether the benthic *A. astorquii* and limnetic *A. zaliosus* species

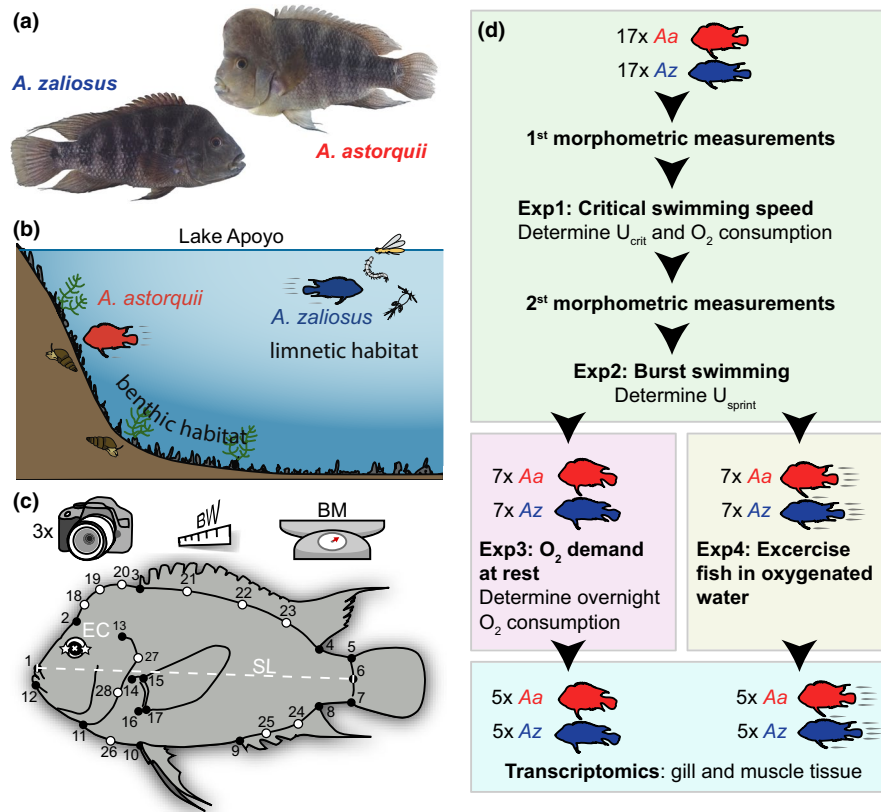


FIGURE 1 Study model and design. (a,b) The sympatric species in Lake Apoyo are morphologically and ecologically distinct. The benthic *Amphilophus astorquii* exhibits a deep body (Aa, red) and the limnetic *Amphilophus zaliusus* a more streamlined profile (Az, blue). (c) Morphological features of 34 specimens were analyzed using repeated standardized photographs and a set of 17 landmarks (black dots) and 11 semi-landmarks (white dots). Two additional points (white stars) were used to retrieve the coordinates of the eye center (EC). Standard body length (SL) was determined as the distance from LM 1 to 6, and body height as the distance between LM 3 and 10. Additionally, we manually measured body mass (BM) and body width (BW) of each fish (see main text). (d) Working pipeline: the two species were compared in cruising and sprinting swimming performances using two different experiments: critical swimming (Exp1) and sprint swimming (Exp2). During Exp1, two measures were collected: critical swimming speed (U_{crit}) and oxygen consumption (MO_2), while during Exp2 only sprint swimming speed (U_{sprint}) was collected. Then, seven individuals per species were subjected to a rest (Exp3) experiment and another seven to an exercise (Exp4) experiment for estimates of oxygen consumption at rest. Of these, five individuals per species and treatment were used for transcriptomic comparisons. Abbreviations: Aa, *A. astorquii*; Az, *A. zaliusus*

from Crater Lake Apoyo perform differently in terms of cruising and sprinting swimming performance, and if any measured variation in swimming ability is correlated with morphological variation. We also investigated another physiological factor potentially linked to swimming performance and body shape: metabolic rates, i.e., energetic expenditure at rest and during activity, which can be estimated using oxygen consumption (e.g., McDonnell & Chapman, 2016; Peake & Farrell, 2006; Reidy, Nelson, Tang, & Kerr, 1995). At the molecular level, we characterized the transcriptomes for gill and muscle tissues of both species at rest and during exercise to explore transcriptional differences between species and activity states and identify the potential underlying key genes and pathways.

According to their body features and habitat use, the benthic high-bodied *A. astorquii* would be expected to show enhanced sprinting swimming ability, while increased cruising swimming performance is predicted for the limnetic elongated species *A. zaliusus*. Differences in swimming performance related to divergent habitat

usage may further have coevolved with overall metabolic rate: pelagic predators (such as *A. zaliusus*) often evolved increased metabolic rates and thus energy demand to support cruising swimming. Alternatively, the more elongated morphology of *A. zaliusus* may reduce drag during swimming and thus also energy demand compared to the deep-bodied *A. astorquii*. We expect to find these metabolic differences reflected in divergent oxygen demand and gene expression patterns between species. Finally, further species-specific trade-offs may affect these species' metabolic rates, which are currently unexplored in Midas cichlids (e.g., Ellerby & Gerry, 2011; Killen et al., 2016; Webb, 1984b; further references in Appendix S1 References).

This integrated study sheds light on the importance of body shape as an ecologically and evolutionarily relevant trait during niche diversification. We suggest that environmental oxygen availability and heterogeneous habitat use could be additional environmental/physiological variables that play a role in ecological specialization and thereby adaptive divergence in sympatry.

TABLE 1 Investigated swimming performances, expected associated morphological characteristics enhancing these abilities, predicted habitat-linked effects on fish fitness and protocols used to measure these swimming performances in this study (Higham et al., 2016; Langerhans, 2009; Langerhans et al., 2007; Rouleau et al., 2010; Webb, 1984a; further references supporting these expectations are available in Appendix S1)

Swimming performance	Body feature	Predicted fitness effect (habitat)	Protocol (experiment)
Cruising	Fusiform shallower body High body rigidity High aspect ratios fins Lunate caudal fin Narrow caudal peduncle Low head hump	Facilitate foraging on patchy distributed food items in open waters (limnetic habitat)	Critical swimming speed (Exp1)
Sprinting	Compressed deep body High body flexibility Low aspect ratios fins Broad pectoral fin base Truncated caudal fin Deep caudal peduncle	Beneficial for escaping and hunting in structured habitats such as the ground-associated (benthic) zone ("sit-and-wait" predator-prey interactions)	Sprint swimming speed (Exp2)

2 | MATERIALS AND METHODS

We performed four experiments to test for species' differences in swimming performances, metabolic rates and gene expression profiles at rest and during activity. Specifically, the first experiment aimed to investigate swimming abilities and oxygen consumption in cruising swimming (Exp1); the second experiment tested swimming performances during sprinting (Exp2); the third experiment estimated oxygen consumption and gene expression at rest (Exp3); finally, the fourth experiment explored transcriptome divergence during activity (Exp4).

2.1 | Experimental fishes

One brood from each species of *Amphilophus astorquii* and *Amphilophus zaliosus* (Figure 1a,b) were obtained from each one mating pair of laboratory-raised fish collected as fry in Lake Apoyo (Nicaragua) in 2007 with permission of the local authorities (the Ministerio del Ambiente y los Recursos Naturales of Nicaragua, MARENA). Parents were selected randomly to avoid bias and our morphological measurements (see below) confirm that sampled fish reflect the expected natural divergence in morphology between species, as plasticity was found to not affect these fishes' morphology significantly (Franchini, Fruciano, Spreitzer, et al., 2014; Kautt, Machado-Schiaffino, Torres-Dowdall, et al., 2016).

The two broods were raised simultaneously in two tanks under the same laboratory conditions. Fish were individually labelled using PIT tags and raised for 2 years (i.e., until they were all sexually mature). Individuals of the two species were tested in an alternating fashion and all in the same season. To improve concision, more detailed protocols for some analysis steps are available in the Appendix S1 Protocol and Appendix S1 Statistics 1 & 2. All calculations and statistical analyses were conducted in R v. 3.4.2 (Levin, Klar, & Ramsdell, 2016).

2.2 | Swimming performances and oxygen consumption: Protocols in Experiment 1 (Exp1) and 2 (Exp2)

Swimming trials were conducted after a first set of photos for morphometric analyses were taken (Figure 1c, see below) in a *Loligo* 185 L complete swim tunnel system (<http://www.loligosystems.com/>).

For each trial, a single fish was tested individually (total $n = 34$, Figure 1d). Body width (BW), wet body mass (BM) and initial measurements of body standard length (iSL) and body height (iBH) were recorded (Figure 1c). After a preparatory and an acclimation phase, we tested critical swimming speed (U_{crit} ; the maximum speed a fish can swim for at least 20 min) or sprint swimming speed (U_{sprint} ; the maximum speed a fish can reach during constant and relatively rapid acceleration of water flow) using two different protocols. These protocols are two of the most widely used methods to measure the cruising and sprinting performance of aquatic organisms, respectively. Briefly, to determine U_{crit} , the water velocity was incrementally increased by 10 cm/s every 20 min until exhaustion (i.e., the fish was pushed against the grid at the end of the swimming chamber) and U_{crit} was calculated according to Brett (1964): $U_{crit} = U_1 + [U_2 \times (T_1 / T_2)]$ in cm/s, where U_1 is the highest velocity maintained for a full 20 min interval (in cm/s), U_2 are the velocity increments between steps (10 cm/s), T_1 is the time spent at the fatigue velocity (in s), and T_2 is the time between increments (1,200 s). Sprint swimming speed was determined by an immediate velocity increase after acclimatization from 10 to 40 cm/s and subsequent incremental increases by 5 cm/s every 30 s until exhaustion, and U_{sprint} was calculated in the same manner as U_{crit} . Both measurements were corrected for the solid blocking effect using iSL and iBH (more details and references in the Appendix S1 Protocol).

In the first experiment (Exp1), oxygen consumption per kilogram (MO_2) was calculated for each fish and velocity phase as the decrease of O_2 concentration during the phase and corrected for background respiration (more details in Appendix S1 Protocol). Despite the fact that oxygen consumption for experiment Exp2 was measured, this

data is not presented as the short duration of the protocol may not have allowed the fish to metabolically switch to aerobic muscle movement, which best reflects metabolic rates.

Each fish was tested once in these two experiments (Exp1 and Exp2), allowing a recovery period of at least 24 hr between the two trials. Two fishes (one fish per species) were excluded in Exp1 and Exp2 from downstream analyses of U_{sprint} , U_{crit} and oxygen consumption, as performance results were clearly outliers and swimming behaviour was atypical, leading to a sample size of $n = 16$ per species at this point.

2.3 | Rest/exercise: protocols in experiments Exp3 and Exp4

After a recovery period of several weeks, the remaining fish were split into two groups per species. Only seven individuals per group and species were tested as some PIT tags were lost during the recovery period.

The first group of seven individuals per species was used to estimate oxygen consumption and gene expression at rest (third experiment, Exp3 hereafter, Figure 1d). Only a very low (5 cm/s) but constant water velocity was used to ensure oxygen replenishment without forcing the fish to swim. Measurements were conducted overnight by alternating phases of oxygen measurement with phases for oxygen replenishment, with all phases taking 1 hr except a final 1.5 hr phase oxygen replenishment. Oxygen consumption per kilogram and phase was calculated as in Exp1. The second group of seven individuals per species was used to obtain exercised fish in oxygenated waters for transcriptome analyses (fourth experiment, Exp4 hereafter, Figure 1d). For this purpose, water velocity was incrementally increased by 10 cm/s every 5 min to a speed that all fish were able to swim (according to Exp1; 70 cm/s), which took 35 min in total and well beyond the duration for which a switch from anaerobic muscle movement to aerobic muscle movement is expected to occur (Hammer, 1995). The water was also kept at high dissolved oxygen levels (>95%) throughout the experiment (more details on Exp3 and Exp4 in the Appendix S1 Protocol).

After experiments Exp3 or Exp4, fish were immediately euthanized (MS222, 0.4%, pH adjusted). The whole second gill arch and an epaxial white muscle tissue sample were immediately dissected for transcriptome analyses, moved to RNAlater (Merck, R0901) and stored at -20°C .

2.4 | RNA extraction, sequencing, transcriptome analyses and GO analysis

RNA was extracted from muscle and gill samples, RNA-seq libraries were synthesized and sequenced (151 bp, paired end on an Illumina HiSeq X Ten platform). For a few samples, no high-quality RNA or cDNA library could be obtained from stored tissue and the total sample size was adjusted to maintain a balanced design with a total

of 40 samples (five samples \times two species \times two tissues \times two activity states; for a detailed protocol of RNA extraction and library synthesis see Appendix S1 Protocol). A reference-based transcriptome was assembled and annotated using the Midas cichlid genome as reference (unpublished data) and transcript per million (TPM) expression tables were generated for each sample (see Appendix S1 Protocol for details). Pairwise analyses of differential gene expression were conducted for each tissue type separately and species-independent transcriptional change between rest and exercise state was calculated using "species" as nested factor. The STRING software (v 11.0) was used to explore putative protein regulatory networks represented by annotated differentially expressed genes (Szkłarczyk et al., 2018; for details see Appendix S1 Protocol).

2.5 | Morphological data collection, preprocessing and repeatability

Standardized photographs of each tested fish were collected after experiments Exp1 and Exp2 (three photos per individual per experiment). These photos were used to manually determine the coordinates of 17 landmarks (LM), 11 semi (sliding) landmarks and two points that were used to infer the eye centers of the fish (Figure 1c). Distances were translated to metric units and standard length (SL) was determined as the distance between LM1 and LM6. To assess the repeatability of the morphometric data set, landmarks were digitalized three times from each photo. Using the `gpagen()` and `procD.lm()` functions (R package GEOMORPH v. 3.0.1, Adams, Collyer, Kaliontzopoulou, & Sherratt, 2017) the variation induced by digitalization and fish positioning was compared to the variation by individual. Finally, all photos per individual and per experiment were used to generate a final morphometric landmark data set using Procrustes Analysis (`gpagen()` function of the GEOMORPH R package, Adams et al., 2017; see Appendix S1 Protocol for details on the morphological data collection, preprocessing, repeatability assessment and on the generation of the final data set).

Since the obtained morphological variables were initially highly autocorrelated and often confounded with fish size or between species, a number of corrections were applied. All morphological data were corrected for size differences among individuals to remove variation in body shape linked to age and thus size (Meyer, 1990). As an estimator of size, we initially considered standard length (SL), centroid size and the natural log of individuals' body mass ($\log[\text{BM}]$). Overall, conclusions using these different size estimators were similar. However, in our opinion, $\log(\text{BM})$ reflects overall size more appropriately and is least affected by body shape differences; thus, for all analyses provided in this manuscript we always refer to the $\log(\text{BM})$ results (the full analysis using the more traditional standard length as size estimator is available in the Appendix S1 Statistics 2). To correct for species differences in $\log(\text{BM})$, with *A. astorquii* being on average heavier than *A. zali- osus* (two sided *t* test, $t = 2.68$, $df = 25.91$, $p = .015$, for both Exp1 and Exp2), we excluded particularly heavy *A. astorquii* and light

A. zalius from the analyses (Appendix S1 Statistics 1), reducing the total sample size to $n = 22$ (the additional analyses using SL as size estimator provided in the Appendix S1 Figures and Statistics retained the total sample size $n = 32$ as SL did not differ between species (t test; $t = 0.92$, $df = 27.79$, $p = .363$, and $t = 0.77$, $df = 28.02$, $p = .445$ for Exp1 and Exp2).

The `procD.lm()` function (3,000 permutations; R package `GEOMORPH`) was used to perform Procrustes ANOVAs with permutation procedure. In each of these analyses, we used one experiment-wise coordinates data set as dependent variables and species, $\log(\text{BM})$ and their interaction (Species \times $\log(\text{BM})$) as independent variables. Independent variables significantly affected body shape (see Section 3 for details) in both experiment-wise data sets and thus the residuals of these models were used to perform Principle Component Analyses (PCA). Subsequently, for each experiment, the corresponding principle components (PCs) individually explaining at least $\sim 5\%$ of total variation were selected, which corresponded to PC1-5 in both geometric morphometric PCAs (Exp1 and Exp2).

To correct body width (BW, a linear morphometric measurement) for the confounding effects of fish size ($\log(\text{BM})$) and species, a linear regression model was fitted for each experiment (Exp1 & Exp2) separately using size ($\log(\text{BM})$) and species (Species) as well as their interaction ($\log(\text{BM}) \times$ Species) as independent variables and BW as dependent variable. As only size affected BW significantly ($p = .011$ and $p = .011$ for Exp1 and Exp2, respectively, see Data S1), the Species term and the interaction terms were removed, and the models recalculated. Downstream analyses used the BW residuals (BW_residuals) derived from these models. Following these steps, our final models were calculated using predictors with very low/no redundancy.

2.6 | Model selection approach

To explore the relationship between swimming performance (Exp1 & Exp2) or oxygen consumption (only Exp1) and explanatory variables (described in the following paragraphs), a standardized model selection approached using the R `stepAIC()` function was used to select a suitable linear model based on BIC scores (R package `MASS` v. 7.3-45; Venables & Ripley, 2002). The species term, being the focus of this study, was always retained in the final model and an ANOVA type II table was produced using the `ANOVA()` function (R package `CAR` v. 2.1-2; more details on the model selection approach can be found in the Appendix S1 Protocol).

2.7 | Effects of the species term and morphological parameters on swimming performance and oxygen consumption

Swimming performance data were parametric in both experiment Exp1 (U_{crit}) and Exp2 (U_{sprint}) as suggested by the Shapiro–Wilk test

(Shapiro & Wilk, 1965) and the Levene test (Levene, 1960, R package `CAR`). The relationship between morphology (selected PCs and BW_residuals), Species and $\log(\text{BM})$ (as independent variables), and swimming performance (U_{crit} or U_{sprint} , dependent variable) was investigated separately for the two experiments using univariate linear models for Exp1 and Exp2, respectively. The model selection approach described above was applied to select the most suitable models describing U_{crit} and U_{sprint} (Data S1).

After confirming normality of oxygen consumption using the function `qqp()` with a normal distribution (R package `CAR`), we tested the relationship between MO_2 as dependent variable and the same independent variable used for swimming performances tests. As MO_2 was measured during different velocity phases, velocity was included as another independent covariate. To consider the nonindependence between the velocity phases, we included fish ID as a random effect. We used linear mixed-effects models fitted by maximum likelihood (R package `NLME` v. 3.1-128). A similar linear mixed-effects model was used to explore the relationship between MO_2 at rest (Exp3, as dependent variable, normally distributed), and species and “measure phase” as independent variables. The same model selection approach was used to select the most appropriate explanatory variables (Data S1). For all final models the `ANOVA()` function (package `car`) was used to compute type II ANOVA tables.

This study was conducted in accordance with local animal welfare regulations and approved by the local Animal Welfare Board (permission number G-16/42 and G-17/54, Freiburg, Germany). All efforts were made to minimize animal suffering through careful collection, handling, and swimming trials based upon the natural rheotactic behavior and self-motivation of individuals.

3 | RESULTS

3.1 | Species and size affect morphological variation

We analyzed morphological differentiation between the two focal species using a geometric morphometric approach (Figure 1 and Figures S1–S3). Using aligned landmarks, species differed significantly in body shape (Procrustes ANOVA: Species $F = 27.98$, $df = 1$, $p < .001$; Figure 2, Data S1). *Amphilophus astorquii* showed the expected larger body-height/body-length ratio (i.e., a deeper body) and a relatively shorter caudal peduncle. It also showed a much more pronounced nuchal hump (a protuberance on the forehead that is prominent in males, clearly visible in *A. astorquii* in Figure 1a) when fishes of similar SL are compared between species (Figures 1, 2 and S2). In addition, size ($\log(\text{BM})$) significantly affected body shape in both species (Procrustes ANOVA: $\log(\text{BM})$ $F = 2.36$, $df = 1$, $p < .001$, Figure 2, Appendix S1 Statistics 1): with increasing body mass, fish become more deep-bodied and the relative length of the caudal peduncle shorter. However, this trend seemed to be less pronounced in *Amphilophus zalius* compared to *A. astorquii* (Procrustes ANOVA: Species \times $\log(\text{BM})$ $F = 2.36$, $df = 1$, $p < .001$; Figure 2, Appendix S1 Statistics 1, for Exp2 see Figure S1).

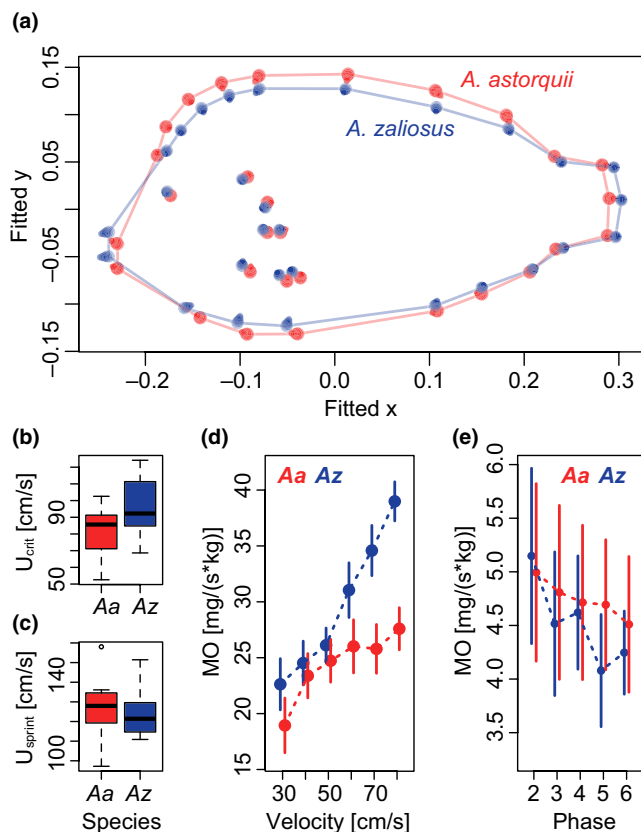


FIGURE 2 Morphological data, swimming performance and oxygen consumption for Exp1 to Exp3. (a) Fitted landmark coordinates for investigated values using Procrustes regression (only Exp1 fish). Significant morphological divergence was identified between species, with *Amphilophus astorquii* (red) having relatively higher, but shorter, bodies (i.e., “deeper”) than *Amphilophus zaliosus* (blue, more “shallow”) bodies. The natural logarithm of body mass is reflected by the symbol sizes. (b) Critical swimming speed according to Exp1 ($n = 22$) for both species. (c) Mean sprint swimming speed (U_{sprint}) according to Exp2 ($n = 22$) for both species. (d) Mean oxygen consumption (MO) of *A. astorquii* and *A. zaliosus* at different swimming speeds (= water velocities) during U_{crit} ($n = 22$). (e) Mean oxygen consumption (MO) of *A. astorquii* and *A. zaliosus* individuals across consecutive measurement phases during rest (water velocity constant at 5 cm/s; $n = 14$). (d,e) Vertical lines indicate \pm SE around the mean [Colour figure can be viewed at wileyonlinelibrary.com]

3.2 | Divergence in cruising but not sprinting swimming performance between species

We investigated the association of species, size, body width and geometric morphometrics data (PCs, see Figures S4–S7) with swimming performances. Model selection steps and full statistical output are provided in the Appendix S1 Statistics 2. Critical swimming speed (U_{crit} , Exp1) differed significantly between species ($F = 4.7$, $df = 1$, $p = .0424$; Figure 2b), suggesting that *A. zaliosus* reached higher critical swimming speeds than *A. astorquii*.

Sprint swimming speed (U_{sprint} , Exp2) was not different between species ($F = 0.11$, $df = 1$, $p = .739$; Figure 2c). In contrast, we identified a significantly ($F = 15.85$, $df = 1$, $p < .001$) negative

effect of body width on sprint performance, suggesting that wider fish showed lower sprint performance. However, as body width measurements were negatively correlated with PC3 (Appendix S1 Statistics 1), the morphological variation reflected by PC3 may also have contributed to this, suggesting that more anteriorly shifted jaw tips may also be linked to higher sprint performance. A significant negative effect of PC5 ($F = 5.52$, $df = 1$, $p = .03$) on sprint swimming speed indicated that fish with longer caudal peduncle showed higher performance.

3.3 | Higher oxygen consumption in *A. zaliosus* during activity but not rest

To examine the link between the species term, external morphology and active metabolic rate, we modeled oxygen consumption (MO_2) during the critical swimming experiment (Exp1) and at rest (Exp3) using species, the geometric morphometric datasets (PCs), body width and flow velocity as independent variables. Individuals were included as random effects (model selection steps, full statistics and estimates of effects are presented in Appendix S1 Statistics 2). Our model suggests that *A. zaliosus* consumed slightly less oxygen than *A. astorquii* at very low velocities (<30 cm/s) while it consumed considerably more oxygen at higher velocities (species: negative effect: $\chi^2 = 6.35$, $df = 1$, $p = .012$; velocity: positive effect, $\chi^2 = 125.58$, $df = 1$, $p < .001$; interaction between species and velocity: positive effect, $\chi^2 = 25.93$, $df = 1$, $p < .001$). Similarly, the negative effect of body mass on MO_2 at low velocities became positive at higher velocities (>40 cm/s, body mass: negative effect, $\chi^2 = 8.91$, $df = 1$, $p = .003$; interaction between body mass and velocity: positive effect, $\chi^2 = 16.93$, $df = 1$, $p < .001$). Additionally, more pointy-faced fish with larger heads, but slimmer, more elongated bodies (PC4) and decreased body width consumed less oxygen (PC4: positive effect, $\chi^2 = 32.61$, $df = 1$, $p < .001$, also positively correlated with BW_{resid}). MO_2 at rest (Exp3) showed no divergence between species ($\chi^2 = 0.07$, $df = 1$, $p = .791$), while “phase” (i.e., the consecutive measurement intervals) had a negative effect ($\chi^2 = 11.82$, $df = 1$, $p < .001$). This indicates that increased MO_2 of *A. zaliosus* compared to *A. astorquii* in cruising swimming is linked to exercise (for model selection steps and full statistics see Appendix S1 Statistics 2).

3.4 | Transcriptomic divergence between species is most pronounced during activity, particularly in gills

The reference-based approach used for our transcriptome analysis allowed us to estimate expression values for the 22,495 genes included in our most recent inhouse Midas cichlid genome annotation, although, as expected, not all genes were expressed in each tissue and activity state (Data S1). This data set was used to identify differentially expressed genes (DEGs) between the two tested states (rest vs. exercise in Exp3 and Exp4, respectively) and species (*A. astorquii*

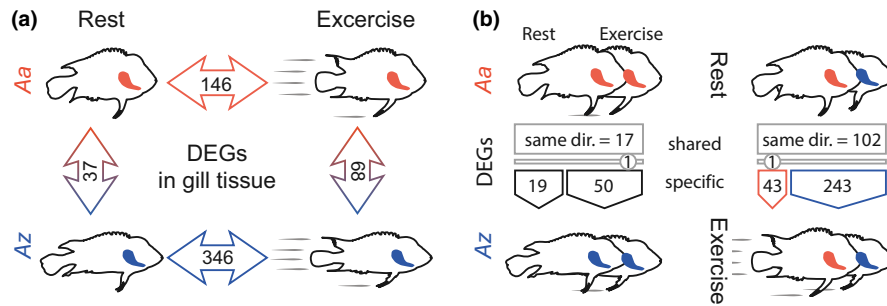


FIGURE 3 Differential gene expression between the two investigated species at rest and exercise in gill samples. (a) Transcriptomics on gill lamellae revealed 146 and 346 differentially expressed genes (DEGs) between rest and exercise state in *Amphilophus astorquii* (Aa) and *Amphilophus zaliosus* (Az), respectively. At rest and exercise 37 and 68 DEGs differentiated the species, respectively. (b) Among the DEGs that differentiated the species at rest and exercise, 17 appeared in both states with the same direction of regulatory change and only one gene showed expression change in the opposite direction (i.e., the sign in front of the log₂ fold-change changed). A total of 19 genes differentiated species only at rest and 50 only at exercise and 102 DEGs differentiating rest and exercise samples were identified in both species and only one additional gene showed an inversed direction of expression change. 43 additional DEGs were specific for Aa and 251 for Az [Colour figure can be viewed at wileyonlinelibrary.com]

vs. *A. zaliosus*) for each of the two investigated tissues (gill and muscle). Whole transcriptome tissue-wise PCA analyses suggested that gill samples showed distinct expression patterns according to species and activity state. In contrast, muscle transcriptomes did not (Figure S8; see Appendix S1 & Data S1 for annotated expression tables).

Between species' gill tissues, 37 genes were differentially expressed at rest (46% of them expressed at higher levels in *A. astorquii* compared to *A. zaliosus*) and 68 during exercise (74% showed higher expression levels in *A. astorquii* than *A. zaliosus*; Figure 3a). A total of 18 of these genes were shared between species and 17 of them showed the same direction of expression differences between species at rest and exercise (Figure 3b). The single shared gene presenting a different direction of regulatory change between states was *snf8*.

We identified DEGs between rest and exercise in Midas cichlid gills by pooling both species gill samples (but accounting for a "Species" effect via a nesting factor). A total of 531 DEGs were identified, 128 of which were upregulated during exercise and 403 upregulated during rest. Proteins encoded by the 497 annotated genes among these 531 DEGs showed significant more regulatory interactions than expected by chance (PPI enrichment $p < .001$). Additionally, a significant functional enrichment of mitogen-activated protein (MAP) kinase phosphatase genes was detected (FDR $p = .0152$). Within species, 146 and 346 DEGs were differentially expressed between activity states for *A. astorquii* and *A. zaliosus*, respectively (Figure 3a). Of these, 12% and 24% showed higher expression at exercise in *A. astorquii* and *A. zaliosus*, respectively. 103 DEGs were shared between both species DEGs (out of the 146 and 346 DEGs) and 102 of them showed the same direction of regulatory difference (i.e., the direction of their significant regulatory difference between rest and activity does not differ between species; Figure 3b). Again, one shared gene, *snf8*, showed the opposite direction of regulatory change from rest to exercise between species.

In muscle tissue, species were differentiated by seven DEGs during rest, of which two showed higher expression levels in *A. astorquii* compared to *A. zaliosus*, and eight DEGs during exercise, of which three were more highly expressed in *A. astorquii* compared to *A. zaliosus* (Figure S9b). Pooling species (but accounting for its effect via a nesting factor) yielded a total of 115 DEGs when comparing rest and exercise, of which 46 were upregulated during exercise and the remaining 69 during rest. A total of 113 of these genes were annotated and STRING analysis again suggested significant more regulatory interactions than expected by chance (PPI enrichment $p < .001$). In muscle, a significant functional enrichment of AP1 transcription factor domains was detected (FDR $p = .017$). Within species, we found 38 and 23 genes to be differentially expressed between activity states for *A. astorquii* and *A. zaliosus*, respectively (Figure S9a). Of these, 53% and 48% were more highly expressed in resting muscle tissue for *A. astorquii* and *A. zaliosus*, respectively. Among the 38 and 23 DEGs between resting and exercise stages in *A. astorquii* and *A. zaliosus*, respectively, six were shared between species and all of them showed the same direction of expression differences, i.e., the direction of the significant differences between rest and activity did not differ between species. Three out of the seven and eight genes differentiating the species at rest and exercise, respectively, were shared and the direction of significant difference between species is the same for both activity states (Figure S9b).

Genes whose expression differed between species exclusively during activity are most likely linked to adaptive differences in swimming physiology, and DEG numbers in gill tissue reflect patterns found for this physiological divergence particularly well (50 genes + *snf8*, Figure 3b). The annotation of these genes revealed that many of them were related to gene expression regulation, signal transduction and intracellular transport (Data S1). These genes might represent basal homeostasis genes. Alternatively, due to the brevity of our exercise protocol (Exp4), these genes might represent the activated early genes of cascades leading to the

differential expression of final effector genes, such as genes regulating metabolism or oxygen intake. Specifically, genes that were upregulated in *A. astorquii* were linked to stimulation of energy expenditure, regulation of feeding and locomotor behaviour (such as *cart2*, Abbott & Volkoff, 2011) as well as molecular responses to increase oxygen availability in tissue such as angiogenesis (*tph1a*, *ece2a*, *cxc4a*, Bussmann, Wolfe, & Siekmann, 2011; Hyndman & Evans, 2007; Kwan et al., 2016). The one gene that did completely inverse the direction of expression difference between species from rest to exercise, *snf8*, is probably involved in the regulation of catabolic processes (Malerød, Stuffers, Brech, & Stenmark, 2007; Yeghiayan, Tu, Vallier, & Carlson, 1995).

Several genes with differential expression patterns between species in gill tissue at either rest (20 genes) or exercise (51 genes) appeared to be associated with differential MO_2 during exercise in the two species (Figure 3b). To explore coexpression patterns among them, hierarchical cluster analyses were performed on these genes' expression data (Figure 4). During exercise, eleven genes showed decrease expression in *A. astorquii* compared to *A. zalius*, while the opposite pattern was found for 39 genes (one gene showed an ambiguous patterns). At rest, opposite patterns were observed with respect to gene numbers: most genes ($n = 14$) had decreased levels of expression in *A. astorquii* compared to *A. zalius*, while fewer genes showed the reverse pattern ($n = 5$; one gene with an ambiguous expression pattern). Cluster analyses were not performed for muscle due to the low number of identified differentially expressed genes.

4 | DISCUSSION

The Midas cichlid fish benthic-limnetic species pair *Amphilophus astorquii* and *Amphilophus astorquii zalius* inhabiting the Nicaraguan Crater Lake Apoyo represents a striking example of adaptive divergence with gene flow along the benthic-limnetic axis (Barluenga et al., 2006; Elmer et al., 2014; Meyer, 1990). We tested these two species for differences in swimming performances that are thought to be adaptive in their respective divergent ecological niches (benthic vs. limnetic; Appendix S1 References). Our results indicate that these species differ in cruising swimming performance, oxygen demand and gene expression during activity. We provide empirical evidence that external body morphology together with physiological mechanisms indeed constitute ecologically relevant traits that probably represent adaptations to the limnetic and benthic habitats. These traits facilitate niche segregation and the inferred performance trade-off probably contributes to adaptive divergence further supporting the hypothesis of ecological speciation.

4.1 | Divergent morphology and swimming performance in Midas cichlids

Body shape variation between *A. astorquii* and *A. zalius* has been shown to mirror ecological specialization in habitat use (Barluenga

et al., 2006; Franchini, Fruciano, Spreitzer, et al., 2014). In line with these previous studies, we confirmed that the two Midas species differ in their external morphology, most pronouncedly in body depth (*A. astorquii* being more high-bodied but shorter), body mass to body length ratio (*A. astorquii* being considerably heavier per cm standard length) and the nuchal hump size (see also Sections 2 and 3).

Consistent with ecological differences and predictions on functional morphology (Table 1, Appendix S1 References), we found a higher cruising performance in *A. zalius* than in *A. astorquii*. This difference may be due to divergent body morphology (e.g., resulting in different drag, Figure 1), divergent physiologies (e.g., divergent metabolic rates, Figure 3) or a combination of both. We observed species' differences in nuchal humps, a male sexual trait that is strongly preferred by females in Midas cichlid fishes (Barlow & Munsey, 1976; Barlow & Siri, 1997) but could be costly in terms of swimming performance (the handicap principle; Zahavi, 1975). However, divergent critical swimming speed is established even in individuals without pronounced nuchal humps (i.e., our body mass-matched subselection). No other morphological variables were significantly linked with critical swimming performance indicating that, if external morphology affects critical swimming ability, this variation is already accounted for in the species term of our models, which includes other species-related factors such as divergent physiologies. Despite this confounding effect of species on body morphology, it is reasonable to assume that the observed difference in performances is at least partially due to divergent body shapes, as differences in external body shape have been linked to divergent swimming performances before (Barluenga et al., 2006; Franchini, Fruciano, Spreitzer, et al., 2014, Appendix S1 References, Table 1). This supports the notion that *A. zalius*'s distinct limnetic morphology might have evolved specifically in response to selection for increased cruising performance in their open water habitat, an ability that would be expected to enhance their catching ability of evasive and patchily-distributed food sources (Barluenga et al., 2006; Elmer et al., 2014; Franchini, Fruciano, Frickey, et al., 2014).

The benthos-associated fish *A. astorquii* was expected to outperform *A. zalius* in sprinting swimming performance. However, we did not observe significant differences in sprint swimming speed (Exp2) between these two species. Although these cichlid species exhibit conspicuous differences in their external morphologies, swimming abilities are the result of the combination of numerous factors including body shape, physiology, overall condition and swimming behavior. This complex physiological integration could have masked more subtle differences, decoupled physiological systems or the use of different underlying physiological or locomotion strategies (e.g., Crespel et al., 2017; Hendry, Hudson, Walker, Räsänen, & Chapman, 2011; Law & Blake, 1996).

From a morphological perspective, sprint swimming performance (Exp2) was negatively correlated with body width (BW, which did not differ between species, see Sections 2 and 3), potentially resulting from an increase of drag associated with this feature (Van Wassenbergh, Potes, & Adriaens, 2015). Mechanistic trade-offs may not allow these species to evolve a further reduced body width as

(a) Candidate DEGs appearing only in rest

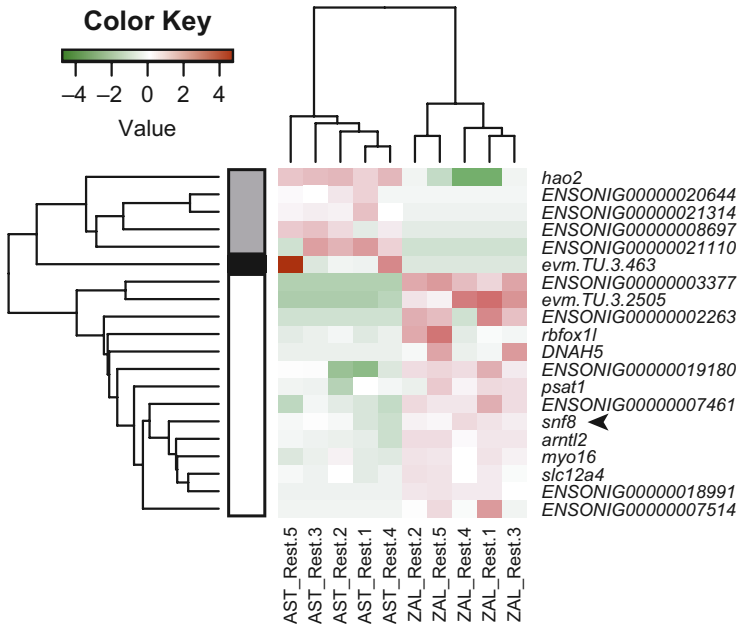
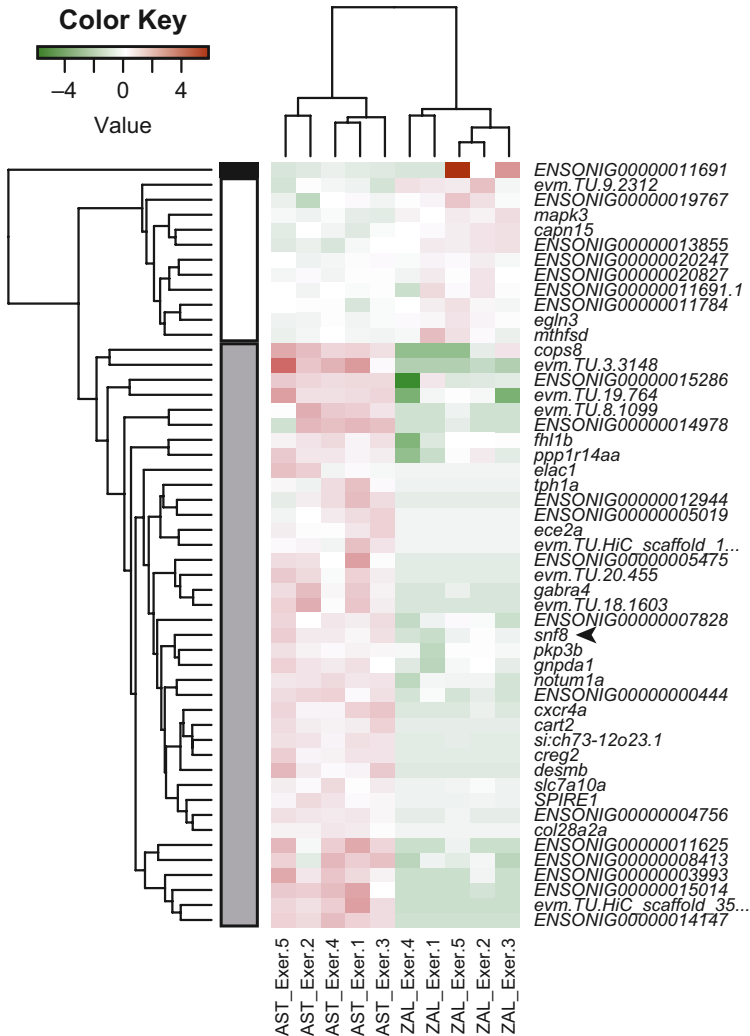


FIGURE 4 Hierarchical clustering of genes differentially expressed between species, excluding those that show the same pattern in both activity states. (a) Twenty differentially expressed genes (DEGs) were found to only differ at “rest” (Exp3) between species. Of these, five were found to be higher expressed in *Amphilophus astorquii*, while 14 presented higher expression levels in *Amphilophus zalius* (one being ambiguous). (b) Fifty-one DEGs were uniquely identified when “exercise” (Exp4) samples were compared, 38 of which showed higher expression in *A. astorquii* while 11 in *A. zalius*. The black arrow indicates *snf8*, the only DEG that was identified at rest and exercise but did not show a regulatory change in the same direction, i.e., at rest *snf8* is upregulated in *A. zalius* while at exercise it is upregulated in *A. astorquii*

(b) Candidate DEGs appearing only in exercise



it may compromise the functionality of other traits such as pharyngeal jaw crushing or gill oxygen uptake (Chapman, Galis, & Shinn, 2000). Sprint swimming performance was also positively associated with caudal peduncle length (PC5) in association with almost no other morphological differences (except for slightly more dorsally operculum, LM 13 and 27; PC5). This finding seems to suggest that increased caudal peduncle length may lead to enhanced propulsion. Interestingly, *A. zalius* typically have relatively longer caudal peduncles, but we did not observe differences between species in sprint swimming test (Exp2).

4.2 | Metabolic differences associated with habitat use

Oxygen consumption (MO_2) was used as a measure for energy demand and thus metabolic rate during cruising swimming and rest. We expected divergent oxygen demand between the streamlined limnetic *A. zalius* and the deep-bodied benthic *A. astorquii*; however, the direction of divergence was hard to predict as opposing effects have been observed in fishes: while stream-lined species produce less drag than deep-bodied ones and thus should need less energy (and thus oxygen) to swim, pelagic swimmers tend to generally have higher metabolic rates to support cruising swimming (Ellerby & Gerry, 2011; Killen et al., 2016), which predicts higher oxygen demand. In line with the first hypothesis, more pointy-faced fish with shallower bodies required less oxygen (PC4 of Exp1). However, we also documented increased MO_2 in *A. zalius* compared to *A. astorquii* in cruising swimming (Exp1) and, independently of species, fish of larger size (i.e. mass) have a lower MO_2 per kg body mass during exercise than smaller individuals, probably reflecting size-dependent relative drag reduction (Hoerner, 1965; Webb, 1975). Alternatively, the relationship of metabolic rate to bodyweight may in this species deviate from the classically assumed $MO_2 \sim BM^{-1}$, which we also applied in this study (see Appendix S1 Protocol). However, the used metabolic scaling is unlikely to affect our species comparisons as we used fishes of similar weight. Future studies may thus strive to determine the precise relationship between body mass and metabolic rate, which would allow studies comparing metabolic rates using fish of different sizes (and thus body mass).

Divergent MO_2 during activity may represent a physiological adaptation to different oxygen concentrations where *A. astorquii* and *A. zalius* live and swim most actively (feeding). Trophic analyses revealed that prey and foraging grounds differ markedly between these two species (Figure 5; Barluenga et al., 2006; Elmer et al., 2014; Franchini, Fruciano, Frickey, et al., 2014). On the one hand, *A. zalius* exhibits trophic signatures typical for the limnetic habitat closer to the water surface that is enriched in oxygen and food of higher quality compared to the benthic environment. On the other hand, *A. astorquii* mainly feeds in the benthic zone at lower trophic levels (Figure 5); only its stomach contains *Chara* algae. These algae are bottom-dwellers that prefer clear, but deeper and less oxygenated waters (Barluenga et al., 2006; Elmer et al., 2014; Guha, 1995).

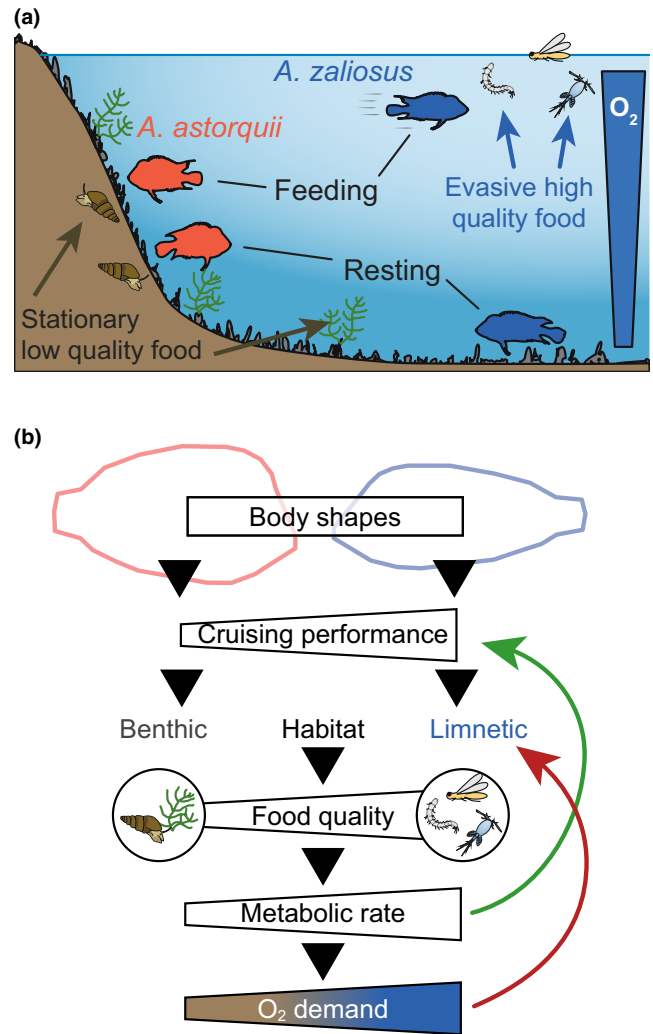


FIGURE 5 Ecological niches of the two analyzed species in Lake Apoyo. (a) *Amphilophus astorquii* mainly feed on plants, mollusk and *Chara* algae from the benthic zone, while *Amphilophus zalius*' diet includes insects, larvae, fish and scales from the limnetic area, but no algae. *A. astorquii* rests at the same site it feeds, while *A. zalius* more often rests at considerably deeper waters compared to its feeding depth, probably resulting in more heterogeneity in oxygen supply across the day. (b) The slender body morphology probably allows *A. zalius* to efficiently prey upon evasive pelagic prey items at higher trophic levels, possibly resulting in an increased nutrient supply. This may have allowed the fish to evolve a higher metabolic rate during activity, which positively feedbacks in its ability to capture evasive prey. As oxygen supply remained limited during resting, *A. zalius* probably had to evolve a more variable metabolic rate compared to *A. astorquii*, limiting its metabolically demanding behaviours to highly oxygenated waters. Despite the fact that both species appear to have the same sprint ability, the complexity of its ecological interactions might thus not allow *A. zalius* to exploit the benthic niche (further details in the main text) [Colour figure can be viewed at wileyonlinelibrary.com]

Accordingly, the selective pressures to cope with low oxygen levels while actively foraging might have been more pronounced in *A. astorquii* than *A. zalius*. Trade-offs between swimming performance and tolerance to low resource availability, particularly oxygen, are

known from other teleosts. They contribute to divergent selection pressures that strongly favor ecological segregation: high metabolic rates and increased cruising performances in pelagic species and decreased metabolic costs and performances in benthic species (“cost reduction strategy”, Killen et al., 2016). Our findings suggest that this pattern of ecological differentiation might be observed also in this Midas cichlid species pair (Figure 5).

We observed no divergence in metabolic rate between species at rest, but *A. zalius* consumed significantly more oxygen with increasing velocity. Habitats used for resting and feeding are not only different for the species (Barluenga et al., 2006; J. Torres-Dowdall, personal communication), but also probably more heterogeneous for *A. zalius* compared to *A. astorquii*, possibly favouring a more variable metabolism to cope with these environmental differences in the former (Figure 5). In fact, as the former forage rather in open waters, they might need to descend to considerable depths to rest where dissolved oxygen levels are lower, while rest and feeding occurs at similar depths in the benthic species. Recent environmental measurements in Lake Apoyo showed that with increasing depth the dissolved oxygen levels are relatively constant at ~90% until at 10 m depth a sudden drop to ~60% occurs (Torres-Dowdall & Meyer, 2019). Heterogeneity in their habitat may have thereby contributed to the evolution of metabolic plasticity in *A. zalius*.

4.3 | Differentiation in gill and muscle transcriptomes

To our knowledge, this study is among the firsts to explore divergence in gene expression between recently diverged species and activity states (rest and exercise, Exp3 and Exp4, respectively) in target tissues (but for trout see Magnoni et al., 2013; Palstra et al., 2013). A PCA of gill and muscle transcriptomes suggests that gene expression was markedly differentiated between species and activity states in gills, and in contrast to muscle that showed no clear differences (Figure S9). *Amphilophus astorquii* and *A. zalius* are closely related species that diverged less than 24,000 years ago (Barluenga et al., 2006; Kautt, Machado-Schiaffino, & Meyer, 2016); strong divergent selection is thus expected to have caused these differences in genes expression. Alternatively, the observed pattern might reflect drift affecting tissue-specific expression or compensatory gene regulation. When all white muscle samples per activity state were pooled (and species used as nested effect), 115 genes were differentially expressed and these were enriched in AP1 transcription factor binding domains. Limited differentiation in muscle tissue within and between species may be due to the usage of white muscle (instead of red muscle) tissue. While white muscle is thought to be responsible for short-term burst swimming and less reliant on high oxygen supply, red muscle allows for endurance swimming at the cost of higher oxygen demand (Videler, 2012). It is thus possible that red muscle transcriptomic patterns would have shown a more pronounced divergence between species than white muscle did. However, a previous study exploring divergence between rest and exercised red and

white muscle transcriptomes of trout found overall very similar differentiation magnitudes between muscle types and activity states across genes (Palstra et al., 2013). Thus, both red and white teleost muscle may not respond strongly to the activity state by altering the expression of specific gene groups in Midas cichlids.

Overall, our PCA analysis for gill tissue suggests that the transcriptomic change between the rest and exercise state was the main source of variation in the transcriptomic data set (Figure S8: PC1, differentiating activity states, reflects ~29% of total variation), while species differences came second (Figure S8: PC2, differentiating species, reflects ~14% of total variation). The relatively small number of upregulated genes during exercise ($n = 128$) compared to downregulated genes ($n = 403$) suggests that during exercise transcriptional rates were decreased more broadly while genes whose expression increased contributed to more specific functions. The regulatory interaction analysis (Figure S10) suggests that more interaction between proteins encoded by DEGs were found than expected by chance, which would be expected when few, specific regulatory pathways underlie the transcriptomic difference between states. A prime candidate for such a pathway is the MAP kinase pathway, as it was identified to be significantly enriched among DEGs. MAP kinase signalling is critically involved in signal transmission from the environment into the cell and thus in regulating many cellular processes (Seger & Krebs, 1995) and it has been shown to respond to oxidative stress as well as physical exercise (Aronson et al., 1997; McCubrey, LaHair, & Franklin, 2006). Specifically, all dual specificity phosphatase genes among DEGs (*dusp1*, *dusp2*, *dusp5*, *dusp8a*, *dusp16*) were downregulated in exercise samples. These genes inactivate MAP kinases by dephosphorylation of either MAP kinase tyrosine or threonine residues (Camps, Nichols, & Arkinstall, 2000), which suggests that MAP kinase signalling is upregulated during exercise. Our STRING analysis also revealed that the largest identified regulatory cluster contained numerous genes contributing to cell proliferation or control the cell cycle (Data S1): while genes controlling cell arrest were downregulated during exercise (e.g., *gadd45b* and *gadd45g*) those assisting DNA replication were upregulated (e.g., *mcm5*, *mcm6* and *mcm7*; Kearsey & Labib, 1998; Marhin, Chen, Facchini, Fornace, & Penn, 1997). We conclude that gill tissue responded to physical exercise in our experiment probably by increasing gill cell proliferation and differentiation. For muscle tissue similar but less pronounced patterns were identified. A possible major regulatory pathway mitigating the white muscle response to exercise might be the AP1 transcription factor (Figure S11), which has been described to be involved in mitigating oxidative stress in response to exercise in skeletal muscle tissue (Hollander et al., 2001; Zhou, Johnson, & Rando, 2001).

At the species level, patterns of species' differentiation in the gill transcriptome suggest that the transcriptomic change from rest to exercise is more pronounced in *A. zalius* than in *A. astorquii* and that differentiation between species is more pronounced during exercise than rest, similarly to the pattern observed for MO_2 . Complementarily, genes that are differentially expressed between species during activity involve the regulation of energy expenditure

and response to hypoxia. Considering that water was constantly oxygenated during the exercise protocol (Exp4), the observed expression patterns suggest that a genetic adaptation to divergent oxygen levels evolved in response to different oxygen concentrations that are known to exist at different depths in Lake Apoyo. Thus, our data suggests that physiological and molecular adaptations in response to divergent oxygen levels associated with habitat specialization have probably coevolved along with feeding ecology of *A. astorquii* and *A. zaliosus*.

4.4 | Mechanisms underlying adaptive divergence

Mechanisms such as ecologically-based disruptive selection and assortative mating counteract gene flow and may lead to sympatric speciation (Bolnick, 2011; Gavrillets, Vose, Barluenga, Salzburger, & Meyer, 2007). It is currently not feasible to directly measure the strength of selective forces affecting the benthic-limnetic divergence in Lake Apoyo (as described in Kautt, Machado-Schiaffino, Torres-Dowdall, et al., 2016) or the effect of performance on (ideally, lifetime, see Arnold, 1983) fitness in the field as these species are endemic to an habitat that is not easily accessible for detailed, long-term observations or experiments in large sample sizes. Nonetheless, in line with earlier findings (Barluenga & Meyer, 2010; Barluenga et al., 2006; Elmer et al., 2014, 2010; Franchini, Fruciano, Frickey, et al., 2014; Franchini, Fruciano, Spreitzer, et al., 2014; Fruciano et al., 2016; Kautt, Machado-Schiaffino, & Meyer, 2016; Meyer, 1990; Stauffer et al., 2008), this study provides indirect empirical support for strong ecologically-based disruptive selection, probably associated with competition and performance trade-offs leading to habitat specialization in Lake Apoyo (Figure 5).

In conclusion, ecologically-based divergent selection on swimming performance and oxygen metabolism and trade-offs in key ecological traits, together with other mechanisms such as genomic linkage, habitat preferences and assortative mating (Barluenga et al., 2006; Baylis, 1976; Elmer et al., 2010, 2014; Franchini, Fruciano, Spreitzer, et al., 2014; Fruciano et al., 2016; Kautt, Machado-Schiaffino, Torres-Dowdall, et al., 2016; Stauffer et al., 2008), indeed probably promoted differentiation in this sympatric Midas cichlid species pair in Lake Apoyo. Future studies replicating our integrated experimental design in other families of the same species pair or sympatric species pairs, such as *Amphilophus amarillo* and *Amphilophus sagittae* in the Nicaraguan crater Lake Xiloá, will further clarify the processes enabling divergence despite gene flow in these cichlid fishes as well as other iconic occurrences of sympatric ecological speciation.

ACKNOWLEDGEMENTS

We thank Kathryn Elmer and Topi Lehtonen for helping to collect specimens in 2007 in the field with A.M. with permits and approval of MARENA, Nicaragua. We are grateful to Marc Stift for support in statistical analysis, Carmelo Fruciano, other Meyer laboratory members and two anonymous reviewers for their

helpful suggestions. F.R. was funded by a grant from the Deutsche Forschungsgemeinschaft ME 2848-1-1 to A.M., the International Max Planck Research School (IMPRS) for Organismal Biology and the Zukunftskolleg of the University of Konstanz. R.F.S. was funded by the Deutsche Forschungsgemeinschaft grant ME 1725/20-1 to A.M. P.F. is funded by grant of the Deutsche Forschungsgemeinschaft grant FR 3399/1-1. Funding for this project came from the European Research Council advanced grant (ERC “GenAdap” 293700) to A.M., a grant by the IMPRS to F.R., and the University of Konstanz Reinvestitionsprogramm grant to F.R., and A.M.

AUTHOR CONTRIBUTIONS

F.R., R.F.S., P.F., and A.M. designed the study. F.R., and A.M. obtained the necessary grants, equipment and permissions. F.R. assembled the swimming tunnel system and optimized swimming performance protocols. Swimming performance data was collected by F.R., and analyzed by F.R., and R.F.S. Morphological data was collected by F.R., and R.F.S., and analyzed by R.F.S., and F.R. Transcriptome data was collected and analyzed by R.F.S., and P.F. A.F.K. provided the annotation for the transcriptomes. F.R., and R.F.S. drafted the manuscript. All authors revised and agreed to the manuscript.

ORCID

Francesca Raffini  <https://orcid.org/0000-0002-7462-5922>
 Ralf F. Schneider  <https://orcid.org/0000-0001-6015-7219>
 Paolo Franchini  <https://orcid.org/0000-0002-8184-1463>
 Andreas F. Kautt  <https://orcid.org/0000-0001-7792-0735>
 Axel Meyer  <https://orcid.org/0000-0002-0888-8193>

DATA AVAILABILITY STATEMENT

Initial linear morphological measurements (individual body standard length, body height, body width, wet mass), geometric morphometric coordinates (raw and processed), swimming performance data for each individual and oxygen consumptions during the critical swimming speed and rest tests have been archived in Dryad (<https://doi.org/10.5061/dryad.j0zpc8692>). The gene expression values (counts & TPM) for both gill and muscle samples as well as candidate gene lists are available in the Data S1. Raw Illumina sequences have been deposited into the NCBI's Sequence Read Archive (SRA) database with accession numbers PRJNA576355.

REFERENCES

- Abbott, M., & Volkoff, H. (2011). Thyrotropin Releasing Hormone (TRH) in goldfish (*Carassius auratus*): Role in the regulation of feeding and locomotor behaviors and interactions with the orexin system and cocaine- and amphetamine regulated transcript (CART). *Hormones and Behavior*, 59(2), 236–245. <https://doi.org/10.1016/j.yhbeh.2010.12.008>
- Adams, D., Collyer, M., Kaliontzopoulou, A., & Sherratt, E. (2017). *Geomorph: Software for geometric morphometric analyses (Version 3.0.5)*. Available at The Comprehensive R Archive Network (CRAN). Retrieved from <https://cran.r-project.org/package=geomorph>
- Arnold, S. J. (1983). Morphology, performance and fitness. *American Zoologist*, 23(2), 347–361. <https://doi.org/10.1093/icb/23.2.347>

- Aronson, D., Violan, M. A., Dufresne, S. D., Zangen, D., Fielding, R. A., & Goodyear, L. J. (1997). Exercise stimulates the mitogen-activated protein kinase pathway in human skeletal muscle. *The Journal of Clinical Investigation*, 99(6), 1251–1257. <https://doi.org/10.1172/JCI119282>
- Barlow, G. W., & Munsey, J. W. (1976). The red devil-Midas-arrow cichlid species complex in Nicaragua. In B. Thorson (Ed.), *Investigations of the Ichthyofauna of Nicaraguan Lakes* (pp. 333–358). Lincoln, NE: University of Nebraska Press.
- Barlow, G. W., & Siri, P. (1997). Does sexual selection account for the conspicuous head dimorphism in the Midas cichlid? *Animal Behaviour*, 53(3), 573–584. <https://doi.org/10.1006/anbe.1996.0332>
- Barluenga, M., & Meyer, A. (2010). Phylogeography, colonization and population history of the Midas cichlid species complex (*Amphilophus* spp.) in the Nicaraguan crater lakes. *BMC Evolutionary Biology*, 10(1), 326. <https://doi.org/10.1186/1471-2148-10-326>
- Barluenga, M., Stölting, K. N., Salzburger, W., Muschick, M., & Meyer, A. (2006). Sympatric speciation in Nicaraguan crater lake cichlid fish. *Nature*, 439(7077), 719–723.
- Bay, R. A., Arnegard, M. E., Conte, G. L., Best, J., Bedford, N. L., McCann, S. R., ... Peichel, C. L. (2017). Genetic coupling of female mate choice with polygenic ecological divergence facilitates stickleback speciation. *Current Biology*, 27(21), 3344–3349.e3344. <https://doi.org/10.1016/j.cub.2017.09.037>
- Baylis, J. R. (1976). A quantitative study of long-term courtship: I. Ethological isolation between sympatric populations of the Midas cichlid, *Cichlasoma citrinellum*, and the arrow cichlid, *C. zaliosum*. *Behaviour*, 59(1), 59–69.
- Bird, C. E., Fernandez-Silva, I., Skillings, D. J., & Toonen, R. J. (2012). Sympatric speciation in the post “modern synthesis” era of evolutionary biology. *Evolutionary Biology*, 39(2), 158–180. <https://doi.org/10.1007/s11692-012-9183-6>
- Bolnick, D. I. (2011). Sympatric speciation in threespine stickleback: Why not? *International Journal of Ecology*, 2011, 1–15. <https://doi.org/10.1155/2011/942847>
- Bolnick, D. I., & Fitzpatrick, B. M. (2007). Sympatric speciation: Models and empirical evidence. *Annual Review of Ecology, Evolution, and Systematics*, 38, 459–487. <https://doi.org/10.1146/annurev.ecolsys.38.091206.095804>
- Brett, J. (1964). The respiratory metabolism and swimming performance of young sockeye salmon. *Journal of the Fisheries Board of Canada*, 21(5), 1183–1226. <https://doi.org/10.1139/f64-103>
- Bussmann, J., Wolfe, S. A., & Siekmann, A. F. (2011). Arterial-venous network formation during brain vascularization involves hemodynamic regulation of chemokine signaling. *Development*, 138(9), 1717–1726. <https://doi.org/10.1242/dev.059881>
- Camps, M., Nichols, A., & Arkininstall, S. (2000). Dual specificity phosphatases: A gene family for control of MAP kinase function. *The FASEB Journal*, 14(1), 6–16. <https://doi.org/10.1096/fasebj.14.1.6>
- Chapman, L., Galis, F., & Shinn, J. (2000). Phenotypic plasticity and the possible role of genetic assimilation: Hypoxia-induced trade-offs in the morphological traits of an African cichlid. *Ecology Letters*, 3(5), 387–393. <https://doi.org/10.1046/j.1461-0248.2000.00160.x>
- Coyne, J. A. (2007). Sympatric speciation. *Current Biology*, 17(18), 787–788. <https://doi.org/10.1016/j.cub.2007.06.056>
- Crespel, A., Dupont-Prinet, A., Bernatchez, L., Claireaux, G., Tremblay, R., & Audet, C. (2017). Divergence in physiological factors affecting swimming performance between anadromous and resident populations of brook charr *Salvelinus fontinalis*. *Journal of Fish Biology*, 90(5), 2170–2193.
- Dalziel, A. C., Rogers, S. M., & Schulte, P. M. (2009). Linking genotypes to phenotypes and fitness: How mechanistic biology can inform molecular ecology. *Molecular Ecology*, 18(24), 4997–5017. <https://doi.org/10.1111/j.1365-294X.2009.04427.x>
- Dean, A. M., & Thornton, J. W. (2007). Mechanistic approaches to the study of evolution: The functional synthesis. *Nature Reviews Genetics*, 8(9), 675. <https://doi.org/10.1038/nrg2160>
- Doenz, C. J., Bittner, D., Vonlanthen, P., Wagner, C. E., & Seehausen, O. (2018). Rapid buildup of sympatric species diversity in Alpine whitefish. *Ecology and Evolution*, 8(18), 9398–9412. <https://doi.org/10.1002/ece3.4375>
- Ellerby, D. J., & Gerry, S. P. (2011). Sympatric divergence and performance trade-offs of bluegill ecomorphs. *Evolutionary Biology*, 38(4), 422–433. <https://doi.org/10.1007/s11692-011-9130-y>
- Elmer, K. R., Fan, S., Kusche, H., Spreitzer, M. L., Kautt, A. F., Franchini, P., & Meyer, A. (2014). Parallel evolution of Nicaraguan crater lake cichlid fishes via non-parallel routes. *Nature Communications*, 5, 5168. <https://doi.org/10.1038/ncomms6168>
- Elmer, K. R., Kusche, H., Lehtonen, T. K., & Meyer, A. (2010). Local variation and parallel evolution: Morphological and genetic diversity across a species complex of neotropical crater lake cichlid fishes. *Philosophical Transactions of the Royal Society of London B: Biological Sciences*, 365(1547), 1763–1782.
- Filchak, K. E., Roethele, J. B., & Feder, J. L. (2000). Natural selection and sympatric divergence in the apple maggot *Rhagoletis pomonella*. *Nature*, 407(6805), 739. <https://doi.org/10.1038/35037578>
- Fitzpatrick, B. M., Fordyce, J., & Gavrillets, S. (2008). What, if anything, is sympatric speciation? *Journal of Evolutionary Biology*, 21(6), 1452–1459. <https://doi.org/10.1111/j.1420-9101.2008.01611.x>
- Foote, A. D. (2018). Sympatric speciation in the genomic era. *Trends in Ecology & Evolution*, 33(2), 85–95. <https://doi.org/10.1016/j.tree.2017.11.003>
- Franchini, P., Fruciano, C., Frickey, T., Jones, J. C., & Meyer, A. (2014). The gut microbial community of Midas cichlid fish in repeatedly evolved limnetic-benthic species pairs. *PLoS ONE*, 9(4), e95027. <https://doi.org/10.1371/journal.pone.0095027>
- Franchini, P., Fruciano, C., Spreitzer, M. L., Jones, J. C., Elmer, K. R., Henning, F., & Meyer, A. (2014). Genomic architecture of ecologically divergent body shape in a pair of sympatric crater lake cichlid fishes. *Molecular Ecology*, 23(7), 1828–1845. <https://doi.org/10.1111/mec.12590>
- Fruciano, C., Franchini, P., Kovacova, V., Elmer, K. R., Henning, F., & Meyer, A. (2016). Genetic linkage of distinct adaptive traits in sympatrically speciating crater lake cichlid fish. *Nature Communications*, 7, 12736. <https://doi.org/10.1038/ncomms12736>
- Gavrillets, S. (2004). *Fitness landscapes and the origin of species* (Vol. 41). Princeton, NJ: Princeton University Press.
- Gavrillets, S., Vose, A., Barluenga, M., Salzburger, W., & Meyer, A. (2007). Case studies and mathematical models of ecological speciation. 1. Cichlids in a crater lake. *Molecular Ecology*, 16(14), 2893–2909. <https://doi.org/10.1111/j.1365-294X.2007.03305.x>
- Guha, P. (1995). Exploring ecological control of Chara. *Crop Protection*, 14(6), 527–528. [https://doi.org/10.1016/0261-2194\(95\)00003-5](https://doi.org/10.1016/0261-2194(95)00003-5)
- Hammer, C. (1995). Fatigue and exercise tests with fish. *Comparative Biochemistry and Physiology Part A: Physiology*, 112(1), 1–20. [https://doi.org/10.1016/0300-9629\(95\)00060-K](https://doi.org/10.1016/0300-9629(95)00060-K)
- Hendry, A., Hudson, K., Walker, J., Räsänen, K., & Chapman, L. (2011). Genetic divergence in morphology–performance mapping between Misty Lake and inlet stickleback. *Journal of Evolutionary Biology*, 24(1), 23–35. <https://doi.org/10.1111/j.1420-9101.2010.02155.x>
- Henning, F., & Meyer, A. (2014). The evolutionary genomics of cichlid fishes: Explosive speciation and adaptation in the postgenomic era. *Annual Review of Genomics and Human Genetics*, 15, 417–441. <https://doi.org/10.1146/annurev-genom-090413-025412>
- Higham, T. E., Rogers, S. M., Langerhans, R. B., Jamniczky, H. A., Lauder, G. V., Stewart, W. J., ... Reznick, D. N. (2016). Speciation through the lens of biomechanics: Locomotion, prey capture and reproductive isolation. *Proceedings of the Royal Society B: Biological Sciences*, 283(1838), 20161294.

- Hoerner, S. F. (Ed.) (1965). *Fluid-dynamic, drag*. Midland Park, NJ: Published by and available from the author.
- Hollander, J., Fiebig, R., Gore, M., Ookawara, T., Ohno, H., & Ji, L. (2001). Superoxide dismutase gene expression is activated by a single bout of exercise in rat skeletal muscle. *Pflügers Archiv*, 442(3), 426–434. <https://doi.org/10.1007/s004240100539>
- Hyndman, K. A., & Evans, D. H. (2007). Endothelin and endothelin converting enzyme-1 in the fish gill: Evolutionary and physiological perspectives. *Journal of Experimental Biology*, 210(24), 4286–4297. <https://doi.org/10.1242/jeb.009969>
- Kautt, A. F., Machado-Schiaffino, G., & Meyer, A. (2016). Multispecies outcomes of sympatric speciation after admixture with the source population in two radiations of Nicaraguan crater lake cichlids. *PLoS Genetics*, 12(6), e1006157. <https://doi.org/10.1371/journal.pgen.1006157>
- Kautt, A. F., Machado-Schiaffino, G., & Meyer, A. (2018). Lessons from a natural experiment: Allopatric morphological divergence and sympatric diversification in the Midas cichlid species complex are largely influenced by ecology in a deterministic way. *Evolution Letters*, 2(4), 323–340. <https://doi.org/10.1002/evl3.64>
- Kautt, A. F., Machado-Schiaffino, G., Torres-Dowdall, J., & Meyer, A. (2016). Incipient sympatric speciation in Midas cichlid fish from the youngest and one of the smallest crater lakes in Nicaragua due to differential use of the benthic and limnetic habitats? *Ecology and Evolution*, 6(15), 5342–5357. <https://doi.org/10.1002/ece3.2287>
- Kearsey, S. E., & Labib, K. (1998). MCM proteins: Evolution, properties, and role in DNA replication. *Biochimica Et Biophysica Acta (BBA) – Gene Structure and Expression*, 1398(2), 113–136. [https://doi.org/10.1016/S0167-4781\(98\)00033-5](https://doi.org/10.1016/S0167-4781(98)00033-5)
- Killen, S. S., Glazier, D. S., Rezende, E. L., Clark, T. D., Atkinson, D., Willener, A. S., ... Bronstein, J. L. (2016). Ecological influences and morphological correlates of resting and maximal metabolic rates across teleost fish species. *The American Naturalist*, 187(5), 592–606. <https://doi.org/10.1086/685893>
- Kutterolf, S., Freundt, A., Perez, W., Wehrmann, H., & Schmincke, H.-U. (2007). Late Pleistocene to Holocene temporal succession and magnitudes of highly-explosive volcanic eruptions in west-central Nicaragua. *Journal of Volcanology and Geothermal Research*, 163(1), 55–82. <https://doi.org/10.1016/j.jvolgeores.2007.02.006>
- Kwan, W., Cortes, M., Frost, I., Esain, V., Theodore, L. N., Liu, S. Y., ... North, T. E. (2016). The Central nervous system regulation of embryonic HSPC production via stress-responsive glucocorticoid receptor signaling. *Cell Stem Cell*, 19(3), 370–382. <https://doi.org/10.1016/j.stem.2016.06.004>
- Langerhans, R. B. (2009). Morphology, performance, fitness: Functional insight into a post-Pleistocene radiation of mosquitofish. *Biology Letters*, 5(4), 488–491. <https://doi.org/10.1098/rsbl.2009.0179>
- Langerhans, R. B., Gifford, M. E., & Joseph, E. O. (2007). Ecological speciation in Gambusia fishes. *Evolution*, 61(9), 2056–2074. <https://doi.org/10.1111/j.1558-5646.2007.00171.x>
- Langerhans, R. B., & Reznick, D. N. (2010). Ecology and evolution of swimming performance in fishes: Predicting evolution with biomechanics. *Fish Locomotion: An Eco-Ethological Perspective*, 220, 248.
- Law, T., & Blake, R. (1996). Comparison of the fast-start performances of closely related, morphologically distinct threespine sticklebacks (*Gasterosteus* spp.). *Journal of Experimental Biology*, 199(12), 2595–2604.
- Levene, H. (1960). Robust tests for equality of variances. *Contributions to Probability and Statistics*, 1, 278–292.
- Levin, M., Klar, A. J., & Ramsdell, A. F. (2016). Introduction to provocative questions in left–right asymmetry. *Philosophical Transactions of the Royal Society B: Biological Sciences*, 371(1710), 20150399. <https://doi.org/10.1098/rstb.2015.0399>
- Magnoni, L. J., Crespo, D., Ibarz, A., Blasco, J., Fernández-Borrás, J., & Planas, J. V. (2013). Effects of sustained swimming on the red and white muscle transcriptome of rainbow trout (*Oncorhynchus mykiss*) fed a carbohydrate-rich diet. *Comparative Biochemistry and Physiology Part A: Molecular & Integrative Physiology*, 166(3), 510–521. <https://doi.org/10.1016/j.cbpa.2013.08.005>
- Malerød, L., Stuffers, S., Brech, A., & Stenmark, H. J. T. (2007). Vps22/EAP30 in ESCRT-II mediates endosomal sorting of growth factor and chemokine receptors destined for lysosomal degradation. *Traffic*, 8(11), 1617–1629. <https://doi.org/10.1111/j.1600-0854.2007.00630.x>
- Marhin, W. W., Chen, S., Facchini, L. M., Fornace, A. J., Jr, & Penn, L. Z. (1997). Myc represses the growth arrest gene gadd45. *Oncogene*, 14(23), 2825. <https://doi.org/10.1038/sj.onc.1201138>
- Masel, J., & Promislow, D. E. (2016). Answering evolutionary questions: A guide for mechanistic biologists. *BioEssays*, 38(7), 704–711. <https://doi.org/10.1002/bies.201600029>
- McCubrey, J. A., LaHair, M. M., & Franklin, R. A. (2006). Reactive oxygen species-induced activation of the MAP kinase signaling pathways. *Antioxidants & Redox Signaling*, 8(9–10), 1775–1789. <https://doi.org/10.1089/ars.2006.8.1775>
- McDonnell, L. H., & Chapman, L. J. (2016). Effects of thermal increase on aerobic capacity and swim performance in a tropical inland fish. *Comparative Biochemistry and Physiology Part A: Molecular & Integrative Physiology*, 199, 62–70. <https://doi.org/10.1016/j.cbpa.2016.05.018>
- Meyer, A. (1989). Cost of morphological specialization: Feeding performance of the two morphs in the trophically polymorphic cichlid fish, *Cichlasoma citrinellum*. *Oecologia*, 80(3), 431–436. <https://doi.org/10.1007/BF00379047>
- Meyer, A. (1990). Morphometrics and allometry in the trophically polymorphic cichlid fish, *Cichlasoma citrinellum*: Alternative adaptations and ontogenetic changes in shape. *Journal of Zoology*, 221(2), 237–260.
- Nosil, P. (2007). Divergent host plant adaptation and reproductive isolation between ecotypes of *Timema cristinae* walking sticks. *The American Naturalist*, 169(2), 151–162.
- Palstra, A. P., Beltran, S., Burgerhout, E., Brittin, S. A., Magnoni, L. J., Henkel, C. V., ... Planas, J. V. (2013). Deep RNA sequencing of the skeletal muscle transcriptome in swimming fish. *PLoS ONE*, 8(1), e53171. <https://doi.org/10.1371/journal.pone.0053171>
- Peake, S., & Farrell, A. (2006). Fatigue is a behavioural response in respirometer-confined smallmouth bass. *Journal of Fish Biology*, 68(6), 1742–1755. <https://doi.org/10.1111/j.0022-1112.2006.01052.x>
- Recknagel, H., Elmer, K. R., & Meyer, A. (2014). Crater lake habitat predicts morphological diversity in adaptive radiations of cichlid fishes. *Evolution*, 68(7), 2145–2155. <https://doi.org/10.1111/evo.12412>
- Reidy, S., Nelson, J., Tang, Y., & Kerr, S. (1995). Post-exercise metabolic rate in Atlantic cod and its dependence upon the method of exhaustion. *Journal of Fish Biology*, 47(3), 377–386. <https://doi.org/10.1111/j.1095-8649.1995.tb01907.x>
- Richards, E. J., Servedio, M. R., & Martin, C. H. (2019). Searching for sympatric speciation in the genomic era. *BioEssays*, 41(7), 1900047. <https://doi.org/10.1002/bies.201900047>
- Rolán-Alvarez, E. (2007). Sympatric speciation as a by-product of ecological adaptation in the Galician *Littorina saxatilis* hybrid zone. *Journal of Molluscan Studies*, 73(1), 1–10. <https://doi.org/10.1093/mollus/eyl023>
- Rouleau, S., Glémet, H., & Magnan, P. (2010). Effects of morphology on swimming performance in wild and laboratory crosses of brook trout ecotypes. *Functional Ecology*, 24(2), 310–321. <https://doi.org/10.1111/j.1365-2435.2009.01636.x>
- Salzburger, W. (2009). The interaction of sexually and naturally selected traits in the adaptive radiations of cichlid fishes. *Molecular Ecology*, 18(2), 169–185. <https://doi.org/10.1111/j.1365-294X.2008.03981.x>
- Savolainen, V., Anstett, M.-C., Lexer, C., Hutton, I., Clarkson, J. J., Norup, M. V., ... Baker, W. J. (2006). Sympatric speciation in palms on an oceanic island. *Nature*, 441(7090), 210. <https://doi.org/10.1038/nature04566>

- Schluter, D. (1993). Adaptive radiation in sticklebacks: Size, shape, and habitat use efficiency. *Ecology*, 74(3), 699–709. <https://doi.org/10.2307/1940797>
- Schluter, D., & McPhail, J. D. (1992). Ecological character displacement and speciation in sticklebacks. *The American Naturalist*, 140(1), 85–108. <https://doi.org/10.1086/285404>
- Seehausen, O. (2006). African cichlid fish: a model system in adaptive radiation research. *Proceedings of the Royal Society of London B: Biological Sciences*, 273(1597), 1987–1998.
- Seger, R., & Krebs, E. G. (1995). The MAPK signaling cascade. *The FASEB Journal*, 9(9), 726–735. <https://doi.org/10.1096/fasebj.9.9.7601337>
- Shapiro, S. S., & Wilk, M. B. (1965). An analysis of variance test for normality (complete samples). *Biometrika*, 52(3–4), 591–611. <https://doi.org/10.1093/biomet/52.3-4.591>
- Smadja, C. M., & Butlin, R. K. (2011). A framework for comparing processes of speciation in the presence of gene flow. *Molecular Ecology*, 20(24), 5123–5140. <https://doi.org/10.1111/j.1365-294X.2011.05350.x>
- Stauffer, J. R., McCrary, J. K., & Black, K. E. (2008). Three new species of cichlid fishes (Teleostei: Cichlidae) from Lake Apoyo, Nicaragua. *Proceedings of the Biological Society of Washington*, 121(1), 117–129. <https://doi.org/10.2988/06-37.1>
- Szklarczyk, D., Gable, A. L., Lyon, D., Junge, A., Wyder, S., Huerta-Cepas, J., ... Bork, P. (2018). STRING v11: Protein–protein association networks with increased coverage, supporting functional discovery in genome-wide experimental datasets. *Nucleic Acids Research*, 47(D1), D607–D613.
- Torres-Dowdall, J., & Meyer, A. (2019). Sympatric and allopatric diversification in the adaptive radiation of Midas cichlids in Nicaraguan lakes. In M. E. Abate & D. L. G. Noakes (Eds.), *The behavior, ecology and evolution of cichlid fishes*. *Fish and Fisheries Series*. Springer Nature. In Press.
- Van Wassenbergh, S., Potes, N. Z., & Adriaens, D. (2015). Hydrodynamic drag constrains head enlargement for mouthbrooding in cichlids. *Journal of the Royal Society Interface*, 12(109), 20150461. <https://doi.org/10.1098/rsif.2015.0461>
- Venables, W., & Ripley, B. (2002). *Modern applied statistics with S* (Vol. 4). New York, NY: Springer.
- Videler, J. J. (2012). *Fish swimming*. Dordrecht, Netherlands: Springer Science & Business Media.
- Webb, P. (1975). Hydrodynamics and energetics of fish propulsion. *Bulletin of the Fisheries Research Board of Canada*, 190, 1–159.
- Webb, P. (1984a). Body form, locomotion and foraging in aquatic vertebrates. *American Zoologist*, 24(1), 107–120. <https://doi.org/10.1093/icb/24.1.107>
- Webb, P. W. (1984b). Form and function in fish swimming. *Scientific American*, 251(1), 72–82. <https://doi.org/10.1038/scientificamerican0784-72>
- Yeghiayan, P., Tu, J., Vallier, L. G., & Carlson, M. (1995). Molecular analysis of the SNF8 gene of *Saccharomyces cerevisiae*. *Yeast*, 11(3), 219–224. <https://doi.org/10.1002/yea.320110304>
- Zahavi, A. (1975). Mate selection—A selection for a handicap. *Journal of Theoretical Biology*, 53(1), 205–214. [https://doi.org/10.1016/0022-5193\(75\)90111-3](https://doi.org/10.1016/0022-5193(75)90111-3)
- Zhou, L.-Z.-H., Johnson, A. P., & Rando, T. A. (2001). NFκB and AP-1 mediate transcriptional responses to oxidative stress in skeletal muscle cells. *Free Radical Biology and Medicine*, 31(11), 1405–1416. [https://doi.org/10.1016/S0891-5849\(01\)00719-5](https://doi.org/10.1016/S0891-5849(01)00719-5)

SUPPORTING INFORMATION

Additional supporting information may be found online in the Supporting Information section.

How to cite this article: Raffini F, Schneider RF, Franchini P, Kautt AF, Meyer A. Diving into divergence: Differentiation in swimming performances, physiology and gene expression between locally-adapted sympatric cichlid fishes. *Mol Ecol*. 2020;29:1219–1234. <https://doi.org/10.1111/mec.15304>