





RESEARCH ARTICLE

Open Access



Nitrogen fixation by diverse diazotrophic communities can support population growth of arboreal ants

Maximilian Nepel^{1,2*} , Josephine Pfeifer², Felix B. Oberhauser^{1,3} , Andreas Richter² ,
Dagmar Woebken^{2*}  and Veronika E. Mayer¹ 

Abstract

Background: Symbiotic ant-plant associations, in which ants live on plants, feed on plant-provided food, and protect host trees against threats, are ubiquitous across the tropics, with the *Azteca-Cecropia* associations being amongst the most widespread interactions in the Neotropics. Upon colonization of *Cecropia*'s hollow internodes, *Azteca* queens form small patches with plant parenchyma, which are then used as waste piles when the colony grows. Patches—found in many ant-plant mutualisms—are present throughout the colony life cycle and may supplement larval food. Despite their initial nitrogen (N)-poor substrate, patches in *Cecropia* accommodate fungi, nematodes, and bacteria. In this study, we investigated the atmospheric N₂ fixation as an N source in patches of early and established ant colonies.

Results: Via ¹⁵N₂ tracer assays, N₂ fixation was frequently detected in all investigated patch types formed by three *Azteca* ant species. Quantified fixation rates were similar in early and established ant colonies and higher than in various tropical habitats. Based on amplicon sequencing, the identified microbial functional guild—the diazotrophs—harboring and transcribing the dinitrogenase reductase (*nifH*) gene was highly diverse and heterogeneous across *Azteca* colonies. The community composition differed between early and established ant colonies and partly between the ant species.

Conclusions: Our data show that N₂ fixation can result in reasonable amounts of N in ant colonies, which might not only enable bacterial, fungal, and nematode growth in the patch ecosystems but according to our calculations can even support the growth of ant populations. The diverse and heterogeneous diazotrophic community implies a functional redundancy, which could provide the ant-plant-patch system with a higher resilience towards changing environmental conditions. Hence, we propose that N₂ fixation represents a previously unknown potential to overcome N limitations in arboreal ant colonies.

Keywords: Ant-plant interaction, *Azteca* ant, *Cecropia* plant, Microbial patch, Diazotrophy, ¹⁵N₂ tracer assay, *nifH* gene sequencing

*Correspondence: maximilian.nepel@univie.ac.at; dagmar.woebken@univie.ac.at

¹ Department of Botany and Biodiversity Research, University of Vienna, Vienna, Austria

² Department of Microbiology and Ecosystem Science, Centre for Microbiology and Environmental Systems Science, University of Vienna, Vienna, Austria

Full list of author information is available at the end of the article

Background

The parallel rise and diversification of ants and plants have favored intimate ant-plant associations, many of which are mutually beneficial for both partners [1–3]. Loose associations between ants and plants, in which plants secrete small volumes of nectar from easily accessible organs outside the flowers (extrafloral nectaries), are widespread [4] and involve many different



© The Author(s) 2022. **Open Access** This article is licensed under a Creative Commons Attribution 4.0 International License, which permits use, sharing, adaptation, distribution and reproduction in any medium or format, as long as you give appropriate credit to the original author(s) and the source, provide a link to the Creative Commons licence, and indicate if changes were made. The images or other third party material in this article are included in the article's Creative Commons licence, unless indicated otherwise in a credit line to the material. If material is not included in the article's Creative Commons licence and your intended use is not permitted by statutory regulation or exceeds the permitted use, you will need to obtain permission directly from the copyright holder. To view a copy of this licence, visit <http://creativecommons.org/licenses/by/4.0/>. The Creative Commons Public Domain Dedication waiver (<http://creativecommons.org/publicdomain/zero/1.0/>) applies to the data made available in this article, unless otherwise stated in a credit line to the data.

species. Specialized ant-plant interactions are characterized by modified hollow plant structures for shelter—so called domatia—observed in around 700 vascular plant species [5]. Additionally, the plant is providing food in the form of extrafloral nectar [6] and/or protein and carbohydrate-rich food bodies [7–12]. In return, ants protect their host plants against herbivores, pathogens, and encroaching vegetation [13, 14], and the ant's wastes provide nutrients [15–19]. The extraordinary abundance of ants in the rainforest canopies and their N demand have been extensively discussed in the literature. Arboreal ants are able to adapt to resource imbalance due to N-poor food sources, e.g., through fueling foraging activities [20] or N-recycling and upgrading non-essential to essential amino acids via gut bacteria [21]. Additionally, biological N fixation (BNF), a process performed by certain bacteria and archaea (diazotrophs) that makes atmospheric N₂ biologically available, has been hypothesized to supply ants with N and facilitate their high abundance in the rainforest canopies [22]. Although potential diazotrophs were found in the gut of arboreal ants [23–25] and *Pseudomonas* bacteria isolated from an ant-plant association were shown to grow on N-free media [26], BNF activity associated with arboreal ants could not be shown yet [27].

One of the most widespread ant-plant mutualisms in the Neotropics is the *Azteca-Cecropia* interaction. Arboreal *Azteca* species (Dolichoderinae) spend their entire life in and on *Cecropia* (Urticaceae) trees [28, 29] and nest in the internodes of the hollow *Cecropia* stem while defending their host plant effectively against intruders [30–32]. As the ants do not leave the tree, they are solely reliant on host plant-located food sources, such as plant-provided food bodies and hemipteran honeydew. Like in many other ant-plant interactions across the tropics, well-defined, dark-colored “patches” built by the ants can be found in inhabited domatia [33–36]. The first patch is initialized by the foundress queen right after colonization [37]. As the plant grows and the colony size increases, the worker ants enlarge the nesting space by colonizing additional internodes and form further patches throughout the whole nesting space of an established *Azteca* ant colony [38]. The patches contain numerous bacteria (pers. observation and Fukuda et al. [26]), nematodes [39, 40], and ascomycete fungi [37, 38], which are likely transmitted vertically from the mother colony [37] and might serve as food [35]. Several observations suggest that these patches are essential to ant colonies in the *Azteca-Cecropia* association: (i) the colony-founding (“foundress”) queen inoculates a small pile of scratched-off plant tissue (parenchyma) from the domatia walls with a cocktail of introduced patch organisms before laying eggs and (ii)

the larval food in the early colony stage seems to be supplemented with patch material [37].

As the initial patch substrate is parenchyma, which is rich in carbon (C) but low in nitrogen (N), additional N might be needed to support the initial growth of the patch organisms. Upon entering, *Azteca* foundress queens seal the domatium and raise their first brood in isolation (claustral colony founding) by metabolizing their own internal nutritional reserves [41]. Besides defecation onto the patch by the queen, potential N sources are limited; yet, an alternative and potentially unlimited N source could be BNF.

The notable biomass of diverse patch organisms despite low N content of the initial parenchyma substrate leads to the hypothesis that (I) C-dominated patches of foundress queens are supplemented with N by BNF. Due to N-containing organic waste that *Azteca* worker ants frequently deposit (pers. observation), we hypothesize that (II) BNF is less prevalent in patches of established ant colonies than in more recently founded colonies. As these ant-maintained patches are supposedly essential for colony development and patch particles are transmitted vertically [37], we further hypothesize that (III) the diazotrophic community compositions in early and established ant colonies are tightly associated with the ant species and therefore vary little across colonies of the same ant species. Accordingly, we also expect that (IV) the *nifH*-transcribing community is dominated by a few specialized taxa.

Our study assesses the significance of BNF in this mutualistic ant-plant association by quantifying N₂ fixation activity in patches of different *Azteca* species and colony ages. Additionally, we identify potential diazotrophs in this system by analyzing the marker gene and transcripts for N₂ fixation, the dinitrogenase reductase (*nifH*) [42, 43].

Results

N₂ fixation activity detected in all investigated patch types

In order to evaluate the N₂-fixing capability in the ant-plant *Cecropia*, we collected plant parenchyma, early patches built by foundress queens of the genus *Azteca* (“initial patch” (IP); Fig. 1a) and patch material from established *Azteca* colonies formed and maintained by worker ants (“established patch” (EP); Fig. 1b, c). Parenchyma and patches of three different *Azteca* species were incubated for 72 h in an artificial ¹⁵N₂:O₂ atmosphere, and subsequently, the ¹⁵N/¹⁴N isotopic ratios were determined. We found that ¹⁵N atom percent excess (APE) in patches was significantly higher than that in the parenchyma (Pa) from the walls of uncolonized plant internodes, in which ¹⁵N enrichment was not detectable (Pa vs. IP and Pa vs. EP: both *P* < 0.001; IP vs. EP: *P* = 0.118;

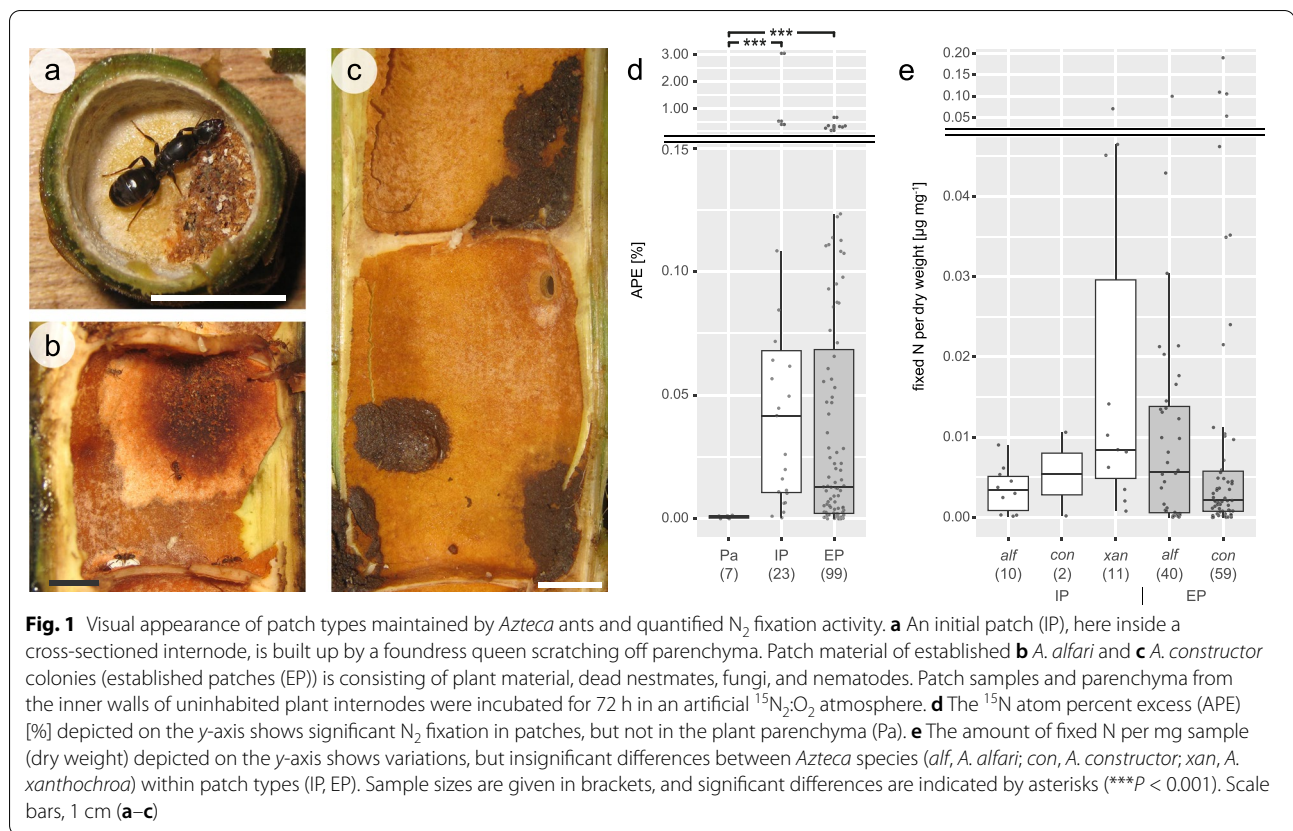


Fig. 1d). In IPs, 0.011 µg N mg⁻¹ dry weight (dw) was fixed on average, with a maximum of 0.068 µg N mg⁻¹ dw. In EPs, 0.012 µg N mg⁻¹ dw was fixed on average with a maximum of 0.189 µg N mg⁻¹ dw. The quantity of fixed N did not vary significantly across ant species and patch types (between patch types: *P* = 0.28; between ant species within patch types: IP: *P* = 0.07; EP: *P* = 0.23; Fig. 1e). The overall mean BNF rate measured in *Azteca*-made patches was 3.9 µg N g⁻¹ (dw) day⁻¹.

Azteca patches contain highly diverse diazotrophic communities

Aiming to assess the abundance of potential diazotrophs in patches of established colonies, we quantified the copy numbers of the functional marker gene for N₂

fixation (*nifH*) and the 16S rRNA gene by quantitative PCR (qPCR) assays. The average proportion of diazotrophic to total microbial copy numbers per ng DNA of EPs was 3.2% and reached up to 14.7%. The ratios and abundance measures varied insignificantly between ant species (*nifH*: *P* = 0.786; 16S rRNA: *P* = 0.120; ratio: *P* = 0.349; Table 1).

To examine the diazotrophic communities in both ant-built patch types (IP and EP), we sequenced the *nifH* gene using Illumina MiSeq and processed the raw amplicon reads using the bioinformatic pipeline NifMAP [44]. Our data revealed a high diversity of diazotrophs, with a total of 1147 operational taxonomic units (OTUs) spanning eleven different phyla, based on the classification of *nifH* amino acid sequences. Across all patch samples,

Table 1 Quantitative abundances of microbial 16S rRNA and *nifH* gene copies in patches of established *Azteca alfari* and *A. constructor* colonies. Ratio depicts the proportions of diazotrophs to total microorganisms (*nifH* gene to 16S rRNA gene copy number). Values are displayed as the mean with standard error (SE)

Ant species	<i>nifH</i> (copies ng ⁻¹ DNA)	SE	16S rRNA (copies ng ⁻¹ DNA)	SE	Ratio (%)	SE
<i>A. alfari</i>	3.40E+05	1.80E+05	2.50E+07	9.40E+06	2.8	1.38
<i>A. constructor</i>	1.30E+05	5.40E+04	5.00E+06	1.30E+06	3.6	0.95

most reads were assigned to *Proteobacteria* (on average 81.3% of reads per sample), followed by *Firmicutes* (7.2%), *Cyanobacteria* (6.0%), *Verrucomicrobia* (3.0%), and *Bacteroidetes* (2.1%). The most abundant orders were *Rhizobiales* (on average 30.8% of reads per sample, *Alphaproteobacteria*), *Enterobacterales* (17.8%, *Gammaproteobacteria*), and *Rhodocyclales* (14.7%, *Betaproteobacteria*), though each ranged from 0% to more than 90% of relative read abundance amongst patches of individual ant colonies (Fig. 2). In accordance with this revealed heterogeneity in relative read abundances of bacterial orders, only 16 of 1147 *nifH* OTUs could be detected in 75% of the samples and only 6 of 74 genera were ubiquitous, namely *Bradyrhizobium*, *Azorhizobium* and *Rhodopseudomonas* (all *Rhizobiales*), *Azospirillum* (*Rhodospirillales*), *Paraburkholderia* (*Burkholderiales*), and *Klebsiella* (*Enterobacterales*). Neither, a single OTU nor genus, accounted constantly for more than 0.5% of reads per sample.

Despite the variations in relative read abundances of bacterial orders within IPs and EPs (Fig. 2, Additional file 1: Table S1), we observed distinct patterns in the diazotrophic community composition. IPs were mostly dominated by one of the abovementioned abundant orders, or by *Nostocales* (*Cyanobacteria*), while in EPs, other additional orders were highly abundant in single samples, e.g., *Rhodospirillales* (*Alphaproteobacteria*) and *Clostridiales* (*Firmicutes*) (Additional file 1: Table S1). IPs

were overall significantly less diverse on the OTU level than EPs (Shannon index; on average: *A. alfari*, IP = 1.3, EP = 2.1, $P = 0.021$; *A. constr.*, IP = 1.9, EP = 2.9, $P = 0.012$; *A. xanthochroa*, IP = 1.2, Additional file 2: Fig. S1). The diazotrophic community composition of IPs and EPs displayed significant differences ($P < 0.001$, $R^2=0.083$), visible in the constrained ordination (Fig. 3a). This was also reflected within ant species (IP vs. EP: *A. alfari*, $P < 0.001$, $R^2 = 0.102$; *A. constr.*, $P < 0.001$, $R^2 = 0.079$). Of several established ant colonies, patch material was sampled from up to three different locations throughout the nesting space representing different patch ages. Young patches were taken from recently colonized new domatia that develop apically during plant growth, while older patch material was sampled from lower parts of the ant's nesting space. The position of the collected EPs within the plant, representing different patch age, did not affect the diazotrophic community composition ($P = 0.994$). Consistently, the EPs of the same ant colony harbored similar diazotrophic communities; thus, the most significant predictor for diazotroph community composition was the individual ant colony that inhabited one *Cecropia* tree ($P < 0.001$, $R^2 = 0.749$, Fig. 3b). The individual *Cecropia* tree played an insignificant role, as in *Cecropia* saplings with multiple independent colonization events, the IP community compositions did not correlate with the plant ID ($P = 0.084$). Within patch types, the ant species significantly correlated with the community composition

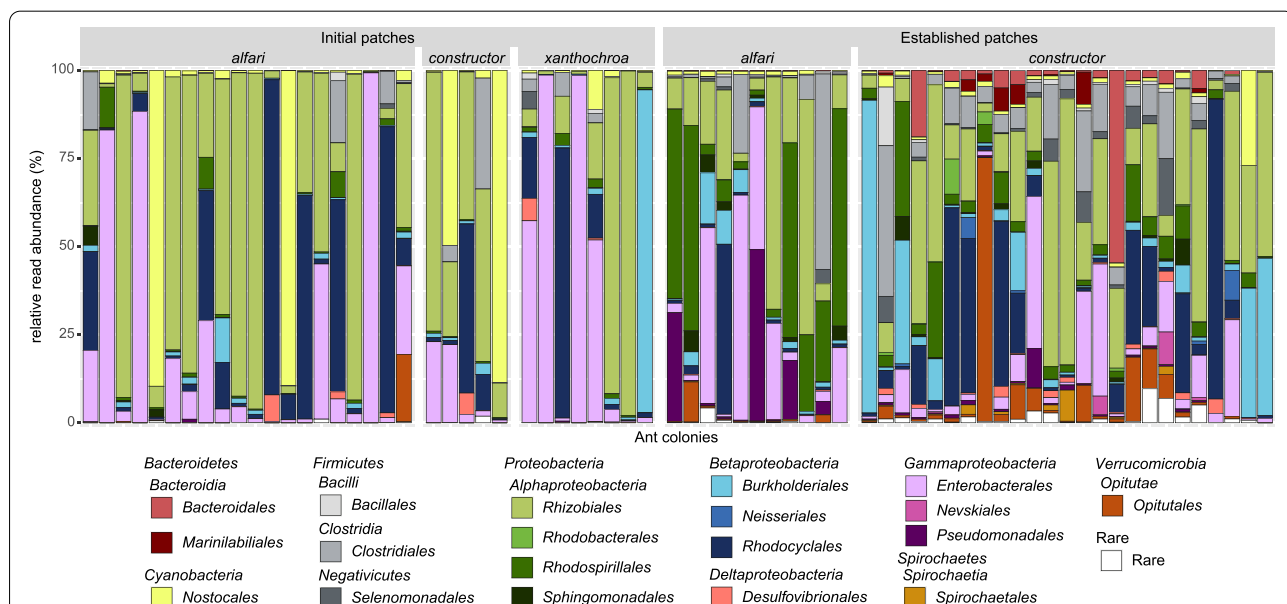
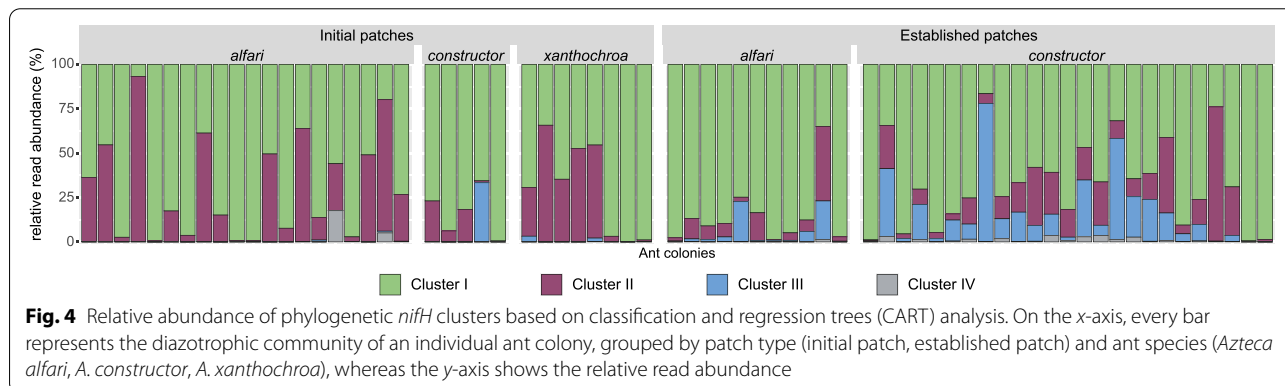
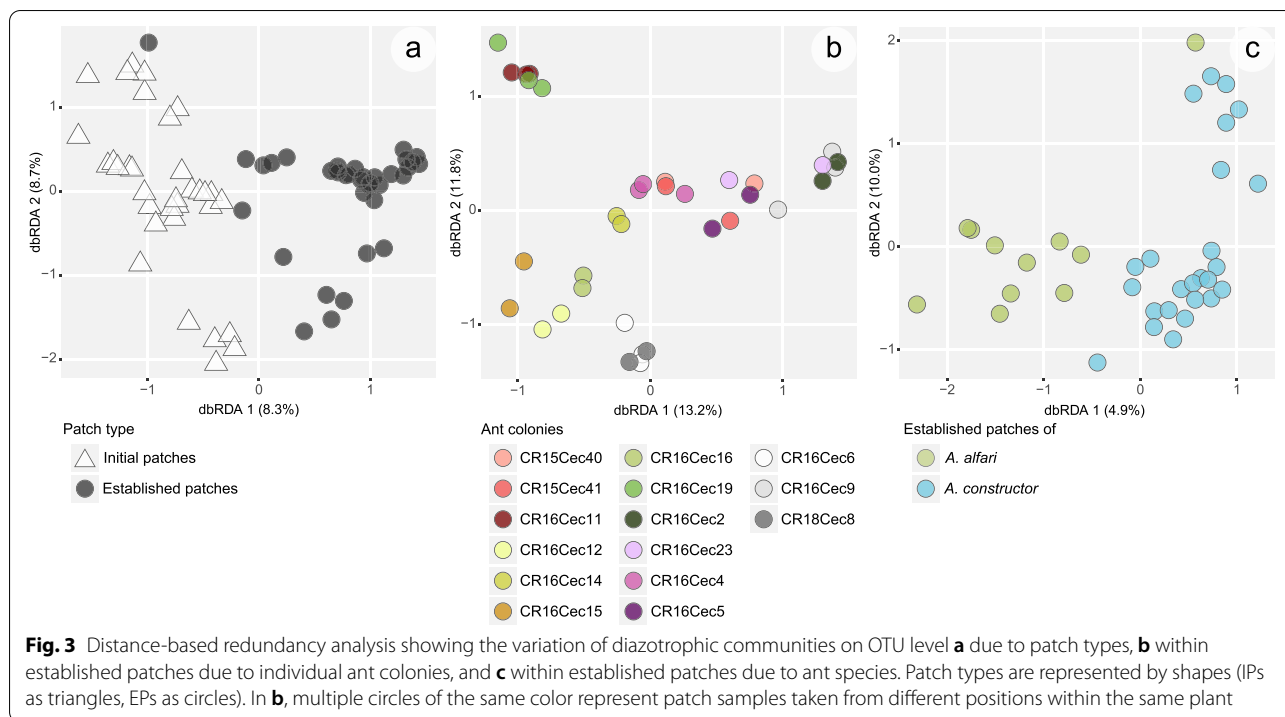


Fig. 2 Diazotrophic community composition in *Azteca* ant-associated patch samples. Taxonomic assignments of OTUs are summarized on the order level based on BLASTP analysis. On the x-axis, every bar represents the diazotrophic community per ant colony, grouped by patch type (initial patch, established patch) and ant species (*Azteca alfari*, *A. constructor*, *A. xanthochroa*), whereas the y-axis shows the relative read abundance of taxonomic orders



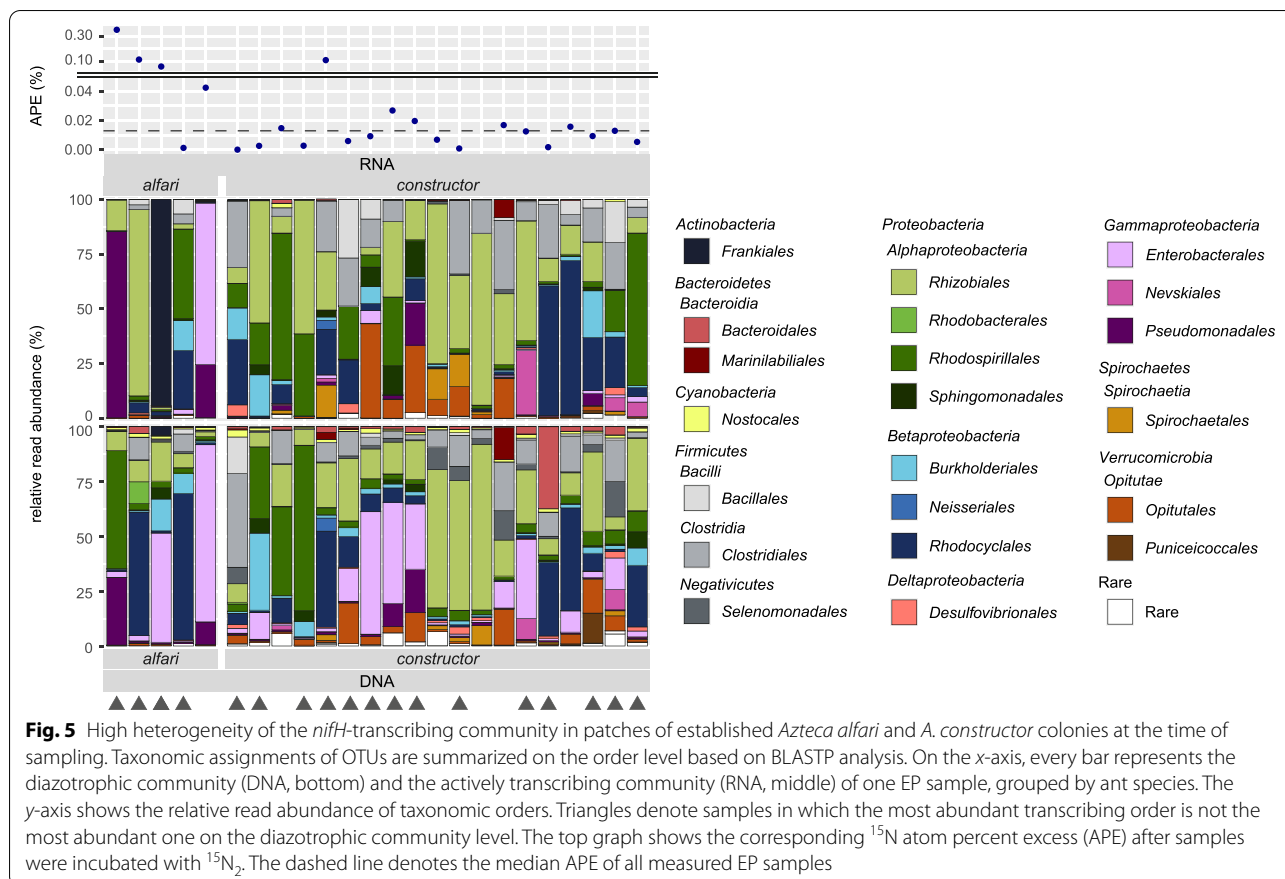
of EPs ($P = 0.0029$; $R^2 = 0.049$; Fig. 3c), but not of IPs ($P = 0.316$).

Ecophysiological traits of diazotrophs were inferred from *nifH* amino acid sequences, by assigning OTUs to one of four phylogenetic clusters based on regression trees (Fig. 4). In both patch types, most reads belonged to the phylogenetic cluster I (IP: on average 71% of reads per sample, EP: on average 72%), harboring mainly the canonical Mo-Fe nitrogenase of aerobic *Proteobacteria* and *Cyanobacteria*. A considerable percentage of reads was assigned to cluster II, which represents the alternative nitrogenase *anfH* using only Fe as a cofactor (IP 26%, EP 14%). Reads of cluster III consisting mainly of obligate anaerobic diazotrophs harboring the canonical Mo-Fe

nitrogenase were almost exclusively present in patches of established ant colonies and more abundant in EPs of *A. constructor* than *A. alfari* (IP 1%, EP 12%; *alf* 5%, *con* 15%). The potentially inactive nitrogenases of cluster IV were hardly present in both sample types (IP 0.7%, EP 0.7%).

High diversity of diazotrophs actively transcribing *nifH* genes

To identify potential key diazotrophs that were actively expressing the *nifH* gene at the time of sampling, we sequenced reversely transcribed RNA (cDNA) of EPs. For both ant species, the actively *nifH*-transcribing communities were significantly less diverse than the *nifH*



gene-harboring communities (Additional file 2: Fig. S2; mean Shannon indices; *A. alfari*: DNA 1.8, RNA 0.8, $P = 0.036$; *A. constr.*: DNA 2.9, RNA 2.1, $P < 0.001$). In Fig. 5, data of the *nifH* gene-harboring communities (based on DNA) are depicted together with the *nifH*-transcribing communities (based on RNA) derived from the same patch samples, along with their corresponding ^{15}N APE after incubations. We recovered *nifH* transcripts from samples with varying N_2 fixation activity, which was not associated with a particular taxonomic group. In general, reads assigned to *Alpha*-, *Beta*-, and *Gammaproteobacteria* were particularly abundant in actively *nifH*-transcribing communities of both ant species. However, no specific taxonomic group was ubiquitous and dominating these communities; instead, they were composed of diverse orders. Interestingly, in nearly all cases, the most abundant *nifH*-transcribing taxa at the time of sampling did not reflect the most abundant *nifH* gene-harboring taxa within the same samples (Fig. 5, denoted by triangles). This discrepancy was particularly apparent for *A. alfari*. In patches showing higher ^{15}N enrichments than the median APE, reads assigned to the genera *Azospirillum* (*Rhodospirillales*), *Frankia* (*Frankiales*), *Kosakonia* (*Enterobacteriales*), *Methyloferula* (*Rhizobiales*), and *Pseudomonas*

(*Pseudomonadales*) were dominating the *nifH* transcripts of *A. alfari* EPs, whereas reads assigned to *Lachnoclostridium* (*Clostridiales*), *Rhodopseudomonas*, *Rhodomicrobium* (both *Rhizobiales*), *Magnetospirillum* (*Rhodospirillales*), *Sphingomonas* (*Sphingomonadales*), *Dactylopiibacterium* (*Rhodocyclales*), and an unclassified *Opiritaceae* (*Opiritales*) were most abundant amongst the *nifH* transcripts of *A. constructor* EPs (Additional file 2: Fig. S3).

Discussion

N_2 fixation is a prevalent process in the *Azteca-Cecropia* symbiosis

In the domatia of their *Cecropia* host plant, *Azteca* ants create and maintain patches housing an intricate ecosystem, which might be crucial for colony survival. The observed abundance of patch organisms (fungi, nematodes, and bacteria) in C-dominated initial patches indicated the presence of additional N sources. Our study now provided the first evidence for atmospheric N_2 fixation in ant-made patches, which can serve as an N source in arboreal *Azteca* ant colonies (Fig. 1). Via $^{15}\text{N}_2$ tracer assays, we detected significant amounts of fixed N in initial patches (IPs) formed by foundress queens, thereby supporting our hypothesis that these patches obtain N

via biological nitrogen fixation (BNF). This additional N presumably supports the growth of patch organisms in the C-dominated IP which, in turn, could help inhabiting ants raising their first larvae as their diet is supplemented with particles from IPs [37].

Contrary to our hypothesis, BNF was frequently detected and had similar rates in patches of established colonies (EPs) formed and maintained by worker ants as in foundress queen-initiated IPs. This is surprising, as these patches were frequently enriched by N-containing debris such as dead nestmates and occasionally food bodies (pers. observation), thus potentially decreasing the demand for BNF. In EPs of both ant species, the estimated proportion of diazotrophs to total bacteria was up to 14%, with an average of 3%, which is considerably higher than in various other terrestrial environments. For instance, in grassland or agricultural soil, as well as on plant surfaces and roots, diazotrophs have been estimated to account for less than 1% of the total microbial community [45–47]. This indicates selection in favor of BNF in patch ecosystems, potentially driven by the increasing demand for N due to increasing bacterial, fungal, and nematode biomass in later-stage patches.

N₂ fixation can support ant colony growth

The only previous evidence for ant-associated BNF activity was found in fungal gardens of ground-dwelling leaf cutter ants, which was estimated to account for around 50% of the garden's N-demand based on natural isotope fractionation analysis [48]. While it is not possible to similarly model the N-input by BNF in *Azteca* colonies, BNF rates in fungal gardens of leaf cutter ants could be assessed based on measurements conducted by Pinto-Tomás and colleagues [48] (for detailed calculations, see Additional file 3: supplementary methods, Additional file 1: Table S2). The mean BNF rates we detected in the *Azteca* ant-built patches were around 200 times higher than those in the abovementioned fungal gardens, though the ¹⁵N₂ incubation setup used for fungal garden pieces is believed to underestimate BNF activity (Pinto-Tomás, pers. communication). The mean BNF rate measured in *Azteca*-made patches (3.9 μg N g⁻¹ (dw) day⁻¹) also exceeded rates of other tropical habitats, such as canopy leaves, mosses, litter, and soil samples that range from appr. 0.001 to 2.8 μg N g⁻¹ (dw) day⁻¹ [49–52]. Only BNF rates of cyanolichens on volcanic soil in young forests and the highest detected rates in litter of a tropical lowland rainforest (up to 6 μg N g⁻¹ (dw) day⁻¹ [53, 54]) surpassed the mean BNF rate in ant-built patches but were still below the maximum rate (63.2 μg N g⁻¹ (dw) day⁻¹). Although the information on the life cycle and nutrition of these *Azteca* ant species is scarce, our approximation indicates that N provided by BNF can play a considerable

role in ant population growth (for calculation details, see Additional file 3: supplementary methods). In established *A. alfari* and *A. constructor* colonies, up to 9.32 and 139.59 μg N, respectively, can be fixed daily, which correspond to approximately 66% and 900% of a worker ant's N content. On average, it takes around 2 months from an egg to an adult ant [1, 55]. Under the assumption that all freshly fixed N ends up in *Azteca* larvae, the maximum N input extrapolated for a 2-month period corresponds to an “instant production” of up to 40 *A. alfari* and 598 *A. constructor* workers. Due to the small patch size of IPs, the amount of fixed N during the colony founding stage would be only sufficient for up to 0.5 workers, according to this calculation. Yet, its impact might be crucial for this most precarious colonization phase [56]. The first worker generation in claustral colony founding is typically miniature workers developed with the restricted nutrients provided solely by the queen [1]. Even putatively small amounts of additional N might lead to more workers or shorter development times and therefore could increase the chance of survival. In any case, BNF might enable the growth of patch organisms and thus facilitate the development of the diverse patch community including fungi, nematodes, and bacteria.

Initial diazotrophic community is not shaped by the ant species

By scratching off plant parenchyma and forming the initial substrate for fungal cultivation [37], the queen is assumed to inoculate the C-dominated substrate with vertically transmitted bacteria from its mother colony, though very heterogeneous diazotrophic communities of various taxonomic orders dominated the *nifH* libraries of individual IP samples (Fig. 2). Contrary to our expectations, the diazotroph community composition in IPs was not shaped by the ant species. This does not confirm vertical transmission of diazotrophs from mother to daughter colonies; though, this also does not necessarily rule it out. As ascomycete fungi and nematodes were not only found in patches but also in the infrabuccal pockets of foundress queens when entering the plant internode [37], bacteria are likely transmitted vertically as well. The discovered diazotrophic heterogeneity within an ant species may be explained by two scenarios: the IP communities did not originate from the same mother colony, or varying environmental conditions and stochastic effects favor certain diazotrophs which further dominate patches in the early colony stage. Interestingly, despite detected taxa, e.g., *Rhizobiales* and *Enterobacterales* which are regularly reported as plant-associated diazotrophs, the host plants did not determine the diazotrophic community. The correlation between *Cecropia* saplings harboring multiple initial ant colonies and the diazotrophs was

non-significant but had a low p -value. While this could indicate that some diazotrophs in patches are plant associated and were potentially introduced from the plant surface when the internode was entered, it might rather mirror that some initial ant colonies in one *Cecropia* plant originated from the same mother colony. Various environmental conditions can be expected to vary significantly between the plant surface and the patch ecosystem inside the ant nesting space (e.g., humidity, light intensity, temperature, nutrient availability, activity, and biomass of fungi, nematodes, and ants) implying a challenging environmental shift. Studying an increased number of *Cecropia* plants colonized by different *Azteca* species and investigating bacteria inside the infrabuccal pockets of foundress queens during their nuptial flight would be needed to finally clarify the role of the host plant and the mother colonies. *Rhizobiales*, *Enterobacterales*, and *Burkholderiales* have previously been hypothesized to be involved in recycling, upgrading, or fixing N_2 in the gastrointestinal tract of arboreal ants [21, 23, 24, 57, 58], though most genera found in ant guts were not present in studied patches. Only *Klebsiella* and *Pantoea* (both *Enterobacterales*) were widely distributed and have been found in ant guts [23, 57], fungal gardens of leaf cutter ants [48], and now also in patches of *Azteca* colonies.

Mature diazotrophic community differs from initial patches and is associated with the ant species

Interestingly, the diazotrophic community composition changed during colony development and differed significantly between IPs and EPs (Fig. 3a), even though both patch types displayed similar BNF rates. The change in community composition when transitioning from IPs to EPs could be explained by multiple factors: First, by the colonization history, as it is common for *Azteca-Cecropia* and various other ant-plant associations [37, 59–62] that one plant houses several colony foundress queens in spatially separated domatia. As only one young ant colony takes over the *Cecropia* plant, several initial patch communities are finally fused and expected to increase microbial diversity. Second, new diazotrophs could be introduced from outside when ant workers in established *Azteca* colonies are patrolling on the surface of the *Cecropia* tree [63]. Third, the difference between diazotrophic communities in IPs and EPs could be due to the patch transformation during ant colony growth. The patch texture changes from brittle IPs (Fig. 1a) to extensive lawn-like EPs in *A. alfari* colonies (Fig. 1b) and dense voluminous EPs in *A. constructor* (Fig. 1c). Different textures will create variable environmental conditions, which could lead to changes in the diazotrophic community composition.

The diazotrophic community composition in EPs from different internodes of the same ant colony did not vary significantly. Our data imply that newly built EPs of subsequently colonized apical plant internodes are not randomly colonized by diazotrophs, but that worker ants must transfer EP material from existing patches as an inoculum onto new patches. The variation in diazotroph community composition correlated significantly with ant species, thereby supporting our hypothesis that the diazotrophs in established ant colonies are associated with the ant species (Fig. 3c). Differences in the community composition between EPs of both ant species could be caused by differing environmental conditions in these EPs. For instance, we identified a strong O_2 gradient towards anoxia in EPs of *A. constructor*, whereas in *A. alfari* EPs, only atmospheric O_2 concentrations were measured (Additional file 2: Fig. S4, Additional file 3: supplementary methods). Reduced O_2 concentrations could offer niches for potentially anaerobic diazotrophs (e.g., cluster III, Fig. 4) and are reflected in the higher relative abundance of mainly anaerobic bacterial groups such as *Bacteroidales*, *Clostridiales*, and *Opitutales* in *A. constructor* compared to *A. alfari* EPs (Fig. 2, established patches).

Heterotrophic *nifH*-transcribing community implies resilience towards variable conditions

As BNF is a highly regulated process [64], sequencing of *nifH* genes merely identifies the community harboring these genes, while sequencing the *nifH*-transcripts reflects the diazotrophic community that actively expressed the genes and thus was likely involved in fixing atmospheric N_2 . Interestingly, in the majority of samples, the most abundant taxonomic order in DNA-based libraries did not coincide with the most abundant order in RNA-based libraries at the time of sampling (Fig. 5, denoted by triangles). This underlines the importance in investigating functional guilds beyond the DNA level, as actively transcribing community members cannot be inferred based only on the *nifH*-gene harboring community composition. We hypothesized that *nifH*-transcribing communities are dominated by few specialized taxa actively expressing the *nifH* gene, and indeed, the detected *nifH*-transcribing communities were less diverse than the *nifH* gene-harboring communities (Additional file 2: Fig. S2). However, there was no ubiquitous taxonomic group dominating all samples. Instead, in patches showing higher ^{15}N enrichments than the median APE, we observed an unspecific active diazotrophic community, whose transcripts belonged mainly to twelve different taxonomic genera of nine orders (Additional file 2: Fig. S3). Amongst others, we found in situ *nifH* transcription of the genus *Pseudomonas* in investigated patches,

thus supporting a recent study on the BNF capability of *Pseudomonas* isolates originating from an *Azteca-Cecropia* association in Brazil [26]. The genera *Klebsiella* and *Pantoea*, which are supposed to contribute to BNF in fungal gardens of leaf cutter ants [48] could be detected in DNA-based libraries, but not within the *nifH* transcripts.

Conclusions

Our study provides the first evidence for atmospheric N₂ fixation in ant-made patches located in the nesting space of the host trees—a so far overlooked potential N source for arboreal ants to overcome N limitations. Future research will show if this phenomenon is exclusive to the *Azteca-Cecropia* or can be found in other ant-plant associations. Although the sources of the diazotrophs serving as inoculum for freshly formed IPs need further investigation, the diverse and heterogeneous diazotrophic communities across ant colonies imply functional redundancy in ant-built patches, which could provide the ant-plant-patch system with a higher resilience towards changing environmental conditions like nutrient shortage, but also towards changes in substrate or O₂ concentrations. Our data indicate that BNF can result in reasonable amounts of N especially in established ant colonies. This might not only enable bacterial, fungal, and nematode growth as well as community development in the patch ecosystems but can even support the growth of ant populations. Even though larval food seems to be supplemented with patch material during the early stage of a colony's life cycle, more information on the nutrient fluxes inside the domatia and ants' population dynamics are needed to confirm our indications that BNF is of nutritional relevance for *Azteca* population growth during early foundation and in established ant colonies.

Methods

Study site characteristics and sample collection

Azteca-colonized *Cecropia* trees were investigated between 2015 and 2018 in lowland areas of the Golfo Dulce region in SW Costa Rica close to the Tropical Research Facility La Gamba (www.lagamba.at; N08° 42' 03", W083° 12' 06", 70 m asl). Sampled *Cecropia* trees were collected from disturbed habitats at the margins of primary and secondary rain forests, alongside rivers (Rio Bonito, Rio Sardinal) and roads. *Azteca*-colonized *Cecropia* trees were cut in the field, wrapped in plastic bags, and transported to the research station. Colonies were categorized into two colonization stages, an *early founding stage* limited to one inhabited plant internode and an *established ant colony stage* with at least two internodes being inhabited. In the founding stage, solely the ant queen, possible brood, and an initial pile of scratched-off

plant parenchyma ("initial patch" (IP)) were present. The entrance hole created by the founding queen to enter the hollow stem internode was always sealed with chewed plant tissue [37]. Established ant colonies, in contrast, reopened the entrance and connected additional internodes, in many of which they also formed clearly defined dark-colored patches ("established patches" (EPs)). After opening *Cecropia* stems, we collected patch material using sterile tweezers. Queens and worker ants (if present) were preserved in ethanol and classified using an *Azteca*-specific key [65]. We investigated IPs of *A. alfari* [Emery], *A. constructor* [Emery], and *A. xanthochroa* [Roger] and EPs of *A. alfari* and *A. constructor*, as no established *A. xanthochroa* ant colony inhabited one of our sampled *Cecropia* trees.

Quantifying N₂ fixation activity

For proof of N₂ fixation activity in ant-built patches, a ¹⁵N₂ tracer assay was used [66]. Fifty-six *Cecropia* plants were investigated, and in total, 122 samples were incubated in 2-mL glass vials containing an artificial ¹⁵N₂:O₂ (80:20) atmosphere. Early colony stage IPs (total *n* = 23; per species: *A. alfari* (10), *A. constructor* (2), *A. xanthochroa* (11)) were transferred directly from the internodes into the glass vial. EPs per established ant colonies (total *n* = 99; per species: *A. alfari* (36), *A. constructor* (59)) were homogenized first on a weighing paper before transferring parts into the glass vial for incubations and storing parts for molecular work. In addition to patch material, plant parenchyma of uncolonized internodes (*n* = 6), typically serving as initial substrate for patches, was sampled for incubations as well. The head space in the glass vials was exchanged by first inducing vacuum using a syringe and then injecting 2 mL of the artificial atmosphere. ¹⁵N₂ gas (98 at%) used in incubations was purchased from CAMPRO Scientific (Berlin, Germany, lot # MBBB0968V) and Cambridge Isotope Laboratories (Tewksbury, MA, USA, lot # I-21117A) and tested negative for ¹⁵N-labelled ammonia gas contaminations using the hypobromite oxidation method [67, 68]. After incubation for 72 h, the vials were opened and patches were dried at 60 °C. The ¹⁵N/¹⁴N isotopic ratios were determined using an elemental analyzer (EA 110; CE Instruments, Milan, Italy) coupled to an isotope ratio mass spectrometer (DELTA Plus; Finnigan MAT, Bremen, Germany) in Vienna, Austria. Non-incubated parenchyma (*n* = 4), IPs (*n* = 33), and EPs (*n* = 84) served as natural abundance controls. The measured ¹⁵N enrichment per sample was calculated to atom percent excess (APE = [at%_{inc.} - at%_{nat.ab.}] × $\left[\frac{100}{\text{at}\%^{15}\text{N}_{2\text{gas}} - \text{at}\%_{\text{nat.ab.}}} \right]$) . The amount of fixed N was calculated for each sample as

$$\text{N per mg patch dry weight } [\mu\text{g N mg}^{-1} \text{ dw}] \\ \left(\text{N} = \left[\frac{\text{APE}_{\text{sample}}}{100} \right] \times \left[\frac{(\text{Amt}\% \text{N})_{\text{sample}}}{100} \right] \times 1000 \right).$$

Investigating the diazotrophic community composition

In total, the diazotrophic communities of 33 early colony stages (*A. alfari* (19), *A. constructor* (6), *A. xanthochroa* (8)) and 36 established ant colonies (*A. alfari* (12), *A. constructor* (24)) were investigated (detailed overview in Additional file 1: Table S3). Some *Cecropia* plants were colonized by several foundress queens, each in a spatially segregated domatium. From the early ant colony stage, the single, initial patch was sampled. From 15 established ant colonies, patch material was sampled up to three times throughout the nesting space. As new domatia are formed apically during plant growth, recently created patches were from the top, while older patch material was sampled from lower parts of the plants. Collected patch samples were preserved in RNAlater (Thermo Fisher Scientific, Waltham, MA, USA) and stored at -20°C in the field and at -80°C after returning to Vienna. Details of the molecular analysis to investigate the diazotrophic community composition can be found in the Additional file 3: supplementary methods. In short, nucleic acid extractions of RNAlater-removed samples were performed according to a bead-beating phenol/chloroform-based protocol [69]. To examine the diazotrophic communities, we amplified the dinitrogenase reductase-encoding gene (*nifH*) [42, 43] using Ueda19F as forward and R6 as reverse primer [70, 71], as these showed the least amplification bias regarding *nifH* homologous genes (*bchX*, *chlL*, *bchL*, *parA*) [44]. To uncover the diazotrophic communities transcribing the *nifH* gene and therefore potentially actively fixing N_2 at the time of sampling, purified RNA was reverse transcribed into cDNA. As extractions of IPs did not yield sufficient nucleic acids for RNA purification, only EPs were used for investigating the transcribing diazotrophic communities. *NifH* genes and transcripts of the template DNA and cDNA were amplified in a two-step barcoding approach for subsequent Illumina MiSeq sequencing according to Angel et al. [44]. Raw MiSeq amplicon reads were deposited in the NCBI Short Read Archive under the BioProject accession number PRJNA777006 [72] and processed using the pipeline NifMAP [44]. The clustered OTUs (3% radius) were taxonomically classified using BLASTP [73] against the RefSeq database [74]. OTUs were assigned to phylogenetic clusters based on Classification And Regression Trees (CART) [75]. Samples resulting in less than 300 *nifH* reads were discarded. The remaining samples harbored on average around 6000 *nifH* reads amplified from DNA and 1900 *nifH* reads amplified from cDNA.

Quantitative PCR assays

The abundances of potential diazotrophs in patches of established ant colonies were assessed by quantitative PCR assays (qPCR) targeting the *nifH* gene using the same primer pair as for amplicon sequencing. The total microbial abundances were investigated using primers 515F-mod and 806R-mod [76] targeting the 16S rRNA gene. Ten EPs of both *Azteca* species were analyzed. For quantification of both genes, serially diluted standards (ranging between 10^1 and 10^6 copies) were added per reaction plate. Details on the used standards and the performed qPCR assay according to Angel et al. [44] are listed in the Additional file 3: supplementary methods. The *nifH* gene copy number did not have to be corrected, as homologous non-*nifH* reads were not detected in amplicon libraries of the same samples.

The abundance of diazotrophs per EP sample was calculated as the proportion of diazotrophic bacteria (*nifH* copy number) to total bacteria (16S rRNA gene copy number). As copy numbers of both genes might be different in the genomes, this abundance is an estimate. While the 16S rRNA gene copy numbers are known to vary in genomes [77, 78], also additional *nifH* copies can exist in the chromosome, e.g., in *Clostridium pasteurianum* [79], or on a symbiotic plasmid, e.g., in *Bradyrhizobium* sp. DOA9 [80]. Furthermore, every known diazotroph which encodes an alternative V or Fe-only nitrogenase also possesses the canonical Mo nitrogenase [81].

Statistical analyses

All analyses were performed using R (version 3.5.2 [82];) and were plotted using the package ggplot2 (version 3.3.3 [83];). All functions originated from the package vegan (version 2.5-6 [84];), unless otherwise mentioned.

A Wilcoxon rank sum test (function `wilcox.test`, package `stats`, version 3.5.2 [82];) was used to test whether APE differs significantly across patch types and uncolonized parenchyma (pairwise, *p*-value corrected), and whether BNF rates correlate with patch types or ant species within EPs. Kruskal-Wallis rank sum test (function `kruskal.test` of the package `stats`) was used to test if BNF rates of IPs correlate with the ant species. The Wilcoxon rank sum test was also used to test for correlations between quantitative abundance data (gene copy numbers and their ratio) and ant species.

For all OTU-based distance matrices, Bray-Curtis dissimilarity measures were used. Permutational multivariate ANOVA (PERMANOVA) was used for variance partitioning analyses (`adonis` function) [85]. For research question-based data subsetting and computing Shannon alpha diversity indices (function `estimate_richness`), the `phyloseq` package was used (version 1.26.1 [86];). For testing correlations of alpha

diversity differences with categories (patch type and ant species), the Wilcoxon and Kruskal-Wallis rank sum tests were used. The package microbiome was used for core microbiome analyses (core function, version 1.5.28 [87]). Read counts were converted into relative abundance for community composition analyses. For comparisons between communities of IPs and EPs, as well as EP communities between ant species, biological replicates of the same ant colony (Additional file 1: Table S3) were merged by calculating the average community composition. A PERMANOVA was used for testing correlations between categories (patch type, ant species within patch types, assumed patch age and ant colony within multiple-sampled established ant colonies, and tree specimens within multiple queen-colonized *Cecropia* trees) and variation in community composition. Significant factors were displayed as constrained distance-based redundancy analysis (dbRDA) via the function capscale. To evaluate per ant species if alpha diversity measures of the general diazotrophic and *nifH*-transcribing communities in EPs are significantly varying, the Wilcoxon rank sum tests were used. Analysis scripts are available at https://github.com/mnepel/nitrogen_fixation_arboreal_ant_nests [88].

Abbreviations

APE: Atom percent excess; BNF: Biological N fixation; C: Carbon; dw: Dry weight; EP: Established patch; IP: Initial patch; N: Nitrogen; OTU: Operational taxonomic unit; Pa: Parenchyma; qPCR: Quantitative PCR.

Supplementary Information

The online version contains supplementary material available at <https://doi.org/10.1186/s12915-022-01289-0>.

Additional file 1: Table S1. Relative read abundances of the most abundant taxonomic orders per patch type. **Table S2.** Calculating BNF rates in fungal gardens of leaf cutter ants. **Table S3.** Overview on the number of sampled *Cecropia* trees, early stage and established ant colonies.

Additional file 2: Figure S1. Alpha diversities in samples due to different patch types of individual *Azteca* species. **Figure S2.** Alpha diversities in patch samples of established ant colonies on *nifH* gene and transcript level. **Figure S3.** *NifH* transcribing community on genus level in selected patch samples of established *Azteca alfari* and *A. constructor* colonies with measured APE higher than the overall median. **Figure S4.** Oxygen gradients through patches of established *Azteca* colonies.

Additional file 3: Supplementary methods. Detailed information on molecular analysis and performed qPCR assays, calculating BNF rates in fungal gardens of leaf cutter ants, evaluating the potential ecological role of BNF for ant colony growth, and oxygen profiling through established patches.

Acknowledgements

We thank the staff at the Estación Tropical La Gamba for great working conditions and help, wonderful food, and a lot of fun beyond work. We thank Gaute Lavik from the Max Planck Institute for Marine Microbiology, Bremen, Germany, for performing the ammonia measurements of $^{15}\text{N}_2$ gas samples. We thank Costa Rican authorities for their permission to conduct this research (R-046-2015-OT-CONAGEBIO, SINAC INV-ACOSA-001-16, INV ACOSA-013-18).

Authors' contributions

V.E.M. and A.R. designed the stable isotope and D.W. and M.N. the molecular part of this study. V.E.M., M.N., F.B.O., and D.W. conducted the fieldwork and collected the samples. M.N. and J.P. performed the lab work. M.N. analyzed the data and wrote the original draft of the manuscript. All authors contributed substantially to the revisions. All authors read and approved the final manuscript.

Funding

This work was funded by a project grant (P-31990-B to V.E.M.) from the Austrian Science Fund (FWF). M.N. was supported by a DOC fellowship (24388) from the Austrian Academy of Sciences (ÖAW) and by the Austrian Science Fund (FWF) DK+ program 'Microbial Nitrogen Cycling' [W1257-B20] and a fellowship by the Society for the promotion of the La Gamba Field Station. F.B.O. was funded by a short-term grant abroad (KWA) from the University of Vienna and the DFG under Germany's Excellence Strategy - EXC 2117 - 422037984.

Availability of data and materials

The raw sequencing reads were deposited in the NCBI Short Read Archive under the BioProject accession number PRJNA777006 [72].

Declarations

Ethics approval and consent to participate

Not applicable

Consent for publication

Not applicable

Competing interests

The authors declare that they have no competing interests.

Author details

¹Department of Botany and Biodiversity Research, University of Vienna, Vienna, Austria. ²Department of Microbiology and Ecosystem Science, Centre for Microbiology and Environmental Systems Science, University of Vienna, Vienna, Austria. ³Centre for the Advanced Study of Collective Behaviour, University of Konstanz, Konstanz, Germany.

Received: 3 November 2021 Accepted: 31 March 2022

Published online: 09 June 2022

References

- Hölldobler B, Wilson EO. The ants. Cambridge: Harvard University Press; 1990.
- Nelsen MP, Ree RH, Moreau CS. Ant-plant interactions evolved through increasing interdependence. *Proc Natl Acad Sci U S A*. 2018;115:12253–8.
- Moreau CS, Bell CD, Vila R, Archibald SB, Pierce NE. Phylogeny of the ants: diversification in the age of angiosperms. *Science*. 2006;312:101–4.
- Weber MG, Keeler KH. The phylogenetic distribution of extrafloral nectaries in plants. *Ann Bot*. 2013;111:1251–61.
- Chomicki G, Renner SS. Phylogenetics and molecular clocks reveal the repeated evolution of ant-plants after the late Miocene in Africa and the early Miocene in Australasia and the Neotropics. *New Phytol*. 2015;207:411–24.
- Heil M. Extrafloral nectar at the plant-insect interface: a spotlight on chemical ecology, phenotypic plasticity, and food webs. *Annu Rev Entomol*. 2015;60:213–32.
- Rickson FR. The ultrastructure of *Acacia cornigera* L. Beltian body tissue. *Am J Bot*. 1975;62:913–22.
- Heil M, Baumann B, Kruger R, Linsenmair KE. Main nutrient compounds in food bodies of Mexican *Acacia* ant-plants. *Chemoecology*. 2004;14:45–52.
- Heil M, Fiala B, Kaiser W, Linsenmair KE. Chemical contents of *Macaranga* food bodies: adaptations to their role in ant attraction and nutrition. *Funct Ecol*. 1998;12:117–22.
- Bischof S, Umhang M, Eicke S, Streb S, Qi W, Zeeman SC. *Cecropia peltata* accumulates starch or soluble glycogen by differentially regulating starch biosynthetic genes. *Plant Cell*. 2013;25:1400–15.

11. Rickson FR. Anatomical development of leaf trichilium and Müllerian bodies of *Cecropia peltata* L. *Am J Bot.* 1976;63:1266–71.
12. Fischer RC, Richter A, Wanek W, Mayer V. Plants feed ants: food bodies of myrmecophytic *Piper* and their significance for the interaction with *Pheidole bicornis* ants. *Oecologia.* 2002;133:186–92.
13. Heil M, McKey D. Protective ant-plant interactions as model systems in ecological and evolutionary research. *Annu Rev Ecol Evol Syst.* 2003;34:425–53.
14. Davidson DW, Longino JT, Snelling RR. Pruning of host plant neighbors by ants: an experimental approach. *Ecology.* 1988;69:801–8.
15. Treseder KK, Davidson DW, Ehleringer JR. Absorption of ant-provided carbon dioxide and nitrogen by a tropical epiphyte. *Nature.* 1995;375:137–9.
16. Fischer RC, Wanek W, Richter A, Mayer V. Do ants feed plants? A ¹⁵N labelling study of nitrogen fluxes from ants to plants in the mutualism of *Pheidole* and *Piper*. *J Ecol.* 2003;91:126–34.
17. Gegenbauer C, Mayer VE, Zotz G, Richter A. Uptake of ant-derived nitrogen in the myrmecophytic orchid *Caularthron bilamellatum*. *Ann Bot.* 2012;110:757–65.
18. Chomicki G, Renner SS. Farming by ants remodels nutrient uptake in epiphytes. *New Phytol.* 2019;223:2011–23.
19. Dejean A, Petitclerc F, Roux O, Orivel J, Leroy C. Does exogenic food benefit both partners in an ant-plant mutualism? The case of *Cecropia obtusa* and its guest *Azteca* plant-ants. *C R Biol.* 2012;335:214–9.
20. Davidson DW. The role of resource imbalances in the evolutionary ecology of tropical arboreal ants. *Biol J Linn Soc.* 1997;61:153–81.
21. Hu Y, Sanders JG, Lukasiak P, D'Amelio CL, Millar JS, Vann DR, et al. Herbivorous turtle ants obtain essential nutrients from a conserved nitrogen-recycling gut microbiome. *Nat Commun.* 2018;9:964.
22. Davidson DW, Cook SC, Snelling RR, Chua TH. Explaining the abundance of ants in lowland tropical rainforest canopies. *Science.* 2003;300:969–72. doi:10.1126/science.1100054.
23. Eilms S, Heil M. Bacterial associates of arboreal ants and their putative functions in an obligate ant-plant mutualism. *Appl Environ Microbiol.* 2009;75:4324–32.
24. Russell JA, Moreau CS, Goldman-Huertas B, Fujiwara M, Lohman DJ, Pierce NE. Bacterial gut symbionts are tightly linked with the evolution of herbivory in ants. *Proc Natl Acad Sci U S A.* 2009;106:21236–41.
25. van Borm S, Buschinger A, Boomsma JJ, Billen J. *Tetraponera* ants have gut symbionts related to nitrogen-fixing root-nodule bacteria. *Proc R Soc B.* 2002;269:2023–7.
26. Fukuda TTH, Pereira CF, Melo WGP, Menegatti C, Andrade PHM, Groppo M, et al. Insights into the ecological role of *Pseudomonas* spp. in an ant-plant symbiosis. *Front Microbiol.* 2021;12:621274.
27. Bar-Shmuel N, Behar A, Segoli M. What do we know about biological nitrogen fixation in insects? Evidence and implications for the insect and the ecosystem. *Insect Sci.* 2020;27:392–403.
28. Berg CC, Rosselli PF. *Cecropia*. Bronx: The New York Botanical Garden Press; 2005.
29. Longino JT. Taxonomy of the *Cecropia*-inhabiting *Azteca* ants. *J Nat Hist.* 1991;25:1571–602.
30. Vasconcelos HL, Casimir AB. Influence of *Azteca alfari* ants on the exploitation of *Cecropia* trees by a leaf-cutting ant. *Biotropica.* 1997;29:84–92.
31. Schupp EW. *Azteca* protection of *Cecropia*: ant occupation benefits juveniles trees. *Oecologia.* 1986;70:379–85.
32. Davidson DW. *Cecropia* and its biotic defenses. In: Berg CC, Rosselli PF, editors. *Cecropia*. Bronx: The New York Botanical Garden Press; 2005. p. 214–26.
33. Defosse E, Selosse MA, Dubois MP, Mondolot L, Faccio A, Djieto-Lordon C, et al. Ant-plants and fungi: a new three-way symbiosis. *New Phytol.* 2009;182:942–9.
34. Voglmayr H, Mayer V, Maschwitz U, Moog J, Djieto-Lordon C, Blatrix R. The diversity of ant-associated black yeasts: insights into a newly discovered world of symbiotic interactions. *Fungal Biol.* 2011;115:1077–91.
35. Blatrix R, Djieto-Lordon C, Mondolot L, La Fisca P, Voglmayr H, McKey D. Plant-ants use symbiotic fungi as a food source: new insight into the nutritional ecology of ant-plant interactions. *Proc R Soc B.* 2012;279:3940–7.
36. Vasse M, Voglmayr H, Mayer V, Gueidan C, Nepel M, Moreno L, et al. A phylogenetic perspective on the association between ants (Hymenoptera: Formicidae) and black yeasts (Ascomycota: Chaetothyriales). *Proc R Soc B.* 2017;284:20162519.
37. Mayer VE, Nepel M, Blatrix R, Oberhauser FB, Fiedler K, Schönenberger J, et al. Transmission of fungal partners to incipient *Cecropia*-tree ant colonies. *PLoS One.* 2018;13:e0192207.
38. Nepel M, Voglmayr H, Blatrix R, Longino JT, Fiedler K, Schönenberger J, et al. Ant-cultivated Chaetothyriales in hollow stems of myrmecophytic *Cecropia* sp. trees - diversity and patterns. *Fungal Ecol.* 2016;23:131–40.
39. Esquivel A, Abolafia J, Hanson P, Pinto-Tomás AA. A new species of nematode, *Sclerohabditis neotropicalis* sp.n. (Rhabditida), associated with *Azteca* ants in *Cecropia obtusifolia*. *Nematropica.* 2012;42:163–9.
40. Morera J, Mora-pineda G, Esquivel A, Hanson P, Pinto-Tomás AA. Detection, ultrastructure and phylogeny of *Sclerohabditis neotropicalis* (Nematoda: Rhabditidae) nematodes associated with the *Azteca* ant-*Cecropia* tree symbiosis. *Rev Biol Trop.* 2018;66:368–80.
41. Brown MJF, Bonhoeffer S. On the evolution of claustral colony founding in ants. *Evol Ecol Res.* 2003;5:305–13.
42. Zehr J, Jenkins B, Short S, Steward G. Nitrogenase gene diversity and microbial community structure: a cross-system comparison. *Environ Microbiol.* 2003;5:539–54.
43. Gaby JC, Buckley DH. A global census of nitrogenase diversity. *Environ Microbiol.* 2011;13:1790–9.
44. Angel R, Nepel M, Panhölzl C, Schmidt H, Herbold CW, Eichorst SA, et al. Evaluation of primers targeting the diazotroph functional gene and development of NifMAP – a bioinformatics pipeline for analyzing *nifH* amplicon data. *Front Microbiol.* 2018;9:703.
45. Gupta VVSR, Zhang B, Penton CR, Yu J, Tiedje JM. Diazotroph diversity and nitrogen fixation in summer active perennial grasses in a mediterranean region agricultural soil. *Front Mol Biosci.* 2019;6:115.
46. Pereira e Silva MC, Schloter-Hai B, Schloter M, van Elsas JD, Salles JF. Temporal dynamics of abundance and composition of nitrogen-fixing communities across agricultural soils. *PLoS One.* 2013;8:e74500.
47. Regan K, Stempfhuber B, Schloter M, Rasche F, Prati D, Philippot L, et al. Spatial and temporal dynamics of nitrogen fixing, nitrifying and denitrifying microbes in an unfertilized grassland soil. *Soil Biol Biochem.* 2017;109:214–26.
48. Pinto-Tomás AA, Anderson MA, Suen G, Stevenson DM, Chu FST, Cleland WW, et al. Symbiotic nitrogen fixation in the fungus gardens of leaf-cutter ants. *Science.* 2009;326:1120–3.
49. Reed SC, Cleveland CC, Townsend AR. Controls over leaf litter and soil nitrogen fixation in two lowland tropical rain forests. *Biotropica.* 2007;39:585–92.
50. Reed SC, Cleveland CC, Townsend AR. Tree species control rates of free-living nitrogen fixation in a tropical rain forest. *Ecology.* 2008;89:2924–34.
51. Cusack DF, Silver W, McDowell WH. Biological nitrogen fixation in two tropical forests: ecosystem-level patterns and effects of nitrogen fertilization. *Ecosystems.* 2009;12:1299–315.
52. Barron AR, Wurzbarger N, Bellenger JP, Wright SJ, Kraepiel AML, Hedin LO. Molybdenum limitation of symbiotic nitrogen fixation in tropical forest soils. *Nat Geosci.* 2009;2:42–5.
53. Reed SC, Townsend AR, Cleveland CC, Nemergut DR. Microbial community shifts influence patterns in tropical forest nitrogen fixation. *Oecologia.* 2010;164:521–31.
54. Benner JW, Conroy S, Lunch CK, Toyoda N, Vitousek PM. Phosphorus fertilization increases the abundance and nitrogenase activity of the cyanolichen *Pseudocyphellaria crocata* in Hawaiian montane forests. *Biotropica.* 2007;39:400–5.
55. Tschinkel WR. The natural history of the arboreal ant, *Crematogaster ashmeadi*. *J Insect Sci.* 2002;2:12.
56. Nishi AH, Romero GQ. Colonization pattern of *Cecropia* by *Azteca* ants: influence of plant ontogeny, environment and host plant choice by queens. *Sociobiology.* 2008;52:367–76.
57. Stoll S, Gadau J, Gross R, Feldhaar H. Bacterial microbiota associated with ants of the genus *Tetraponera*. *Biol J Linn Soc.* 2007;90:399–412.
58. Anderson KE, Russell JA, Moreau CS, Kautz S, Sullam KE, Hu Y, et al. Highly similar microbial communities are shared among related and trophically similar ant species. *Mol Ecol.* 2012;21:2282–96.
59. Kuhn KM. Colony founding by the ant *Myrmelachista flavocotea*. *Insect Soc.* 2014;61:239–45.
60. Sanchez A. Establishing an ant-plant mutualism: foundress queen mortality and acquiring the third partner. *Insect Soc.* 2016;63:155–62.

61. Fiala B, Maschwitz U. Studies on the south east Asian ant-plant association *Crematogaster borneensis/Macaranga*: adaptations of the ant partner. *Insect Soc.* 1990;37:212–31.
62. Longino JT. Geographic variation and community structure in an ant-plant mutualism: *Azteca* and *Cecropia* in Costa Rica. *Biotropica*. 1989;21:126–32.
63. Gianoli E, Sendoya S, Vargas F, Mejía P, Jaffé R, Rodríguez M, et al. Patterns of *Azteca* ants' defence of *Cecropia* trees in a tropical rainforest: support for optimal defence theory. *Ecol Res.* 2008;23:905–8.
64. Burris RH, Roberts GP. Biological nitrogen fixation. *Annu Rev Nutr.* 1993;13:317–35.
65. Longino JT. A taxonomic review of the genus *Azteca* (Hymenoptera: Formicidae) in Costa Rica and a global revision of the *aurita* group. *Zootaxa*. 2007;1491:1–63.
66. Montoya JP, Voss M, Kähler P, Capone DG. A simple, high-precision, high-sensitivity tracer assay for N₂ fixation. *Appl Environ Microbiol.* 1996;62:986–93.
67. Preisler A, De Beer D, Lichtschlag A, Lavik G, Boetius A, Jørgensen BB. Biological and chemical sulfide oxidation in a *Beggiatoa* inhabited marine sediment. *ISME J.* 2007;1:341–53.
68. Warembourg FR. Nitrogen fixation in soil and plant systems. In: Knowles R, Blackburn TH, editors. *Nitrogen Isotope Techniques*. Amsterdam: Elsevier; 1993. p. 127–56.
69. Angel R, Claus P, Conrad R. Methanogenic archaea are globally ubiquitous in aerated soils and become active under wet anoxic conditions. *ISME J.* 2012;6:847–62.
70. Ueda T, Suga Y, Yahiro N, Matsuguchi T. Remarkable N₂-fixing bacterial diversity detected in rice roots by molecular evolutionary analysis of *nifH* gene sequences. *J Bacteriol.* 1995;177:1414–7.
71. Marusina AI, Boulygina ES, Kuznetsov BB, Tourova TP, Kravchenko IK, Gal'chenko VF. A system of oligonucleotide primers for the amplification of *nifH* genes of different taxonomic groups of prokaryotes. *Microbiology.* 2001;70:73–8.
72. Sequencing microbial communities in the ant-plant *Azteca-Cecropia* association. NCBI BioProject PRJNA777006. <https://www.ncbi.nlm.nih.gov/bioproject/PRJNA777006>.
73. Altschul SF, Madden TL, Schäffer AA, Zhang J, Zhang Z, Miller W, et al. Gapped BLAST and PSI-BLAST: a new generation of protein database search programs. *Nucleic Acids Res.* 1997;25:3389–402.
74. Pruitt KD, Tatusova T, Maglott DR. NCBI reference sequences (RefSeq): a curated non-redundant sequence database of genomes, transcripts and proteins. *Nucleic Acids Res.* 2007;35:501–4.
75. Frank IE, Turk-Kubo KA, Zehr JP. Rapid annotation of *nifH* gene sequences using classification and regression trees facilitates environmental functional gene analysis. *Environ Microbiol Rep.* 2016;8:905–16.
76. Walters W, Hyde ER, Berg-lyons D, Ackermann G, Humphrey G, Parada A, et al. Improved bacterial 16S rRNA gene (V4 and V4-5) and fungal internal transcribed spacer marker gene primers for microbial community surveys. *mSystems.* 2015;1:e0009–15.
77. Větrovský T, Baldrian P. The variability of the 16S rRNA gene in bacterial genomes and its consequences for bacterial community analyses. *PLoS One.* 2013;8:e57923.
78. Sun DL, Jiang X, Wu QL, Zhou NY. Intragenomic heterogeneity of 16S rRNA genes causes overestimation of prokaryotic diversity. *Appl Environ Microbiol.* 2013;79:5962–9.
79. Wang S-Z, Chen J-S, Johnson JL. The presence of five *nifH*-like sequences in *Clostridium pasteurianum*: sequence divergence and transcription properties. *Nucleic Acids Res.* 1988;16:439–54.
80. Okazaki S, Noisangiam R, Okubo T, Kaneko T, Oshima K, Hattori M, et al. Genome analysis of a novel *Bradyrhizobium* sp. DOA9 carrying a symbiotic plasmid. *PLoS One.* 2015;10:e0117392.
81. McRose DL, Zhang X, Kraepiel AML, Morel FMM. Diversity and activity of alternative nitrogenases in sequenced genomes and coastal environments. *Front Microbiol.* 2017;8:267.
82. R Core Team. R. A language and environment for statistical computing; 2018. <https://www.r-project.org/>
83. Wickham H. *ggplot2: elegant graphics for data analysis*. New York: Springer-Verlag; 2016. <https://ggplot2.tidyverse.org>
84. Oksanen J, Blanchet FG, Friendly M, Kindt R, Legendre P, McGlenn D, et al. *vegan: community ecology package*; 2019. <https://cran.r-project.org/package=vegan>.
85. McArdle BH, Anderson MJ, Ecology S, Jan N. Fitting multivariate models to community data: a comment on distance-based redundancy analysis. *Ecology.* 2001;82:290–7.
86. McMurdie PJ, Holmes S. phyloseq: an R package for reproducible interactive analysis and graphics of microbiome census data. *PLoS One.* 2013;8:e61217.
87. Lahti L, Shetty S. Tools for microbiome analysis in R. 2017. <https://microbiome.github.io/tutorials/>.
88. Community analysis scripts in mnepel/nitrogen_fixation_arboreal_ant_nests. GitHub. 2022. https://github.com/mnepel/nitrogen_fixation_arboreal_ant_nests.

Publisher's Note

Springer Nature remains neutral with regard to jurisdictional claims in published maps and institutional affiliations.

Ready to submit your research? Choose BMC and benefit from:

- fast, convenient online submission
- thorough peer review by experienced researchers in your field
- rapid publication on acceptance
- support for research data, including large and complex data types
- gold Open Access which fosters wider collaboration and increased citations
- maximum visibility for your research: over 100M website views per year

At BMC, research is always in progress.

Learn more biomedcentral.com/submissions

