

Visuelle Soziologie – Eine fotografische Ethnografie zu  
Veränderungen im kubanischen Alltagsleben  
- Teil I: Bildband -

Dissertation zur Erlangung des akademischen Grades  
eines Doktors der Sozialwissenschaften (Dr. rer. soc.)

an der Universität Konstanz  
Geisteswissenschaftliche Sektion: Fachbereich Geschichte und Soziologie

vorgelegt von

Sybilla Tinapp

August 2005

Tag der mündlichen Prüfung: 16.02.2006

1. Gutachter: Prof. Dr. Hans-Georg Soeffner
2. Gutachter: Prof. Dr. Werner Georg

# INHALT

## 1. FOTOSEQUENZEN

Fotosequenz I	S. 2
Fotosequenz II	S. 10
Fotosequenz III	S. 30
Fotosequenz IV	S. 43
Fotosequenz Va, Vb	S. 74
Fotosequenz VI	S. 120
Fotosequenz VII	S. 144

<b>2. ANHANG</b>	S. 149
------------------	--------

# Fotosequenz I







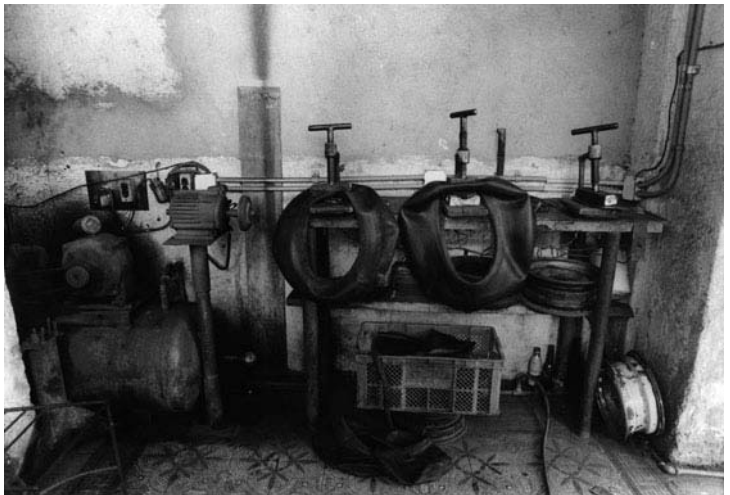
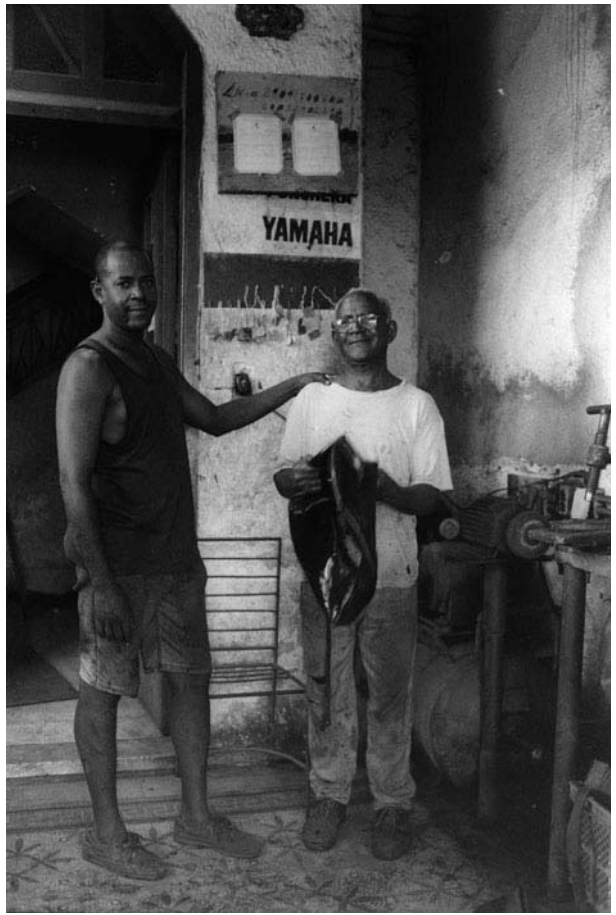


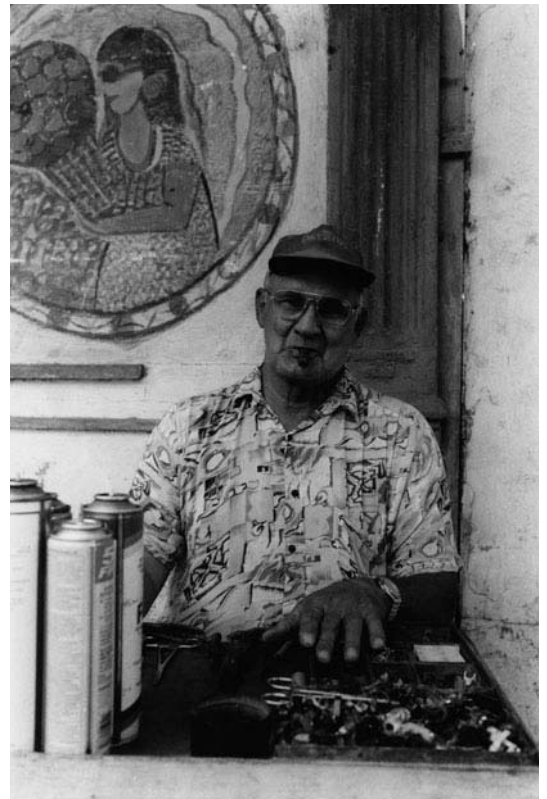






## Fotosequenz II















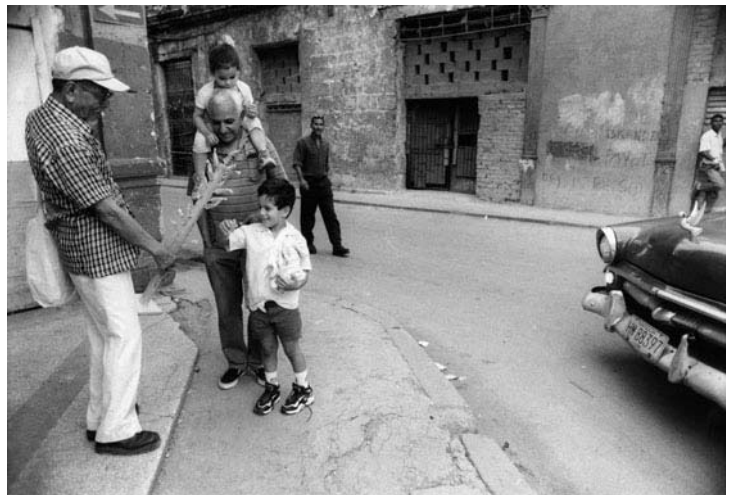






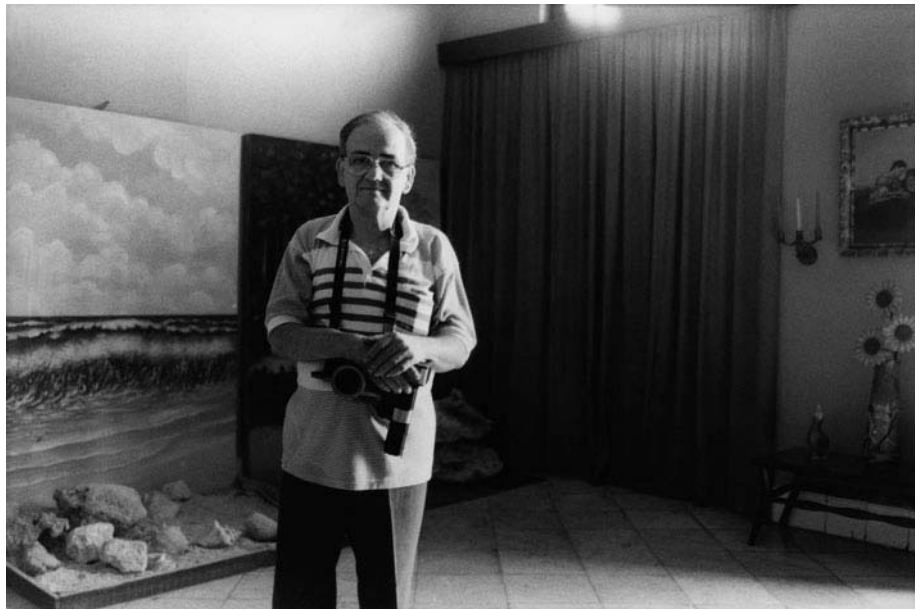




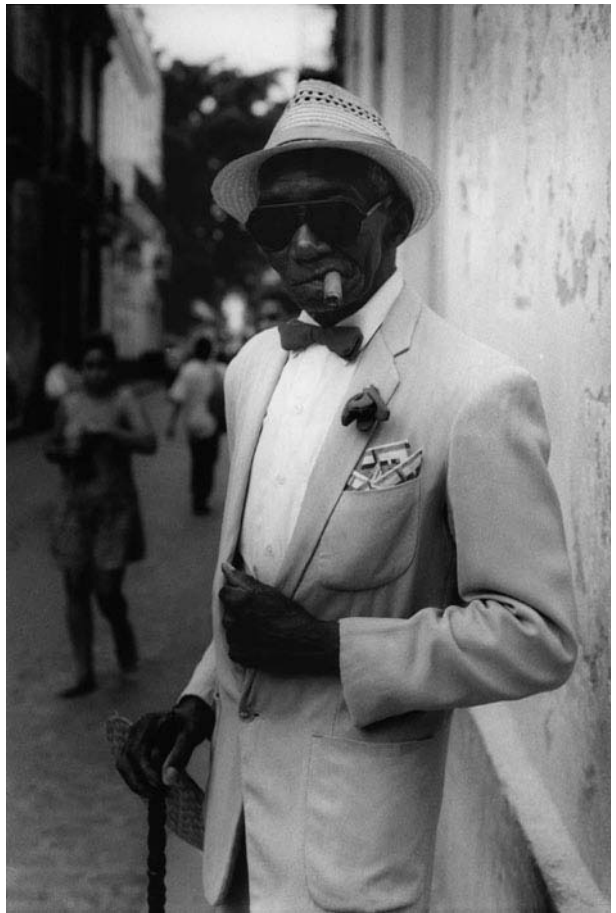






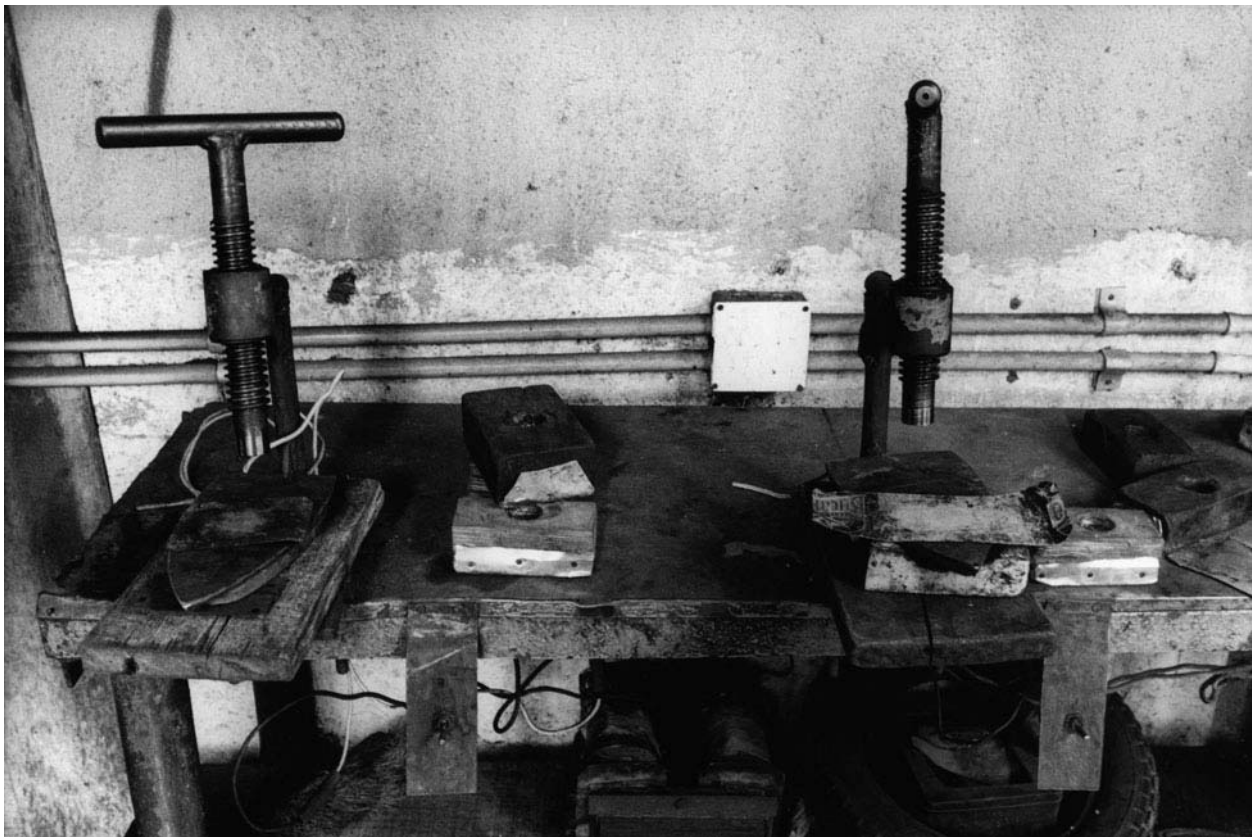


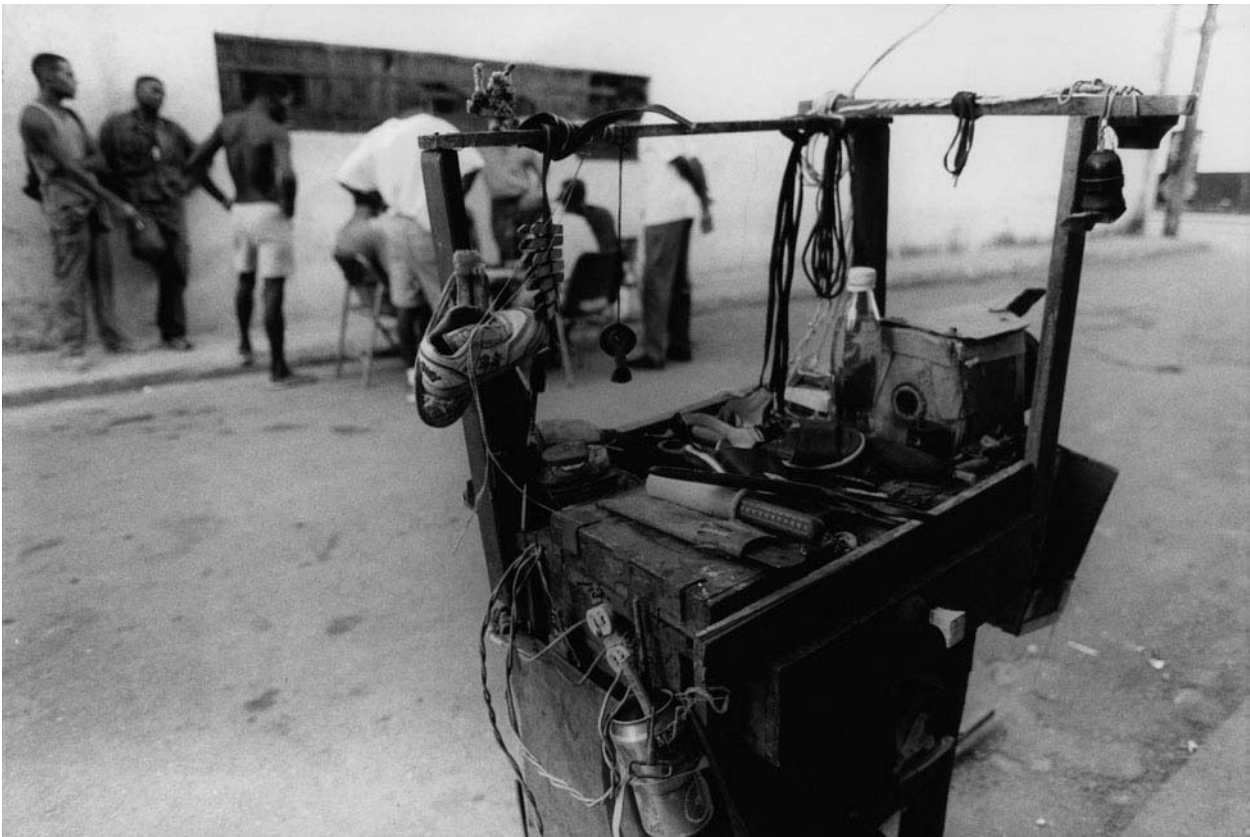






## Fotosequenz III



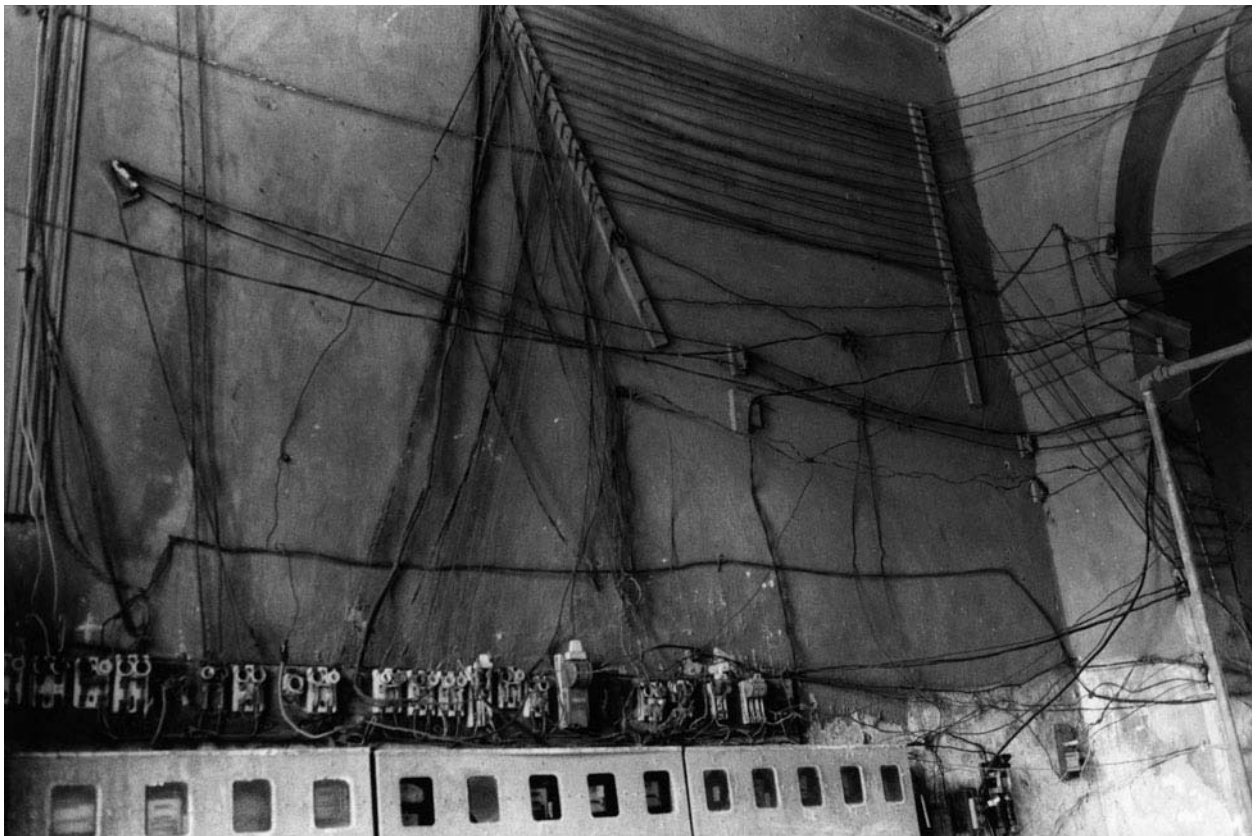


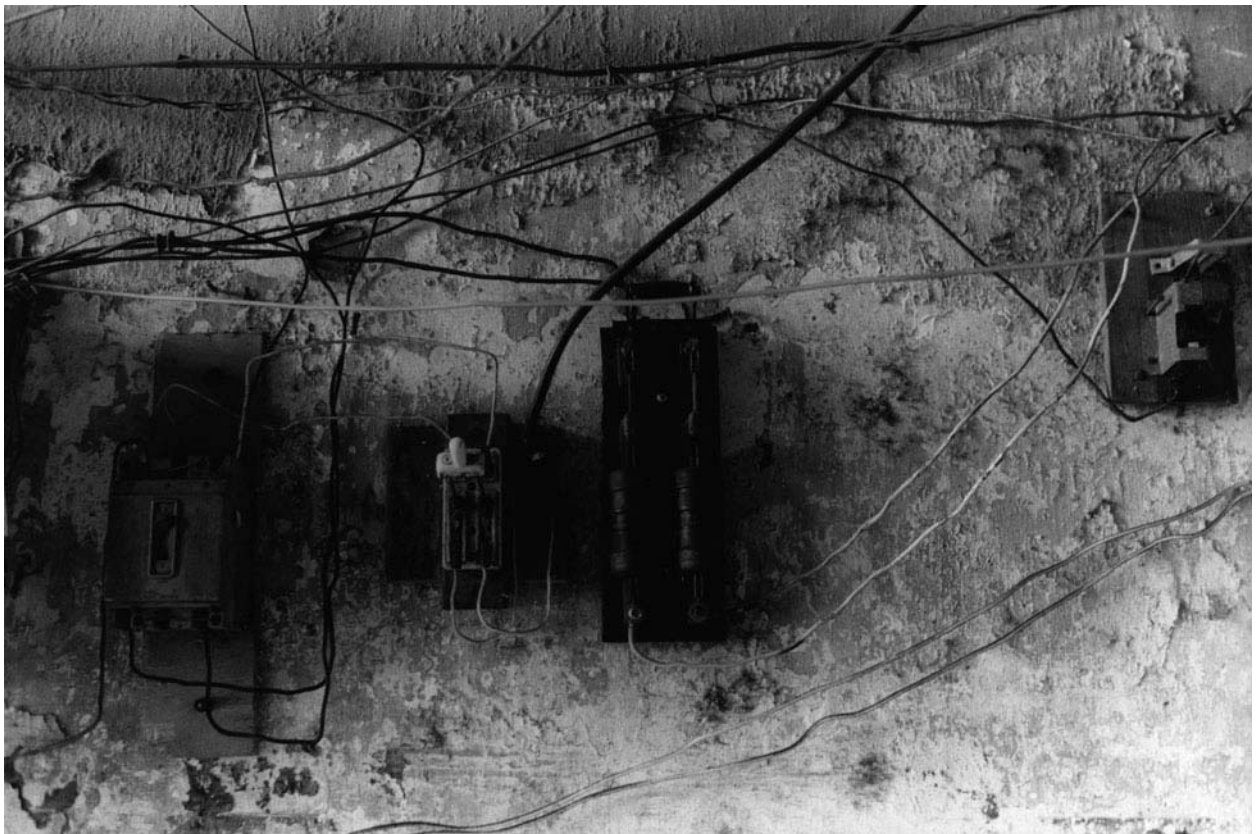
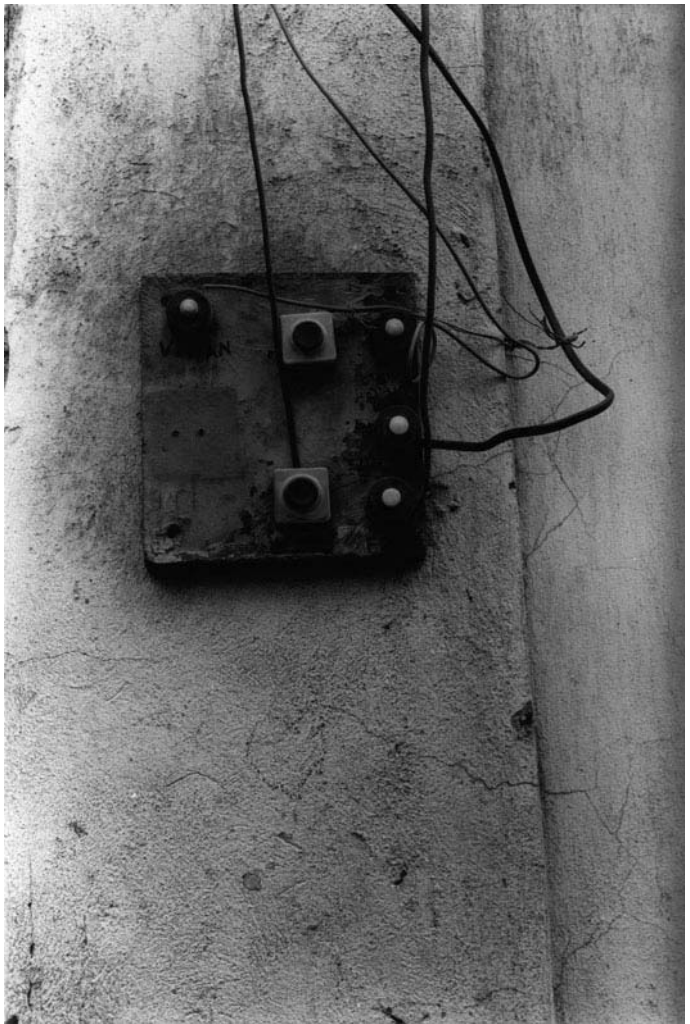


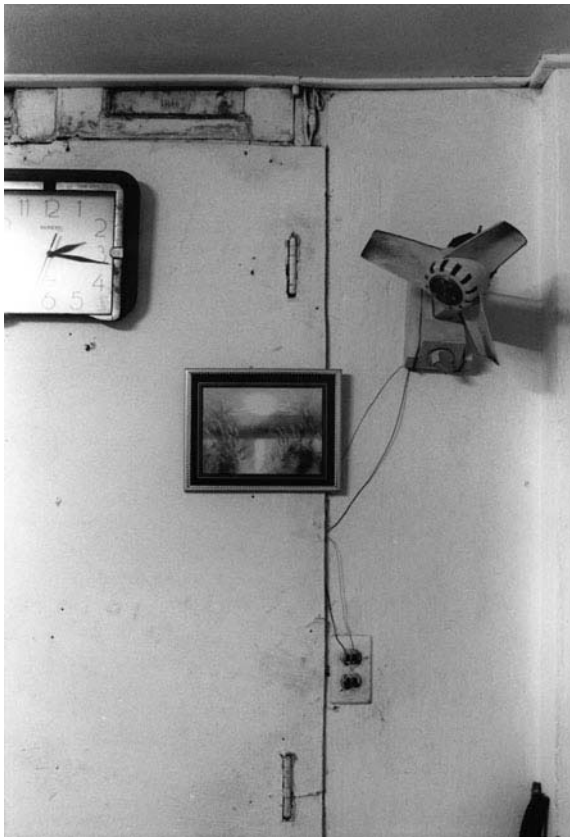






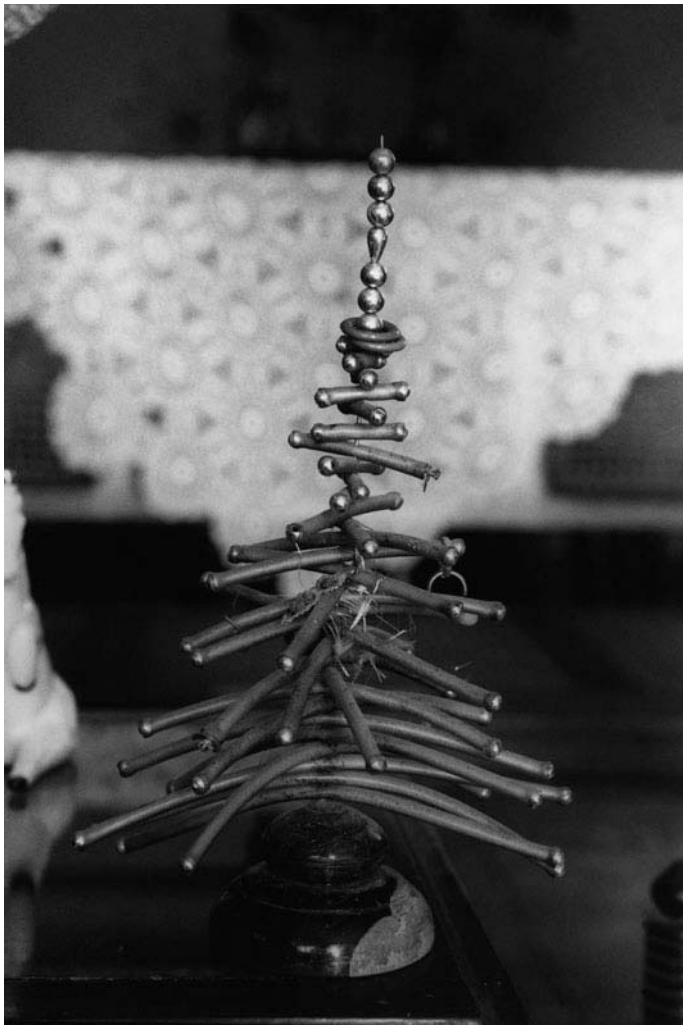












## Fotosequenz IV

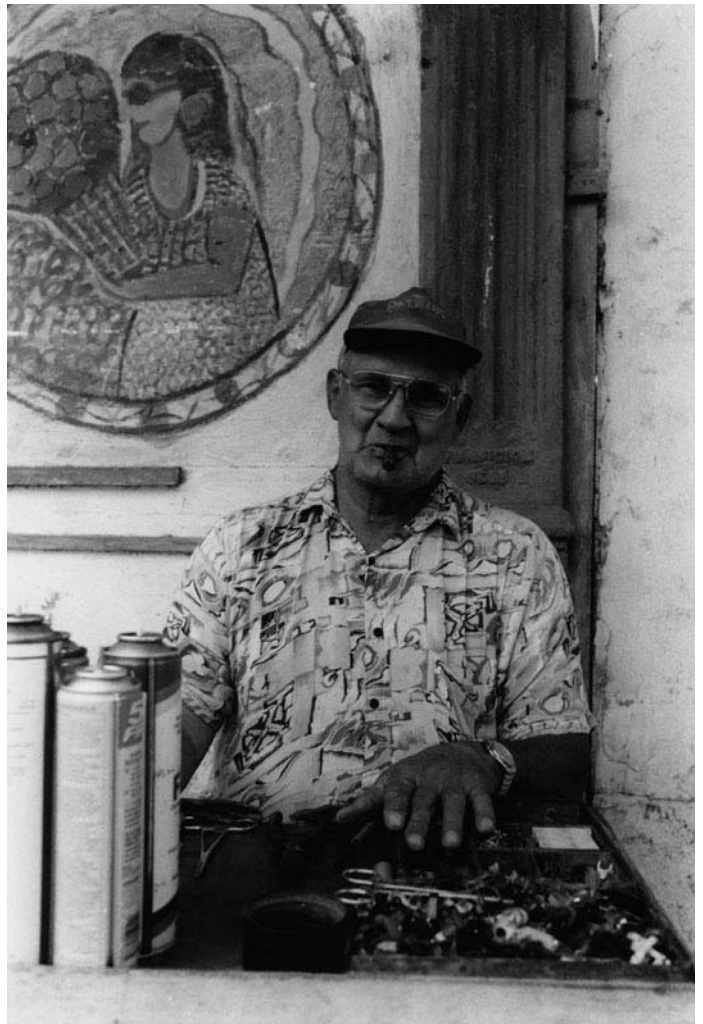


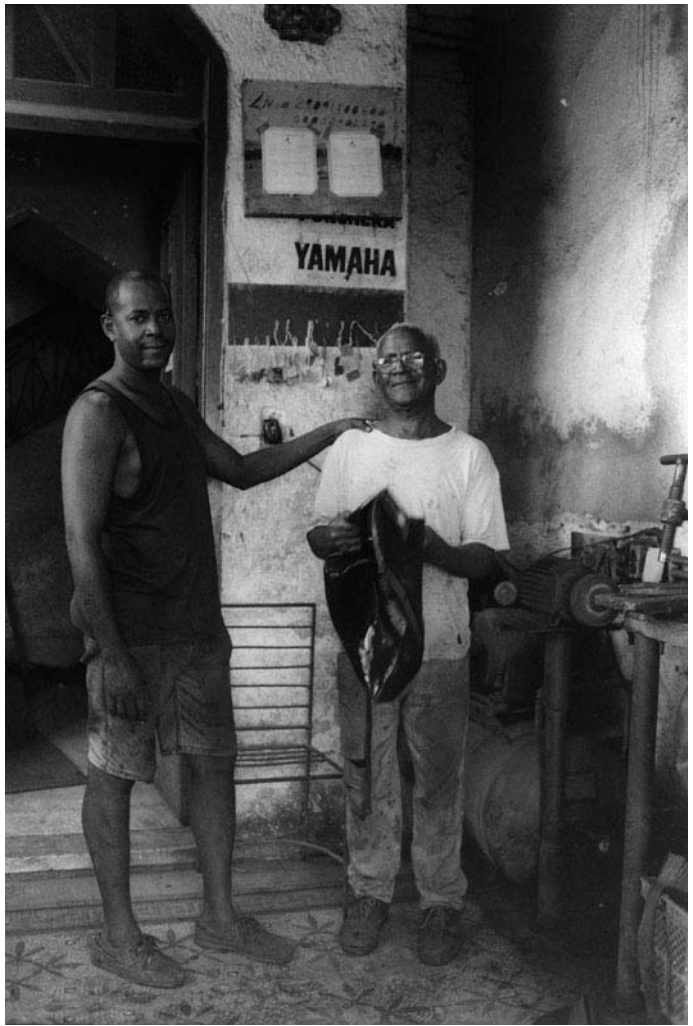


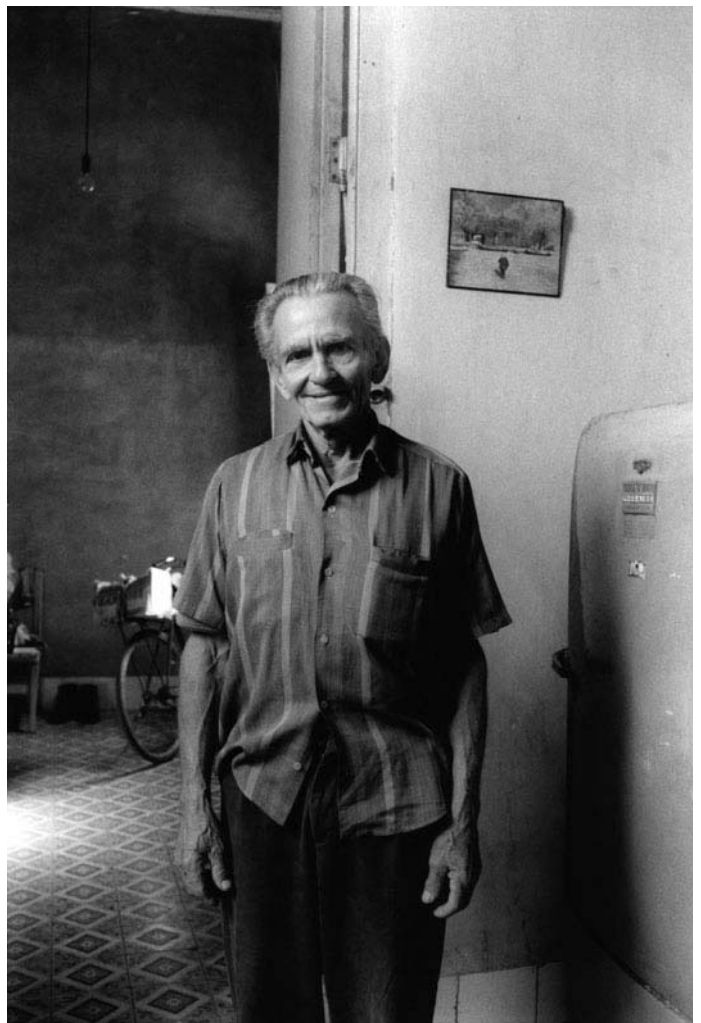


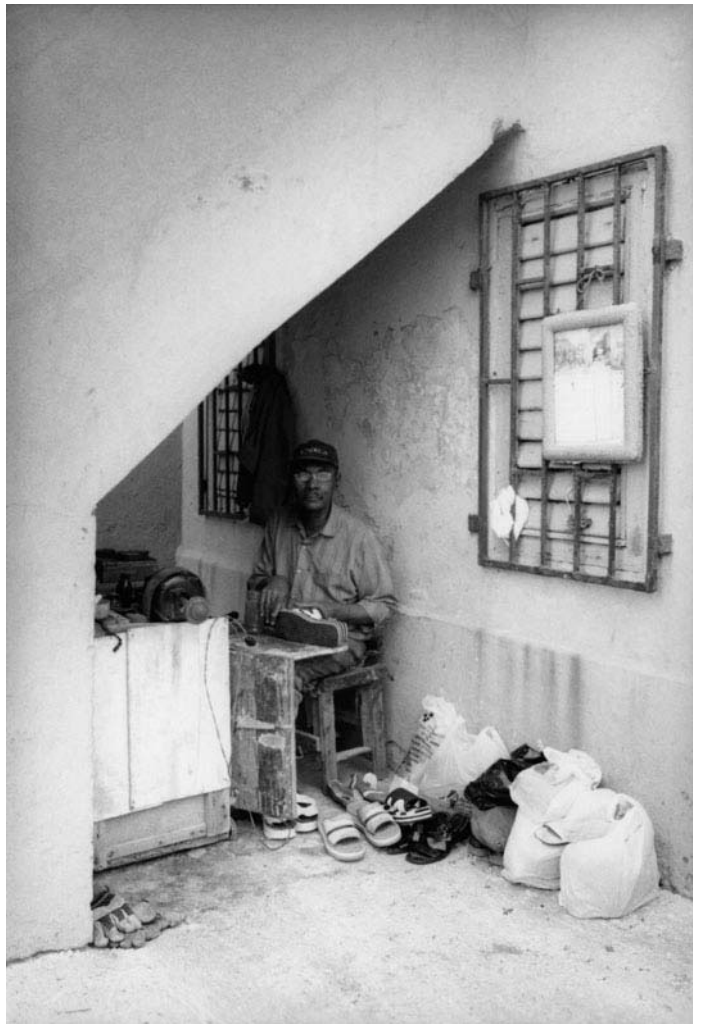


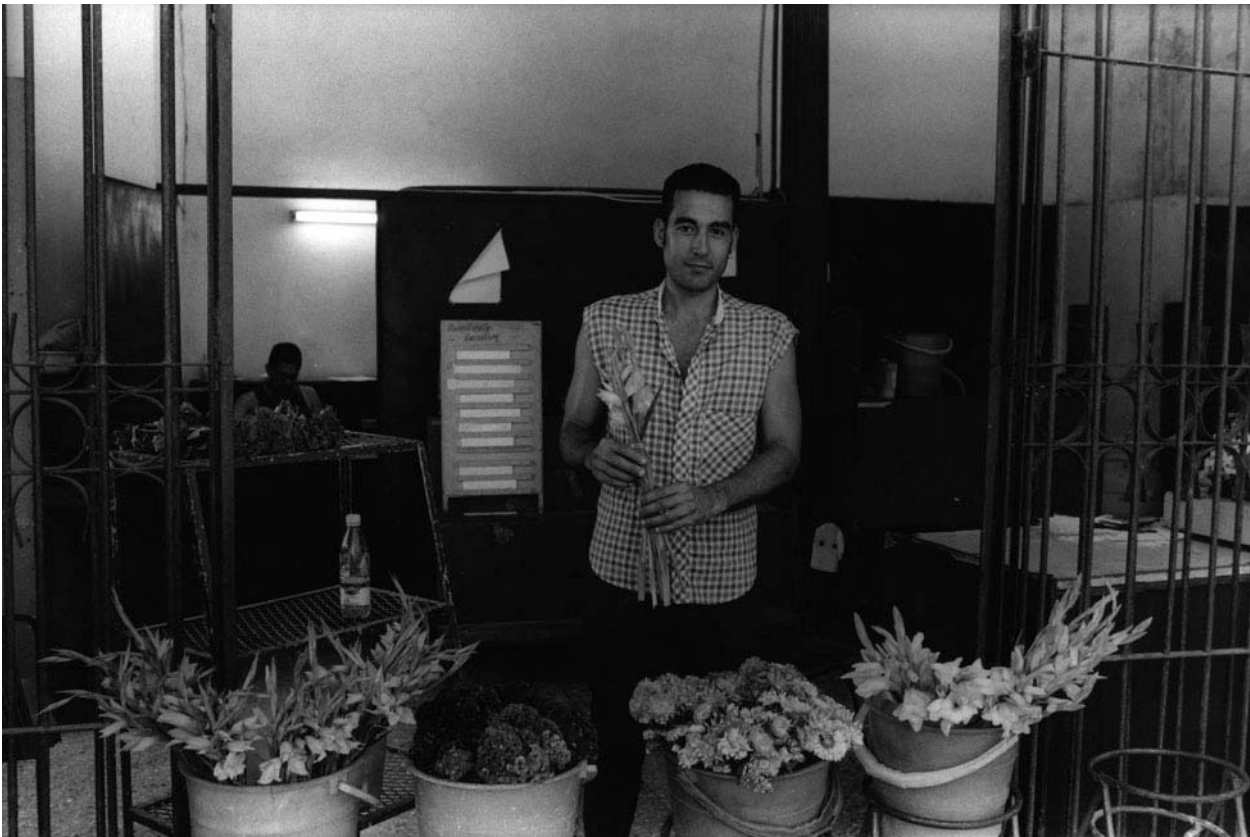






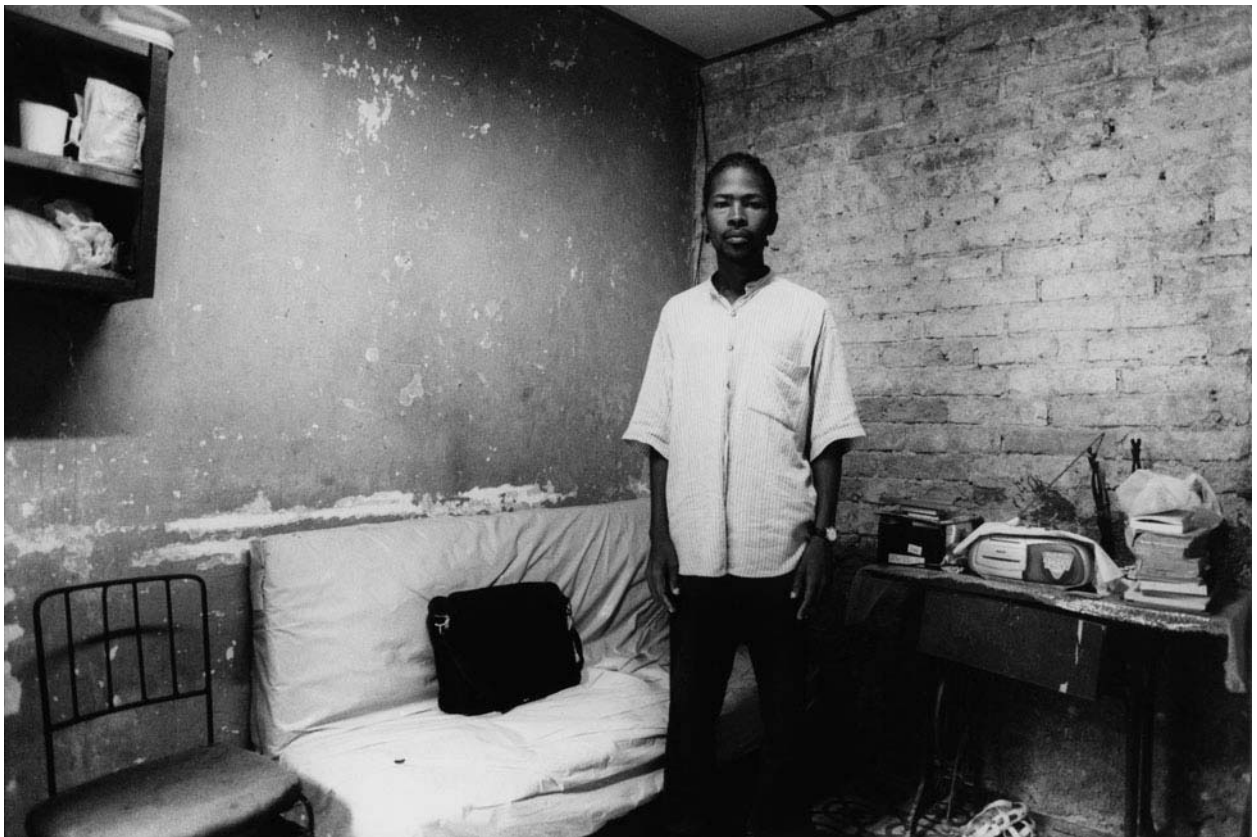
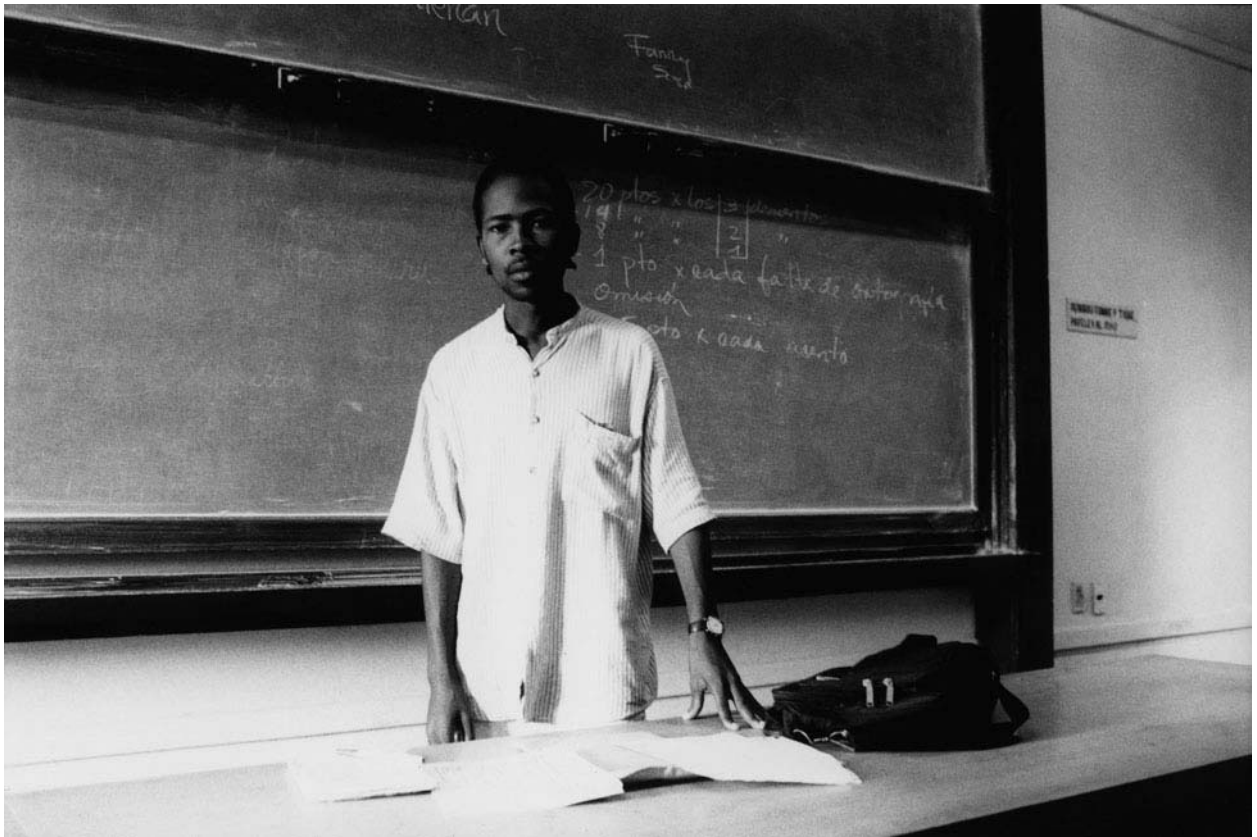






















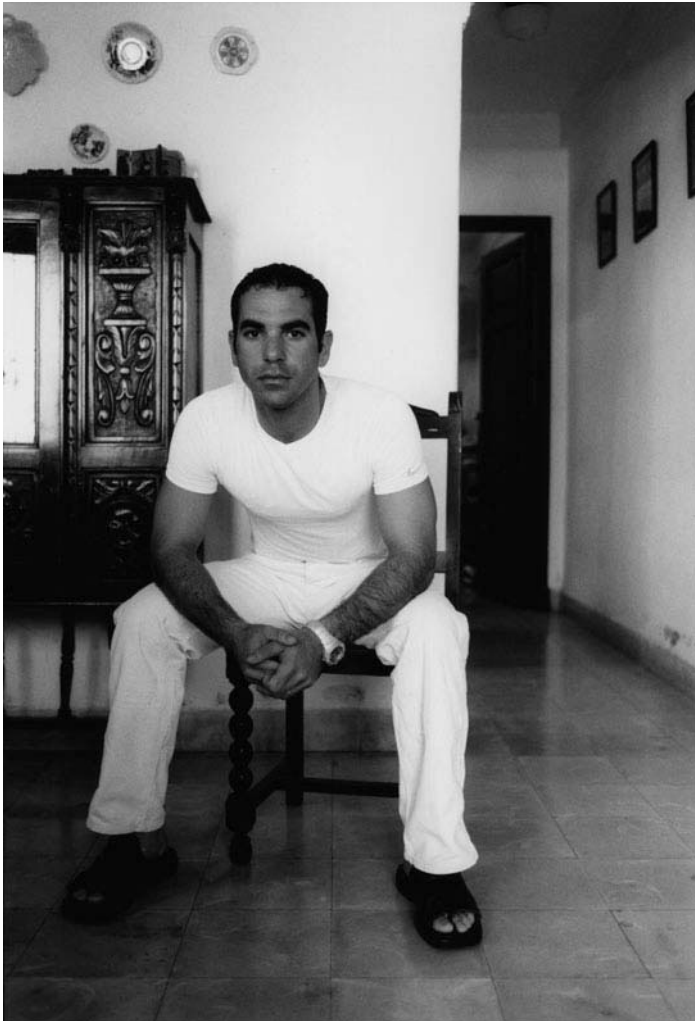


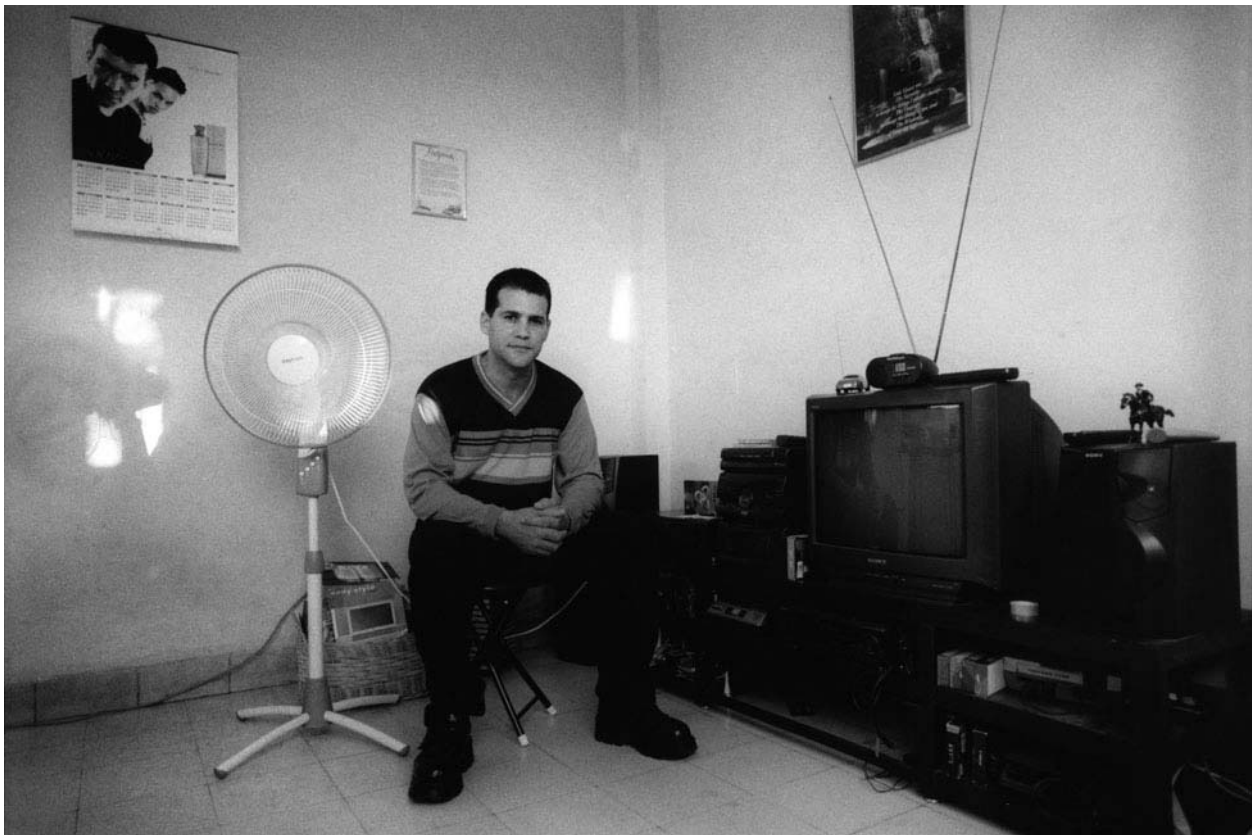






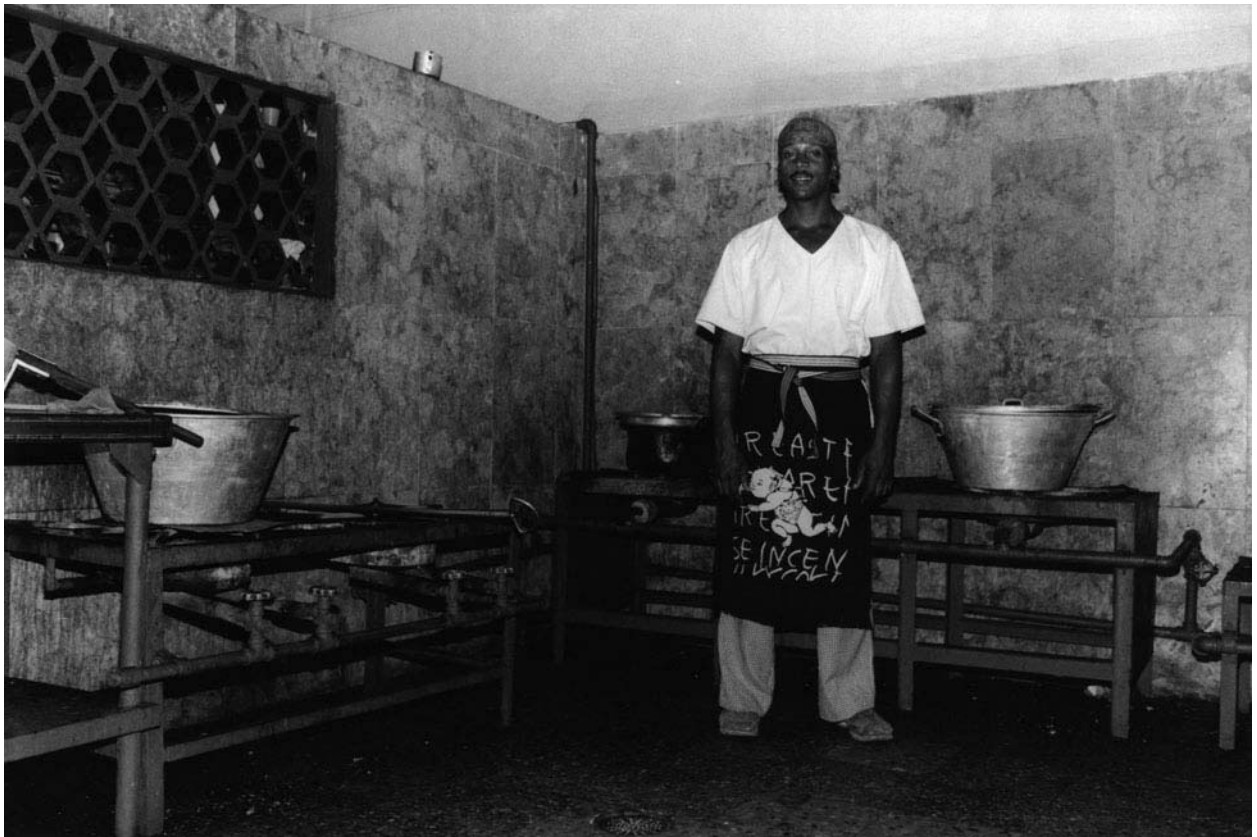








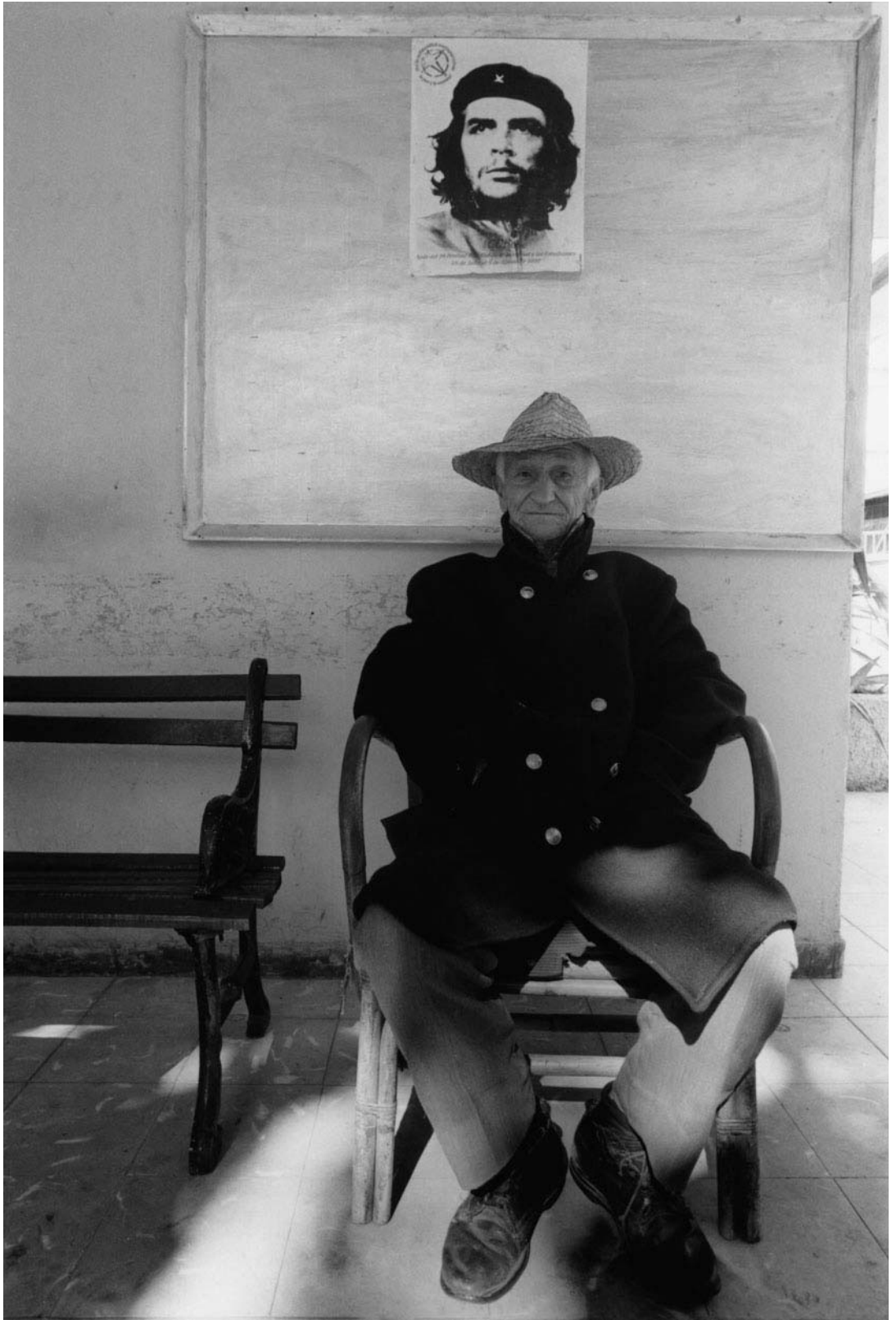








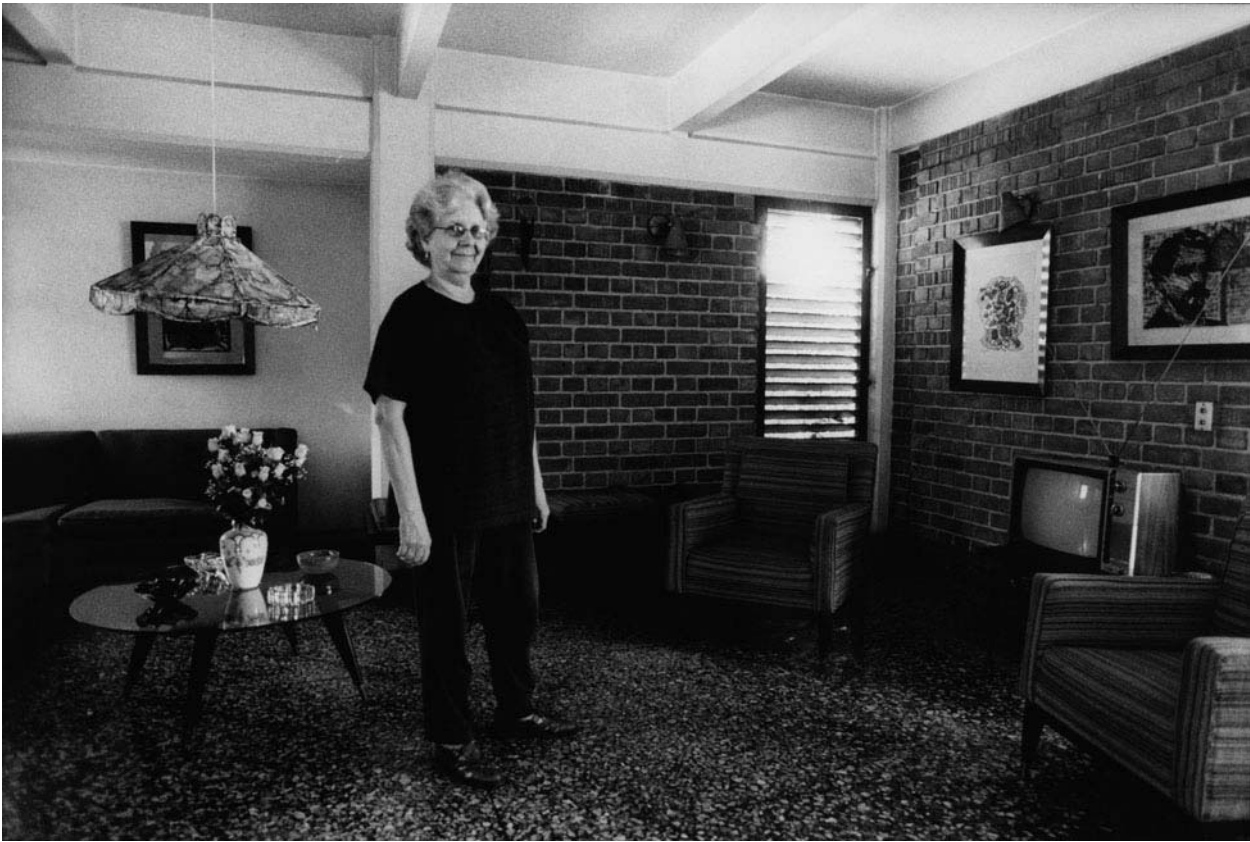
Fotosequenz Va



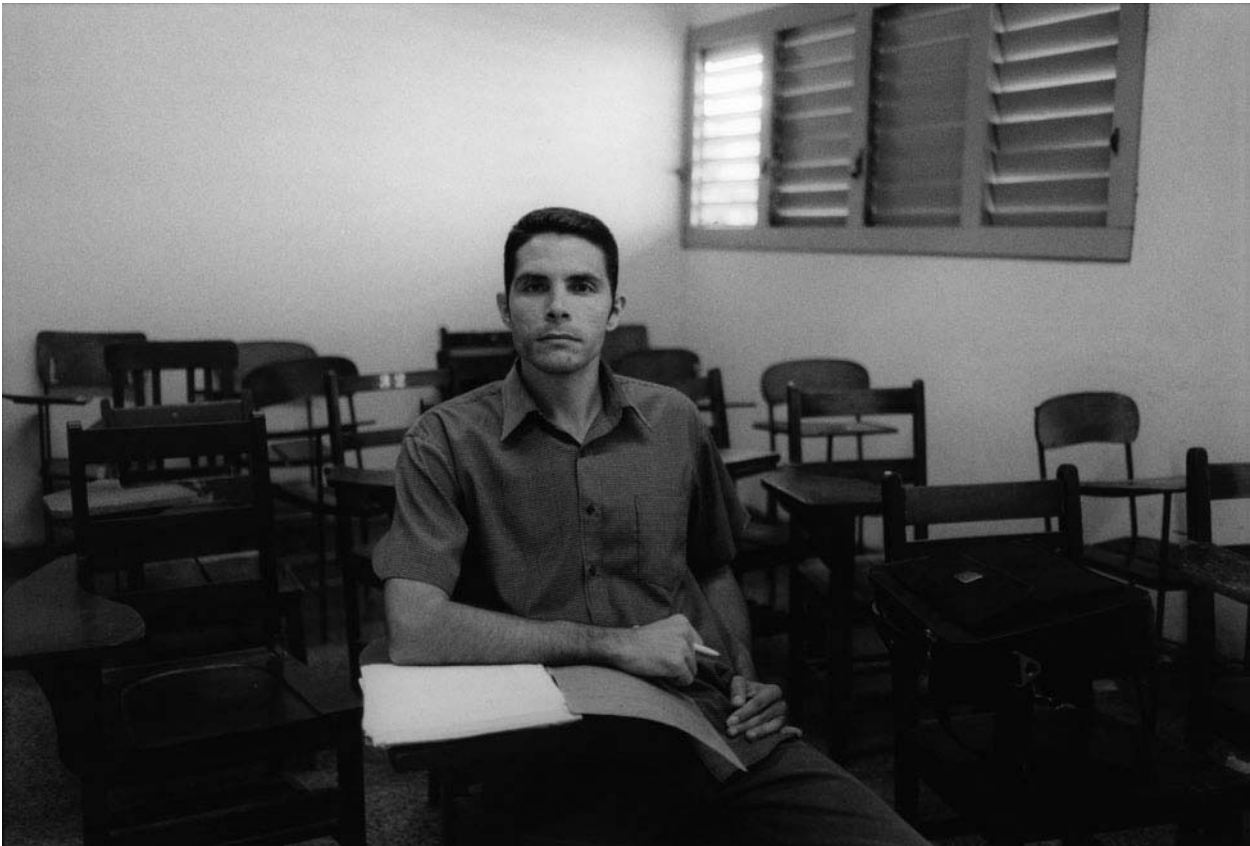




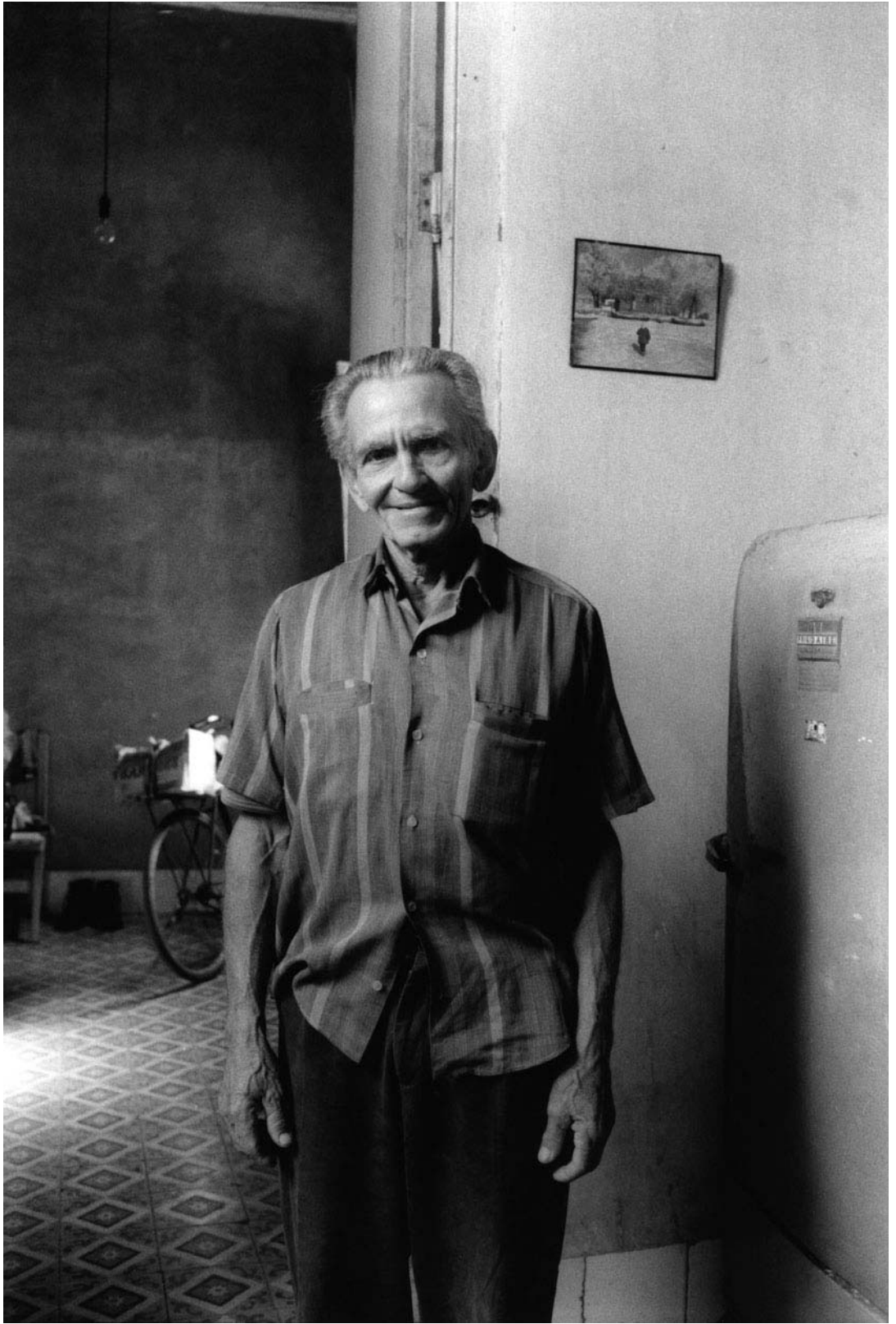








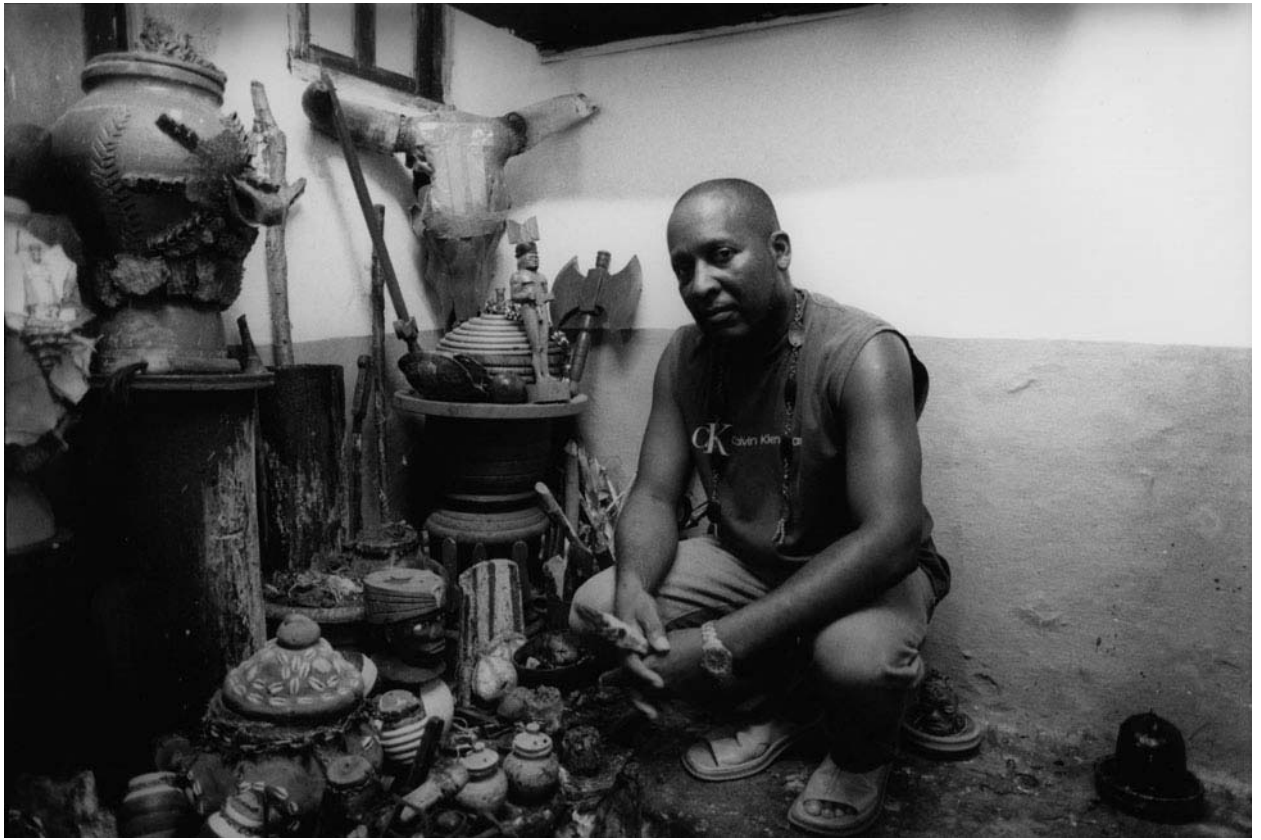
















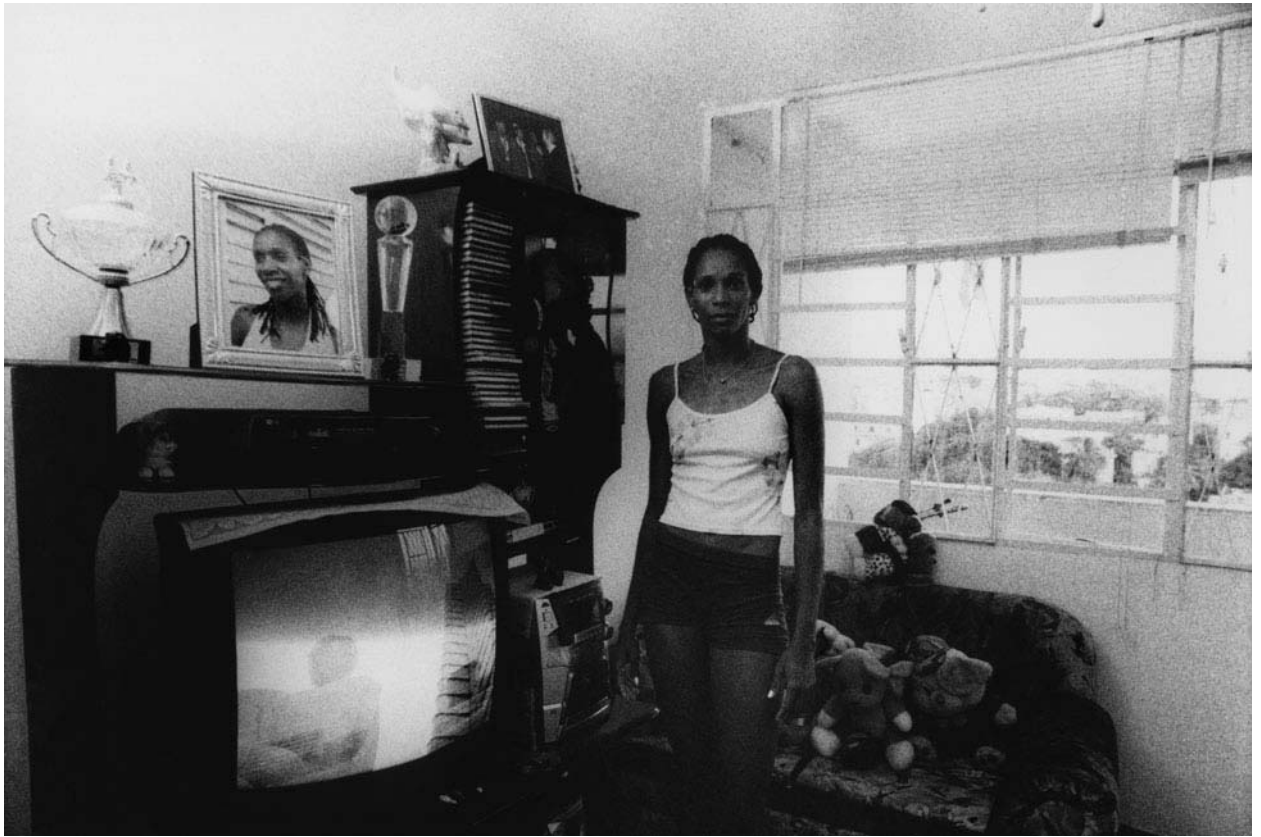












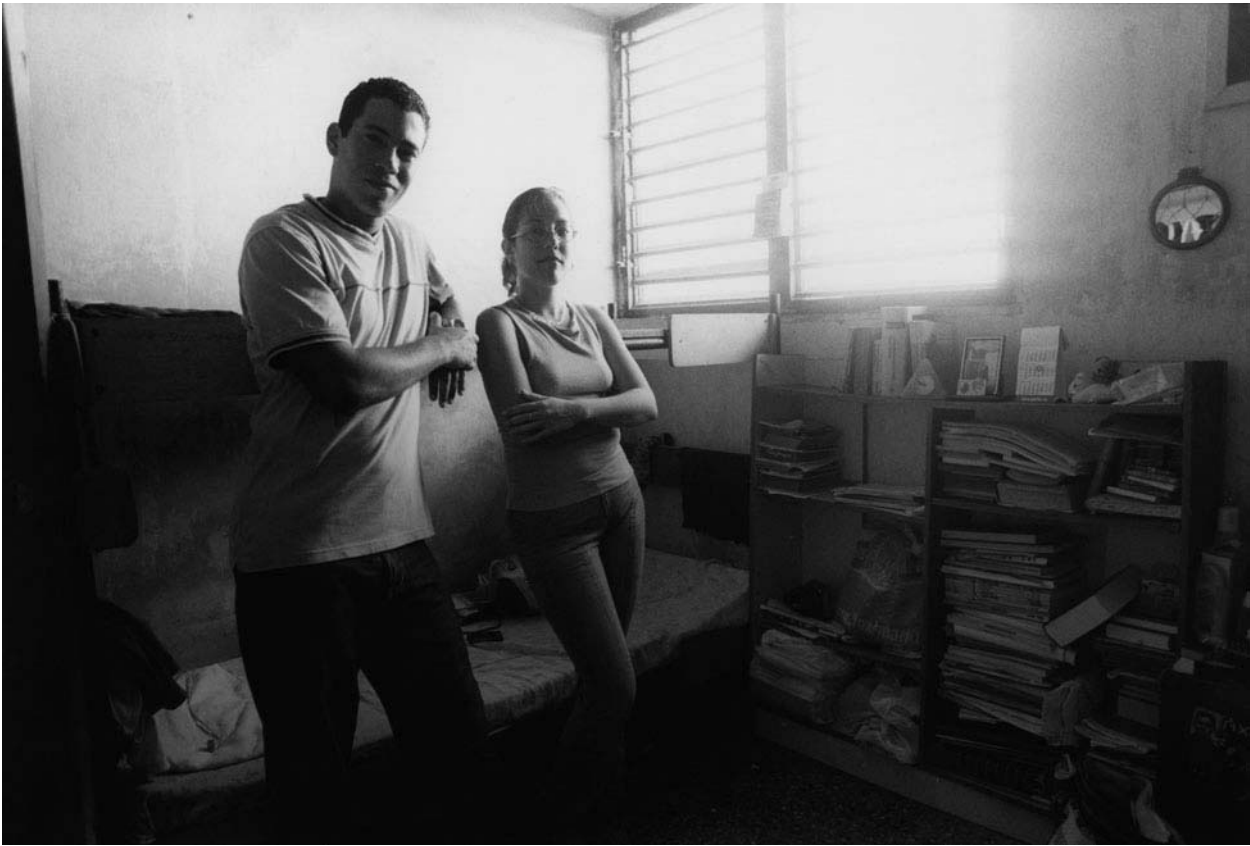


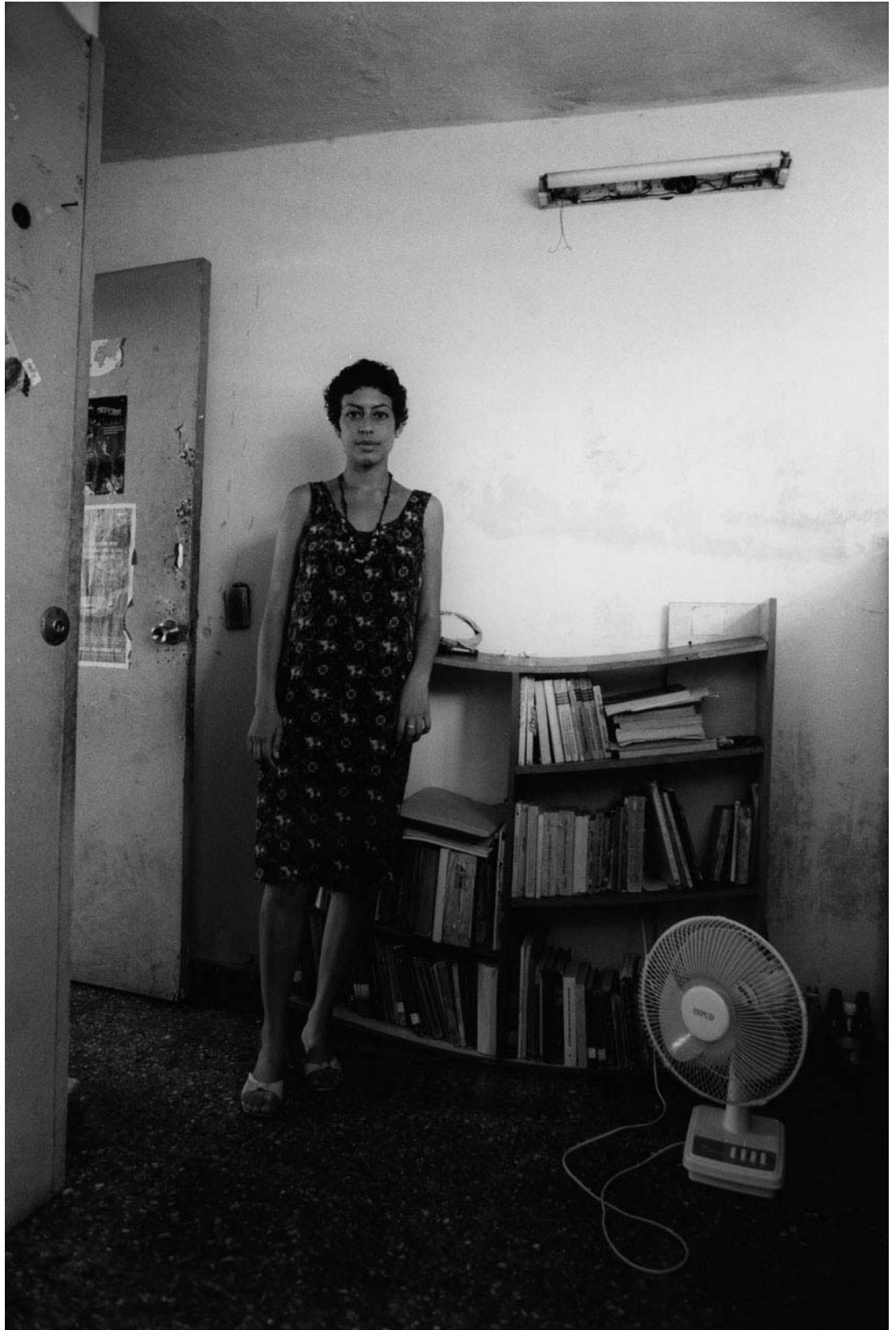


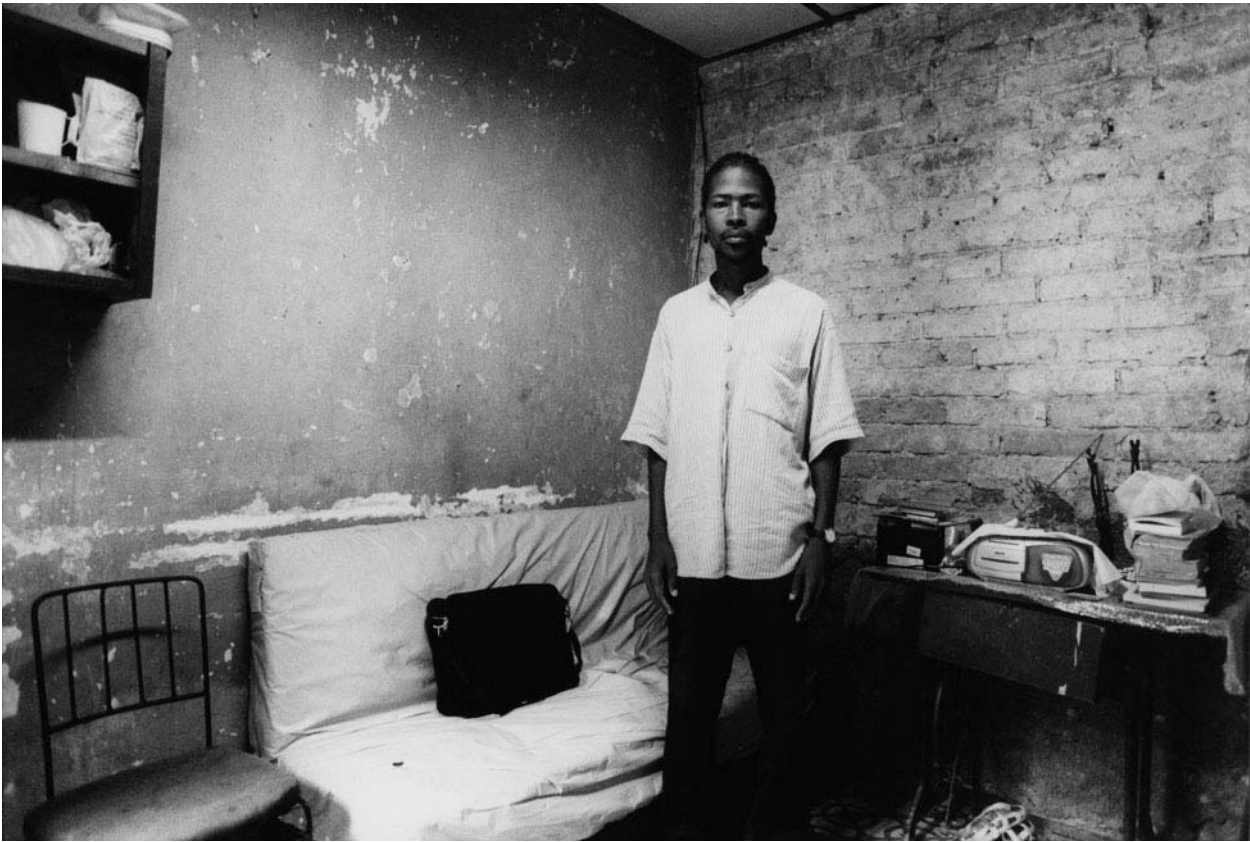
Fotosequenz Vb











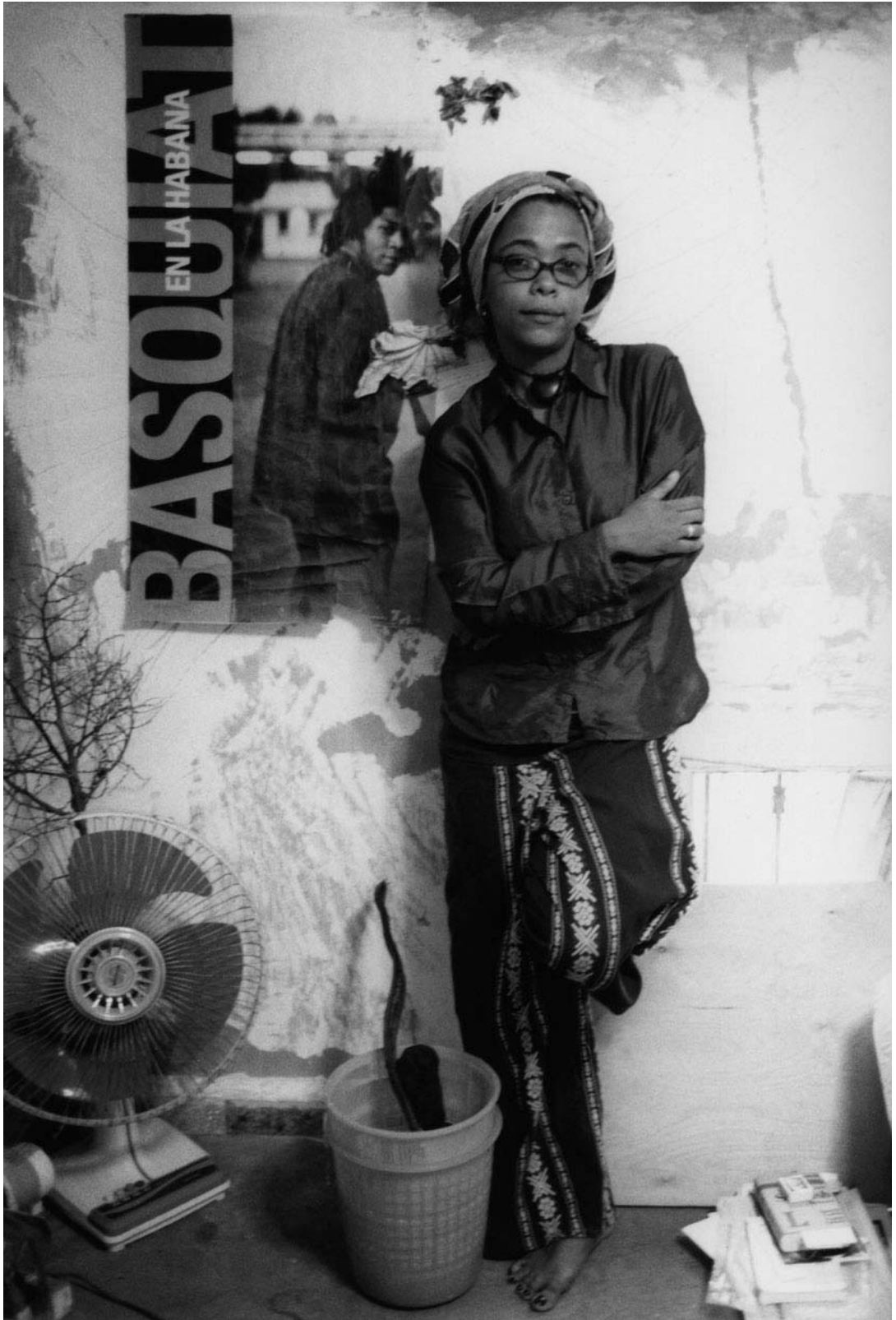






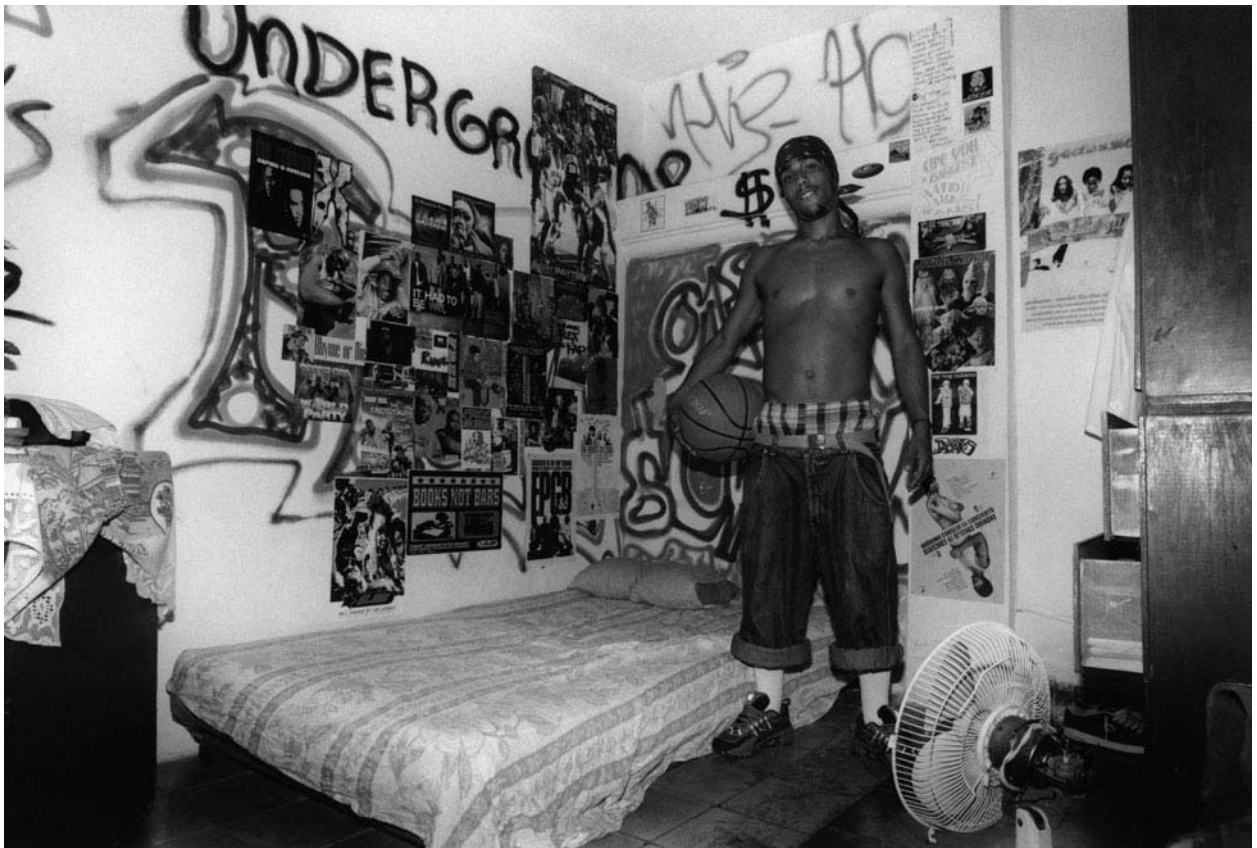






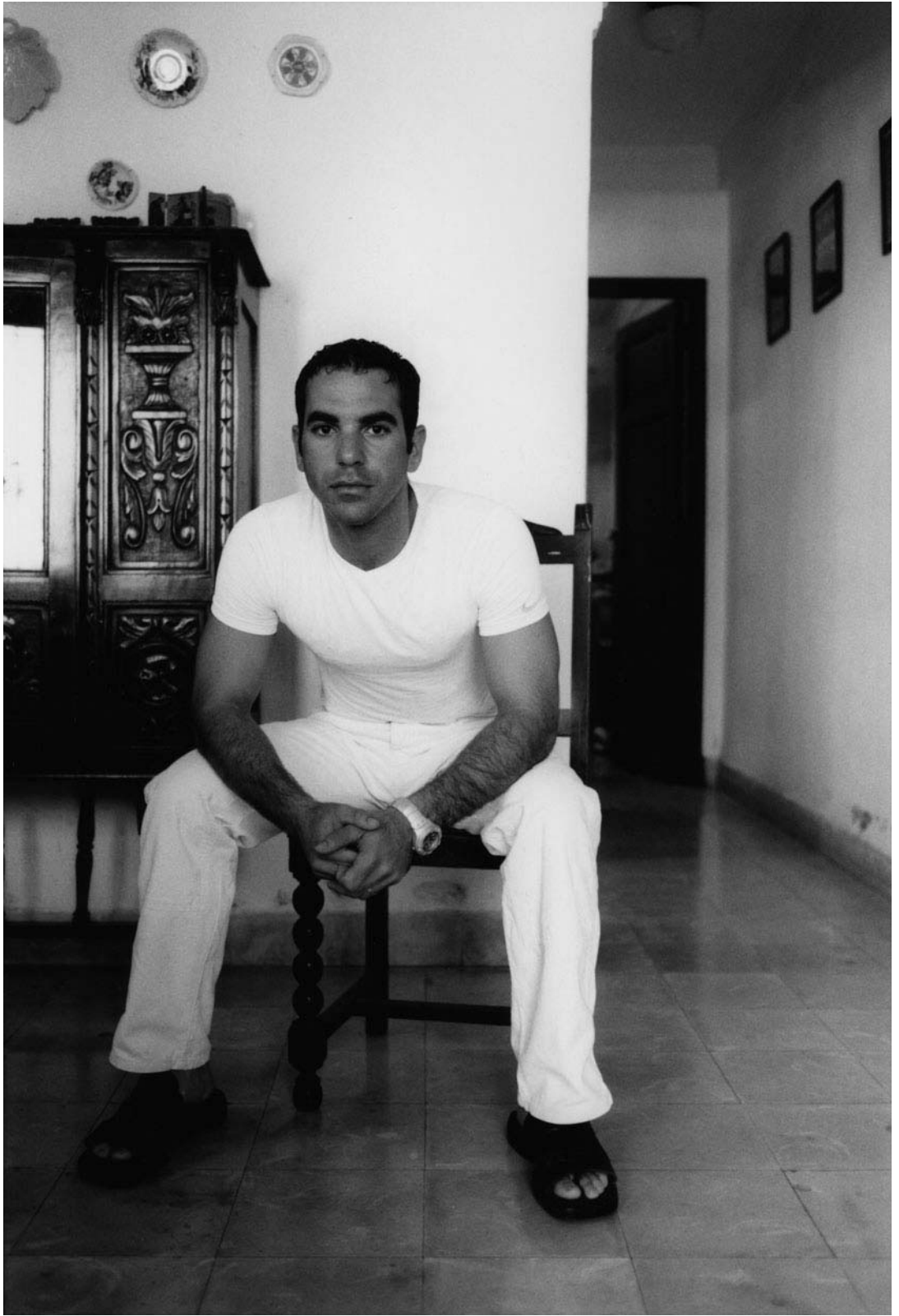




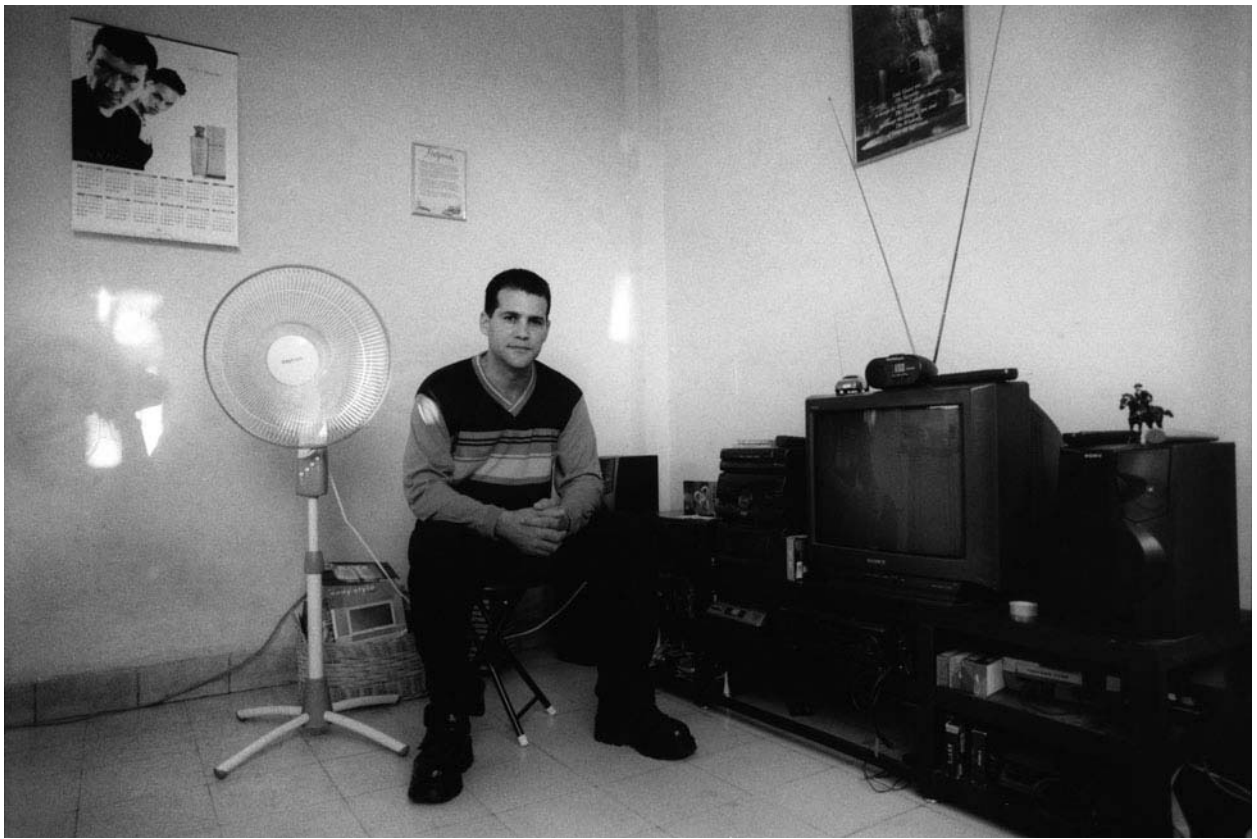




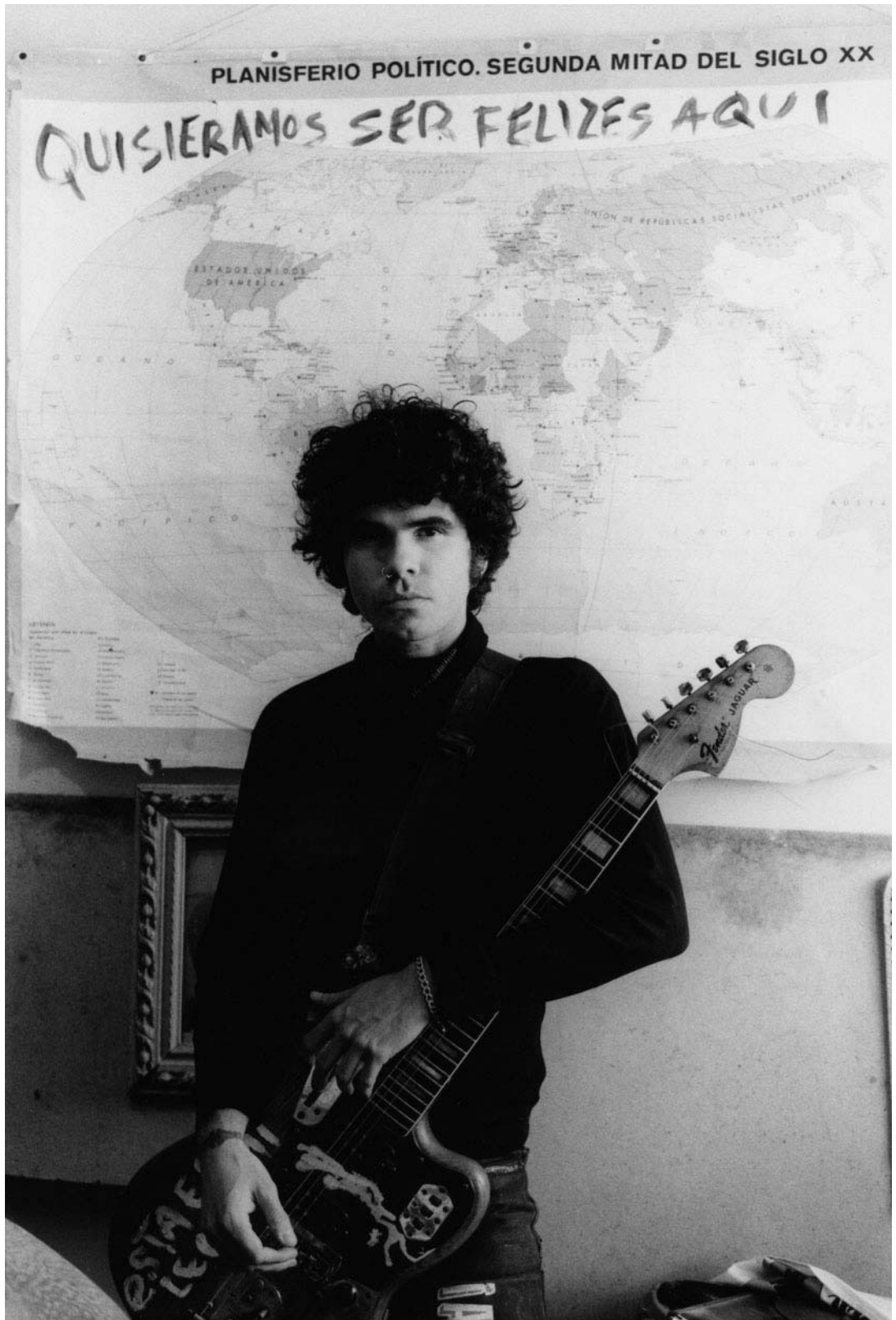




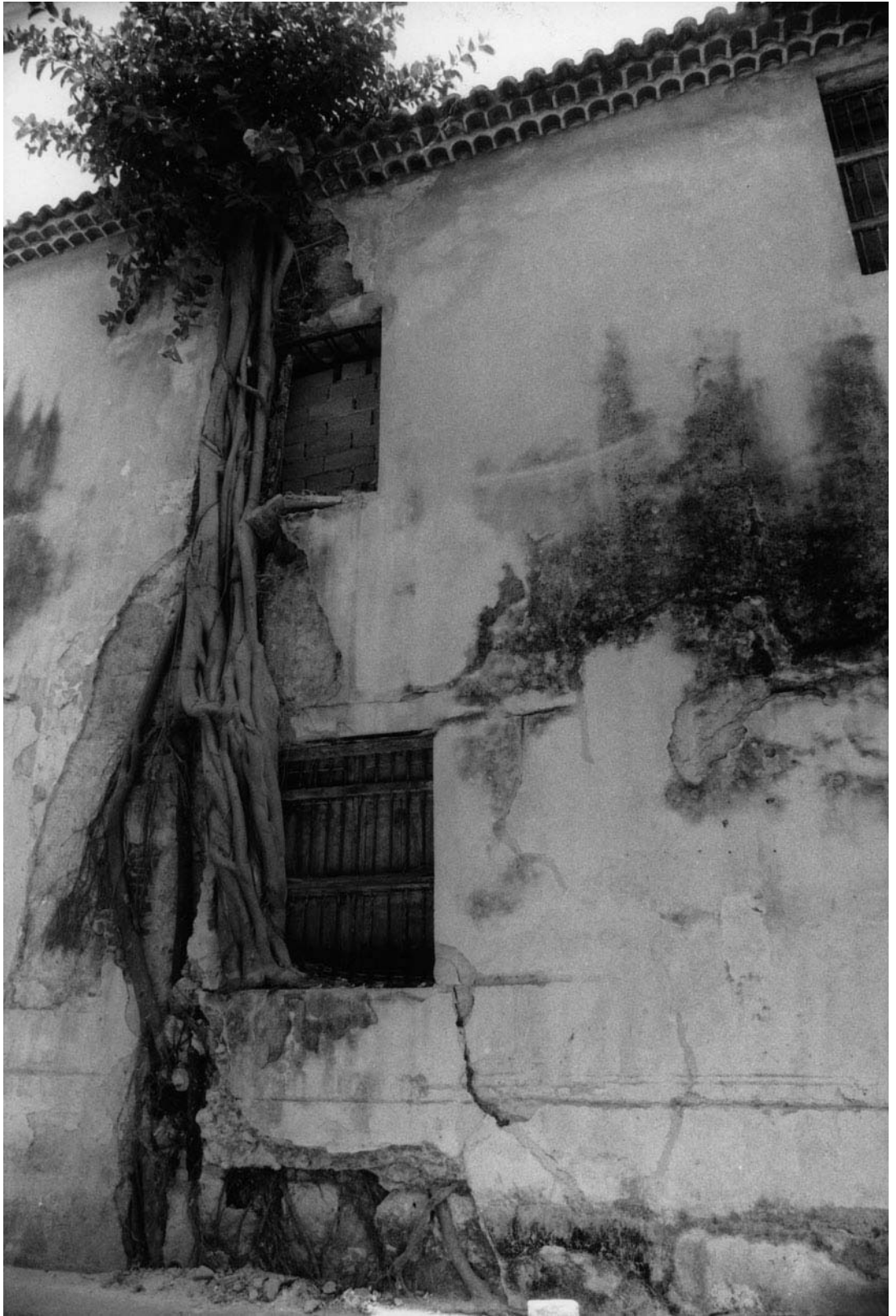








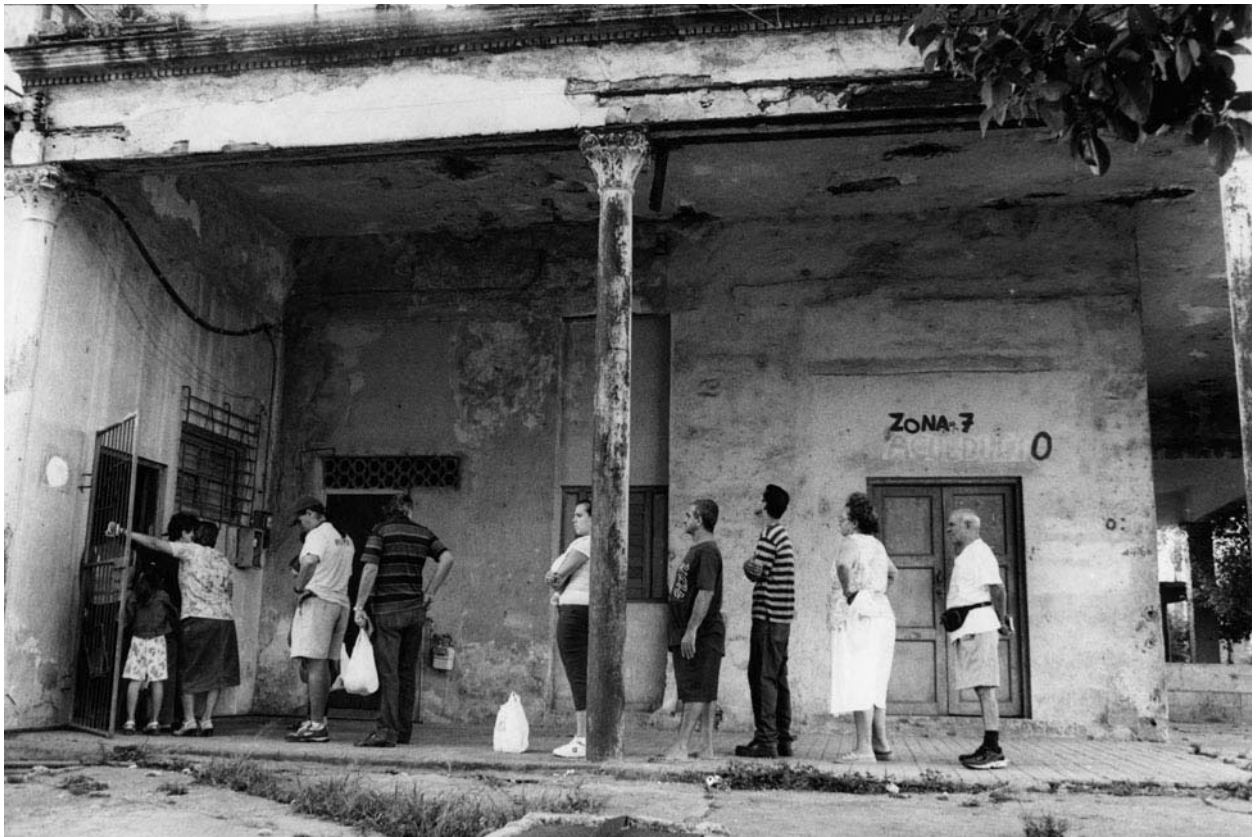
## Fotosequenz VI

















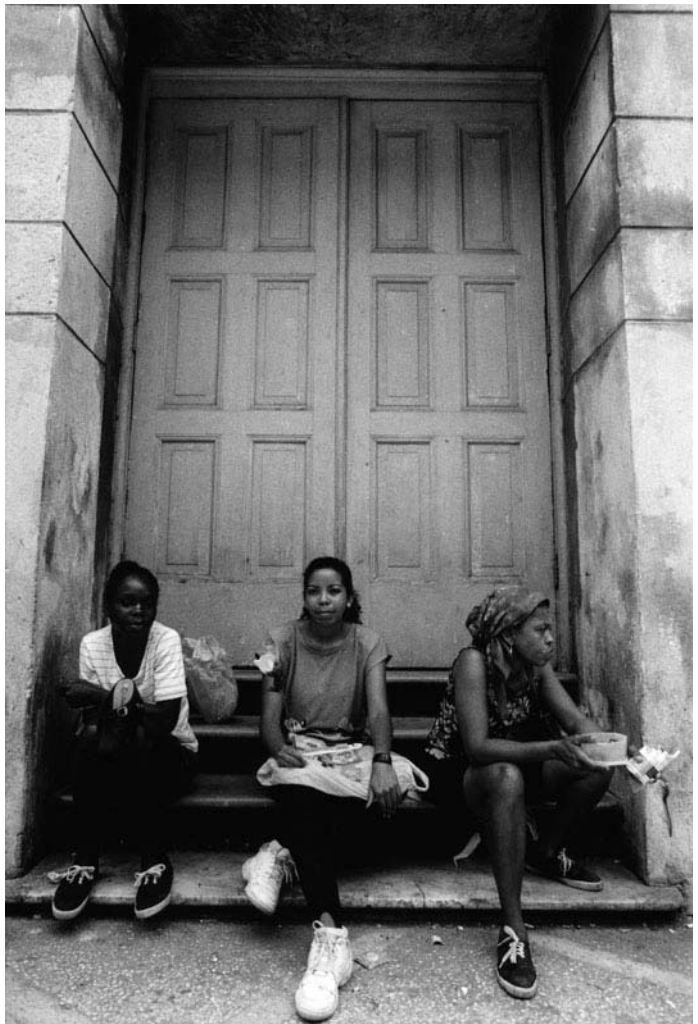






















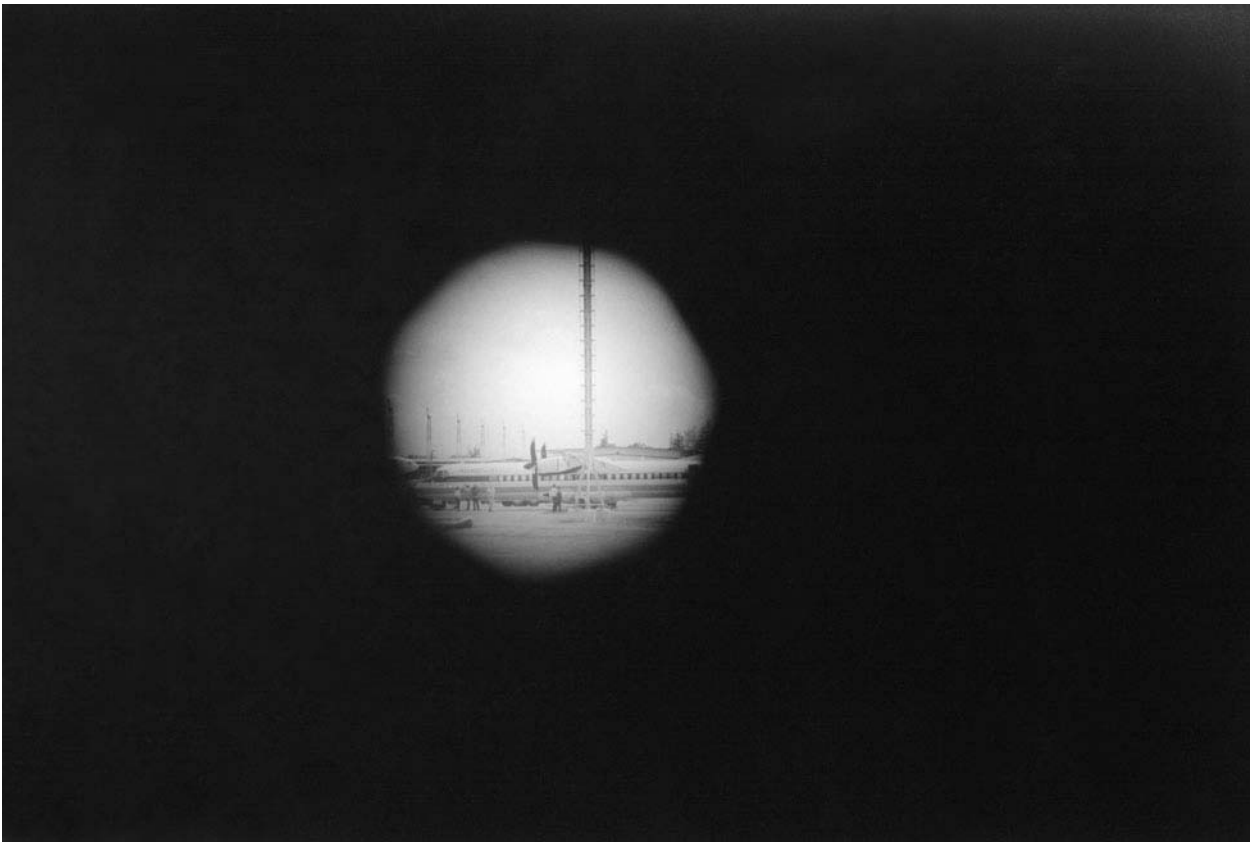








## Fotosequenz VII











Anhang







DELTA 400 PROFESSIONAL

4 0 2 7

ILFORD

DELTA 400 PROFESSIONAL

4 0 2 7

ILFORD

DELTA 400 PROFESSIONAL

4 0 2 7

ILFORD

DELTA 400 PROFFE

SSIONAL

4 0 2 7

ILFORD

DELTA 400 PROFESSIONAL

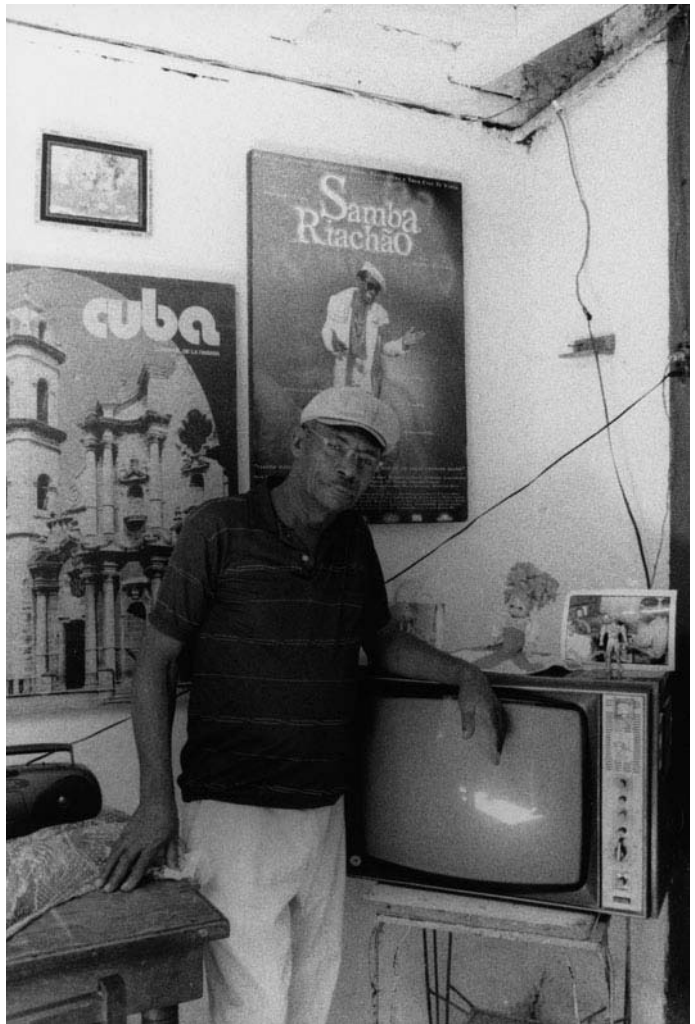
4 0 2 7

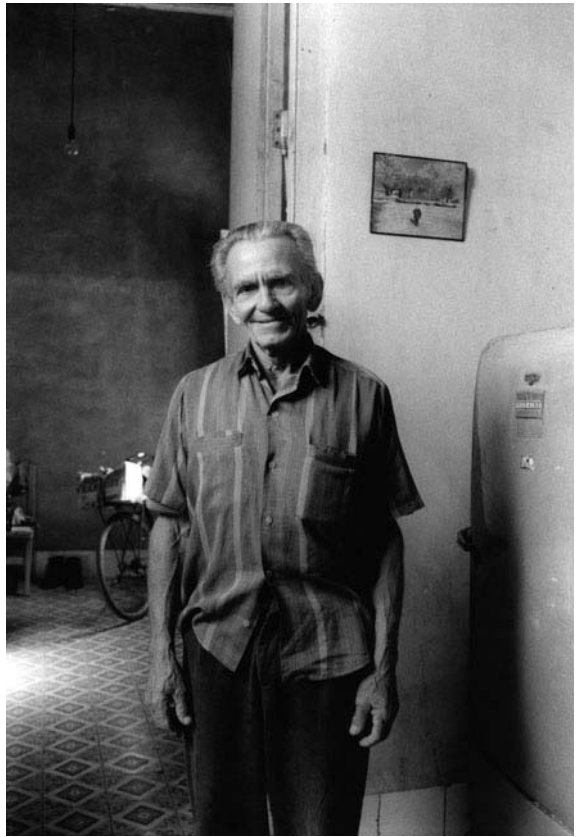
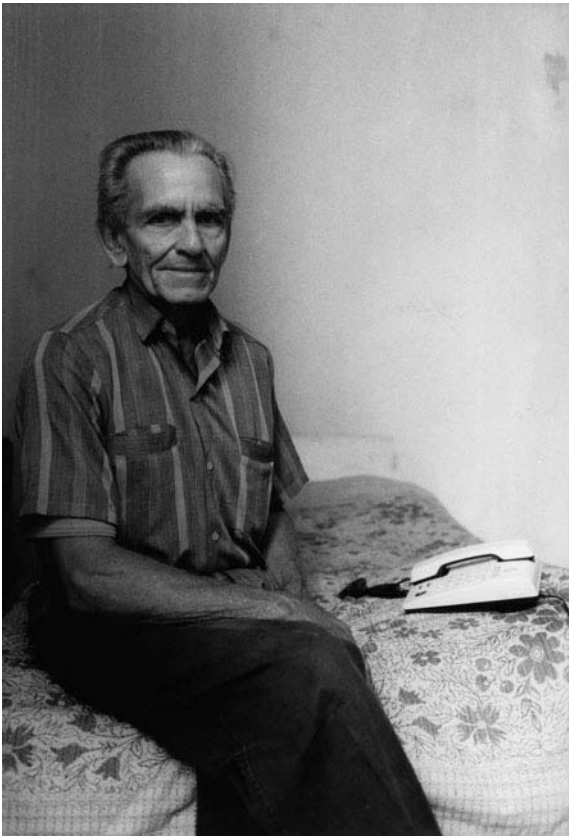
ILFORD

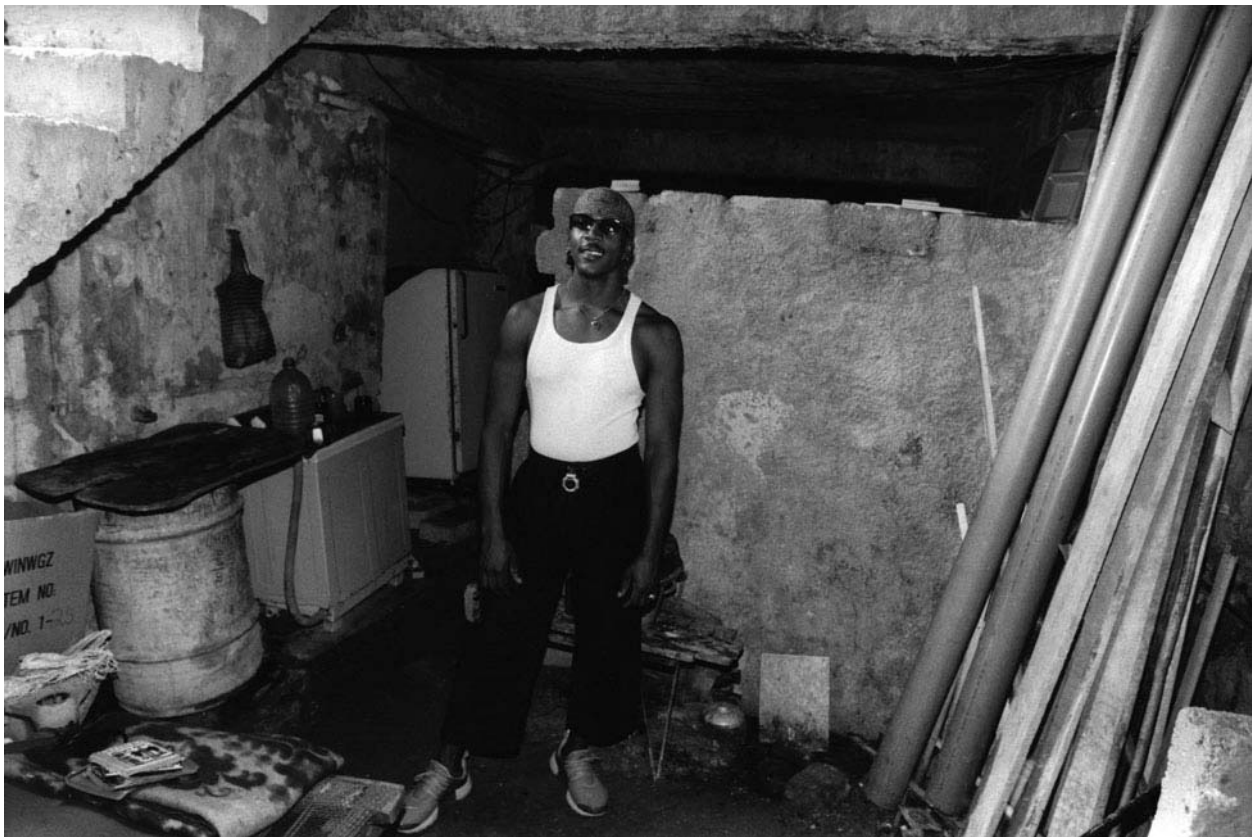
1 2 3 4 5 6 7 8 9 10 11 12 13 14 15 16 17 18 19 20 21 22 23 24 25 26 27 28 29 30











## **Erklärung**

Ich erkläre hiermit, dass ich die vorliegende Arbeit ohne unzulässige Hilfe Dritter und ohne Benutzung anderer als der angegebenen Hilfsmittel angefertigt habe. Die aus anderen Quellen direkt oder indirekt übernommenen Daten und Konzepte sind unter Angabe der Quelle gekennzeichnet. Weitere Personen, insbesondere Promotionsberater, waren an der inhaltlich materiellen Erstellung dieser Arbeit nicht beteiligt. Die Arbeit wurde bisher weder im In- noch im Ausland in gleicher oder ähnlicher Form einer anderen Prüfungsbehörde vorgelegt.